

LEGEND:

● PROPOSED LOCATION



DELTA PETROLEUM CORP.

PAD #5C

**SECTION 25, T9S, R93W, 6th P.M.
1531' FSL 1951' FWL**



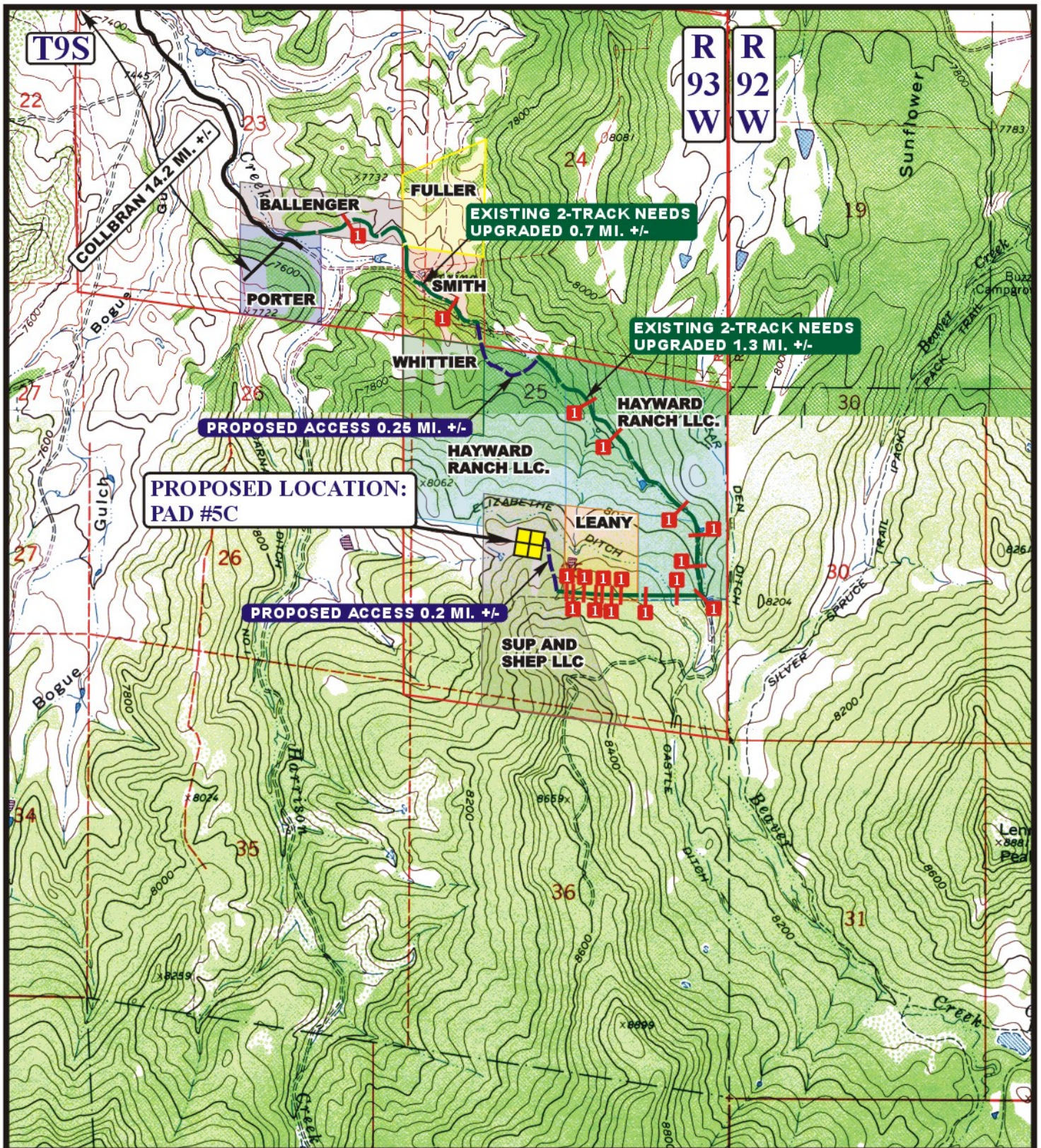
Uintah Engineering & Land Surveying
85 South 200 East Vernal, Utah 84078
(435) 789-1017 * FAX (435) 789-1813

**ACCESS ROAD
MAP**

08 17 07
MONTH DAY YEAR

SCALE: 1:100,000 DRAWN BY: C.P. REV: 03-25-10 Z.L.





LEGEND:

- EXISTING ROAD
- PROPOSED ACCESS ROAD
- EXISTING 2-TRACK NEEDS UPGRADED 18" CMP REQUIRED



Utah Engineering & Land Surveying
 85 South 200 East Vernal, Utah 84078
 (435) 789-1017 * FAX (435) 789-1813



DELTA PETROLEUM CORP.

PAD #5C
SECTION 25, T9S, R93W, 6th P.M.
NE 1/4 SW 1/4

ACCESS ROAD
MAP

08 17 07
 MONTH DAY YEAR

SCALE: 1" = 2000' DRAWN BY: C.P. REV: 03-25-10 Z.L.

B
TOPO