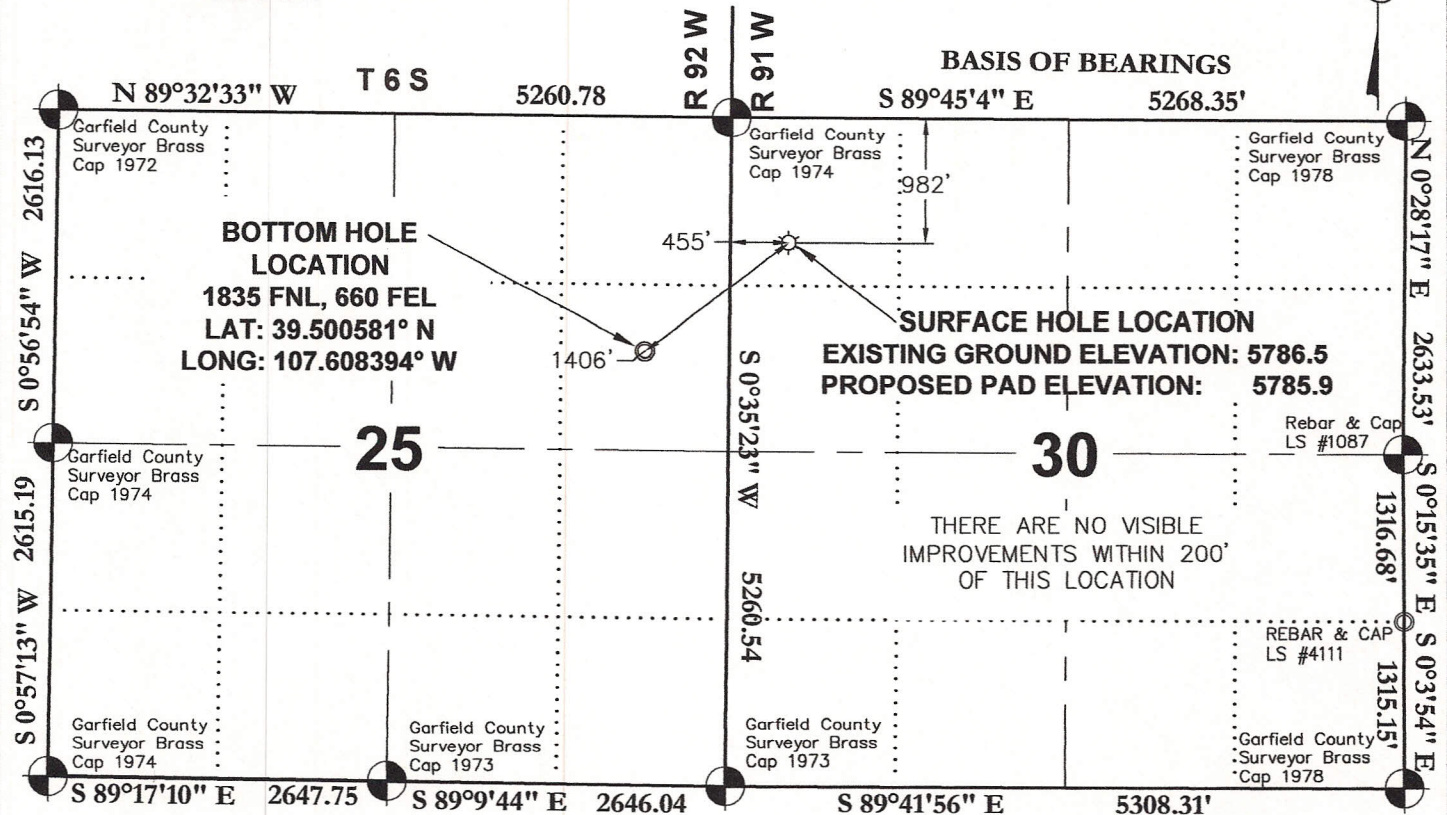
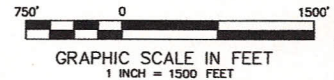


**KAUFMAN**  
**42C-25-692**  
**SURFACE LOCATION**  
**982 FNL**  
**455 FWL**

**LATITUDE**  
**39.502973° N**  
**LONGITUDE**  
**107.604482° W**

**NORTHING**  
**1614964.5**  
**EASTING**  
**2406226.1**



**SURVEYORS STATEMENT:**

I, JAMES A. KALMON, A REGISTERED LAND SURVEYOR IN THE STATE OF COLORADO DO HEREBY CERTIFY THAT THE SURVEY SHOWN HEREON WAS PREPARED UNDER MY DIRECT SUPERVISION AND CHECKING THAT THIS MAP IS A TRUE REPRESENTATION THEREOF.

*James A. Kalmon*

COLORADO LICENSED  
JAMES A. KALMON  
38050  
1-7-10  
PROFESSIONAL LAND SURVEYOR

JAMES A. KALMON, COLORADO REGISTRATION NO. 38050  
FOR AND ON BEHALF OF ECLIPSE SURVEYING, INC.

**LEGEND:**

FIELD LOCATED SECTION MONUMENTS AS DESCRIBED

SURFACE HOLE LOCATION

BOTTOM HOLE LOCATION

CALCULATED SECTION CORNER LOCATION

**NOTES:**

- 1) ELEVATIONS BASED ON N.A.V.D. 1988
- 2) LATITUDES AND LONGITUDES ARE BASE ON NAD 83, COLORADO CENTRAL ZONE.
- 3) WELL MEASURED 90° FROM SECTION LINES.
- 4) THE BASIS OF BEARING IS FROM GPS OBSERVATION RESULTING IN THE BEARING BETWEEN THE FOUND MONUMENTS AS SHOWN.
- 5) ELEVATION MASK SET TO 15°
- 6) PDOP SET TO 6



**ECLIPSE**  
**surveying**

111 E. THIRD ST., SUITE 208, RIFLE, CO 81650  
(970) 625-3048

SURVEY DATE: 12/21/09  
RELEASE DATE: 01/06/10  
SCALE: 1" = 1000'  
SHEET: 1 of 7  
PROJECT #: 08001



**Bill Barrett Corporation**

NW<sup>1</sup>/<sub>4</sub>NW<sup>1</sup>/<sub>4</sub>, SECTION 30  
T. 6 S., R. 91 W. of the 6th. P.M.  
GARFIELD COUNTY, COLORADO