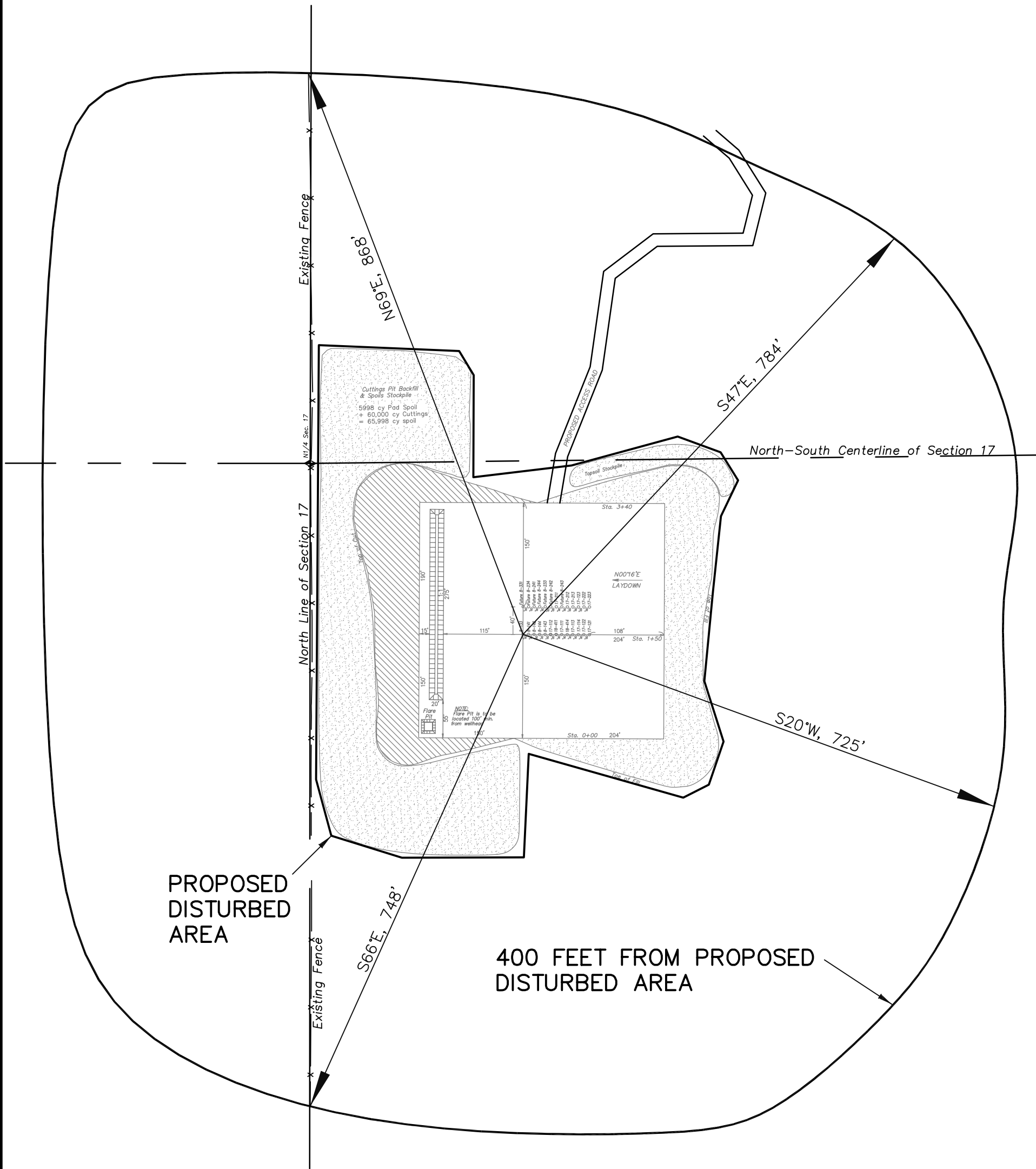
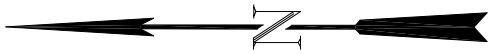
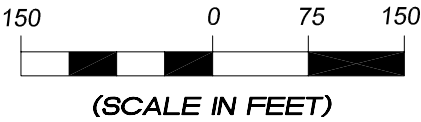


Delta Petroleum Corporation  
ADDENDUM TO LEGAL PLATS FOR  
PAD NBC 17C  
SECTION 17, T9S, R93W, 6th P.M.



Surface use of pad is grazing.  
Vegetation consists mainly of  
sage brush, oak brush and native  
grasses.



906 Main Street  
Evanston, Wyoming 82930  
Phone No. (307) 789-4545

Survey Addendum		Scale: 1" = 150'	SHEET <b>1</b>
Project No.	08-07-11	Date Surveyed: 8/21/08	
Date Drawn:	9/10/08	Latest Revision Date: 2/10/10	