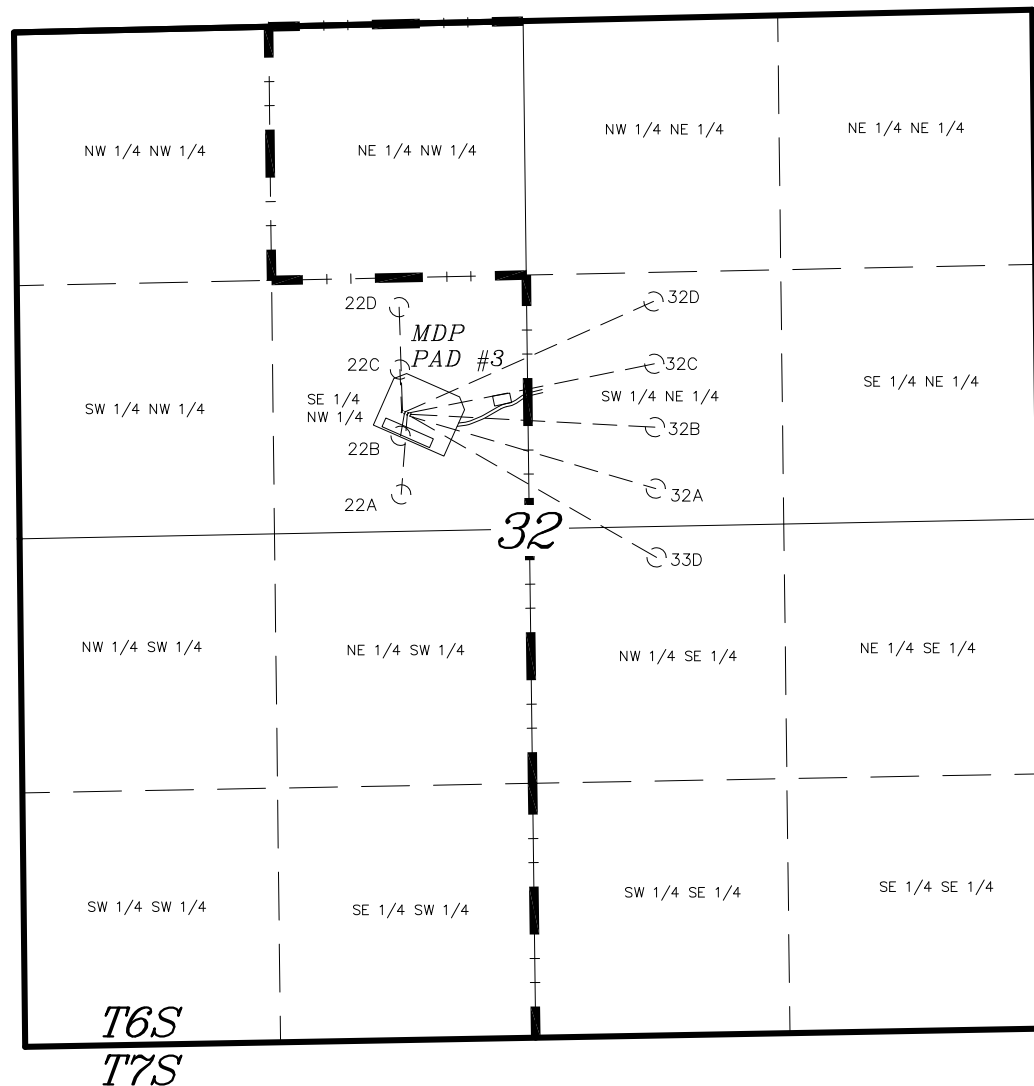


T6S, R91W, 6th P.M.

BILL BARRETT CORP.

**GENERAL MUTLI WELL PLAN
SECTION DRILLING MAP
WELL PAD (MDP PAD #3)**



LATITUDE & LONGITUDE Surface position of Wells (NAD 83)			LATITUDE & LONGITUDE Bottom hole position of Wells (NAD 83)		
WELL	LATITUDE	LONGITUDE	WELL	LATITUDE	LONGITUDE
32A-32	39° 29' 09.42"	107° 34' 47.11"	32A-32	39° 29' 05.72"	107° 34' 30.99"
33D-32	39° 29' 09.48"	107° 34' 47.30"	33D-32	39° 29' 02.18"	107° 34' 30.95"
22A-32	39° 29' 09.55"	107° 34' 47.48"	22A-32	39° 29' 05.46"	107° 34' 47.89"
22B-32	39° 29' 09.61"	107° 34' 47.67"	22B-32	39° 29' 08.47"	107° 34' 47.93"
22C-32	39° 29' 09.68"	107° 34' 47.86"	22C-32	39° 29' 11.88"	107° 34' 47.97"
32B-32	39° 29' 09.57"	107° 34' 47.24"	32B-32	39° 29' 08.88"	107° 34' 31.03"
32C-32	39° 29' 09.64"	107° 34' 47.43"	32C-32	39° 29' 12.14"	107° 34' 31.07"
32D-32	39° 29' 09.70"	107° 34' 47.62"	32D-32	39° 29' 15.35"	107° 34' 31.11"
22D-32	39° 29' 09.77"	107° 34' 47.80"	22D-32	39° 29' 15.09"	107° 34' 48.00"

TRI STATE LAND SURVEYING & CONSULTING

180 NORTH VERNAL AVE. — VERNAL, UTAH 84078
(435) 781-2501

DATE SURVEYED: 12-21-09	SURVEYED BY: C.D.S.	SHEET 1 OF 12
DATE DRAWN: 12-17-09	DRAWN BY: F.T.M.	
REVISED:	SCALE: 1" = 1000'	