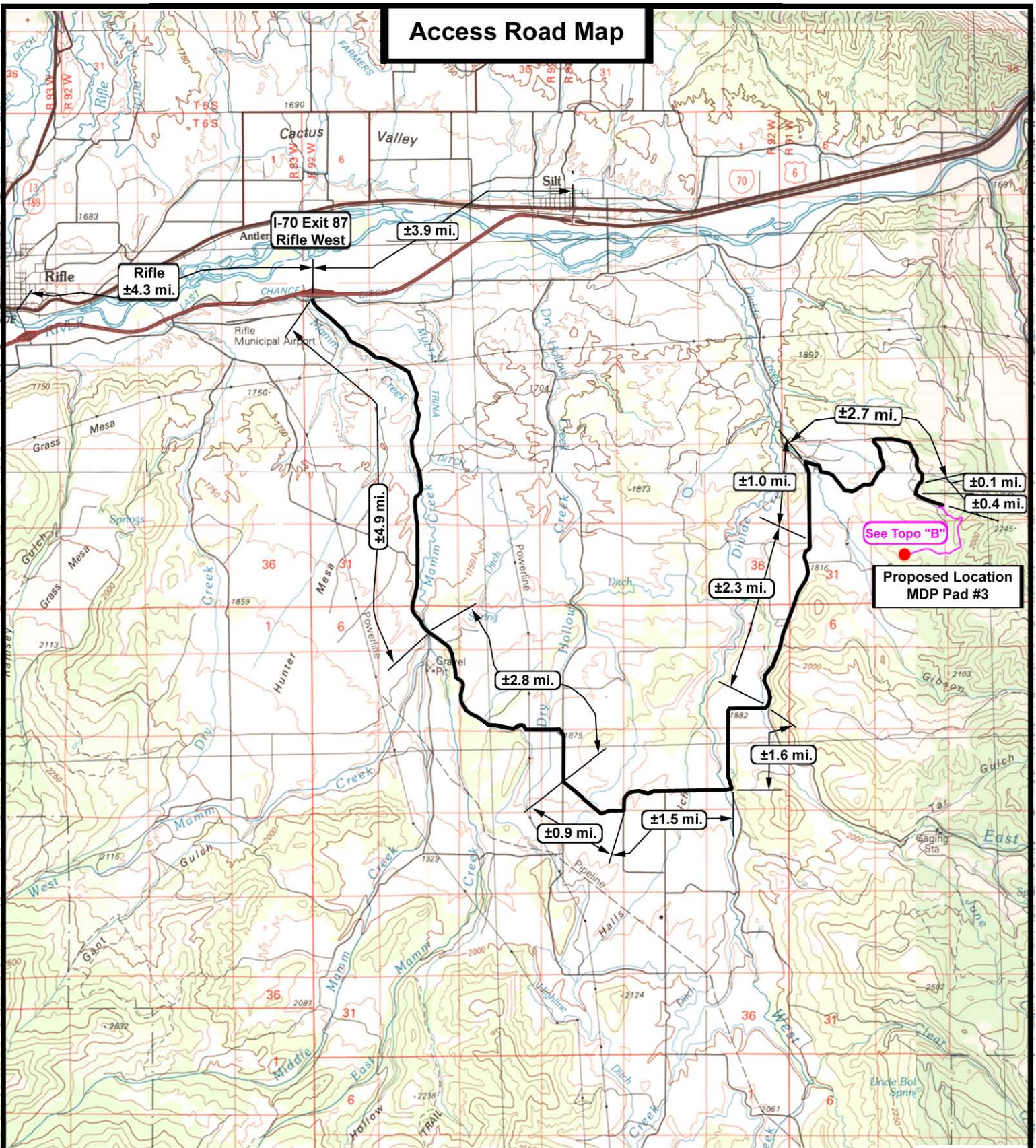


Access Road Map



BILL BARRETT
B CORP.

MDP Pad #3
SEC. 33, T6S, R91W, 6th P.M.



Tri-State
Land Surveying Inc.
(435) 781-2501
180 North Vernal Ave. Vernal, Utah 84078

SCALE: 1 = 100,000
DRAWN BY: JAS
DATE: 12-21-2009

Legend

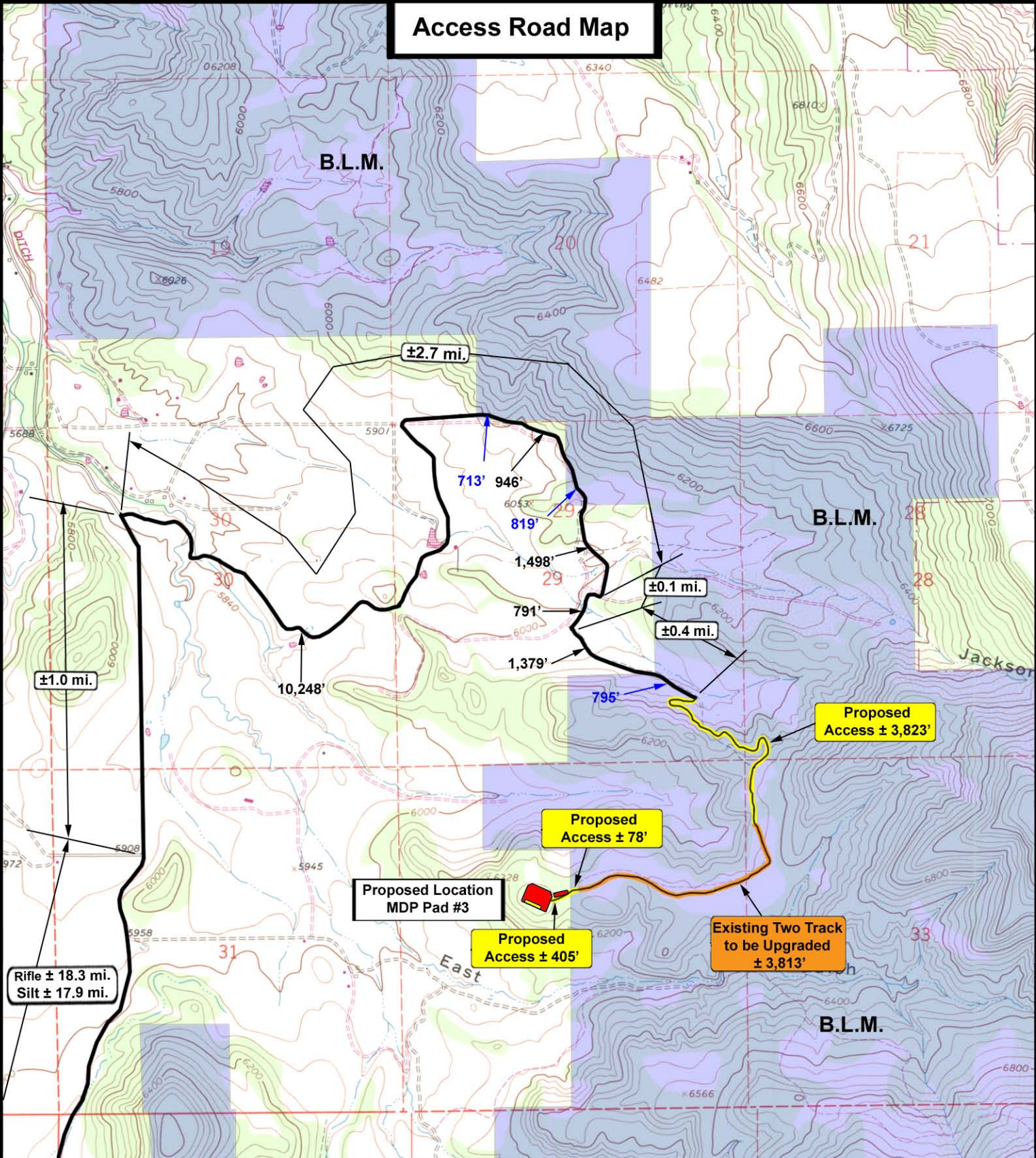
Existing Road
Proposed Access

TOPOGRAPHIC MAP

"A"

SHEET
9
OF 12

Access Road Map



MDP Pad #3
SEC. 32, T6S, R91W, 6th P.M.



 **Tri-State**
Land Surveying Inc.
(435) 781-2501
180 North Vernal Ave. Vernal, Utah 84078

SCALE: 1" = 2,000'

DRAWN BY: JAS

DATE: 12-22-2009

Legend

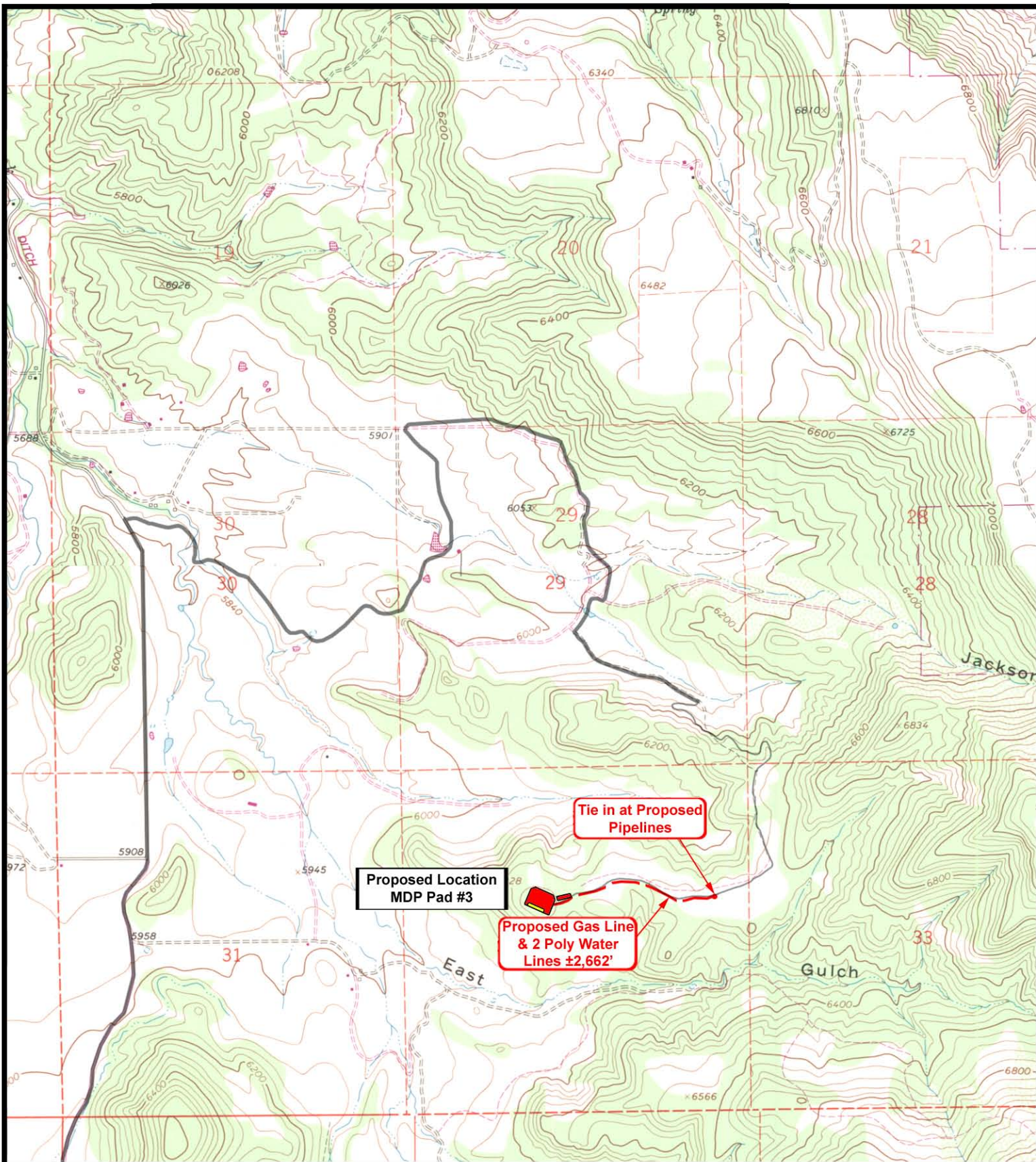
-  Existing Road
 Proposed Access
 Existing Two-Track

TOPOGRAPHIC MAP

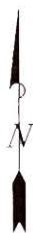
"B"

SHEET

10
OF 12



MDP Pad #3
SEC. 32, T6S, R91W, 6th P.M.



Tri-State
Land Surveying Inc.
 (435) 781-2501
 180 North Vernal Ave. Vernal, Utah 84078

SCALE: 1" = 2,000'
DRAWN BY: JAS
DATE: 12-22-2009

Legend

— Roads
 --- Proposed Pipelines

TOPOGRAPHIC MAP

"D"

SHEET
11
OF 12