

1978 Garfield Co. 3"
Brass Cap, 0.8' High

1978 Garfield Co. 3"
Brass Cap, Pile of
Stones 0.5' High,
Set Marked Stone

BILL BARRETT CORP.
LOCATION DRAWING ADDENDUM TO LEGAL PLATS

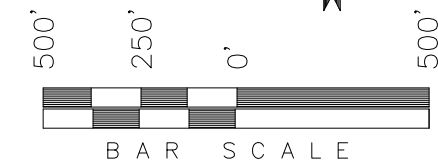
WELL PAD: (MDP PAD #3)
Section 32, T6S, R91W, 6th P.M.

PLANT COMMUNITY (non-crop land)

<input type="checkbox"/> DISTURBED	<input type="checkbox"/> EVERGREEN FORREST LAND
<input type="checkbox"/> GRASSLAND	<input type="checkbox"/> RANGELAND
<input checked="" type="checkbox"/> SHRUB & BRUSH LAND	<input type="checkbox"/> TIMBER
<input type="checkbox"/> PLAINS DECIDUOUS RIPARIAN	<input type="checkbox"/> RECREATIONAL
<input type="checkbox"/> MOUNTAIN CONIFER RIPARIAN	<input type="checkbox"/> OTHER: (Describe)

SURFACE USE OF THE PROPOSED WELL SITE

<input type="checkbox"/> CROP LAND	<input checked="" type="checkbox"/> NON-CROP LAND	<input type="checkbox"/> SUBDIVIDED
<input type="checkbox"/> IRRIGATED	<input checked="" type="checkbox"/> RANGELAND	<input type="checkbox"/> INDUSTRIAL
<input type="checkbox"/> DRY LAND	<input type="checkbox"/> TIMBER	<input type="checkbox"/> COMMERCIAL
<input type="checkbox"/> IMPROVED PASTURE	<input type="checkbox"/> RECREATIONAL	<input type="checkbox"/> RESIDENTIAL
<input type="checkbox"/> HAY MEADOW	<input type="checkbox"/> OTHER: (Describe)	
<input type="checkbox"/> CRP		



GGU MILLER
11C-32-691

1/16 Section Line
-NW 1/4
Property Line (Typ.)

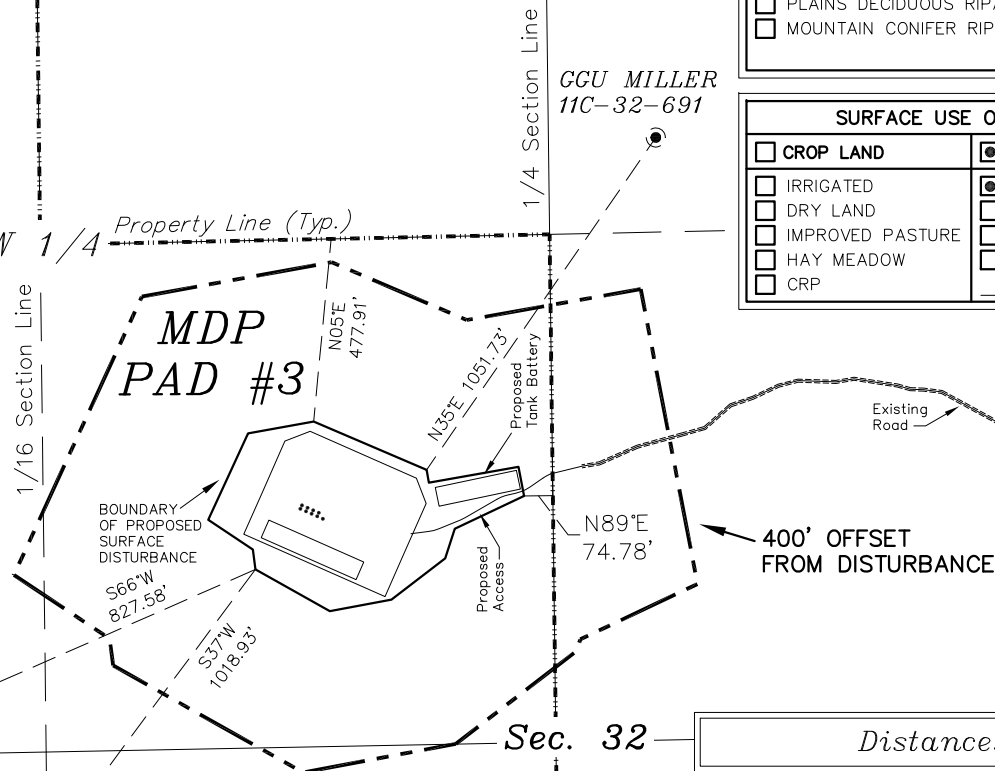
Section Line

1/4 Section Line

2003 Alum. Cap

GGU BARGE
12B-32-691

GGU MILLER
13B-32-691



Distances from Well Heads

WELL	BUILDING	ABOVE GROUND UTILITY	PUBLIC ROAD	RAILROAD	PROPERTY LINE
32A-32	S66°W 3,057'	S66°W 3,057'	S05°W 6344'	N16°W 5 Miles	N89°E 599.68'
33D-32	S66°W 3,057'	S66°W 3,057'	S05°W 6344'	N16°W 5 Miles	N90°E 614.27'
22A-32	S66°W 3,057'	S66°W 3,057'	S05°W 6344'	N16°W 5 Miles	S90°E 628.93'
22B-32	S66°W 3,057'	S66°W 3,057'	S05°W 6344'	N16°W 5 Miles	S89°E 643.66'
22C-32	S66°W 3,057'	S66°W 3,057'	S05°W 6344'	N16°W 5 Miles	S88°E 658.44'
32B-32	S66°W 3,057'	S66°W 3,057'	S05°W 6344'	N16°W 5 Miles	S89°E 610.29'
32C-32	S66°W 3,057'	S66°W 3,057'	S05°W 6344'	N16°W 5 Miles	S89°E 625.04'
32D-32	S66°W 3,057'	S66°W 3,057'	S05°W 6344'	N16°W 5 Miles	S88°E 639.86'
22D-32	S66°W 3,057'	S66°W 3,057'	S05°W 6344'	N16°W 5 Miles	S88°E 654.73'

SURVEYED BY: C.D.S. SURVEY DATE: 12-21-09
DRAWN BY: F.T.M. DATE DRAWN: 12-17-09
SCALE: 1" = 500' REVISED:

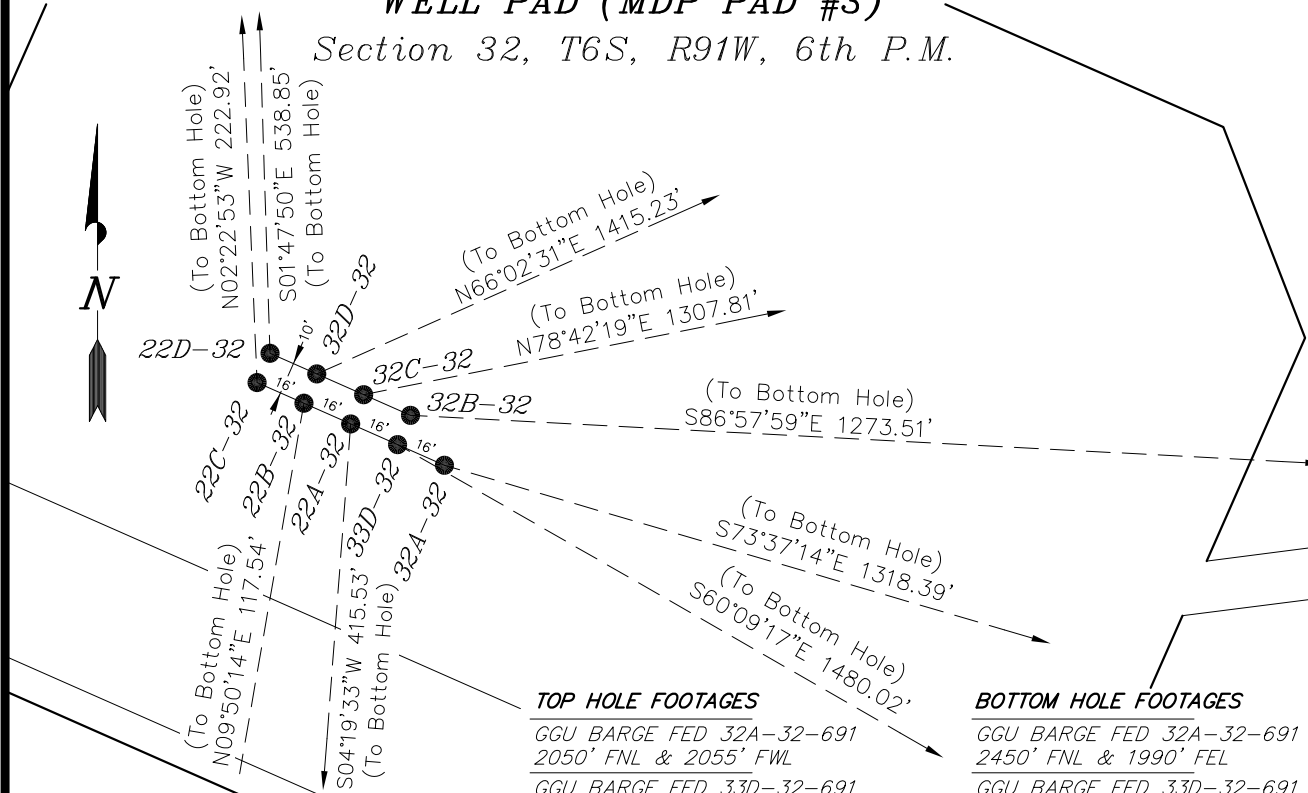
Tri State
Land Surveying, Inc.
180 NORTH VERNAL AVE. VERNAL, UTAH 84078

SHEET
2j
OF 12

BILL BARRETT CORP.

DETAIL MULTI WELL PLAN WELL PAD INTERFERENCE PLAT WELL PAD (MDP PAD #3)

Section 32, T6S, R91W, 6th P.M.



RELATIVE COORDINATES (From top hole to bottom hole)

WELL	NORTH	EAST
32A-32	-372'	1265'
33D-32	-737'	1284'
22A-32	-414'	-31'
22B-32	-116'	-20'
22C-32	223'	-9'
32B-32	-67'	1272'
32C-32	256'	1282'
32D-32	575'	1293'
22D-32	-539'	17'

TOP HOLE FOOTAGES

GGU BARGE FED 32A-32-691
2050' FNL & 2055' FWL
GGU BARGE FED 33D-32-691
2043' FNL & 2040' FWL
GGU BARGE 22A-32-691
2036' FNL & 2026' FWL
GGU BARGE 22B-32-691
2030' FNL & 2011' FWL
GGU BARGE 22C-32-691
2023' FNL & 1997' FWL
GGU BARGE FED 32B-32-691
2034' FNL & 2045' FWL
GGU BARGE FED 32C-32-691
2027' FNL & 2030' FWL
GGU BARGE FED 32D-32-691
2021' FNL & 2016' FWL
GGU BARGE 22D-32-691
2014' FNL & 2001' FWL

BOTTOM HOLE FOOTAGES

GGU BARGE FED 32A-32-691
2450' FNL & 1990' FEL
GGU BARGE FED 33D-32-691
2490' FNL & 1990' FEL
GGU BARGE 22A-32-691
2450' FNL & 1990' FWL
GGU BARGE 22B-32-691
2145' FNL & 1990' FWL
GGU BARGE 22C-32-691
1800' FNL & 1990' FWL
GGU BARGE FED 32B-32-691
2130' FNL & 1990' FEL
GGU BARGE FED 32C-32-691
1800' FNL & 1990' FEL
GGU BARGE FED 32D-32-691
1475' FNL & 1990' FEL
GGU BARGE 22D-32-691
1475' FNL & 1990' FWL

LATITUDE & LONGITUDE Surface position of Wells (NAD 83)

WELL	LATITUDE	LONGITUDE
32A-32	39° 29' 09.42"	107° 34' 47.11"
33D-32	39° 29' 09.48"	107° 34' 47.30"
22A-32	39° 29' 09.55"	107° 34' 47.48"
22B-32	39° 29' 09.61"	107° 34' 47.67"
22C-32	39° 29' 09.68"	107° 34' 47.86"
32B-32	39° 29' 09.57"	107° 34' 47.24"
32C-32	39° 29' 09.64"	107° 34' 47.43"
32D-32	39° 29' 09.70"	107° 34' 47.62"
22D-32	39° 29' 09.77"	107° 34' 47.80"

LATITUDE & LONGITUDE Bottom hole position of Wells (NAD 83)

WELL	LATITUDE	LONGITUDE
32A-32	39° 29' 05.72"	107° 34' 30.99"
33D-32	39° 29' 02.18"	107° 34' 30.95"
22A-32	39° 29' 05.46"	107° 34' 47.89"
22B-32	39° 29' 08.47"	107° 34' 47.93"
22C-32	39° 29' 11.88"	107° 34' 47.97"
32B-32	39° 29' 08.88"	107° 34' 31.03"
32C-32	39° 29' 12.14"	107° 34' 31.07"
32D-32	39° 29' 15.35"	107° 34' 31.11"
22D-32	39° 29' 15.09"	107° 34' 48.00"

SURVEYED BY: C.D.S. DATE SURVEYED: 12-21-09
DRAWN BY: F.T.M. DATE DRAWN: 12-17-09
SCALE: 1" = 60' REVISED:

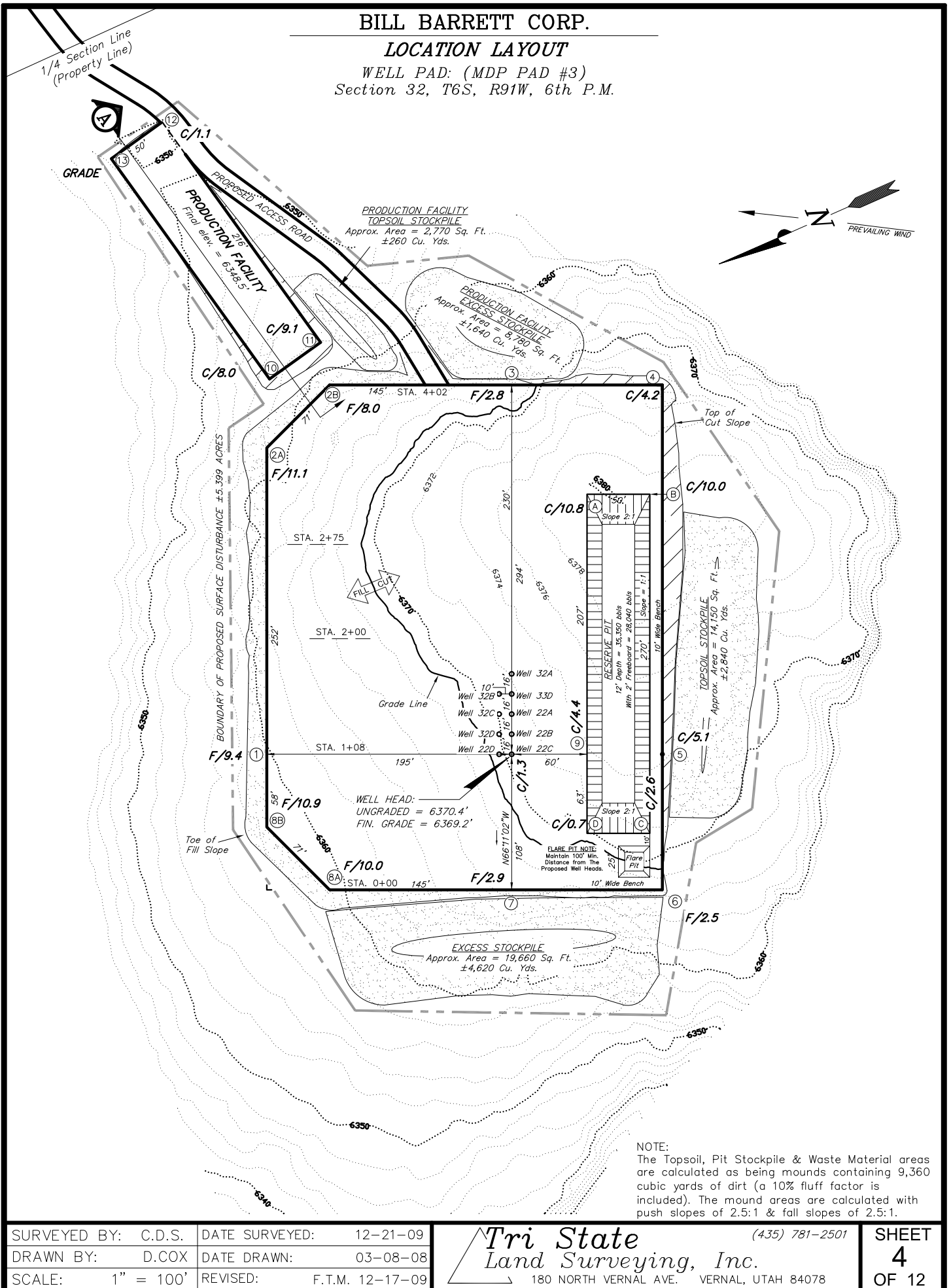
Tri State
Land Surveying, Inc.
180 NORTH VERNAL AVE. VERNAL, UTAH 84078
(435) 781-2501

SHEET
3
OF 12

BILL BARRETT CORP.

LOCATION LAYOUT

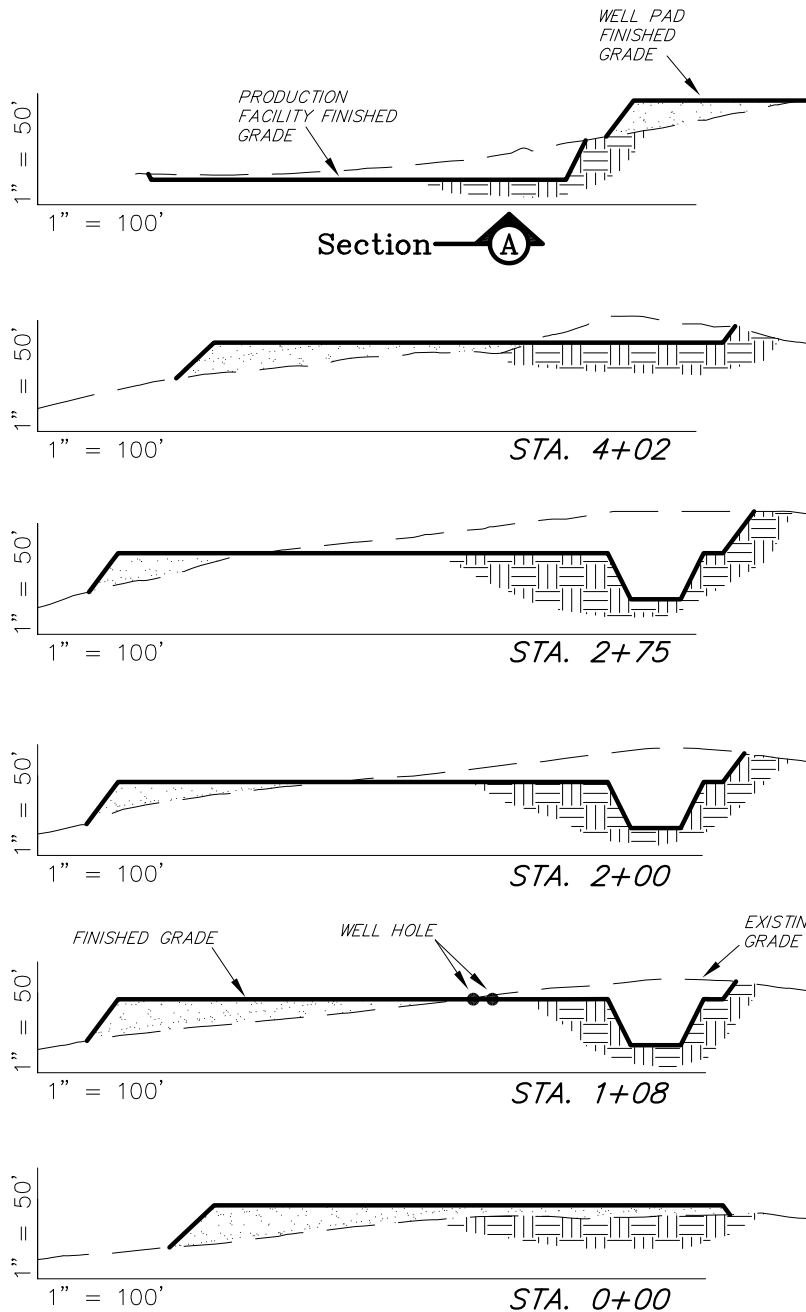
WELL PAD: (MDP PAD #3)
Section 32, T6S, R91W, 6th P.M.



BILL BARRETT CORP.

CROSS SECTIONS

WELL PAD: (MDP PAD #3)
Section 32, T6S, R91W, 6th P.M.



NOTE:
UNLESS OTHERWISE NOTED CUT SLOPES ARE AT 1:1 FILL SLOPES ARE AT 1.5:1

SURFACE DISTURBANCE AREAS	BARGE PROP. SEC. 32	BLM PROP. SEC. 32
WELL SITE	±5.399 ACRES	NA
TOTAL DISTURBANCE	±5.399 ACRES	NA
PROPOSED ACCESS ROAD DISTANCES	BARGE PROP. SEC. 32	BLM PROP. SEC. 32
PROPOSED ACCESS ROAD	406'	4,920'
PROD. PAD ACCESS ROAD	NA	NA
TOTAL DISTANCE	406'	4,920'

ESTIMATED EARTHWORK QUANTITIES (No Shrink or swell adjustments have been used) (Expressed in Cubic Yards)				
ITEM	CUT	FILL	6" TOPSOIL	EXCESS
RES. PITS	4,200	0	Topsoil is not included in Pad Cut	4,200
PAD	11,950	11,950	2,580	0
PROD.	1,490	0	240	1,490
TOTALS	17,640	11,950	2,820	5,690

SURVEYED BY: C.D.S. DATE SURVEYED: 12-21-09
DRAWN BY: D.COX DATE DRAWN: 03-08-08
SCALE: 1" = 100' REVISED: F.T.M. 12-17-09

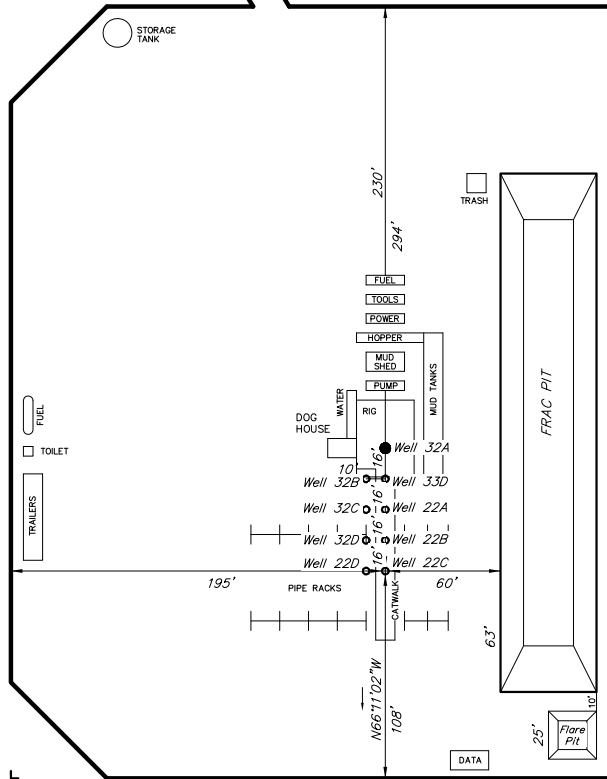
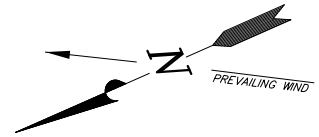
Tri State
Land Surveying, Inc.
180 NORTH VERNAL AVE. VERNAL, UTAH 84078
(435) 781-2501

SHEET
5
OF 12

BILL BARRETT CORP.

TYPICAL RIG LAYOUT

WELL PAD: (MDP PAD #3)
Section 32, T6S, R91W, 6th P.M.



FLARE PIT NOTE:
Maintain 100' Min.
Distance from The
Proposed Well Heads.

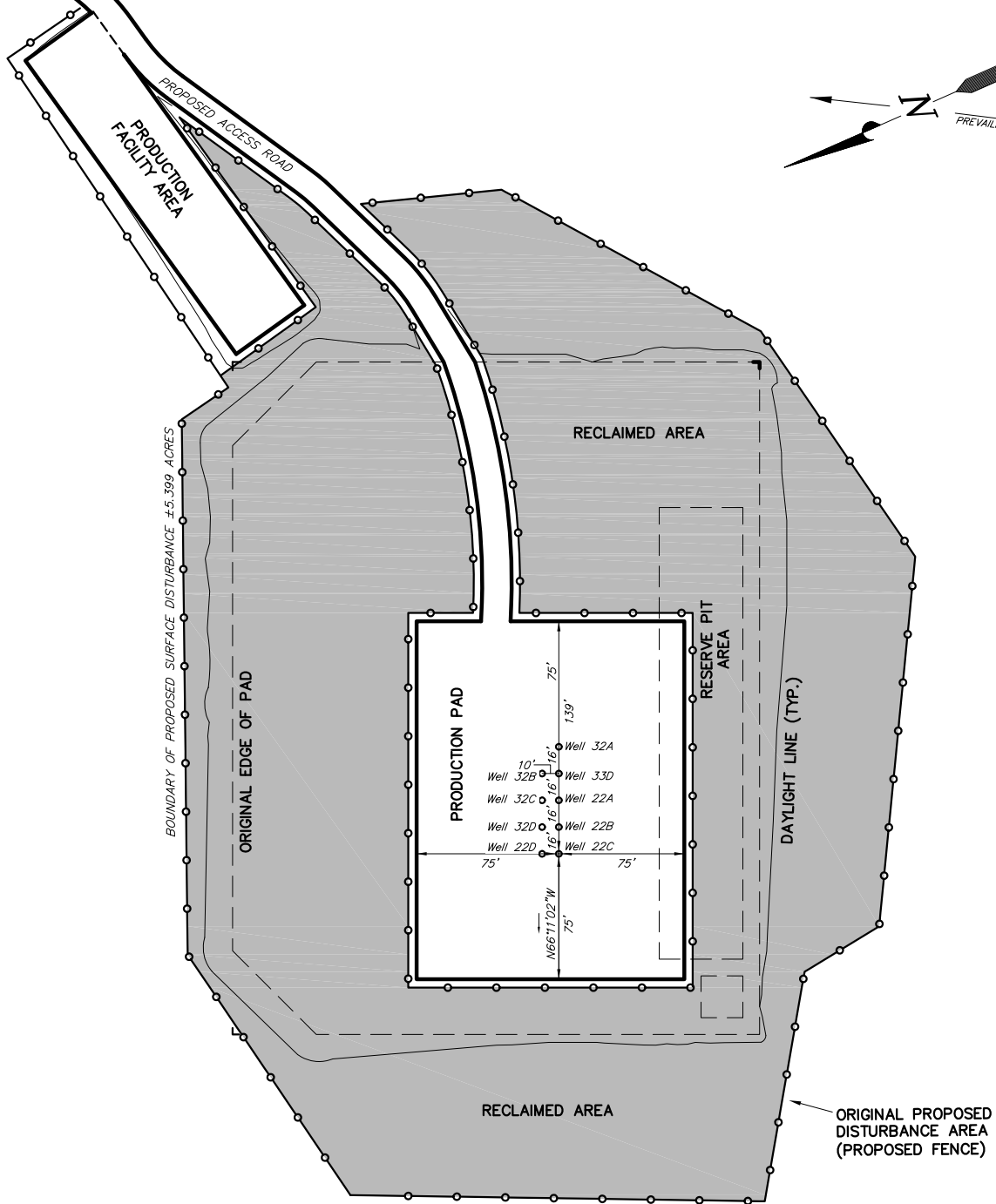
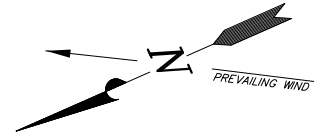
SURVEYED BY: C.D.S.	DATE SURVEYED: 08-31-09
DRAWN BY: F.T.M.	DATE DRAWN: 09-23-08
SCALE: 1" = 100'	REVISED: F.T.M. 09-29-09

Tri State
Land Surveying, Inc.
180 NORTH VERNAL AVE. VERNAL, UTAH 84078
(435) 781-2501

SHEET
6
OF 12

BILL BARRETT CORP.
TYPICAL PLAN OF RECLAMATION

WELL PAD: (MDP PAD #3)
Section 32, T6S, R91W, 6th P.M.



DISTURBED AREA:

TOTAL DISTURBED AREA = 5.399 ACRES
TOTAL RECLAIMED AREA = 3.888 ACRES
UNRECLAIMED AREA = 1.511 ACRES

NOTE: RECLAIMED AREA TO
INCLUDE SEEDING OF APPROVED
VEGETATION AND SUFFICIENT STORM
WATER MANAGEMENT SYSTEM.

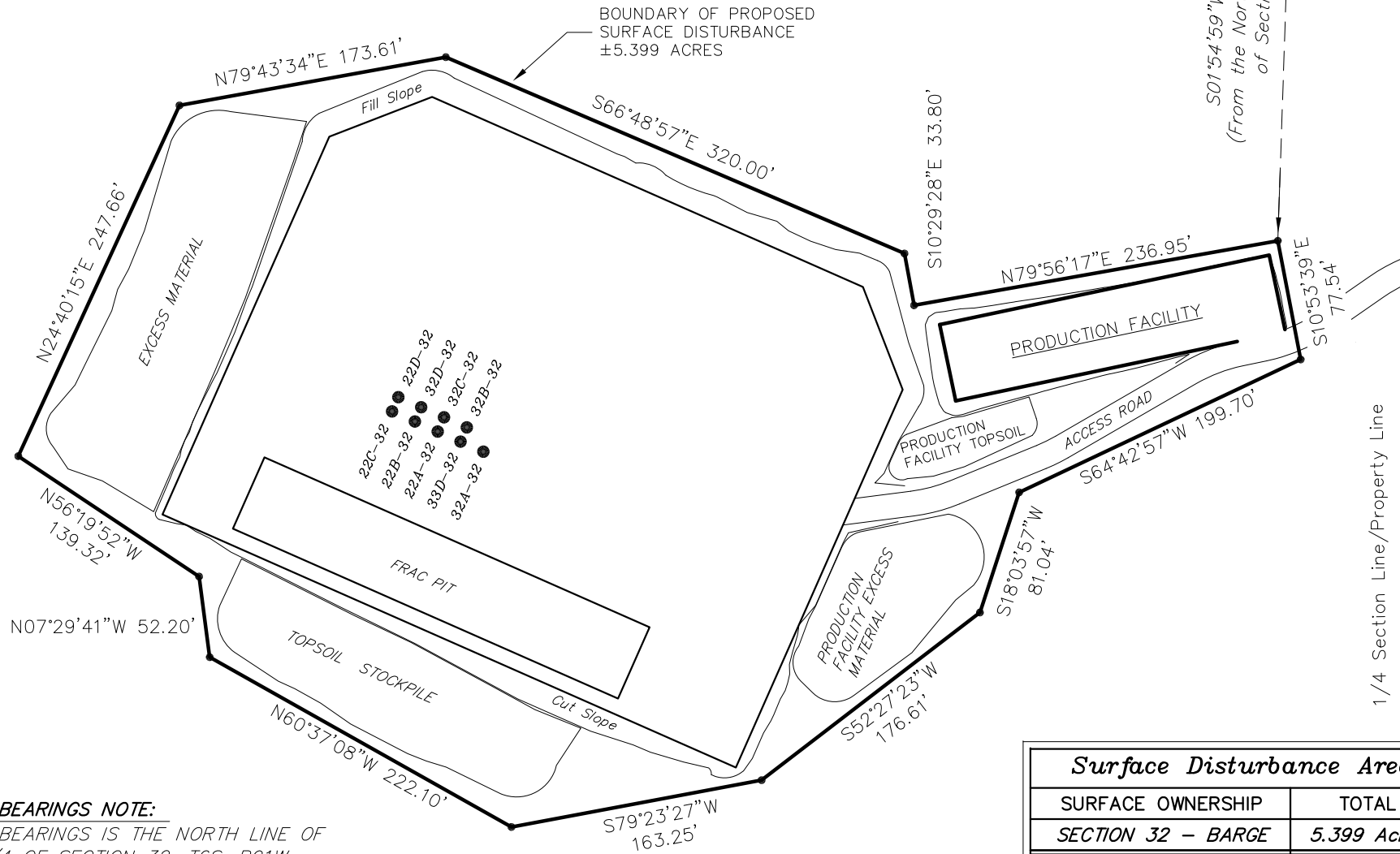
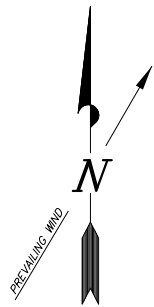
SURVEYED BY: C.D.S.	DATE SURVEYED: 12-21-09
DRAWN BY: D.COX	DATE DRAWN: 03-08-08
SCALE: 1" = 100'	REVISED: F.T.M. 12-17-09

Tri State
Land Surveying, Inc.
180 NORTH VERNAL AVE. VERNAL, UTAH 84078
(435) 781-2501

SHEET
7
OF 12

BILL BARRETT CORP. *SURFACE DISTURBANCE AREA*

WELL PAD: (MDP PAD #3)
Section 32, T6S, R91W, 6th P.M.



BASIS OF BEARINGS NOTE:

BASIS OF BEARINGS IS THE NORTH LINE OF THE NE 1/4 OF SECTION 32, T6S, R91W, 6TH P.M. WHICH IS TAKEN FROM G.P.S. OBSERVATIONS TO BEAR S88°42'50"W A MEASURED DISTANCE OF 2652.31'

<i>Surface Disturbance Area</i>	
SURFACE OWNERSHIP	TOTAL
SECTION 32 - BARGE	5.399 Acres
TOTAL PAD DISTURBANCE	5.399 Acres

SURVEYED BY: C.D.S.	DATE SURVEYED: 12-21-09
DRAWN BY: F.T.M.	DATE DRAWN: 12-22-09
SCALE: 1" = 100'	REVISED:

Tri State
Land Surveying, Inc.
180 NORTH VERNAL AVE. VERNAL, UTAH 84078

SHEET
8
OF 12