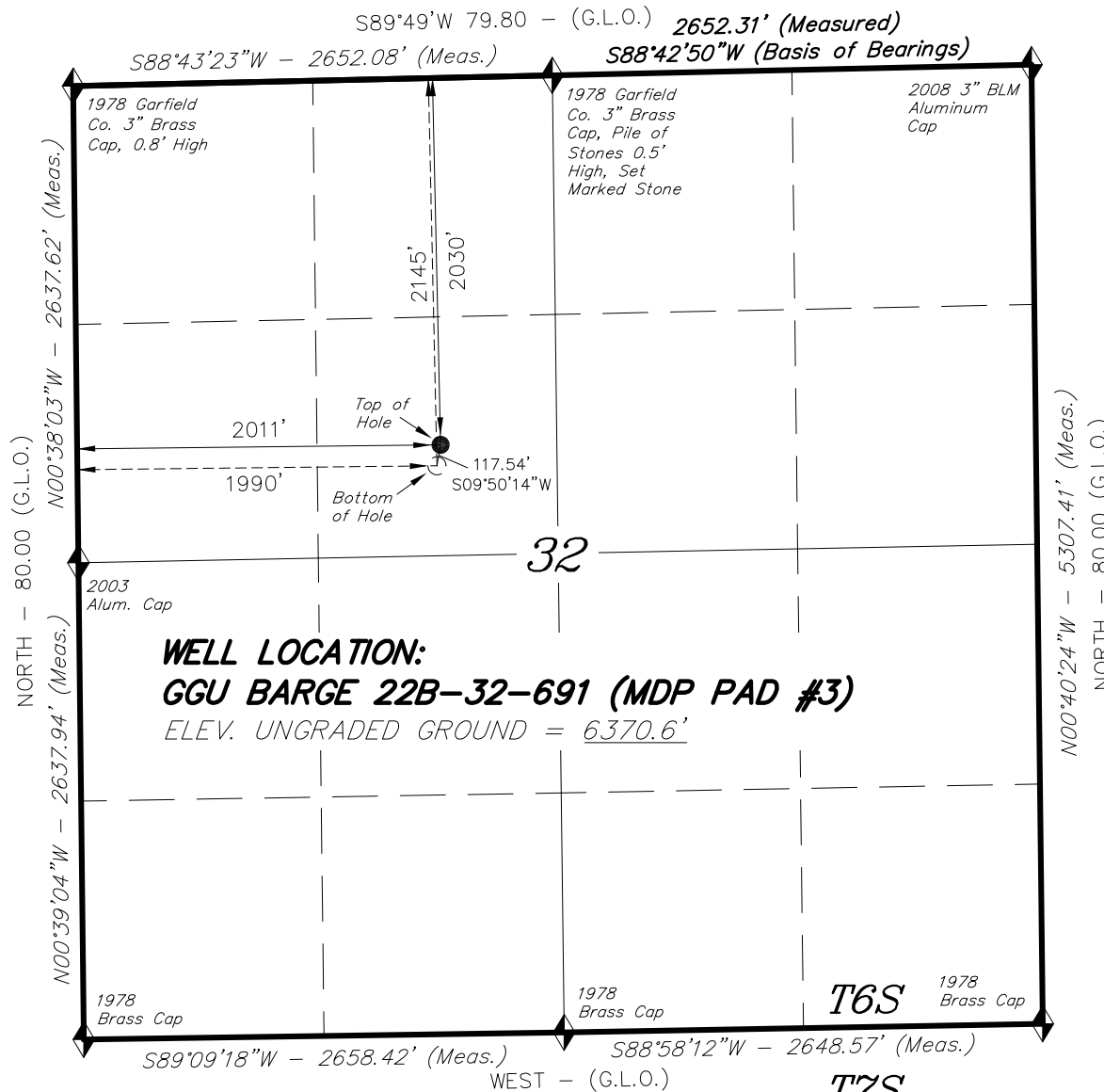


# T6S, R91W, 6th P.M.

BILL BARRETT CORP.



WELL LOCATION, GGU BARGE 22B-32-691 (MDP PAD #3), LOCATED AS SHOWN IN THE SE 1/4 NW 1/4 OF SECTION 32, T6S, R91W, 6th P.M. GARFIELD COUNTY, COLORADO.



## NOTES:

1. Well footages are measured at right angles to the Section Lines.
2. Bearings are based on Global Positioning Satellite observations.
3. G.P.S. Operator: D. Slaugh, (PDOP) = 1.9

## IMPROVEMENT NOTE:

See addendum to legal plat (sheet 2j) for existing improvements within 400' of the proposed well head.

THIS IS TO CERTIFY THAT THE ABOVE PLAT WAS PREPARED FROM FIELD NOTES OF SURVEYS MADE BY ME OR UNDER MY SUPERVISION. THE LOCATION HAS BEEN STAKED ON THE GROUND AS SHOWN ON THE PLAT, AND THAT THE SAME ARE TRUE AND CORRECT TO THE BEST OF MY KNOWLEDGE AND BELIEF.

*[Signature]*  
# 30125  
REGISTERED LAND SURVEYOR  
REGISTRATION No. 30125  
STATE OF COLORADO

◆ = SECTION CORNERS LOCATED

Basis of elevation is the Rifle 2 Triangulation Station. 39°31'53.80" N Lat. & 107°47'07.78" W Long. (NAD 83). Elevation = 5323.1' (NAVD88).

| NAD 83 (SURFACE LOCATION) |                               |
|---------------------------|-------------------------------|
| LATITUDE                  | = 39°29'09.61" (39.486003°)   |
| LONGITUDE                 | = 107°34'47.67" (107.579908°) |

## TRI STATE LAND SURVEYING & CONSULTING

180 NORTH VERNAL AVE. - VERNAL, UTAH 84078  
(435) 781-2501

|                            |                     |                      |
|----------------------------|---------------------|----------------------|
| DATE SURVEYED:<br>12-21-09 | SURVEYED BY: C.D.S. | SHEET<br>2d<br>OF 12 |
| DATE DRAWN:<br>12-16-09    | DRAWN BY: F.T.M.    |                      |
| REVISED:                   | SCALE: 1" = 1000'   |                      |