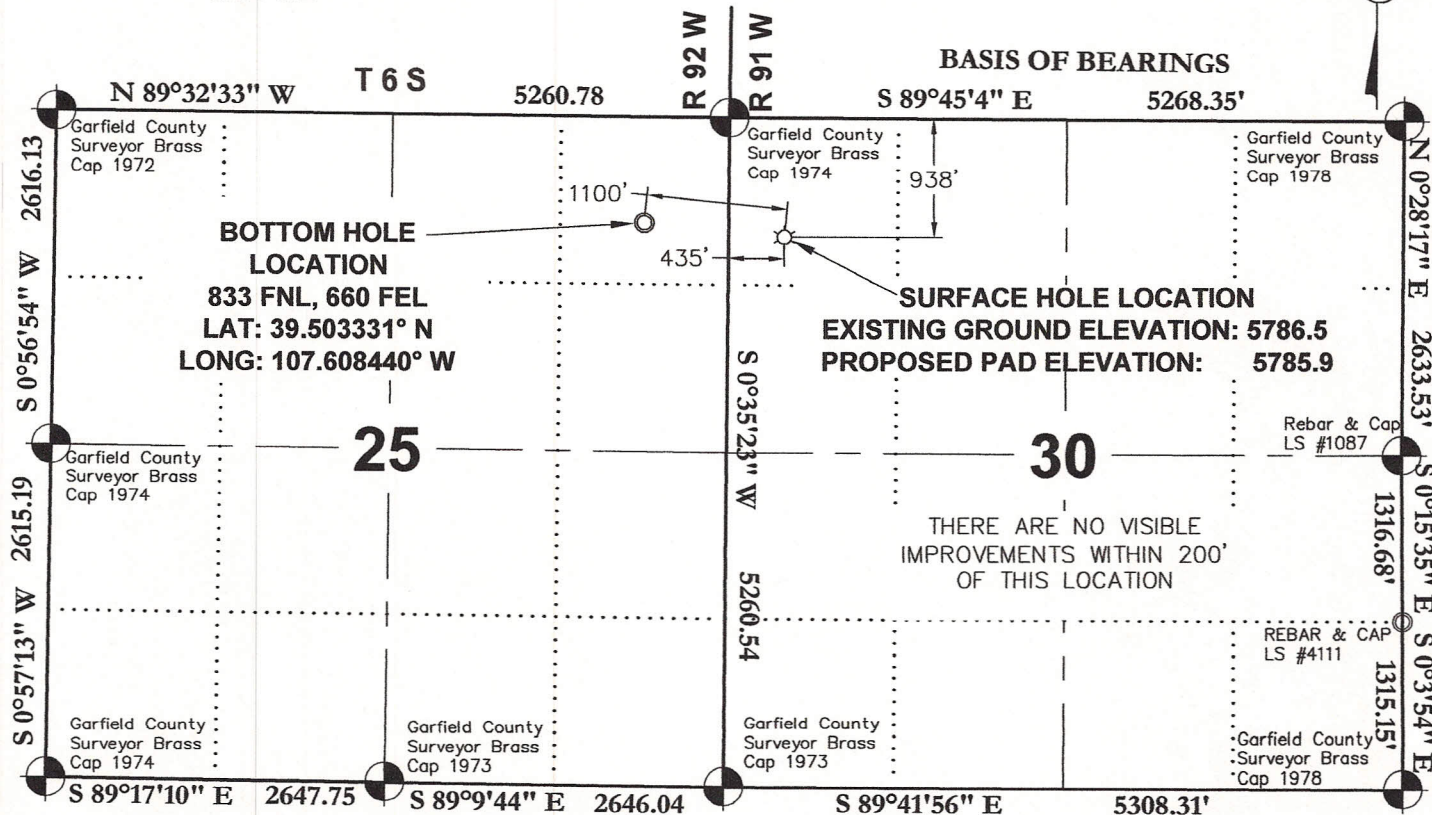
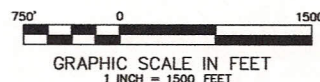


KAUFMAN
41B-25-692
SURFACE LOCATION
938 FNL
435 FWL

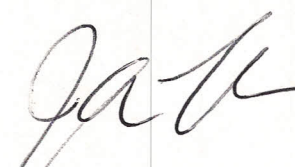
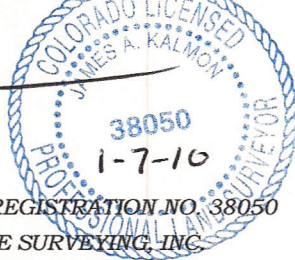
LATITUDE
39.503093° N
LONGITUDE
107.604554° W

NORTHING
1615008.5
EASTING
2406206.9



SURVEYORS STATEMENT:

I, JAMES A. KALMON, A REGISTERED LAND SURVEYOR IN THE STATE OF COLORADO DO HEREBY CERTIFY THAT THE SURVEY SHOWN HEREON WAS PREPARED UNDER MY DIRECT SUPERVISION AND CHECKING THAT THIS MAP IS A TRUE REPRESENTATION THEREOF.

JAMES A. KALMON, COLORADO REGISTRATION NO. 38050
FOR AND ON BEHALF OF ECLIPSE SURVEYING, INC.

LEGEND:

FIELD LOCATED SECTION MONUMENTS AS DESCRIBED
SURFACE HOLE LOCATION
BOTTOM HOLE LOCATION
CALCULATED SECTION CORNER LOCATION



NOTES:

- 1) ELEVATIONS BASED ON N.A.V.D. 1988
- 2) LATITUDES AND LONGITUDES ARE BASE ON NAD 83, COLORADO CENTRAL ZONE.
- 3) WELL MEASURED 90° FROM SECTION LINES.
- 4) THE BASIS OF BEARING IS FROM GPS OBSERVATION RESULTING IN THE BEARING BETWEEN THE FOUND MONUMENTS AS SHOWN.
- 5) ELEVATION MASK SET TO 15°
- 6) PDOP SET TO 6



ECLIPSE
surveying

111 E. THIRD ST., SUITE 208, RIFLE, CO 81650
(970) 625-3048

SURVEY DATE: 12/21/09
RELEASE DATE: 01/06/10
SCALE: 1" = 1000'
SHEET: 1 of 7
PROJECT #: 08001

 **Bill Barrett Corporation**

NW $\frac{1}{4}$ NW $\frac{1}{4}$, SECTION 30
T. 6 S., R. 91 W. of the 6th. P.M.
GARFIELD COUNTY, COLORADO