

Commencing Northbound on Main Street in the Town of Collbran, Colorado. Turn Right on Rodeo Drive which will become 330 Road East. Continue in an Easterly direction on 330 Road East for approximately 14.3 Miles to County Road 71.4 to the East. Turn Right and continue in a Southwesterly direction for approximately 0.1 Miles to an existing road to the West. Turn Left and travel in a Westerly then Northerly direction for 0.5 miles to the Proposed Delta BCU 12B Well Pad.

Total distance from the Town of Collbran to the proposed Delta BC 12D Location is approximately 15.3 Miles.

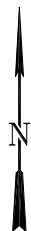
LEGEND

● PROPOSED LOCATION



Wasatch Surveying Associates

906 Main Street Evanston, Wyoming 82930
Phone No. (307) 789-4545 Fax 307-789-5722



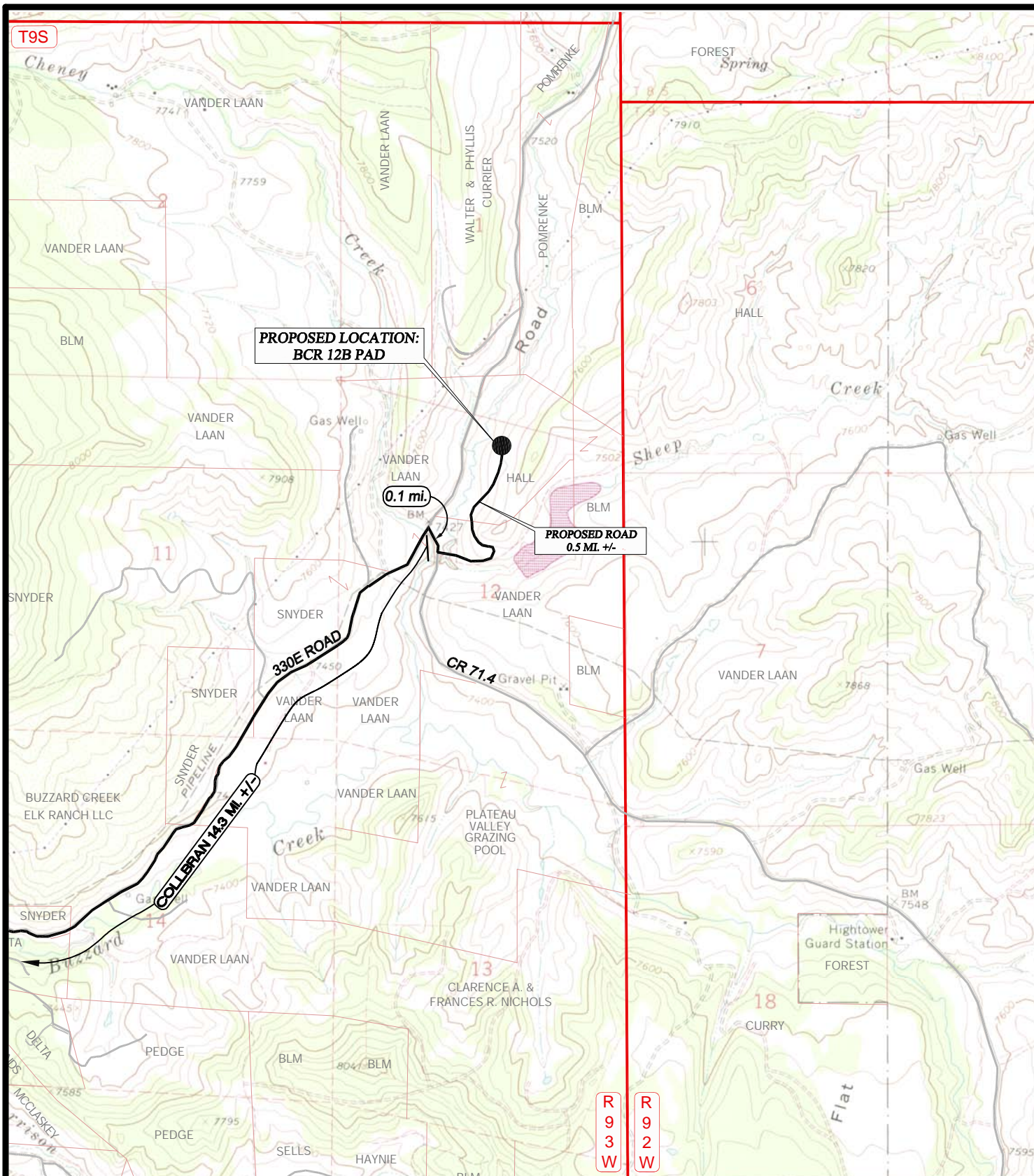
DELTA PETROLEUM CORP.

BCU 12B Pad
SECTION 12, T9S, R93W, 6th, P.M.
NW1/4 NE1/4

TOPOGRAPHIC MAP

PROJECT NUMBER
09-07-01
DATE: 10/5/09
SCALE: 1:100,000

T
O
P
O
A

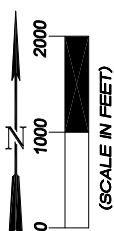


LEGEND

— EXISTING ROAD



Wasatch Surveying Associates
 906 Main Street Evanston, Wyoming 82930
 Phone No. (307) 789-4545 Fax 307-789-5722



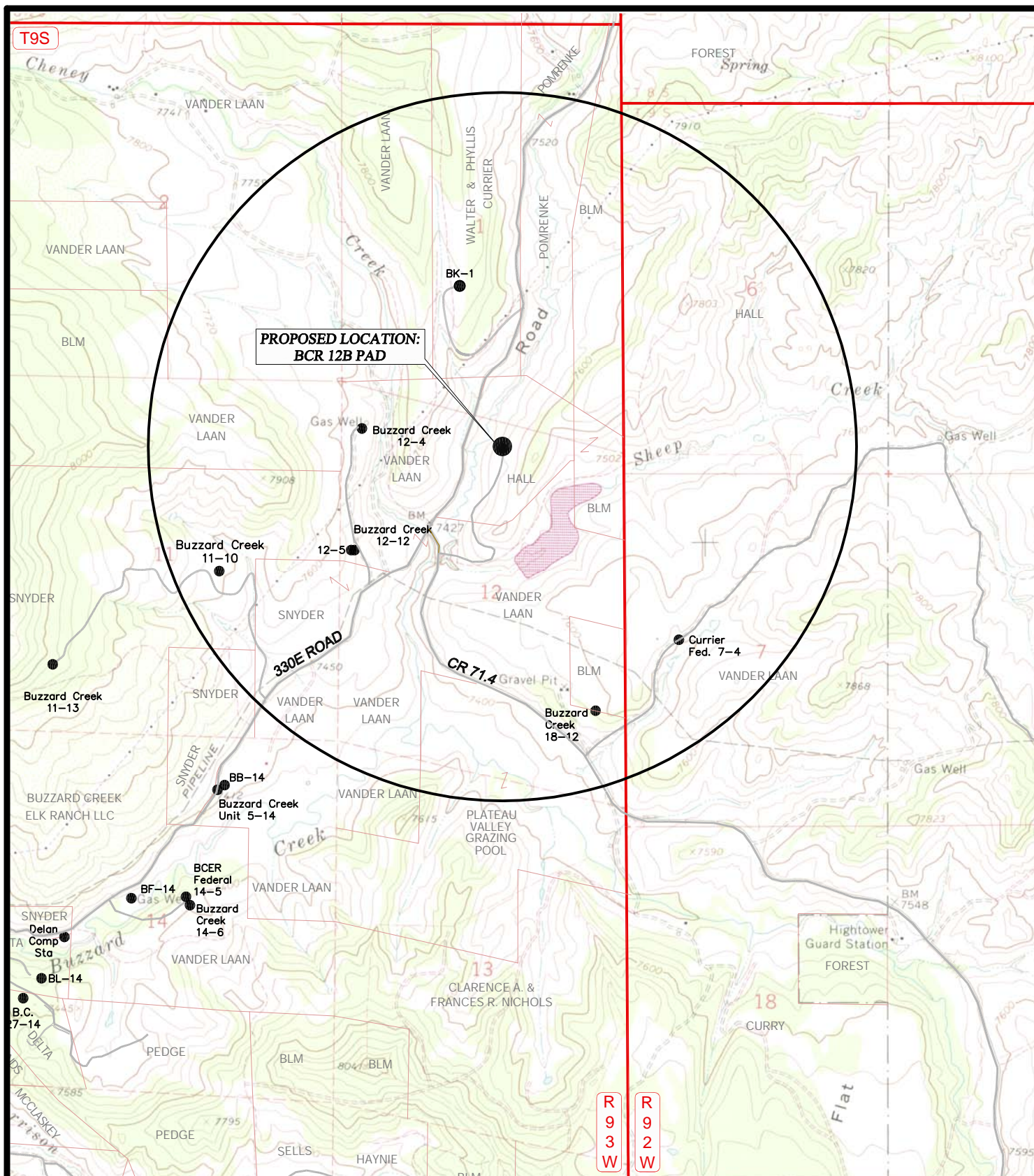
TOPOGRAPHIC MAP

PROJECT NUMBER
09-07-01
DATE: 10/5/09
SCALE: 1" = 2000'

TOPO
B

DELTA PETROLEUM CORP.

BCU 12B Pad
 SECTION 12, T9S, R93W, 6th, P.M.
 NW1/4 NE1/4



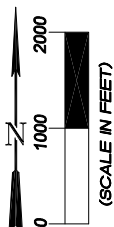
LEGEND

— EXISTING ROAD



Wasatch Surveying Associates

906 Main Street Evanston, Wyoming 82930
Phone No. (307) 789-4545 Fax 307-789-5722

**DELTA PETROLEUM CORP.**

BCU 12B Pad
SECTION 12, T9S, R93W, 6th, P.M.
NW1/4 NE1/4

TOPOGRAPHIC MAP

PROJECT NUMBER 09-07-01
DATE: 10/5/09
SCALE: 1" = 2000'

TOP C