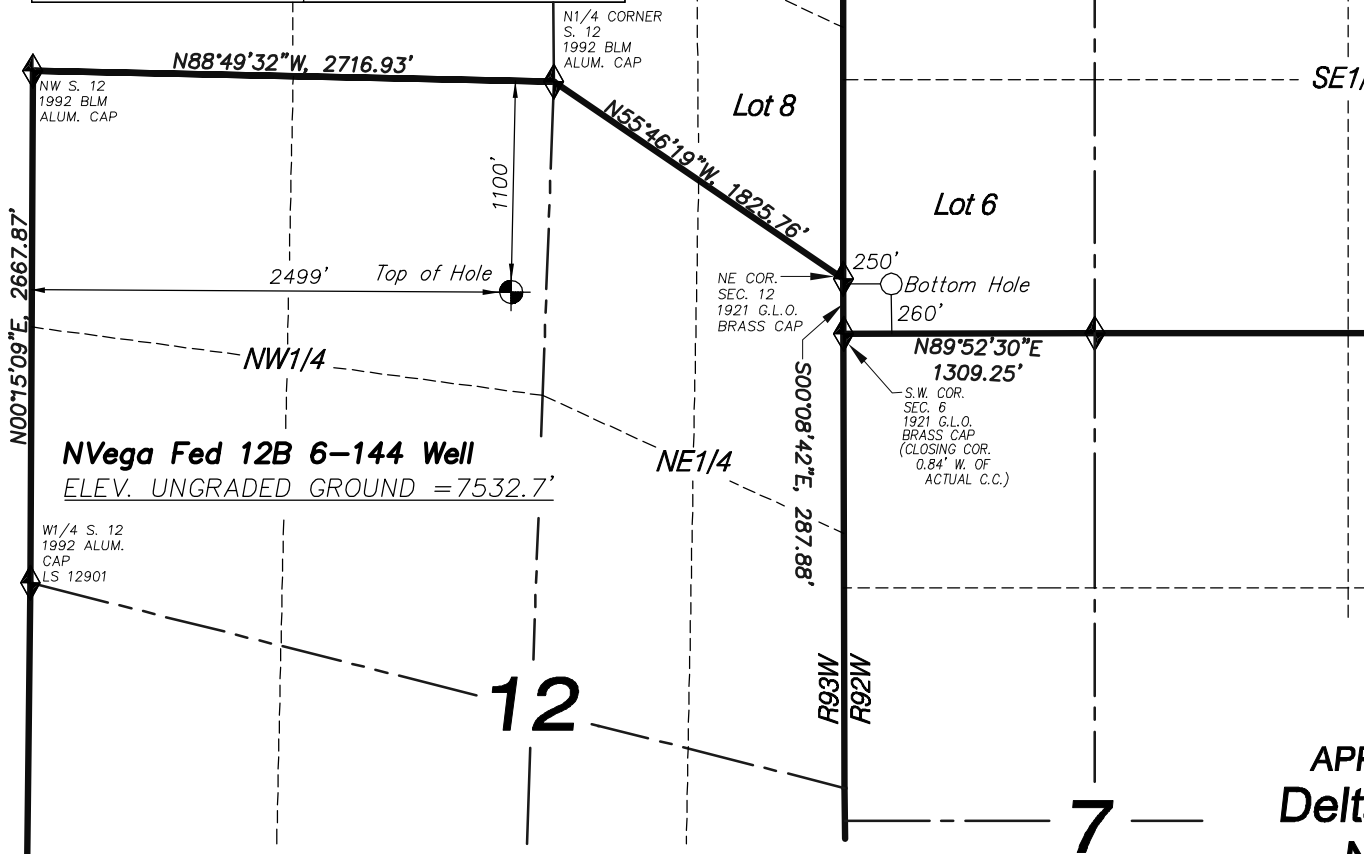


**Township 9 South
Range 93 West Range 92 West**

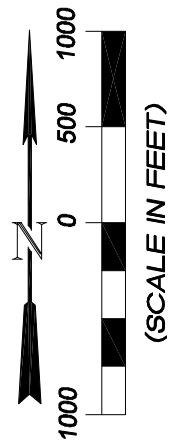
6

7

NVega Fed 12B 6-144	
NAD 83 (BOTTOM HOLE)	NAD 83 (SURFACE LOCATION)
LATITUDE = 39.295197°	LATITUDE = 39.295089°
LONGITUDE = 107.712349°	LONGITUDE = 107.719350°
NAD 27 (BOTTOM HOLE)	NAD 27 (SURFACE LOCATION)
LATITUDE = 39.295217°	LATITUDE = 39.295109°
LONGITUDE = 107.711734°	LONGITUDE = 107.718734°



LEGEND	
	SECTION CORNER LOCATED
	SURFACE LOCATION
	BOTTOM HOLE LOCATION
	RECORD LOCATION OF CORNER



CERTIFICATE OF SURVEYOR
I, TED TAGGART OF FRUITA, COLORADO HEREBY CERTIFY THAT THIS MAP WAS MADE FROM NOTES TAKEN DURING AN ACTUAL SURVEY MADE BY ME OR UNDER MY DIRECTION FOR DELTA PETROLEUM CORP. AND THAT THIS LOCATION HAS BEEN STAKED ON THE GROUND AS SHOWN HEREON.



**MAP to ACCOMPANY
APPLICATION for PERMIT to DRILL
Delta Petroleum Corporation
NVega Fed 12B 6-144
NE1/4 NW1/4, SECTION 12
T9S, R93W, 6th P.M.
MESA COUNTY, COLORADO**

NOTES

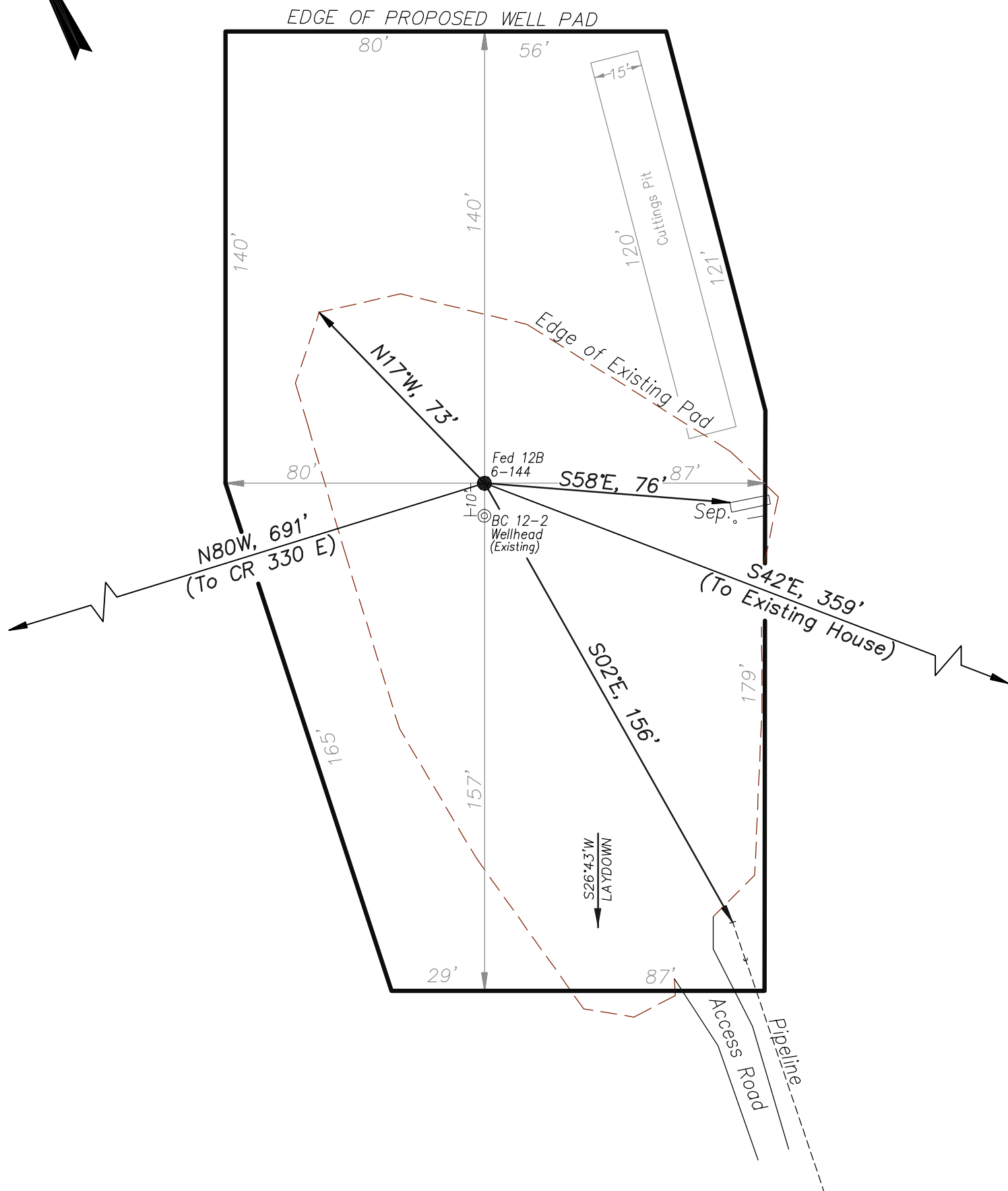
1. WELL FOOTAGES ARE MEASURED AT RIGHT ANGLES TO SECTION LINES.
2. BASIS OF BEARING: GEODETIC- BASED ON GPS OBSERVATIONS.
3. ELEVATIONS BASED ON GPS OBSERVATIONS, NAVD 88 (GEOID 03), POST PROCESSED USING NGS OPUS.
4. THE BOTTOM HOLE BEARS N88°47'46"E, 1982' FROM TOP OF HOLE.
5. SEE ADDENDUM TO LEGAL PLAT (SHEET 1a) FOR VISIBLE IMPROVEMENTS WITHIN 400 FEET OF THE PROPOSED WELLHEAD.
6. CONTROL FOR SURVEY WAS ESTABLISHED USING DIFFERENTIALLY CORRECTED GPS FROM AN OPUS BASED CONTROL NETWORK. WELL LOCATION WAS ESTABLISHED USING NON-GPS CONVENTIONAL METHODS, THEREFORE NO PDOP READING WAS TAKEN.



906 Main Street
Evanston, Wyoming 82930
Phone No. (307) 789-4545

Location Plat		Scale: 1" = 1000'	
Project No.	09-07-01	Date Surveyed:	10/09/09
Date Drawn:	10/21/09	Latest Revision Date:	

A circular seal with a rope-like border. The text "COLORADO REGISTERED" is at the top and "PROFESSIONAL LAND SURVEYOR" is at the bottom. In the center, it says "TED T. TAGGART", "10/21/09", and "37075". A signature "T. Taggart" is written across the bottom center.



(SCALE IN FEET)



<i>Addendum</i>		Scale: 1" = 40'	
Project No.	09-07-01	Date Surveyed:	10/5/09
Date Drawn:	10/21/09	Latest Revision Date:	