

# WILLIAMS PRODUCTION RMT COMPANY

T6S, R96W, 6th P.M.

1912 Brass Cap  
1.0' High  
Lat: 39.487700  
Long: 108.141758

1912 Brass Cap  
1.5' High  
Lat: 39.486767  
Long: 108.141744

WC 1912 Brass  
Cap, 1.4' High  
Lat: 39.473161  
Long: 108.150919

1912 Brass Cap  
1.5' High  
Lat: 39.486767  
Long: 108.141744

1912 Brass Cap  
1.5' High  
Lat: 39.486767  
Long: 108.141744

1912 Brass Cap  
1.5' High  
Lat: 39.486767  
Long: 108.141744

1912 Brass Cap  
1.5' High  
Lat: 39.486767  
Long: 108.141744

1912 Brass Cap  
1.5' High  
Lat: 39.486767  
Long: 108.141744

1912 Brass Cap  
1.5' High  
Lat: 39.486767  
Long: 108.141744

1912 Brass Cap  
1.5' High  
Lat: 39.486767  
Long: 108.141744

1912 Brass Cap  
1.5' High  
Lat: 39.486767  
Long: 108.141744

1912 Brass Cap  
1.5' High  
Lat: 39.486767  
Long: 108.141744

1912 Brass Cap  
1.5' High  
Lat: 39.486767  
Long: 108.141744

1912 Brass Cap  
1.5' High  
Lat: 39.486767  
Long: 108.141744

1912 Brass Cap  
1.5' High  
Lat: 39.486767  
Long: 108.141744

1912 Brass Cap  
1.5' High  
Lat: 39.486767  
Long: 108.141744

1912 Brass Cap  
1.5' High  
Lat: 39.486767  
Long: 108.141744

1912 Brass Cap  
1.5' High  
Lat: 39.486767  
Long: 108.141744

1912 Brass Cap  
1.5' High  
Lat: 39.486767  
Long: 108.141744

1912 Brass Cap  
1.5' High  
Lat: 39.486767  
Long: 108.141744

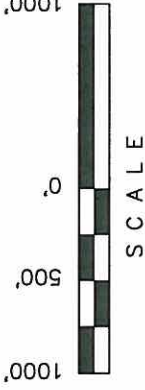
## BASIS OF ELEVATION

SPOT ELEVATION AT THE NORTHWEST CORNER OF SECTION 30, T5S, R95W, 6th P.M. TAKEN FROM THE FORKED GULCH QUADRANGLE, COLORADO, GARFIELD COUNTY, 7.5 MINUTE SERIES (TOPOGRAPHICAL MAP) PUBLISHED BY THE UNITED STATES DEPARTMENT OF THE INTERIOR, GEOLOGICAL SURVEY. SAID ELEVATION IS MARKED AS BEING 5966 FEET.

## BASIS OF BEARINGS

BASIS OF BEARINGS IS A G.P.S. OBSERVATION.

PLAT #1



1912 Brass Cap  
1.5' High  
Lat: 39.480372  
Long: 108.141708

1912 Brass Cap  
1.5' High  
Lat: 39.480372  
Long: 108.141708

1912 Brass Cap  
1.5' High  
Lat: 39.480372  
Long: 108.141708

1912 Brass Cap  
1.5' High  
Lat: 39.480372  
Long: 108.141708

1912 Brass Cap  
1.5' High  
Lat: 39.480372  
Long: 108.141708

1912 Brass Cap  
1.5' High  
Lat: 39.480372  
Long: 108.141708

1912 Brass Cap  
1.5' High  
Lat: 39.480372  
Long: 108.141708

1912 Brass Cap  
1.5' High  
Lat: 39.480372  
Long: 108.141708

1912 Brass Cap  
1.5' High  
Lat: 39.480372  
Long: 108.141708

## CERTIFICATE

THIS IS TO CERTIFY THAT THE ABOVE PLAT WAS PREPARED AND LOCATION AS SHOWN WAS STAKED ON THE GROUND FROM FIELD NOTES OF ACTUAL SURVEYS MADE BY ME OR UNDER MY SUPERVISION AND THAT THE SAME ARE TRUE AND CORRECT TO THE BEST OF MY KNOWLEDGE AND BELIEF.

REGISTERED LAND SURVEYOR  
REGISTRATION NO. 117492  
STATE OF COLORADO

1912 Brass Cap  
11' High  
Lat: 39.473206  
Long: 108.132189

## UNTAH ENGINEERING & LAND SURVEYING

85 SOUTH 200 EAST - VERNAL, UTAH 84078  
(435) 789-1017

SCALE 1" = 1000'	DATE SURVEYED: 12-02-09	DATE DRAWN: 02-08-10
PARTY B.B. B.J.	REFERENCES G.L.O. PLAT	
WEATHER COOL	FILE	
	WILLIAMS PRODUCTION RMT COMPANY	

PDOP = 1.7	NAD 83 (SURFACE LOCATION)
	Latitude = 39°28'45.62" (39.479339)
	Longitude = 108°08'50.70" (108.147417)
	STATE PLANE-COLO. CENTRAL-NAD 83
	N = 1610365.694
	E = 2252826.828

NAD 83 (TARGET BOTTOM HOLE)	NAD 83 (SURFACE LOCATION)
Latitude = 39°28'43.91" (39.478864)	Latitude = 39°28'45.62" (39.479339)
Longitude = 108°08'38.64" (108.144087)	Longitude = 108°08'50.70" (108.147417)
STATE PLANE-COLO. CENTRAL-NAD 83	STATE PLANE-COLO. CENTRAL-NAD 83
N = 1610165.200	N = 1610365.694
E = 2253766.600	E = 2252826.828

NOTE:  
SEE CURRENT FOOTAGE PLAT FOR EXISTING  
IMPROVEMENT WITHIN 400' OF THE PROPOSED  
WELL HEAD.

NOTE:  
SEE CURRENT FOOTAGE PLAT FOR EXISTING  
IMPROVEMENT WITHIN 400' OF THE PROPOSED  
WELL HEAD.

## LEGEND:

— = 90° SYMBOL

● = PROPOSED WELL HEAD.

▲ = SECTION CORNERS LOCATED.

LINE	BEARING	LENGTH
L1	N00°46'13"W	339.75'
L2	S89°57'42"W	264.66'
L3	N89°34'25"W	555.06'
L4	N00°59'47"W	472.36'
L5	S79°36'07"E	961.23'

1923 Brass Cap,  
Pile of Stone  
Lat: 39.463817  
Long: 108.227472

WC 1912 Brass  
Cap, 0.7' High  
Lat: 39.473161  
Long: 108.150919

1912 Brass Cap  
1.5' High  
Lat: 39.473161  
Long: 108.150919

1912 Brass Cap  
1.5' High  
Lat: 39.473161  
Long: 108.150919

1912 Brass Cap  
1.5' High  
Lat: 39.473161  
Long: 108.150919

1912 Brass Cap  
1.5' High  
Lat: 39.473161  
Long: 108.150919

1912 Brass Cap  
1.5' High  
Lat: 39.473161  
Long: 108.150919

1912 Brass Cap  
1.5' High  
Lat: 39.473161  
Long: 108.150919

1912 Brass Cap  
1.5' High  
Lat: 39.473161  
Long: 108.150919

PUCKETT GM 43-31  
Elev. Ungraded Ground = 6089'

PUCKETT GM 43-31  
Elev. Ungraded Ground = 6089'

PUCKETT GM 43-31  
Elev. Ungraded Ground = 6089'

PUCKETT GM 43-31  
Elev. Ungraded Ground = 6089'

PUCKETT GM 43-31  
Elev. Ungraded Ground = 6089'

PUCKETT GM 43-31  
Elev. Ungraded Ground = 6089'

PUCKETT GM 43-31  
Elev. Ungraded Ground = 6089'

PUCKETT GM 43-31  
Elev. Ungraded Ground = 6089'

PUCKETT GM 43-31  
Elev. Ungraded Ground = 6089'

PUCKETT GM 43-31  
Elev. Ungraded Ground = 6089'

PUCKETT GM 43-31  
Elev. Ungraded Ground = 6089'

PUCKETT GM 43-31  
Elev. Ungraded Ground = 6089'

PUCKETT GM 43-31  
Elev. Ungraded Ground = 6089'

PUCKETT GM 43-31  
Elev. Ungraded Ground = 6089'

PUCKETT GM 43-31  
Elev. Ungraded Ground = 6089'

PUCKETT GM 43-31  
Elev. Ungraded Ground = 6089'

PUCKETT GM 43-31  
Elev. Ungraded Ground = 6089'

PUCKETT GM 43-31  
Elev. Ungraded Ground = 6089'

PUCKETT GM 43-31  
Elev. Ungraded Ground = 6089'