

# WILLIAMS PRODUCTION RMT COMPANY

GM 14-32 GM 43-31

GM 414-32 GM 44-31

GM 514-32 GM 334-31

GM 34-31 GM 434-31

**GM 333-31**

LOCATED IN GARFIELD COUNTY, COLORADO

SECTION 31, T6S, R96W, 6th P.M.

GM 344-31

GM 444-31

GM 443-31

GM 433-31



PHOTO: VIEW FROM CORNER #5 TO LOCATION STAKE

CAMERA ANGLE: SOUTHERLY



PHOTO: VIEW FROM BEGINNING OF PROPOSED ACCESS

CAMERA ANGLE: WESTERLY



- Since 1964 -

**U  
E  
L  
S**

Uintah Engineering & Land Surveying

85 South 200 East Vernal, Utah 84078

(435) 789-1017 \* FAX (435) 789-1813

**LOCATION PHOTOS**

**12 04 09**  
MONTH DAY YEAR

TAKEN BY: BB.

DRAWN BY: Z.L.

REVISED: 00-00-00

PHOTO

**P1**



# WILLIAMS PRODUCTION RMT COMPANY

GM14-32 GM43-31  
GM414-32 GM44-31  
GM514-32 GM334-31  
GM34-31 GM434-31

**GM 333-31**

LOCATED IN GARFIELD COUNTY, COLORADO  
SECTION 31, T6S, R96W, 6th P.M.

GM344-31  
GM444-31  
GM443-31  
GM433-31



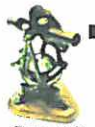
PHOTO: VIEW OF PROPOSED LOCATION STAKE

CAMERA ANGLE: NORTHERLY



PHOTO: VIEW OF PROPOSED LOCATION STAKE

CAMERA ANGLE: EASTERLY



- Since 1964 -

**UELS**

Uintah Engineering & Land Surveying  
85 South 200 East Vernal, Utah 84078  
(435) 789-1017 \* FAX (435) 789-1813

**LOCATION PHOTOS**

**12 04 09**  
MONTH DAY YEAR

PHOTO

**P2**

TAKEN BY: BB.

DRAWN BY: Z.L.

REVISED: 00-00-00



# WILLIAMS PRODUCTION RMT COMPANY

GM14-32 GM43-31

GM 414-32 GM44-31

GM 514-32

GM 34-31

GM334-31  
GM 434-31

**GM 333-31**

LOCATED IN GARFIELD COUNTY, COLORADO

SECTION 31, T6S, R96W, 6th P.M.

GM 344-31

GM 444-31

GM 443-31

GM 433-31



PHOTO: VIEW OF PROPOSED LOCATION STAKE

CAMERA ANGLE: SOUTHERLY



PHOTO: VIEW OF PROPOSED LOCATION STAKE

CAMERA ANGLE: WESTERLY



- Since 1964 -

**UELS**

Uintah Engineering & Land Surveying

85 South 200 East Vernal, Utah 84078  
(435) 789-1017 \* FAX (435) 789-1813

LOCATION PHOTOS

**12** **04** **09**  
MONTH DAY YEAR

TAKEN BY: B.B.

DRAWN BY: Z.L.

REVISED: 00-00-00

PHOTO  
**P3**