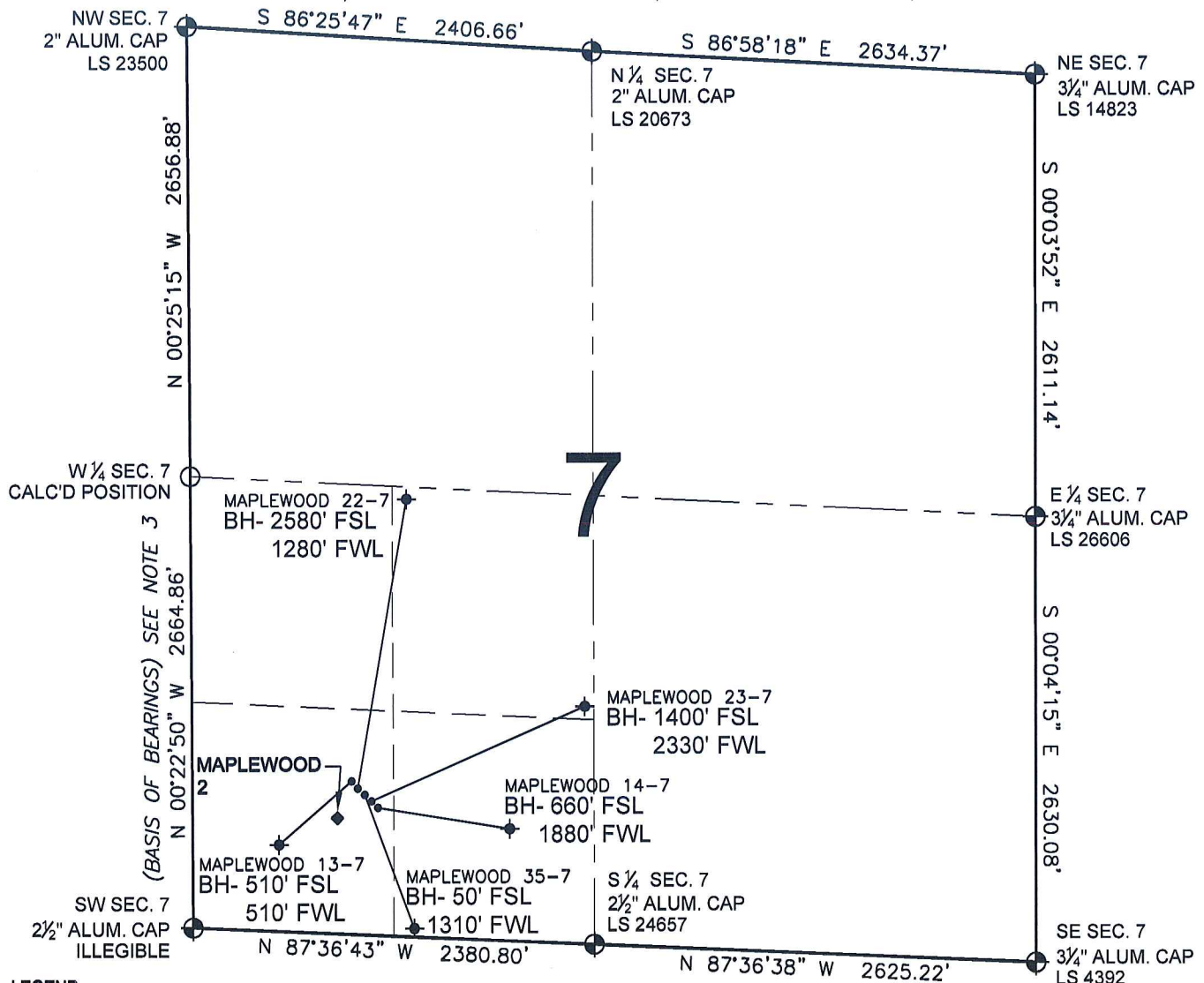


PAD DRAWING - MAPLEWOOD 5 PAD

SECTION 7, TOWNSHIP 4 NORTH, RANGE 67 WEST, 6TH P.M.



LEGEND

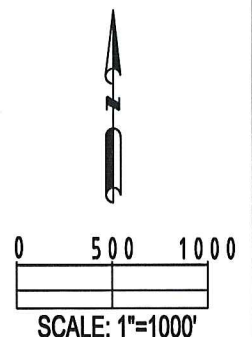
- ⊕ = EXISTING MONUMENT
- ⬢ = BOTTOM HOLE
- BH= BOTTOM HOLE
- = PROPOSED WELL
- ◆ = EXISTING WELL

NOTES:

- THIS SURVEY WAS DONE BY GPS METHODS AND CONFORMS TO THE MINIMUM STANDARDS SET BY THE C.O.G.C.C., RULE NO. 215
- ELEVATIONS SHOWN AT THE WELL HEAD, AS WELL AS HORIZONTAL CONTROL, ARE BASED ON GPS-RTK VALUES DERIVED FROM DOING 2-HOUR STATIC GPS SESSIONS AND REDUCTIONS USING O.P.U.S. SOLUTIONS.
VERTICAL = NAVD88; HORIZONTAL = NAD83/92
- THE BEARINGS SHOWN HEREON ARE BASED ON GPS OBSERVATIONS BETWEEN THE MONUMENTS SHOWN HEREON AS FOUND ON THE FIELD DATE BELOW.
- DISTANCES SHOWN ARE AT GROUND LEVEL, AS MEASURED IN THE FIELD, WITH TIES TO WELLS MEASURED AT A PERPENDICULAR TO SECTION LINES.

NOTES:

- MAPLEWOOD 14-7 TO BE AT 872' FSL, 998' FWL.
- BOTTOM HOLE AT 660' FSL & 1880' FWL.
- MAPLEWOOD 23-7 TO BE AT 879' FSL, 984' FWL.
- BOTTOM HOLE AT 1400' FSL & 2330' FWL.
- MAPLEWOOD 35-7 TO BE AT 887' FSL, 970' FWL.
- BOTTOM HOLE AT 50' FSL & 1310' FWL.
- MAPLEWOOD 22-7 TO BE AT 894' FSL, 956' FWL.
- BOTTOM HOLE AT 2580' FSL & 1280' FWL.
- MAPLEWOOD 13-7 TO BE AT 902' FSL, 942' FWL.
- BOTTOM HOLE AT 510' FSL & 510' FWL.
- MAPLEWOOD 2 IS 857' FSL, 917' FWL.



REVISIONS

INITIAL	DATE
SMF	12-01-09

PREPARED BY:



KERR-MCGEE OIL & GAS ONSHORE LP

FIELD DATE:
11-18-09

DRAWING DATE:
11-20-09

BY:
SMF

PAD NAME:
MAPLEWOOD 5 PAD

SURFACE LOCATION:

WELD COUNTY, COLORADO
SW 1/4 SW 1/4, SEC. 7, T4N, R67W