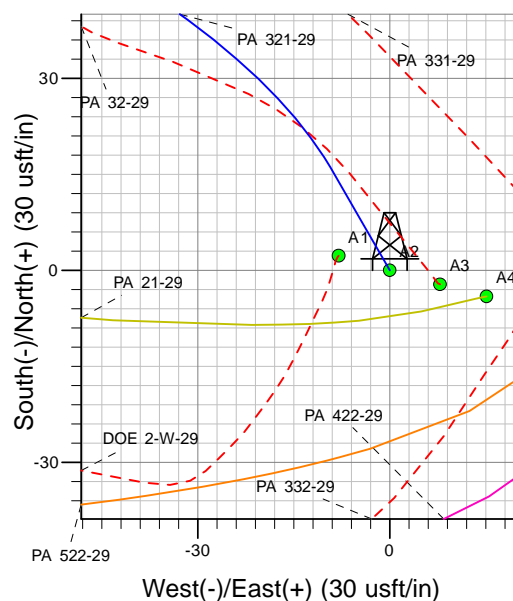
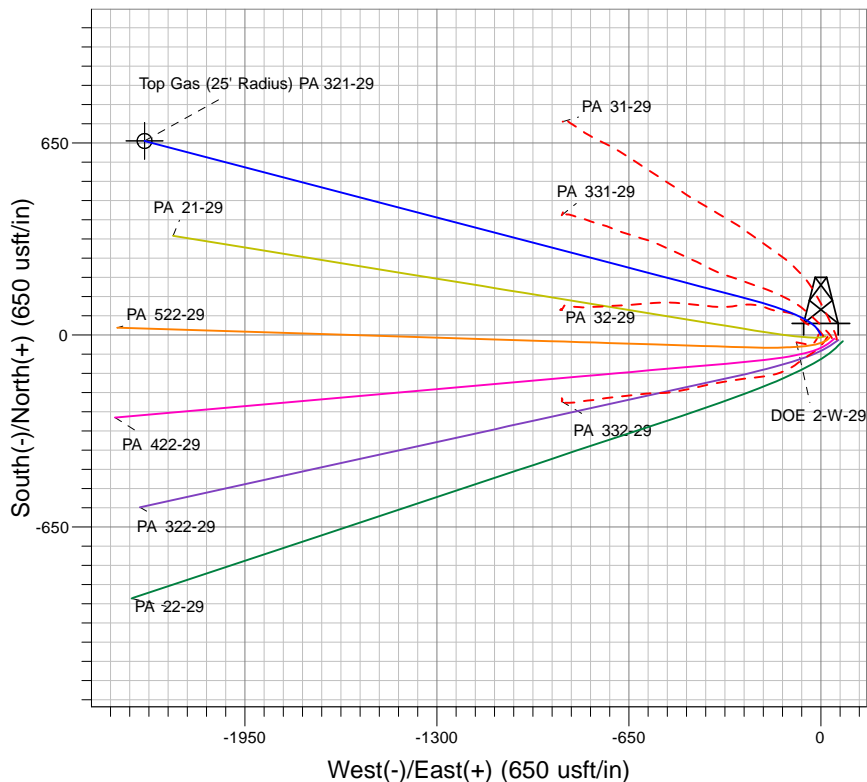
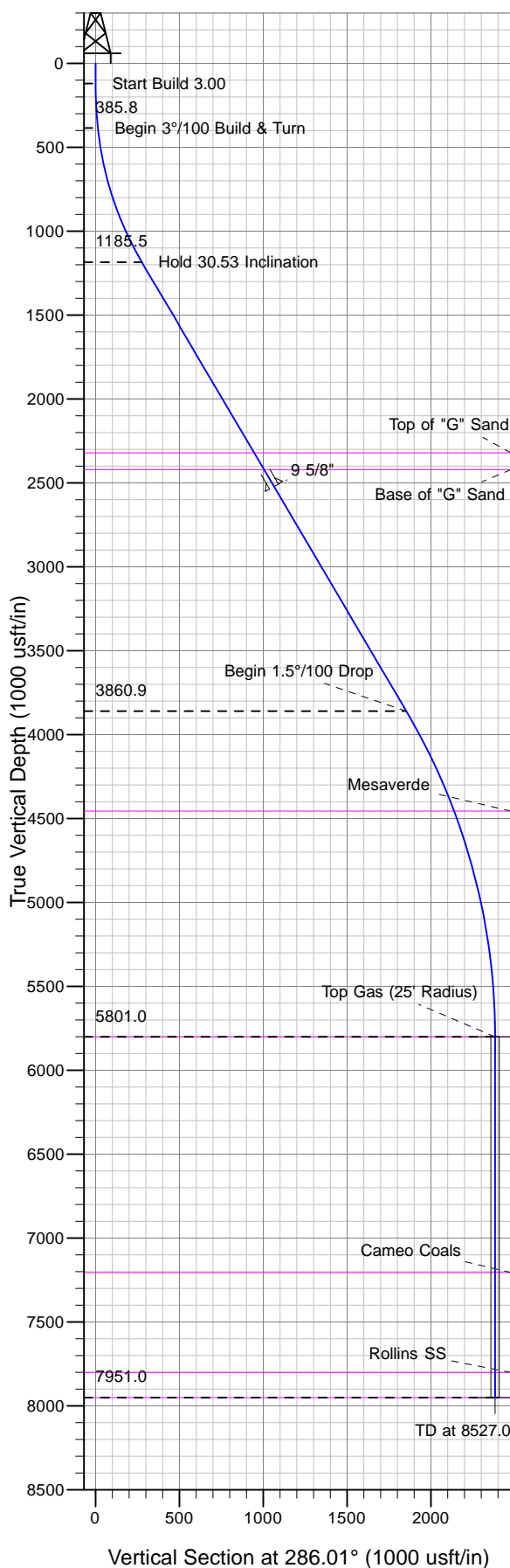




Well Name: PA 321-29  
Surface Location: DOE 2-W-29 Pad  
North American Datum 1983 , US State Plane 1983, Colorado Central Zone  
Ground Elevation: 5895.0  
+N/-S +E/-W Northing Easting Latitude Longitude Slot  
0.0 0.0 1616107.50 2290010.10 39° 29' 52.788 N 108° 0' 58.677 W A2  
Corrected Elev. @ 5916.0usft (Cyclone 17 (21' KB) kjs)



Project: PA 29-06S-095W  
Site: DOE 2-W-29 Pad  
Well: PA 321-29  
Plan #2 08Jan10 kjs

Azimuths to True North  
Magnetic North: 10.58°  
Magnetic Field  
Strength: 52460.4snT  
Dip Angle: 65.80°  
Date: 8/17/2009  
Model: IGRF2005-10

#### ANNOTATIONS

| TVD    | MD     | Inc   | Azi    | +N/-S | +E/-W   | Vsect  | Departure | Annotation                |
|--------|--------|-------|--------|-------|---------|--------|-----------|---------------------------|
| 120.0  | 120.0  | 0.00  | 0.00   | 0.0   | 0.0     | 0.0    | 0.0       | Start Build 3.00          |
| 385.8  | 386.7  | 8.00  | 330.00 | 16.1  | -9.3    | 13.4   | 18.6      | Begin 3°/100 Build & Turn |
| 1185.5 | 1236.1 | 30.53 | 284.67 | 123.7 | -251.6  | 275.9  | 287.8     | Hold 30.53 Inclination    |
| 3860.9 | 4342.0 | 30.53 | 284.67 | 523.1 | -1777.7 | 1853.0 | 1865.4    | Begin 1.5°/100 Drop       |
| 5801.0 | 6377.0 | 0.00  | 0.00   | 657.2 | -2289.9 | 2382.3 | 2394.8    | Top Gas                   |
| 7951.0 | 8527.0 | 0.00  | 0.00   | 657.2 | -2289.9 | 2382.3 | 2394.8    | TD at 8527.0              |