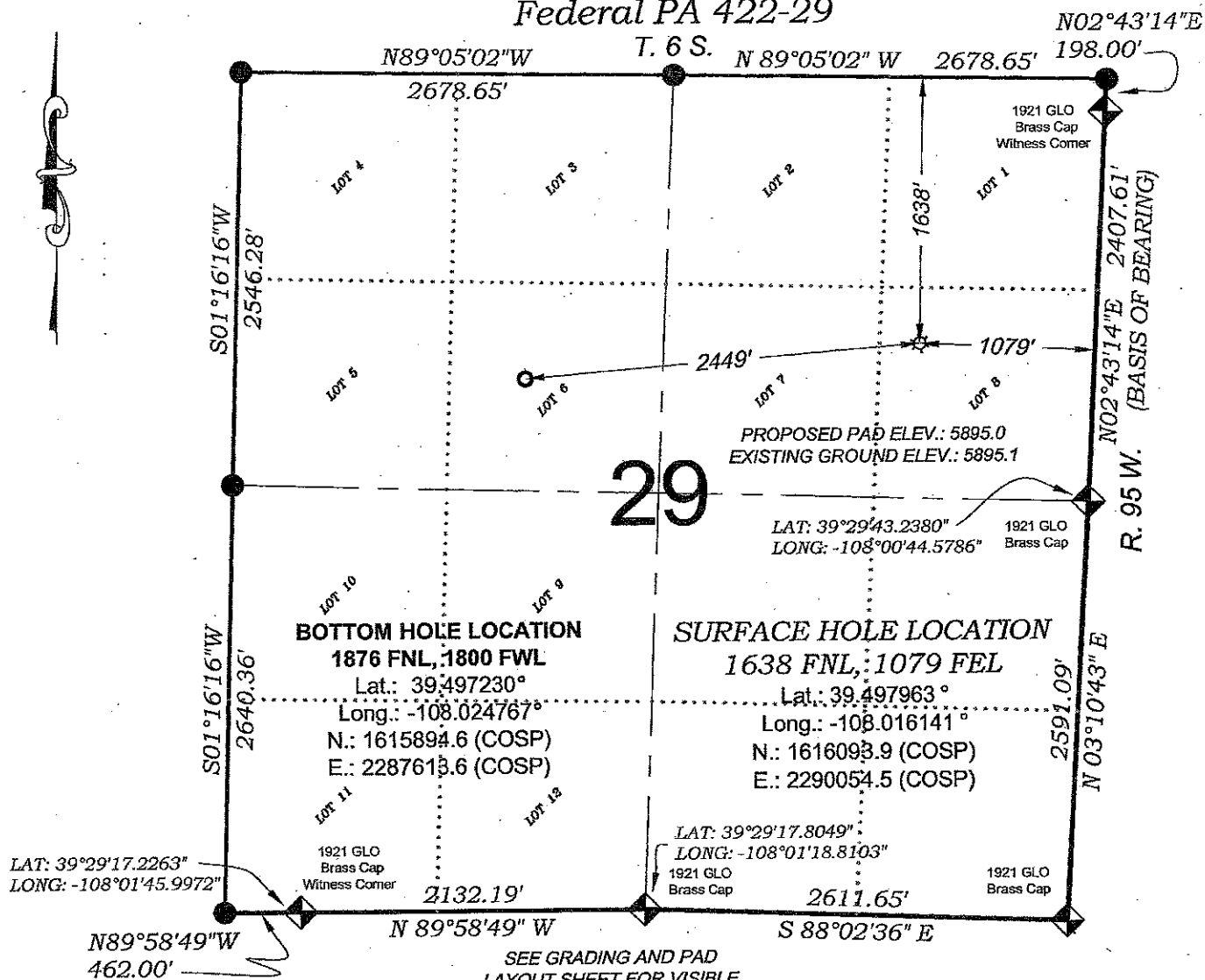


Federal PA 422-29



SEE GRADING AND PAD LAYOUT SHEET FOR VISIBLE IMPROVEMENTS WITHIN 200' OF THIS LOCATION



- LEGEND -

- FIELD LOCATED SECTION MONUMENTS AS DESCRIBED
- FIELD SURVEYED WELL LOCATION
- CALCULATED BOTTOM HOLE LOCATION
- CALCULATED SECTION CORNER LOCATION

SURVEYORS STATEMENT

I, MICHAEL J. LANGHORNE, A REGISTERED LAND SURVEYOR IN THE STATE OF COLORADO DO HEREBY CERTIFY THAT THE SURVEY SHOWN HEREON WAS PREPARED UNDER MY DIRECT SUPERVISION AND HAS BEEN STAKED ON THE GROUND AS SHOWN ON THE PLAT AND CHECKING THAT THIS MAP IS A TRUE REPRESENTATION THEREOF.

Michael J. Langhorne

MICHAEL J. LANGHORNE, COLORADO REGISTRATION NO. 36572
FOR AND ON BEHALF OF
BOOKCLIFF SURVEY SERVICES, INC.

REFERENCES

- DEPENDENT RESURVEY T. 6 S., R. 95 W., 6th P.M. (GLO PLAT)
- U.S.G.S. QUAD: PARACHUTE, CO

NOTES

- ELEVATIONS BASED ON N.A.V.D. 1988 PUBLISHED COORDINATES.
- LATITUDES AND LONGITUDES ARE BASED ON NAD 83, PUBLISHED COORDINATES
- STATE PLANE COORDINATES ARE BASED ON COLORADO CENTRAL ZONE, U.S. SURVEY FEET.
- ELEVATION MASK SET TO 15"
- GPS OPERATOR J. KIRKPATRICK, OBSERVED A PDOP OF LESS THAN 6.0
- SURFACE AND BOTTOM HOLE LOCATIONS ARE MEASURED 90° FROM SECTION LINES.

WELL LOCATION PLAT Prepared for:

Williams Williams Production, RMT

SE1/4 NE1/4, SECTION 29
T. 6 S., R. 95 W. of the 6th P.M.
GARFIELD COUNTY, COLORADO

SURVEY DATE: 11/10/08
MAP DATE: 1/21/10
SCALE: 1" = 1000'
PLAT: 1 of 9
PROJECT: Williams

BOOKCLIFF
Survey Services, Inc.