

Federal DOE 2-W-29

PA 321-29, PA 21-29, PA 522-29, PA 422-29, PA 322-29, PA 22-29

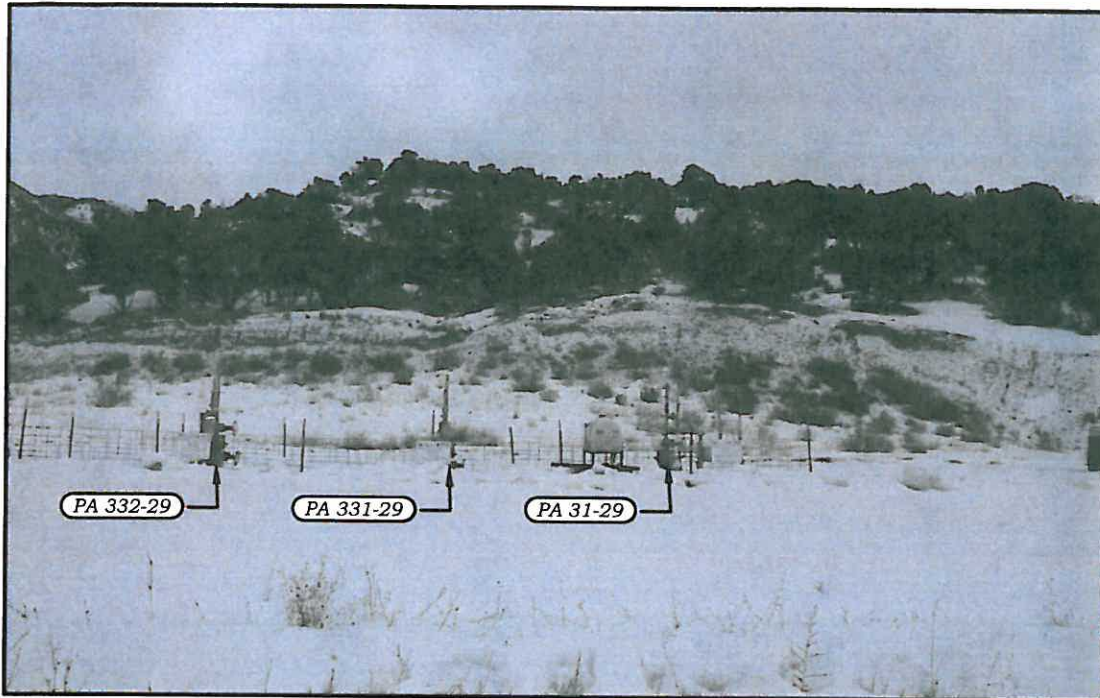


PHOTO: VIEW FROM PAD CENTER

CAMERA ANGLE: SOUTH

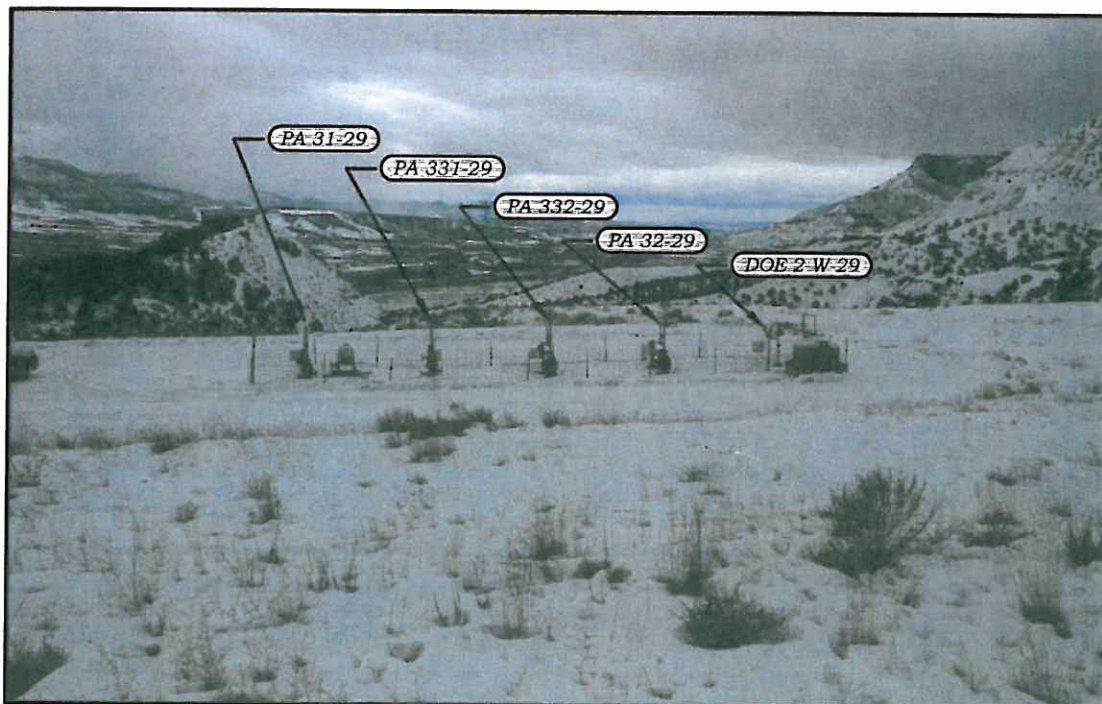


PHOTO: VIEW FROM PAD CENTER

CAMERA ANGLE: WEST

136 East Third Street
Rifle, Colorado 81650
Ph. (970) 625-1330
Fax. (970) 625-2773



BOOKCLIFF
Survey Services, Inc.

PHOTO DATE: 1/22/10
TAKEN BY: JK
DRAWN BY: DPM
SHEET: 2 of 3
PROJECT: Williams

LOCATION PHOTOS Prepared for:
Williams. Williams Production, RMT

SE1/4 NE1/4, SECTION 29
T. 6 S., R. 95 W. of the 6th. P.M.
GARFIELD COUNTY, COLORADO

Federal DOE 2-W-29

PA 321-29, PA 21-29, PA 522-29, PA 422-29, PA 322-29, PA 22-29

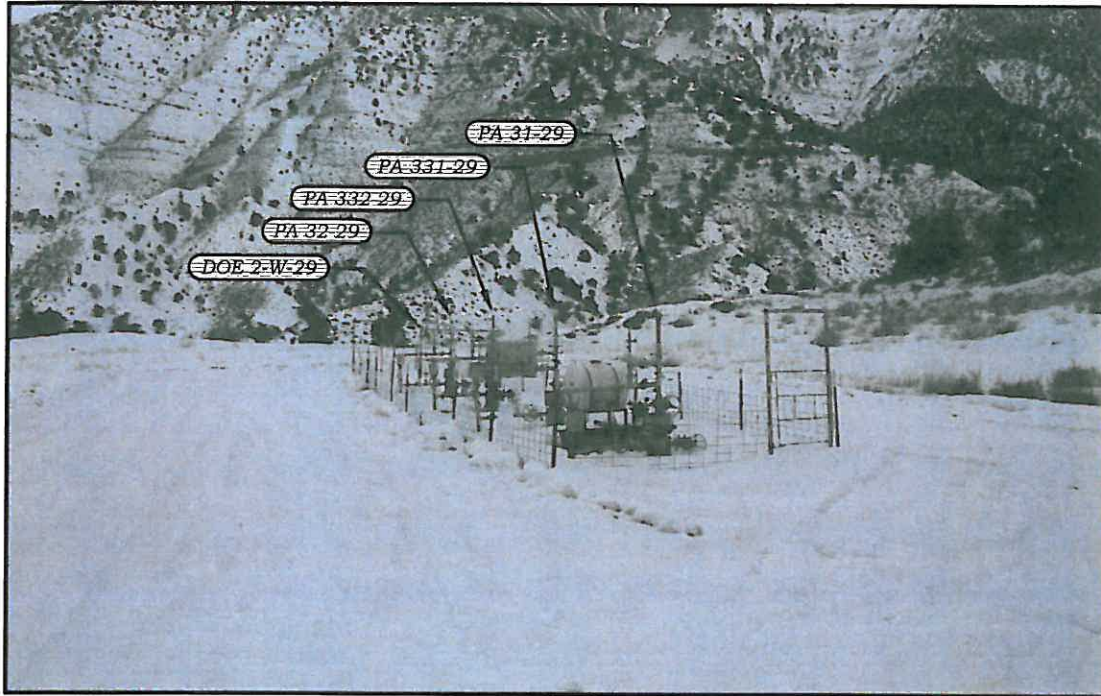


PHOTO: VIEW FROM PAD CENTER

CAMERA ANGLE: NORTH

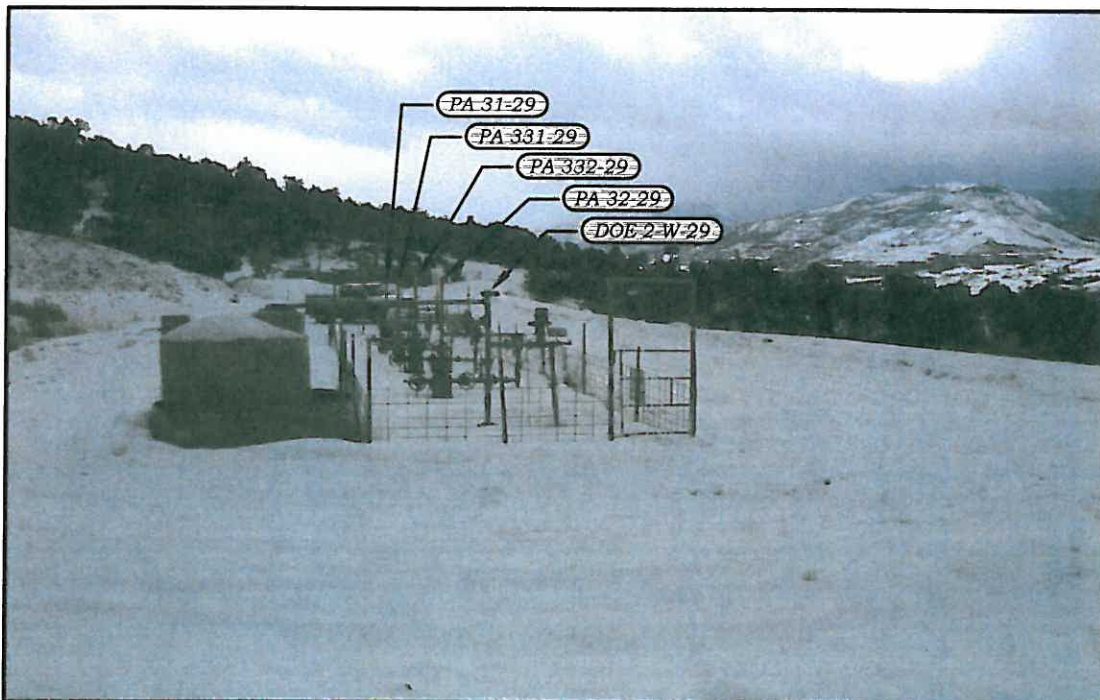


PHOTO: VIEW FROM PAD CENTER

CAMERA ANGLE: SOUTH

136 East Third Street
Rifle, Colorado 81650
Ph. (970) 625-1330
Fax (970) 625-2773



BOOKCLIFF
Survey Services, Inc.

PHOTO DATE: 1/22/10
TAKEN BY: JK
DRAWN BY: DPM
SHEET: 1 of 3
PROJECT: Williams

LOCATION PHOTOS Prepared for:



Williams Production, RMT

SE1/4 NE1/4, SECTION 29
T. 6 S., R. 95 W. of the 6th. P.M.
GARFIELD COUNTY, COLORADO

Federal DOE 2-W-29

PA 321-29, PA 21-29, PA 522-29, PA 422-29, PA 322-29, PA 22-29

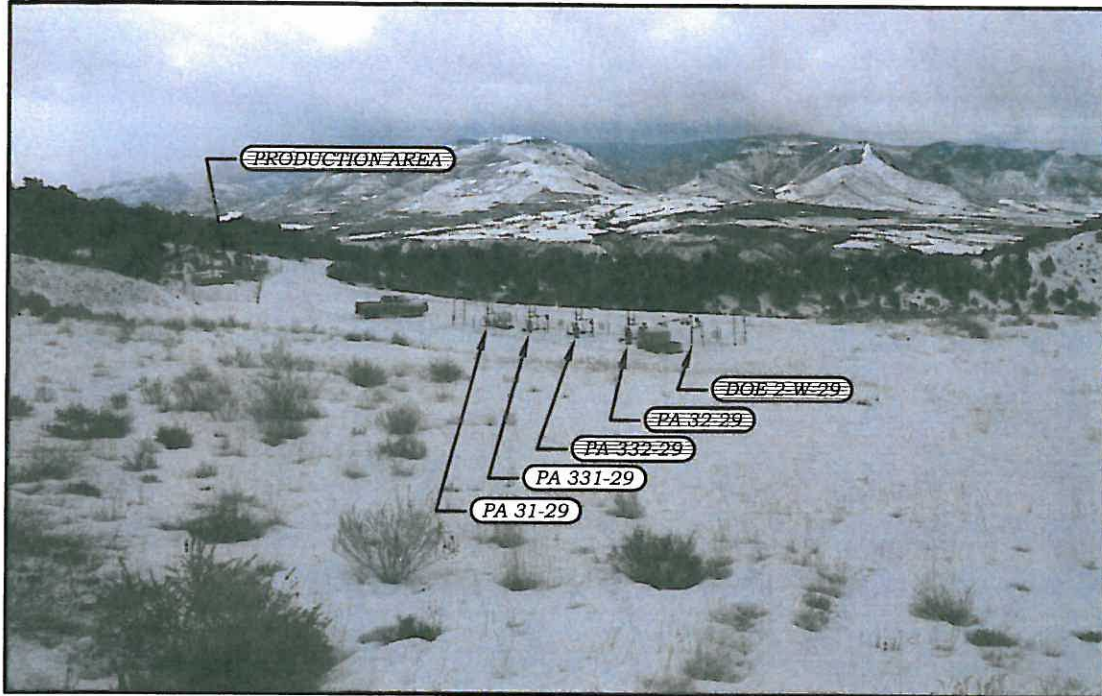


PHOTO: VIEW OF OVERALL DRILL PAD

CAMERA ANGLE: SOUTHEAST

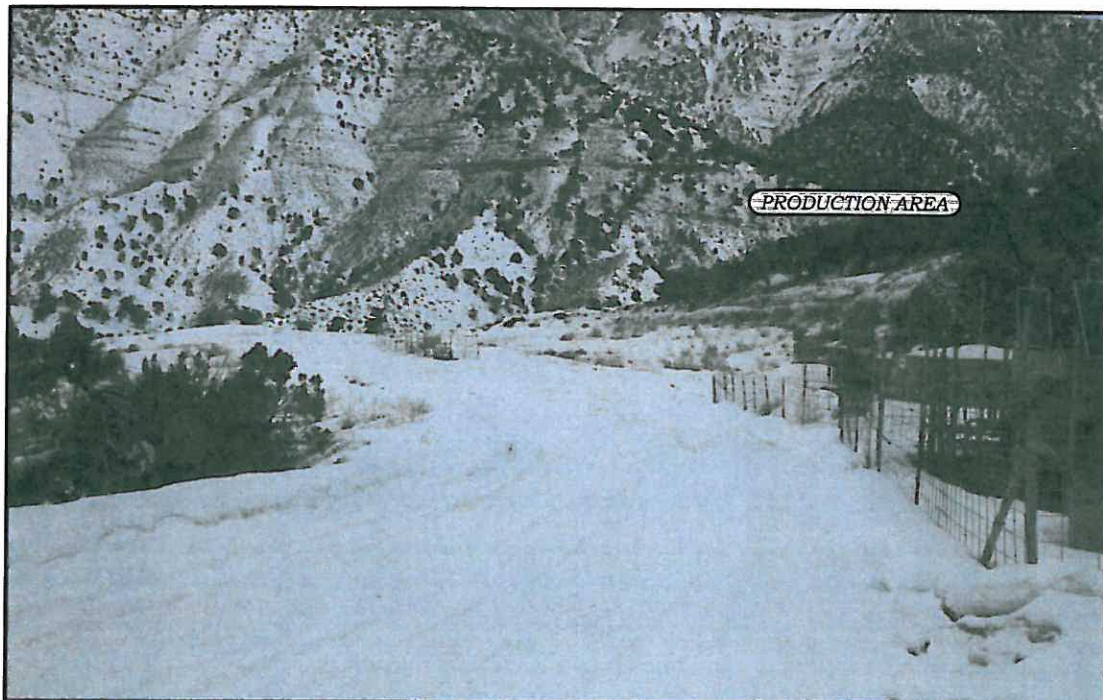


PHOTO: VIEW OF EXISTING ACCESS ROAD

CAMERA ANGLE: NORTHWEST

136 East Third Street
Rifle, Colorado 81650
Ph. (970) 625-1330
Fax (970) 625-2773



BOOKCLIFF
Survey Services, Inc.

PHOTO DATE: 1/22/10
TAKEN BY: JK
DRAWN BY: DPM
SHEET: 3 of 3
PROJECT: Williams

LOCATION PHOTOS Prepared for:



Williams Production, RMT

SE1/4 NE1/4, SECTION 29
T. 6 S., R. 95 W. of the 6th. P.M.
GARFIELD COUNTY, COLORADO