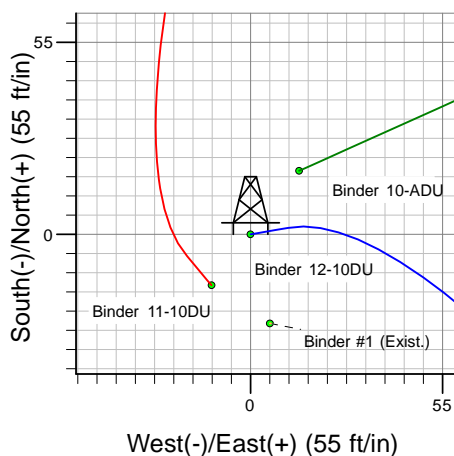
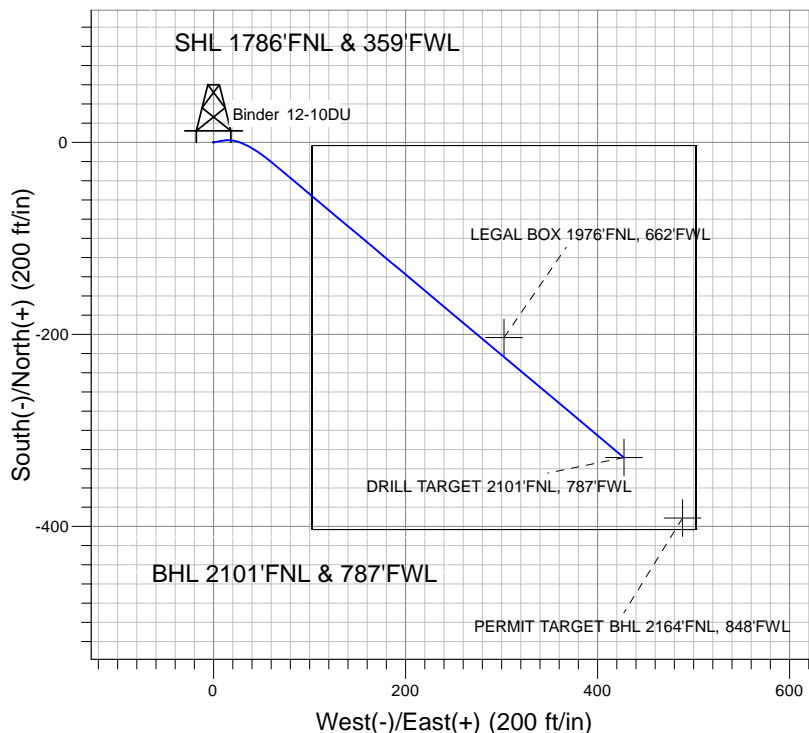
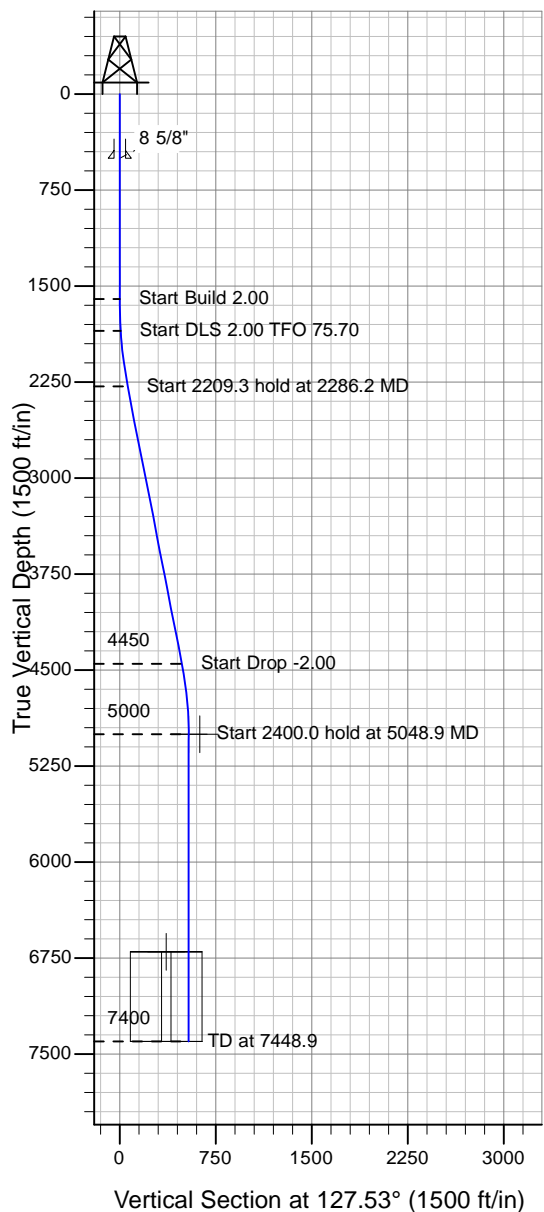


Well Name: Binder 12-10DU

Surface Location: Binder 12-10DU Pad Sec.10-T4N-R67W
 North American Datum 1983 , US State Plane 1983 , Colorado Northern Zone
 Ground Elevation: 4760.0

+N/-S+E/-W Northing Easting Latitude Longitude Slot
 0.0 0.01363416.91 3171363.42 40° 19' 45.660 N 104° 53' 7.260 W
 Original Well Elev WELL @ 4773.0ft (Original Well Elev)

PETROLEUM DEVELOPMENT CORP Weld County CO



Binder 12-10DU Pad Sec.10-T4N-R67W
 Binder 12-10DU
 Plan #2 (12-30-09)
 13:57, December 30 2009



Azimuths to True North
 Magnetic North: 9.10°

Magnetic Field
 Strength: 53266.2snT
 Dip Angle: 67.03°
 Date: 11/20/2009
 Model: IGRF200510

WELLBORE TARGET DETAILS (LAT/LONG)

Name	TVD	+N/-S	+E/-W	Latitude	Longitude	Shape
DRILL TARGET 2101'FNL, 787'FWL	5000.0	-328.4	427.5	40° 19' 42.415 N	104° 53' 1.740 W	Point
PERMIT TARGET BHL 2164'FNL, 848'FWL	5000.0	-391.4	488.5	40° 19' 41.792 N	104° 53' 0.952 W	Point
LEGAL BOX 1976'FNL, 662'FWL	6700.0	-203.4	302.5	40° 19' 43.650 N	104° 53' 3.354 W	Rectangle (Sides: L400.0 W400.0)

SECTION DETAILS

Sec	MD	Inc	Azi	TVD	+N/-S	+E/-W	DLeg	TFace	VSec	Target
1	0.0	0.00	0.00	0.0	0.0	0.0	0.00	0.00	0.0	
2	1600.0	0.00	0.00	1600.0	0.0	0.0	0.00	0.00	0.0	
3	1850.0	5.00	80.00	1849.7	1.9	10.7	2.00	80.00	7.4	
4	2286.2	11.07	129.97	2281.9	-21.7	61.6	2.00	75.70	62.1	
5	4495.5	11.07	129.97	4450.1	-294.2	386.7	0.00	0.00	485.8	
6	5048.9	0.00	0.00	5000.0	-328.4	427.5	2.00	180.00	539.1	DRILL TARGET 2101'FNL, 787'FWL
7	7448.9	0.00	0.00	7400.0	-328.4	427.5	0.00	0.00	539.1	