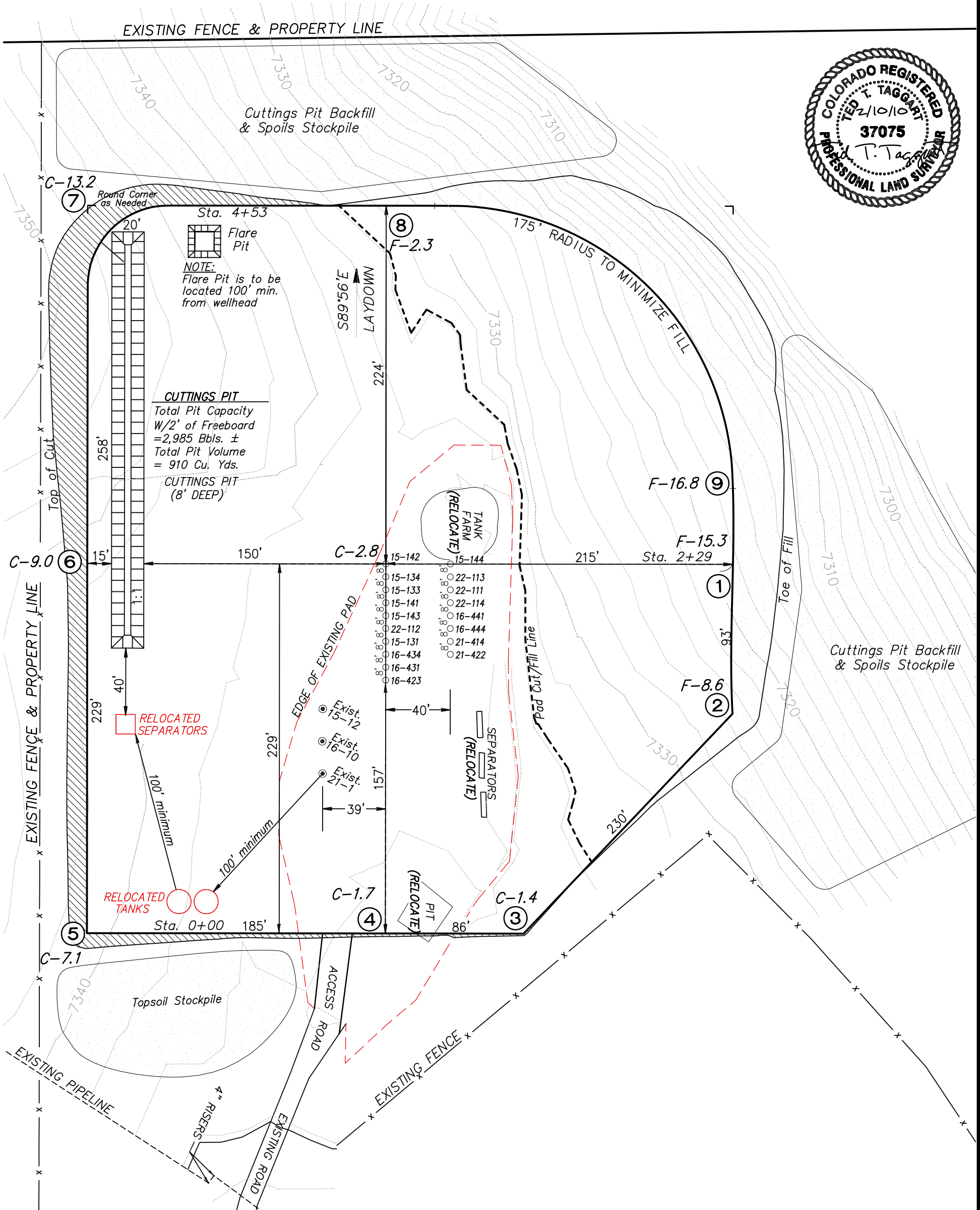
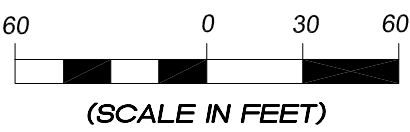


Delta Petroleum Corporation
LOCATION LAYOUT FOR
PAD BCU 16P
SECTION 16, T9S, R93W, 6th P.M.



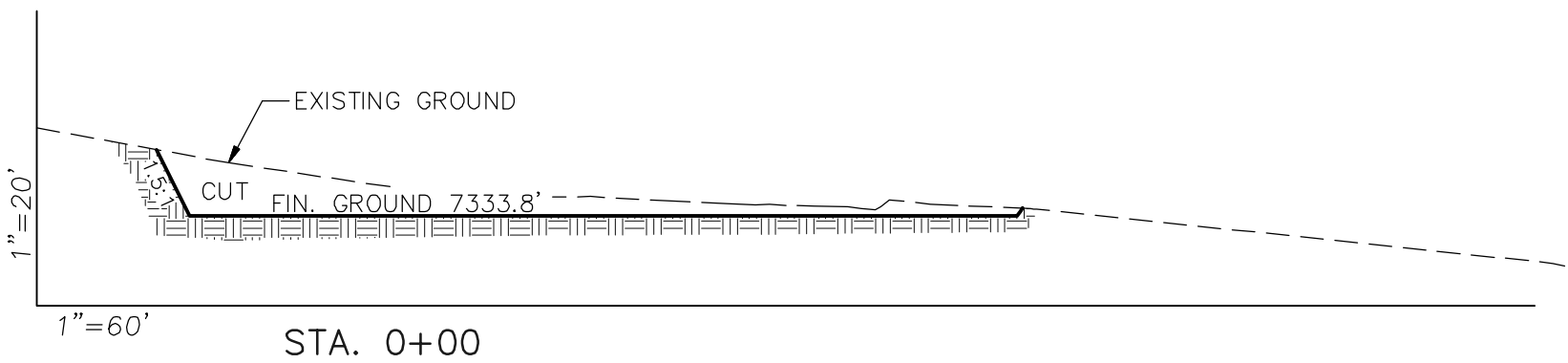
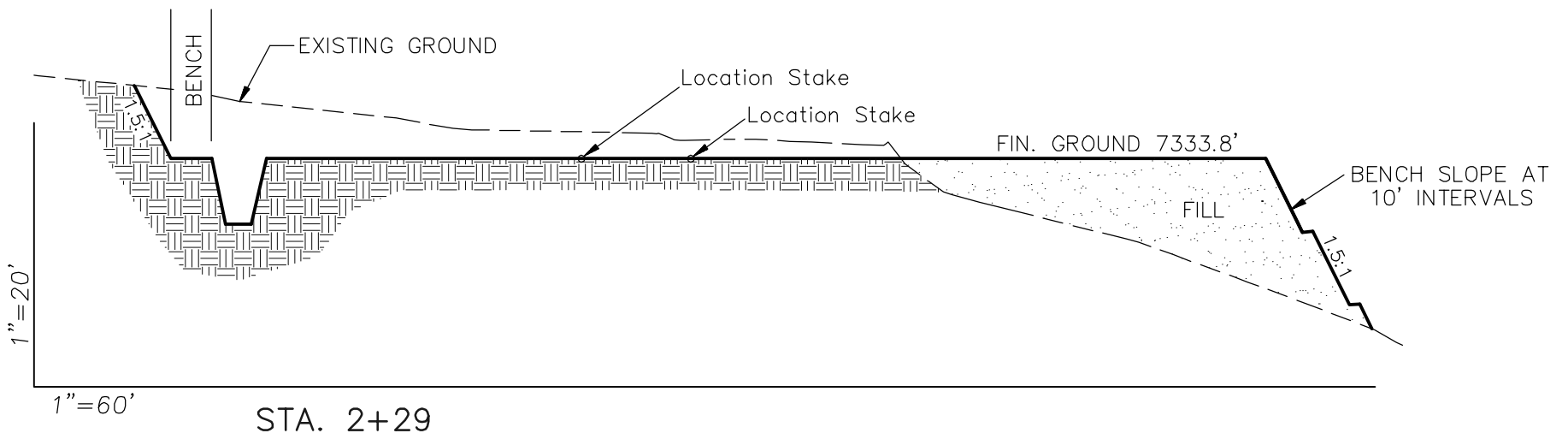
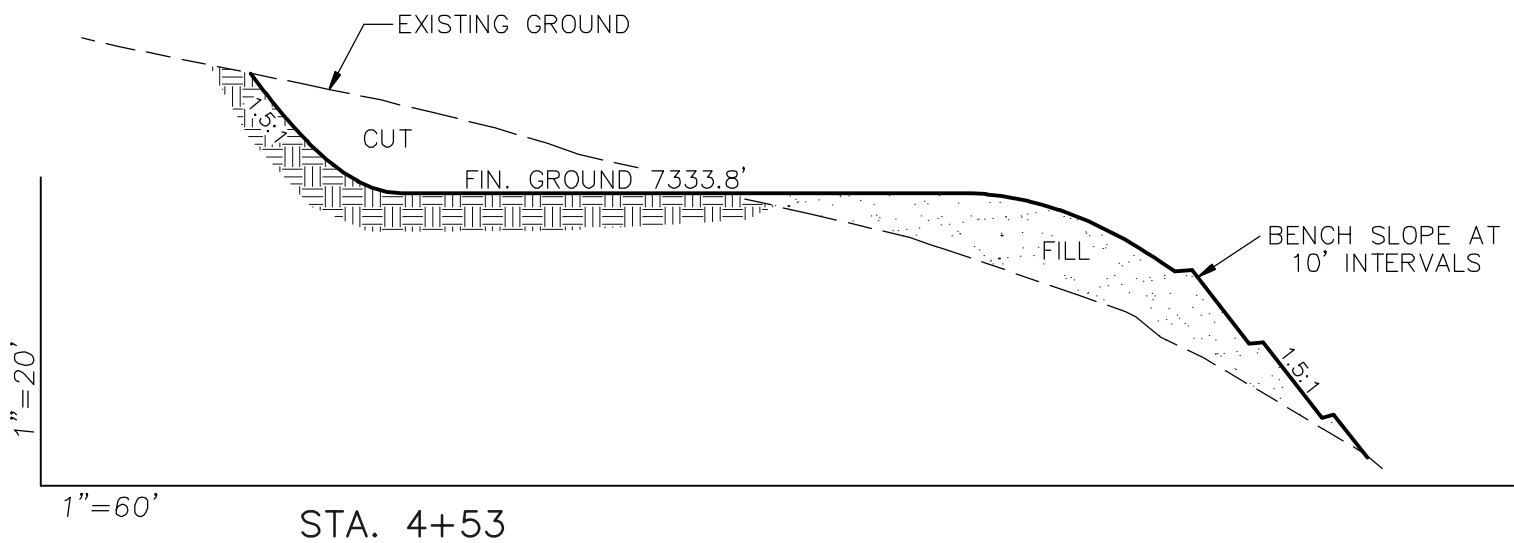
NOTES:
Elev. Ungraded Ground At Loc. Stake = 7336.6'
FINISHED GRADE ELEV. AT LOC. STAKE = 7333.8'



Location Layout		Scale: 1" = 60'	SHEET 6
Project No.	08-07-07	Date Surveyed: 4/28/08	
Date Drawn:	6/30/08	Latest Revision Date: 2/10/10	



Delta Petroleum Corporation
LOCATION LAYOUT FOR
PAD BCU 16P
SECTION 16, T9S, R93W, 6th P.M.



APPROXIMATE YARDAGES

CUT
(6") Topsoil Stripping = 2945 Cu. Yds.
Remaining Location = 20,733 Cu. Yds.

TOTAL CUT = 23,678 CU. YDS.
FILL = 18,177 CU. YDS.

EXCESS MATERIAL = 5501 Cu. Yds.
EXCESS UNBALANCE = 0 Cu. Yds.
(After Interim Rehabilitation)

APPROXIMATE ACREAGES

APPROX. WELL DISTURBANCE = ±6.2 ACRES
ACCESS ROAD DISTURBANCE = ±0.0 ACRES

TOTAL = ±6.2 ACRES

NOTE:

ALL CUT AND FILL SLOPES ARE
AT 1.5:1 UNLESS OTHERWISE NOTED.



906 Main Street
Evanston, Wyoming 82930
Phone No. (307) 789-4545

Cross Sections		Scale: As Shown	SHEET 7
Project No.	08-07-07	Date Surveyed: 4/28/08	
Date Drawn:	6/30/08	Latest Revision Date: 3/08/10	