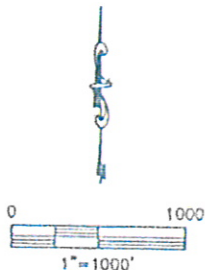
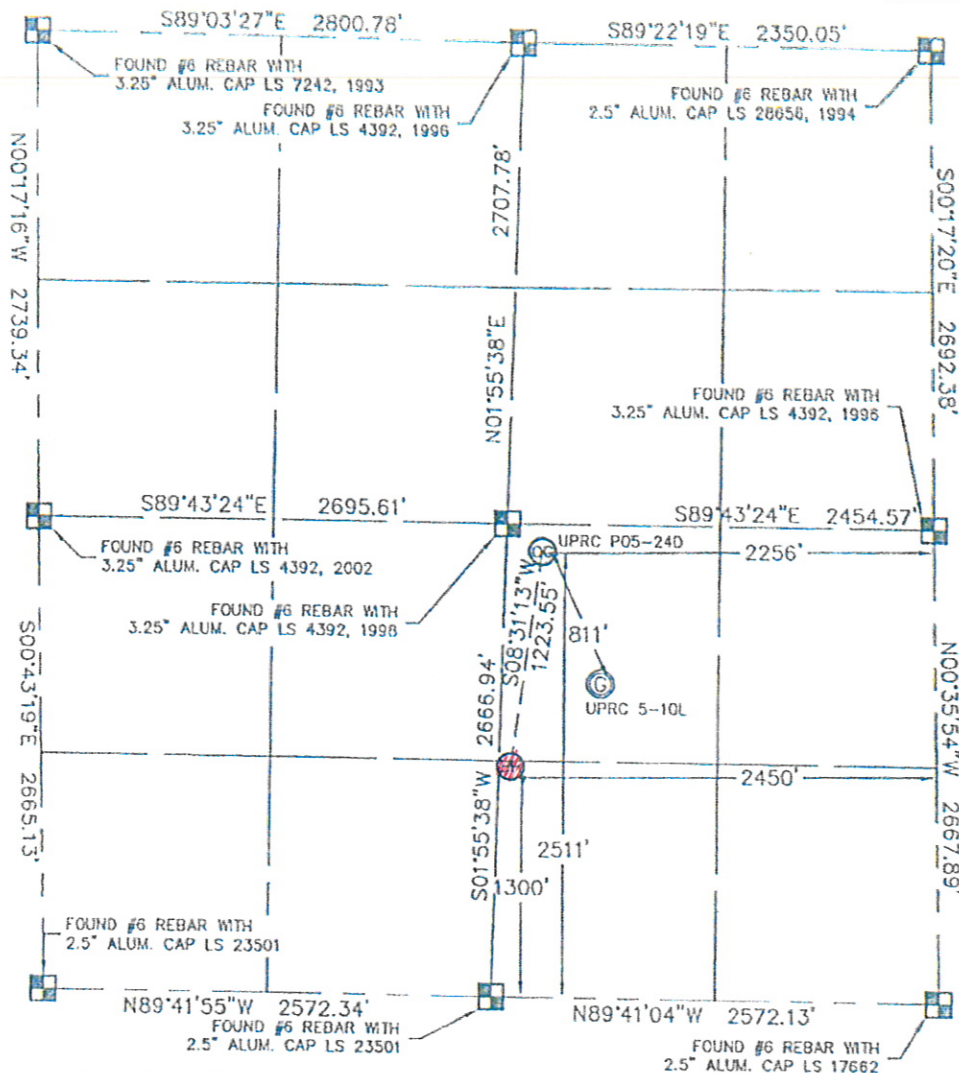


KING SURVEYORS, INC. 650 E. GARDEN DR. WINDSOR, CO 80550

WELL LOCATION CERTIFICATE

THIS MAP DOES NOT REPRESENT A BOUNDARY SURVEY

SECTION: 5
TOWNSHIP: 3N
RANGE: 67W



In accordance with a request from Joe Martin with Noble Energy Inc. King Surveyors Inc. has determined the surface location of the UPRC P05-240 to be 2511' from the SOUTH line and 2256' from the EAST line and the bottom hole to be 1300' from the SOUTH line and 2450' from the EAST line as measured at right angles from the section line of Section 5, Township 3 North, Range 67 West of the Sixth Principal Meridian, County of Weld, State of Colorado. I hereby state that this Well Location Certificate was prepared by me, or under my direct supervision, that the fieldwork was completed on 8-27-09, for and on behalf of Noble Energy Inc. That this is not a Land Survey Plat or an Improvement Survey Plat, and that it is not to be relied upon for establishment of fence, building, or other future improvement lines.

NOTE:

- 1) Bearings shown are Grid Bearings of the Colorado State Plane Coordinate System, North Zone, North American Datum 1983/2007. The lineal dimensions as contained herein are based upon the "U.S. Survey Foot."
- 2) Ground elevations are based on an observed GPS elevation (NAD83 1988 DATUM).
- 3) NEAREST EXISTING WELL: UPRC 5-10L 811' SOUTHEAST
- 4) IMPROVEMENTS: See VISIBLE IMPROVEMENTS exhibit for all visible improvements within 400' of well head.
- 5) SURFACE USE: CROP FIELD

NOTE

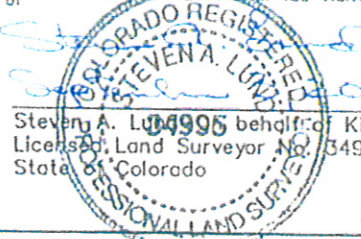
According to Colorado law, you must commence any legal action based upon any defect in this W.L.C. within three years after you discover such defect. In no event, may any action based upon any defect in this survey be commenced more than ten years after the date of the certificate shown hereon. (13-80-105 C.R.S.)

LEGEND

- = ALIQUOT MONUMENT AS DESCRIBED
- = CALCULATED POSITION

SURFACE LOCATION
LATITUDE: 40.25456°N
LONGITUDE: 104.91296°W
POOP: 2.1
ELEV: 4875
1/4, 1/4: NW1/4SE1/4
NEAREST PROPERTY LINE: 155' NORTH

BOTTOM HOLE
LATITUDE: 40.25125°N
LONGITUDE: 104.91364°W

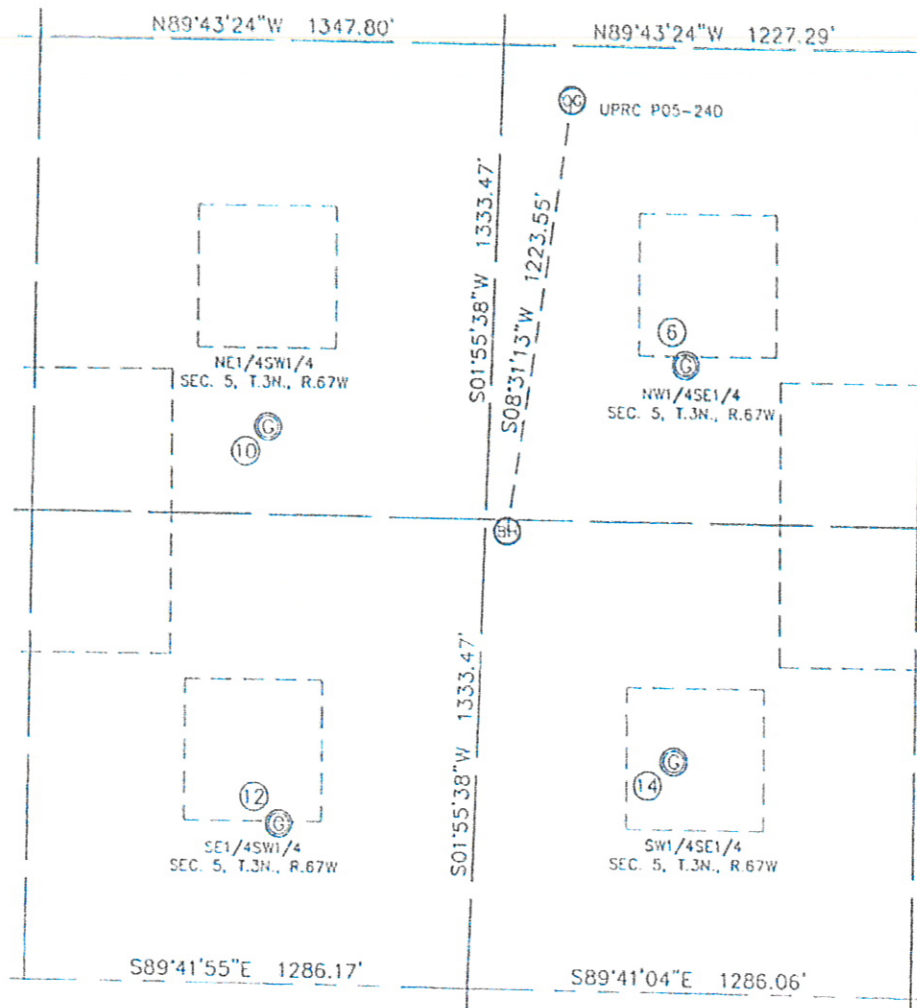


Steven A. Lundberg 34995 behalf of King Surveyors, Inc.
Licensed Land Surveyor No. 34995
State of Colorado

PROJECT#: 2009289

KING SURVEYORS, INC. 650 E. GARDEN DR. WINDSOR, CO 80550
 SITE SKETCH

SECTION: 5
 TOWNSHIP: 3N
 RANGE: 67W



⑥
 UPRC 5-10L
 NW1/4SE1/4
 1774' FSL
 1929' FEL
 LAT-40.25253°N
 LONG-104.91178°W
 PDOP: 1.9
 ELEV: 4862

⑩
 HSR-SCHELL 11-15
 NE1/4SW1/4
 1576' FSL
 1999' FWL
 LAT-40.25203°N
 LONG-104.91615°W
 PDOP: 1.5
 ELEV: 4858

⑫
 HSR-SCHELL 14-5
 SE1/4SW1/4
 460' FSL
 2025' FWL
 LAT-40.24896°N
 LONG-104.91603°W
 PDOP: 1.3
 ELEV: 4840

⑭
 UPRC 5-15L
 SW1/4SE1/4
 659' FSL
 1969' FEL
 LAT-40.24947°N
 LONG-104.91191°W
 PDOP: 1.4
 ELEV: 4848

