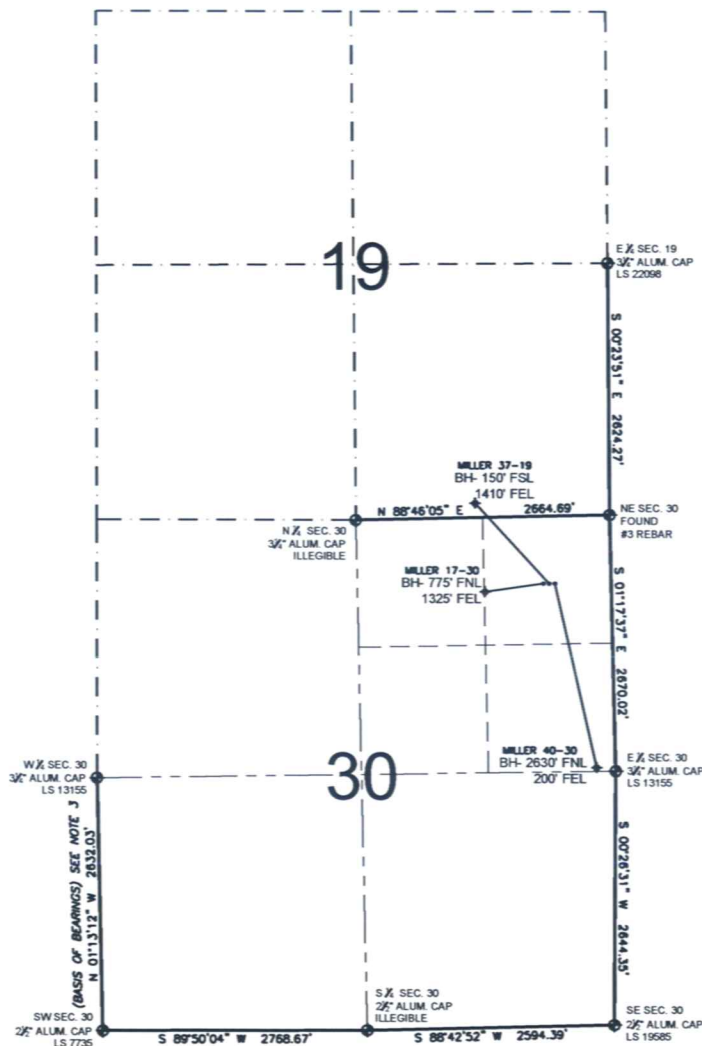


PAD DRAWING - MILLER 3 PAD

SECTION 30, TOWNSHIP 3 NORTH, RANGE 66 WEST, 6TH P.M.



LEGEND

- = EXISTING MONUMENT
 = BOTTOM HOLE
 BH= BOTTOM HOLE
 = PROPOSED WELL
 = EXISTING WELL

NOTES:

- THIS SURVEY WAS DONE BY GPS METHODS AND CONFORMS TO THE MINIMUM STANDARDS SET BY THE C.O.G.C.C., RULE NO. 215
- ELEVATIONS SHOWN AT THE WELL HEAD, AS WELL AS HORIZONTAL CONTROL, ARE BASED ON GPS-RTK VALUES DERIVED FROM DOING 2-HOUR STATIC GPS SESSIONS AND REDUCTIONS USING O.P.U.S. SOLUTIONS.
VERTICAL = NAVD88; HORIZONTAL = NAD83/92
- THE BEARINGS SHOWN HEREON ARE BASED ON GPS OBSERVATIONS BETWEEN THE MONUMENTS SHOWN HEREON AS FOUND ON THE FIELD DATE BELOW.
- DISTANCES SHOWN ARE AT GROUND LEVEL, AS MEASURED IN THE FIELD, WITH TIES TO WELLS MEASURED AT A PERPENDICULAR TO SECTION LINES.

NOTES:

- MILLER 40-30 TO BE AT 703' FNL, 633' FEL.
 BOTTOM HOLE AT 2630' FNL & 200' FEL.
 MILLER 37-19 TO BE AT 703' FNL, 649' FEL.
 BOTTOM HOLE AT 150' FSL & 1410' FEL.
 MILLER 17-30 TO BE AT 703' FNL, 665' FEL.
 BOTTOM HOLE AT 775' FNL & 1325' FEL.



0 500 1000
SCALE: 1"=1000'

REVISIONS		PREPARED BY: PFS Petroleum Field Services, LLC 1801 W. 13th Ave. Denver, CO 80204
INITIAL	DATE	

KERR-MCGEE OIL & GAS ONSHORE LP

FIELD DATE:
12-15-09

DRAWING DATE:
12-23-09

BY:
SMF

PAD NAME:
MILLER 3 PAD

SURFACE LOCATION:

WELD COUNTY, COLORADO
NE 1/4 NE 1/4, SEC. 30, T3N, R66W