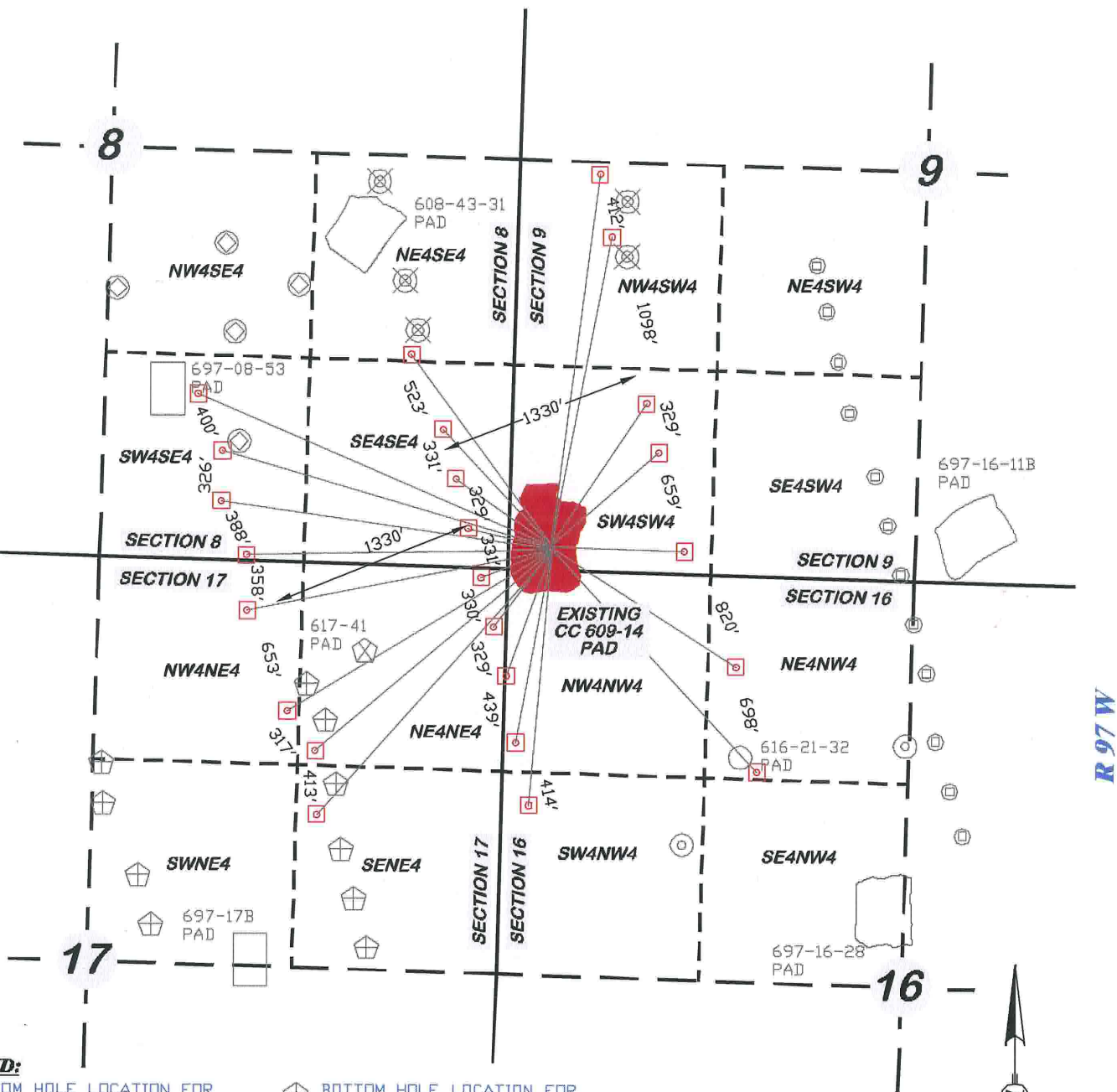


T 6 S

GARFIELD COUNTY

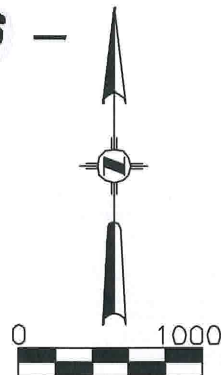


R 97 W

LEGEND:

- ⊗ BOTTOM HOLE LOCATION FOR 697-08-53 PAD
- ⊙ BOTTOM HOLE LOCATION FOR 697-16-11B PAD
- ⊗ BOTTOM HOLE LOCATION FOR 608-43-31 PAD
- ⊙ PROPOSED BOTTOM HOLE LOCATION FOR CC 609-14 PAD
- ⊗ BOTTOM HOLE LOCATION FOR 697-17B PAD
- ⊗ BOTTOM HOLE LOCATION FOR 617-41 PAD
- ⊙ BOTTOM HOLE LOCATION FOR 616-21-32 PAD
- ⊙ BOTTOM HOLE LOCATION FOR 697-16-28 PAD

CC 609-14 PAD



RIFFIN & ASSOCIATES, INC.
1414 ELK ST., ROCK SPRINGS, WY 82901

(307) 362-5028

DRAWN: 1/11/10 - DEH

REVISED: N/A

SCALE: 1" = 1000'

DRG JOB No. 10841

EXHIBIT 7

MULTI-WELL PLAN

OXY USA WTP LP
CASCADE CREEK 697-09-33A, 33B, 50A, 50B, 58, 697-08-56A, 56B, 64A, 54A, 54B, 64B, 62A, 62B, 697-16-02B, 11B, 01, 09A, 09B, 697-17-08A, 06A, 08B, 14, 15, & 23A

SW1/4 OF SW1/4 SECTION 9, T. 6 S., R. 97 W., 6th P.M.,
GARFIELD COUNTY, COLORADO