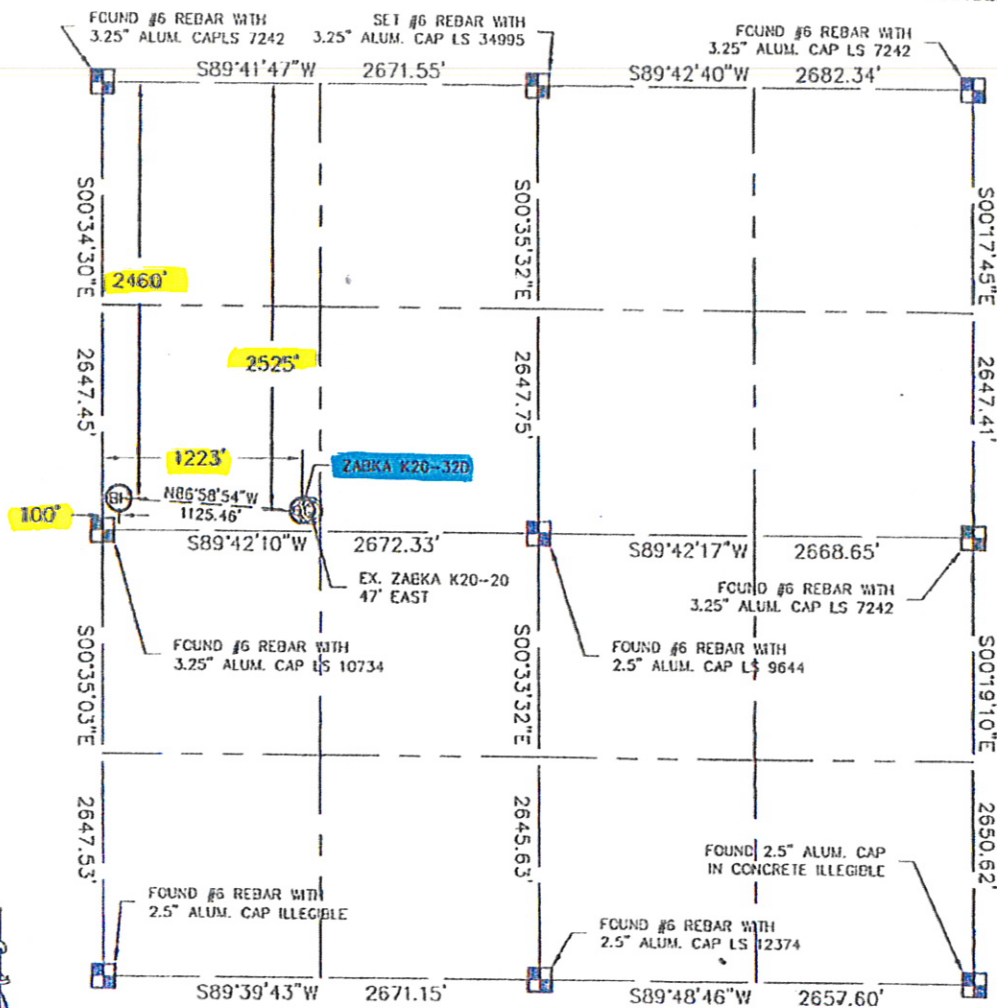


KING SURVEYORS, INC. 650 GARDEN DR. WINDSOR, CO 80550

WELL LOCATION CERTIFICATE

THIS MAP DOES NOT REPRESENT A BOUNDARY SURVEY

SECTION: 20
TOWNSHIP: 4N
RANGE: 66W



In accordance with a request from Joe Morlin with Noble Energy Inc., King Surveyors Inc. has determined the surface location of the ZABKA K20-320 to be 2525' from the NORTH line and 1223' from the WEST line and the bottom hole to be 2460' from the NORTH line and 100' from the WEST line as measured at right angles from the section line of Section 20, Township 4 North, Range 66 West of the Sixth Principal Meridian, County of Weld, State of Colorado.

I hereby state that this Well Location Certificate was prepared by me, or under my direct supervision, that the fieldwork was completed on 8-03-09, for and on behalf of Noble Energy Inc. That this is not a Land Survey Plat or an Improvement Survey Plat, and that it is not to be relied upon for establishment of fence, building, or other future improvement lines.

NOTE:

- 1) Bearings shown are Grid Bearings of the Colorado State Plane Coordinate System, North Zone, North American Datum 1983/92.
- 2) Ground elevations are based on an observed GPS elevation (NAVD 1988 DATUM).
- 3) NEAREST EXISTING WELL: ZABKA K20-20, 47' EAST
- 4) IMPROVEMENTS: See VISIBLE IMPROVEMENTS exhibit for all visible improvements within 400' of well head.
- 5) SURFACE USE: CROP FIELD

SURFACE LOCATION
LATITUDE: 40.29748N
LONGITUDE: 104.80664W
POOP: 1.3
ELEV: 4746
1/4, 1/4: SW1/4NW1/4
NEAREST PROPERTY LINE: 122' SOUTH

BOTTOM HOLE
LATITUDE: 40.29767N
LONGITUDE: 104.81067W

NOTE

According to Colorado law, you must commence any legal action based upon any defect in this W.L.C. within three years after you discover such defect. In no event, may any action based upon any defect in this survey be commenced more than ten years after the date of the certificate shown hereon. (13-80-105 C.R.S.)

LEGEND

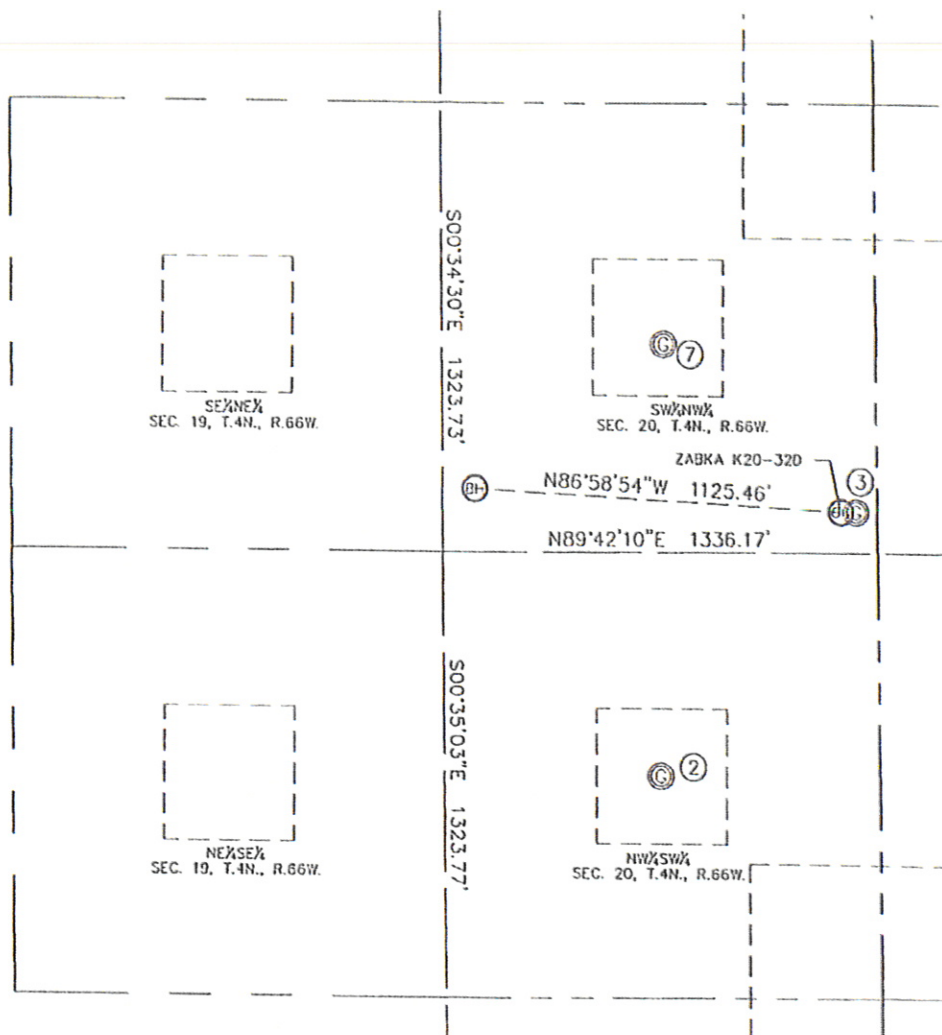
- = ALIQUOT MONUMENT AS DESCRIBED
- = CALCULATED POSITION

Steven A. Lund, On Behalf of King Surveyors, Inc.
Licensed Land Surveyor, No. 34995
State of Colorado

PROJECT: 2008041

KING SURVEYORS, INC. 650 GARDEN DR. WINDSOR, CO 80550
 SITE SKETCH

SECTION: 20
 TOWNSHIP: 4N
 RANGE: 66W



②
 WETCO K 20-12
 NW $\frac{1}{4}$ SW $\frac{1}{4}$
 1987' FSL
 655' FWL
 LAT--40.29534°N
 LONG--104.80264°W
 PDOP: 1.3
 ELEV: 4750

③
 ZABKA K 20-20
 SW $\frac{1}{4}$ NW $\frac{1}{4}$
 2523' FNL
 1270' FWL
 LAT--40.29748°N
 LONG--104.80647°W
 PDOP: 1.7
 ELEV: 4746

⑦
 KERBS R K 20-5
 SW $\frac{1}{4}$ NW $\frac{1}{4}$
 2036' FNL
 684' FWL
 LAT--40.29883°N
 LONG--104.80858°W
 PDOP: 1.7
 ELEV: 4750

