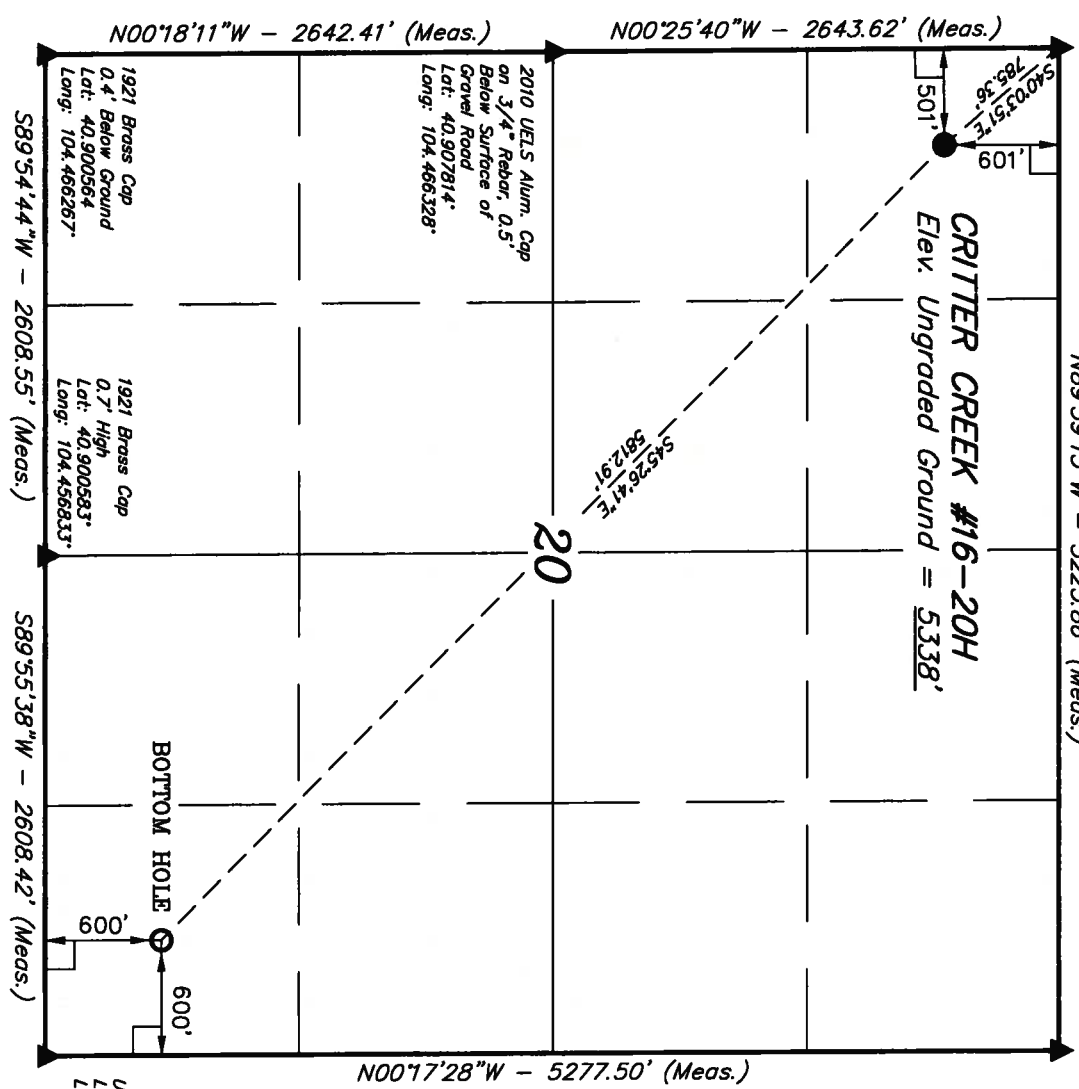


T11N, R63W, 6th P.M.

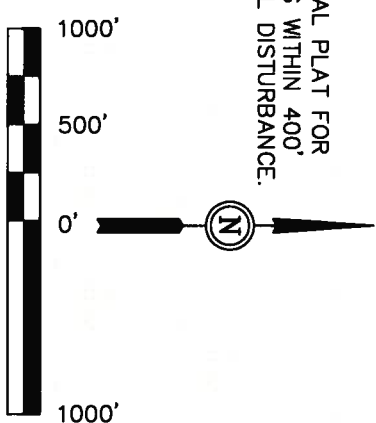
U.S. Alum. Cap
Lat: 40.915069
Long: 104.466408

N89°59'13"W - 5223.86' (Meas.)

U.S. Alum. Cap
0.5' Below Road
Lat: 40.915078
Long: 104.447514



NOTE:
SEE ADDENDUM TO LEGAL PLAT FOR
EXISTING IMPROVEMENTS WITHIN 400'
OF THE PROPOSED WELL DISTURBANCE.



CERTIFICATE

THIS IS TO CERTIFY THAT THE ABOVE PLAT WAS PREPARED FROM
FIELD NOTES OF ACTUAL SURVEYS MADE BY ME OR UNDER MY
SUPERVISION AND THAT THE SAME ARE TRUE AND CORRECT TO THE
BEST OF MY KNOWLEDGE AND BELIEF.

REGISTERED LAND SURVEYOR
REGISTRATION NO. 1492
STATE OF COLORADO

LEGEND:

- = 90° SYMBOL
- = PROPOSED WELL HEAD.
- ▲ = SECTION CORNERS LOCATED.

NAD 83 (TARGET BOTTOM HOLE)	NAD 83 (SURFACE LOCATION)	PDOP = 4.6
LATITUDE = 40°54'08.07" (40.902242)	LATITUDE = 40°54'48.32" (40.913422)	
LONGITUDE = 104°26'58.50" (104.449583)	LONGITUDE = 104°27'52.48" (104.464578)	
NAD 27 (TARGET BOTTOM HOLE)	NAD 27 (SURFACE LOCATION)	
LATITUDE = 40°54'08.13" (40.902258)	LATITUDE = 40°54'48.38" (40.913439)	
LONGITUDE = 104°26'56.65" (104.449089)	LONGITUDE = 104°27'50.63" (104.464064)	
STATE PLANE NAD 83 (COLORADO NORTH)	STATE PLANE NAD 83 (COLORADO NORTH)	
N: 1573257.757	N: 1577282.384	
E: 3290377.630	E: 3286185.184	
STATE PLANE NAD 27 (COLORADO NORTH)	STATE PLANE NAD 27 (COLORADO NORTH)	
N: 573255.899	N: 577280.459	
E: 2290527.048	E: 2286334.647	

UNTAH ENGINEERING & LAND SURVEYING

85 SOUTH 200 EAST - VERNAL, UTAH 84078

(435) 789-1017

SCALE	DATE SURVEYED:	DATE DRAWN:
1" = 1000'	01-28-10	02-08-10
PARTY	REFERENCES	
B.H. J.M. D.P.	G.L.O. PLAT	
WEATHER	FILE	
COLD	EOG RESOURCES, INC.	

EOG RESOURCES, INC.

Well location, CRITTER CREEK #16-20H, located as shown in the NW 1/4 NW 1/4 of Section 20, T11N, R63W, 6th P.M., Weld County, Colorado.

BASIS OF ELEVATION

SPOT ELEVATION AT THE NORTHEAST CORNER OF SECTION 1, T11N, R63W, 6th P.M. TAKEN FROM THE HEREFORD, QUADRANGLE, COLORADO, WELD COUNTY, 7.5 MINUTE QUAD (TOPOGRAPHIC MAP) PUBLISHED BY THE UNITED STATES DEPARTMENT OF THE INTERIOR, GEOLOGICAL SURVEY. SAID ELEVATION IS MARKED AS BEING 5352 FEET.

BASIS OF BEARINGS

BASIS OF BEARINGS IS A G.P.S. OBSERVATION.