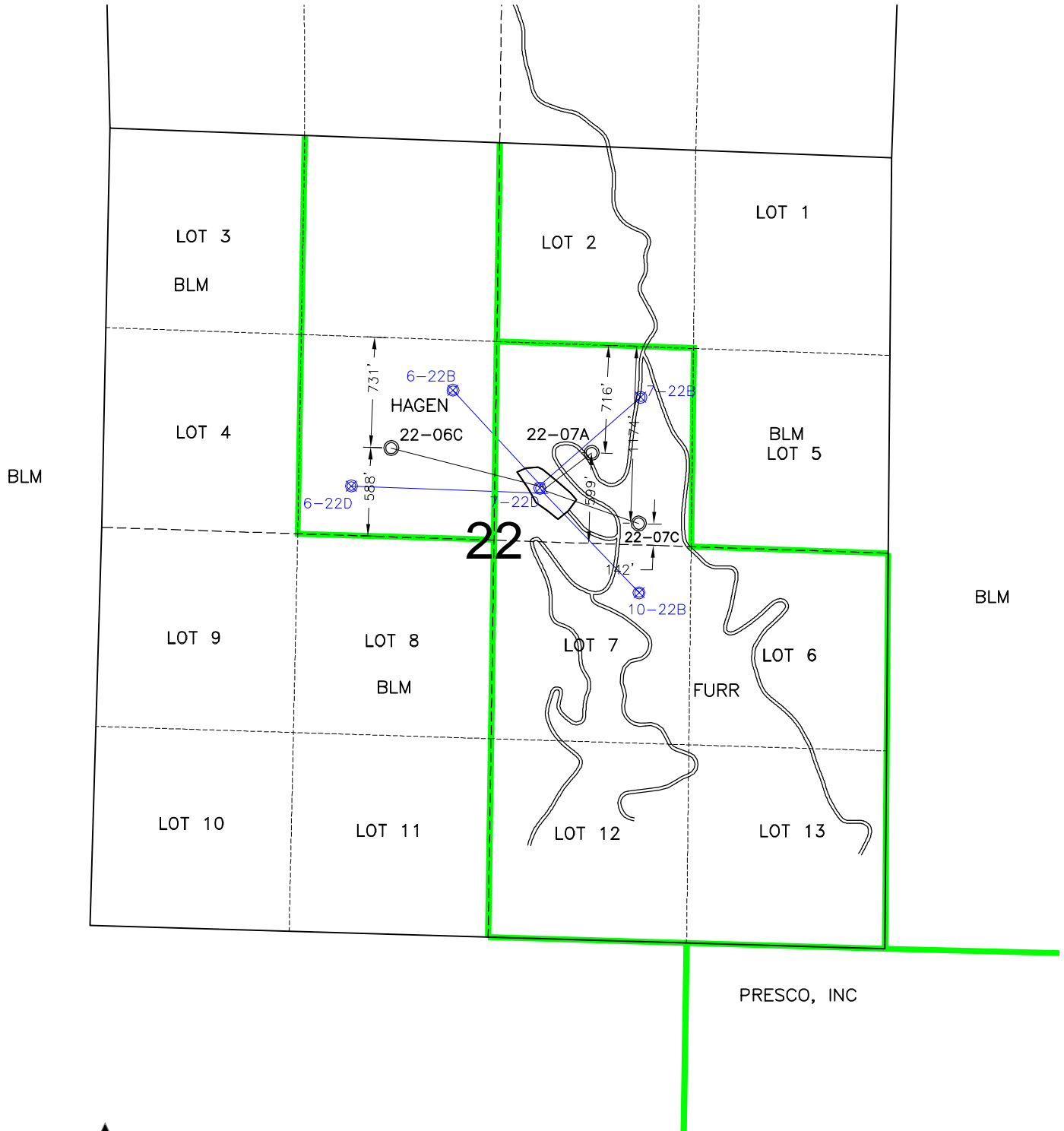


MULTI-WELL PLAN

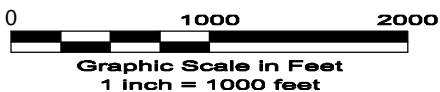


— PROPERTY LINE

○ PROPOSED BOTTOM HOLE LOCATION

⊗ EXISTING BOTTOM HOLE

3/11/10



GEO SURV

LAND SURVEYING AND MAPPING
LAFAYETTE - WINTER PARK
Ph 303 666 0379 Fx 303 665 6320

LARAMIE ENERGY II LLC
FURR 22-07 (F-1) PAD

SW1/4 NE1/4 SEC. 22 T7S R95W
6th PM GARFIELD COUNTY COLORADO