

DALEY LAND SURVEYING, INC.

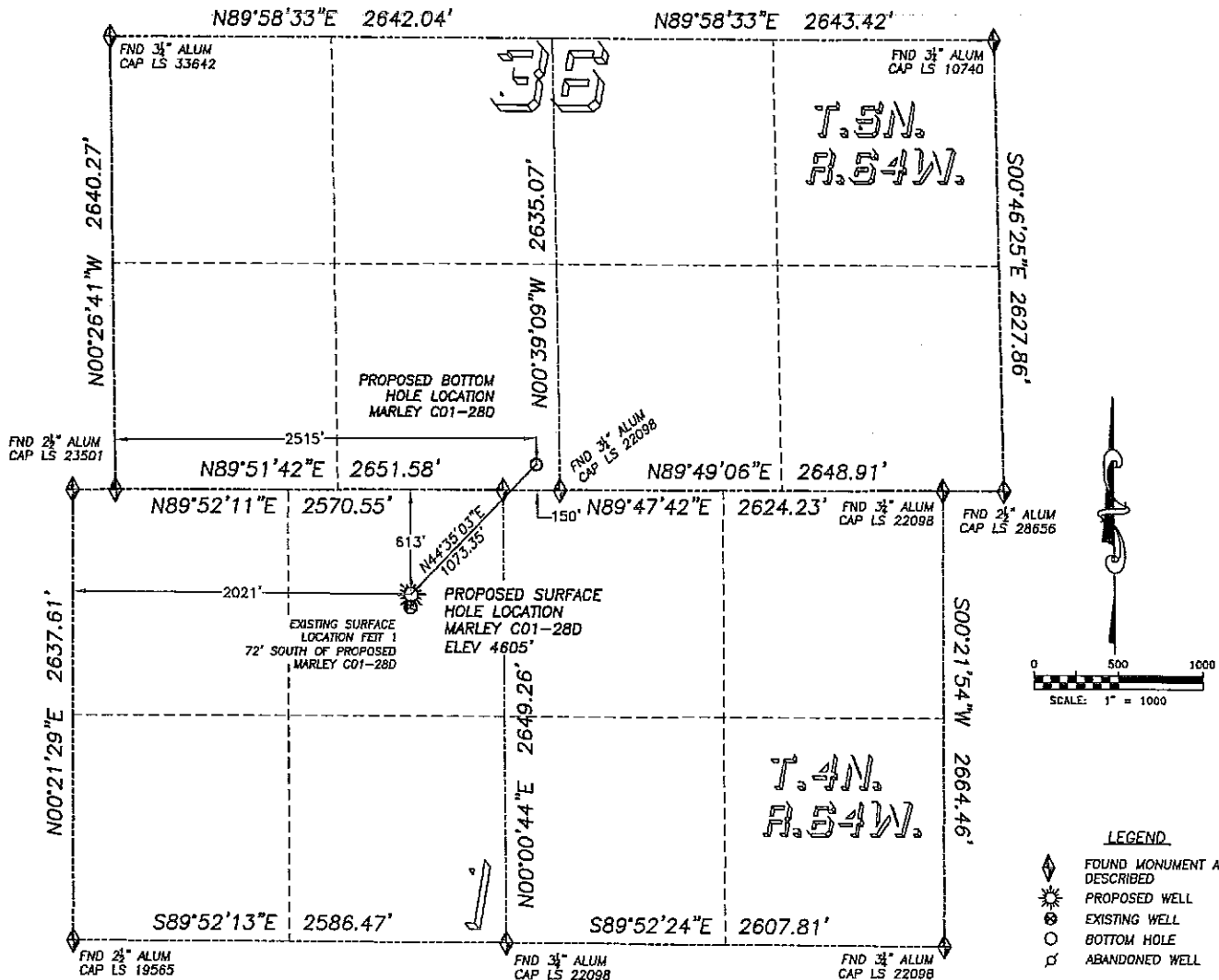
PARKER, CO. 80134

303 953 9841

WELL LOCATION CERTIFICATE

MARLEY C01-28D

SECTION 1, TOWNSHIP 4 NORTH, RANGE 64 WEST OF THE 6TH PRINCIPAL MERIDIAN

**NAD 83 LATITUDE AND LONGITUDE****MARLEY C01-28D SURFACE HOLE:**

LATITUDE: N40.34698°
 LONGITUDE: W104.50090°
 ELEVATION: 4605'
 PDOP 2.4
 613' FNL, 2021' FWL

BOTTOM HOLE:

LATITUDE: N40.34908°
 LONGITUDE: W104.49819°
 150' FSL, 2515' FWL, S36, T5N, R64W

NEAREST EXISTING WELL:

FEET 1 SURFACE HOLE
 LATITUDE: N40.34678°
 LONGITUDE: W104.50091°
 ELEVATION: 4604'
 72' SOUTH

QUARTER/QUARTER: NE4/NW4, GOV'T LOT 3**NEAREST APPARENT PROPERTY LINE:**

553'± EAST

IN ACCORDANCE WITH A REQUEST FROM BILL BETSON OF NOBLE ENERGY INC., DALEY LAND SURVEYING, INC. HAS DETERMINED THE SURFACE LOCATION OF THE MARLEY C01-28D WELL TO BE 613' FNL, 2021' FWL, AS MEASURED AT NINETY (90) DEGREES FROM THE SECTION LINES OF SECTION 1, TOWNSHIP 4 NORTH, RANGE 64 WEST OF THE 6TH PRINCIPAL MERIDIAN, WELD COUNTY COLORADO.

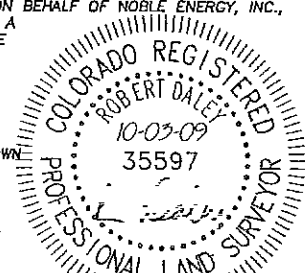
THE BOTTOM HOLE LOCATION PROVIDED BY THE CLIENT IS TO BE 150' FSL, 2515' FWL OF SEC. 36, T.5N, R.64W.

I HEREBY CERTIFY THAT THIS WELL LOCATION CERTIFICATE WAS PREPARED BY ME OR UNDER MY DIRECT SUPERVISION, THAT THE WORK WAS COMPLETED ON 10/01/2009 FOR AND ON BEHALF OF NOBLE ENERGY, INC., AND THAT THIS MAP DOES NOT REPRESENT A BOUNDARY SURVEY, IT IS NOT A LAND SURVEY PLAT OR AN IMPROVEMENT SURVEY PLAT AND IT IS NOT TO BE RELIED UPON FOR THE ESTABLISHMENT OF FENCE, BUILDING OR OTHER FUTURE IMPROVEMENT LINES.

NOTES:

- 1) BASIS OF BEARINGS FOR THIS MAP ARE ASSUMED AND BASED UPON GPS OBSERVATIONS MADE BETWEEN MONUMENTS LOCATED AT THE NORTHWEST AND NORTH QUARTER CORNER OF SECTION 1, T.4N., R.64W., AND ALL BEARINGS SHOWN HEREON ARE RELATIVE THERETO.
- 2) HORIZONTAL DATUM IS NAD83.
- 3) VERTICAL DATUM IS NAVD88, ELEVATIONS ARE DERIVED FROM GPS-RTK OBSERVATIONS PROCESSED THROUGH OPUS, UTILIZING THE GEIOD03 MODEL.
- 4) SEE VISIBLE IMPROVEMENTS EXHIBIT FOR VISIBLE IMPROVEMENTS WITHIN 400' OF PROPOSED SURFACE HOLE LOCATION
- 5) SURFACE USE: OPEN FIELD

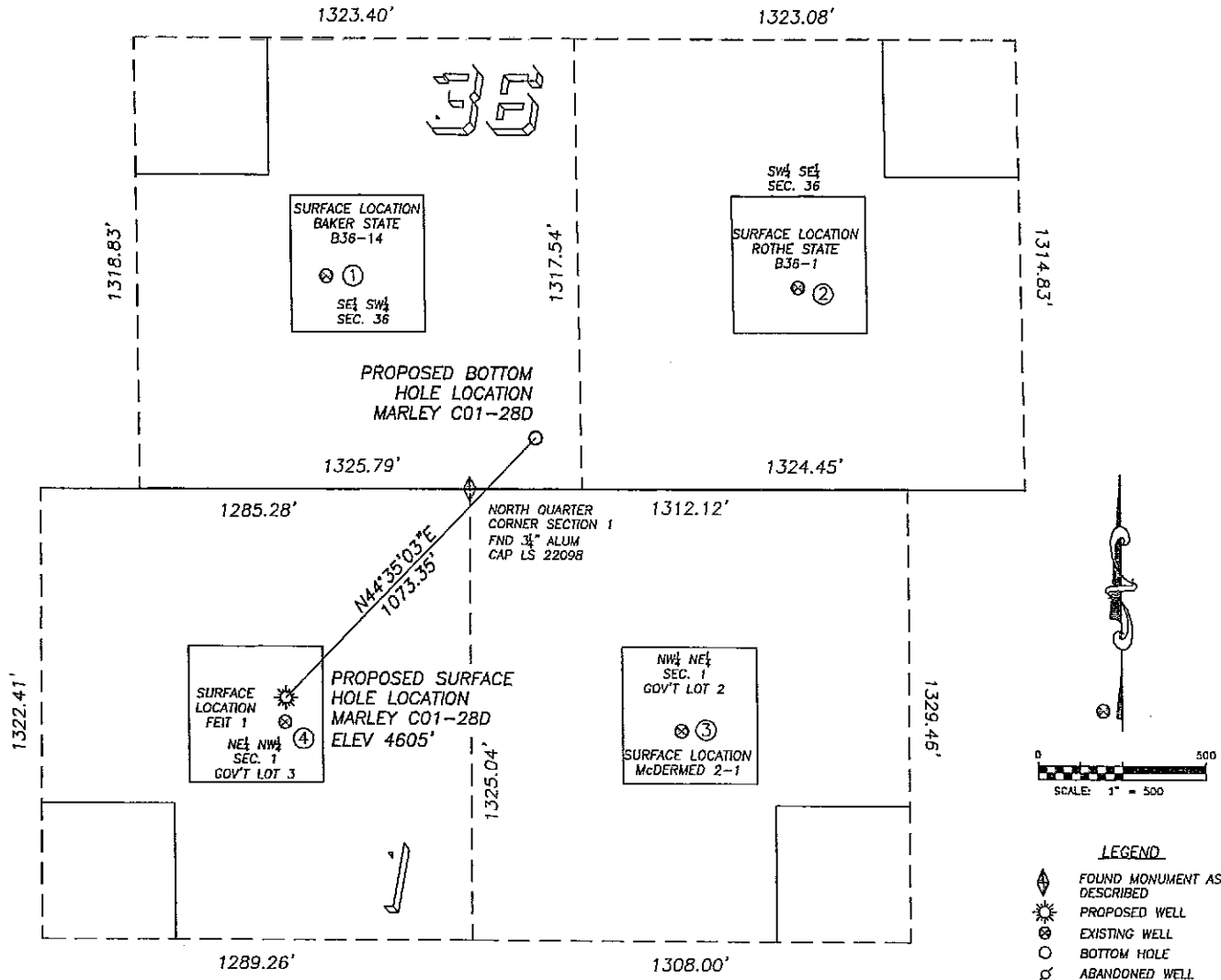
NOTICE: According to Colorado law you MUST commence any legal action based upon any defect in this W.L.C. within three years after you first discover such defect. In no event may any action based upon any such defect in this W.L.C. be commenced more than ten years from the date of the certification shown hereon.



FOR AND ON BEHALF OF
 DALEY LAND SURVEYING INC.,
 Robert Daley, PLS 35597

SITE SKETCH MARLEY C01-28D

SECTION 1, TOWNSHIP 4 NORTH, RANGE 64 WEST OF THE 6TH PRINCIPAL MERIDIAN



0 500
SCALE: 1" = 500'

LEGEND
 ▲ FOUND MONUMENT AS DESCRIBED
 ☼ PROPOSED WELL
 ⊗ EXISTING WELL
 ○ BOTTOM HOLE
 ◊ ABANDONED WELL

① **BAKER STATE B36-14**
 SE/SW SEC. 36, 5N-64W
 623' FSL, 1892' FWL
 784' NW OF PROPOSED
 BOTTOM HOLE LOCATION
 LAT. N40.35037°
 LONG. W104.50044°
 EL: 4603'
 PDOP 1.5

② **ROTHE STATE B36-15**
 SW/SE SEC. 36, 5N-64W
 591' FSL, 1991' FEL
 904' NE OF PROPOSED
 BOTTOM HOLE LOCATION
 LAT. N40.35029°
 LONG. W104.49537°
 EL: 4597'
 PDOP 1.5

③ **McDERMED 2-1**
 NW/NE SEC. 1
 (GOV'T LOT 2)
 709' FNL, 1989' FEL
 980' SE OF PROPOSED
 BOTTOM HOLE LOCATION
 LAT. N40.34672°
 LONG. W104.49665°
 EL: 4602'
 PDOP 3.0

④ **FEIT 1**
 NE/NW SEC. 1
 (GOV'T LOT 3)
 685' FNL, 2018' FWL
 1128' SW OF PROPOSED
 BOTTOM HOLE LOCATION
 LAT. N40.34678°
 LONG. W104.50091°
 EL: 4604'
 PDOP 1.8

NOTES:

- THIS DOES NOT REPRESENT A BOUNDARY SURVEY
- THE LATITUDES AND LONGITUDES SHOWN ARE REFERENCED TO NAD83
- DATUM FOR ELEVATION IS NAVD83. ELEVATIONS ARE DERIVED FROM GPS-RTK OBSERVATIONS PROCESSED THROUGH OPUS, UTILIZING THE GEOID03 MODEL.

