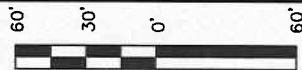


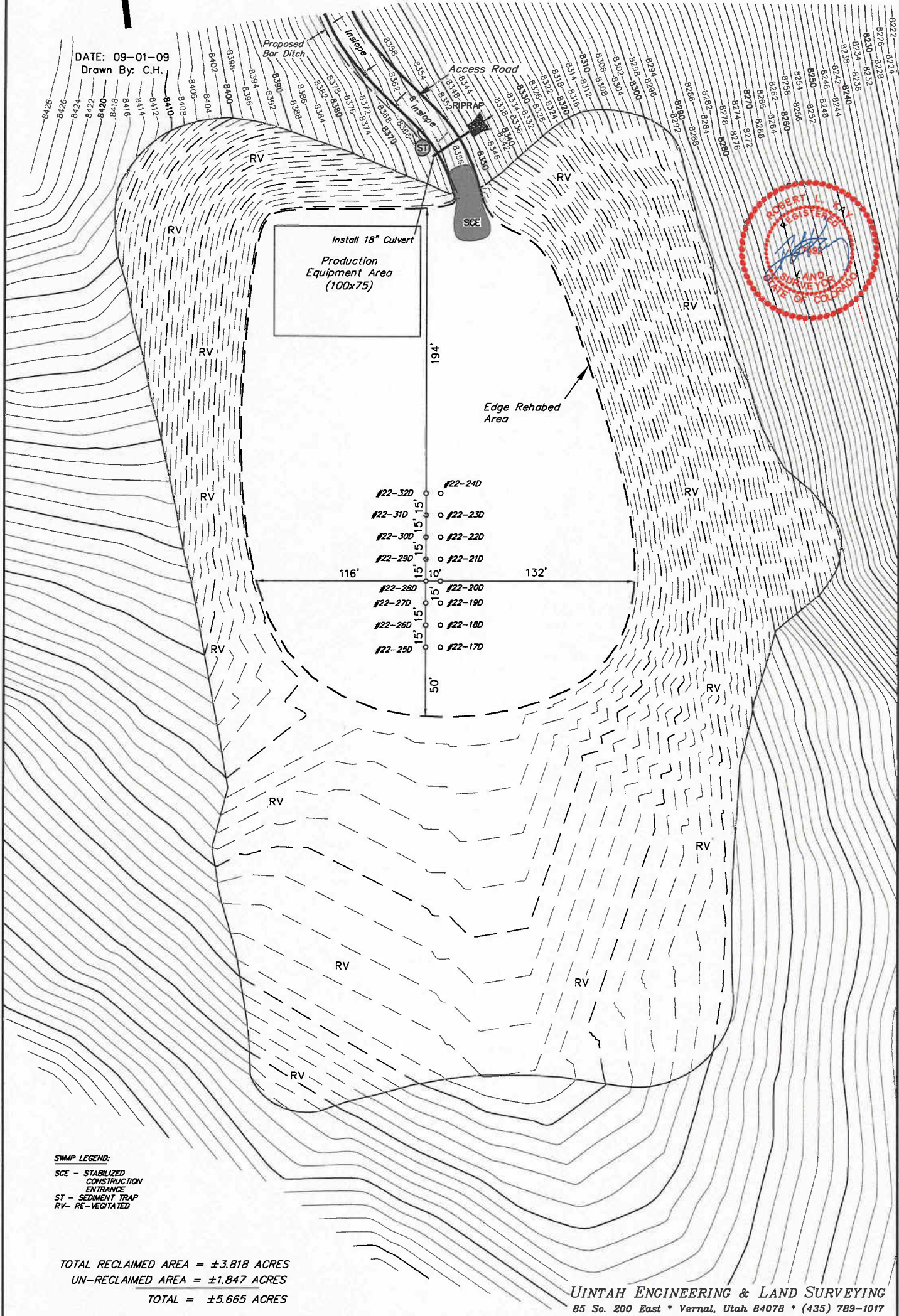
BERRY PETROLEUM COMPANY
RECLAMATION PAD & PROD. EQUIPMENT LAYOUT

WELL PAD E22 697
 SECTION 22, T6S, R97W, 6th P.M.
 SW 1/4 NW 1/4



Sheet 7 of 12

DATE: 09-01-09
 Drawn By: C.H.



SWMP LEGEND:
 SCE - STABILIZED CONSTRUCTION ENTRANCE
 ST - SEDIMENT TRAP
 RV - RE-VEGETATED

TOTAL RECLAIMED AREA = ±3.818 ACRES
 UN-RECLAIMED AREA = ±1.847 ACRES
 TOTAL = ±5.665 ACRES

UINTAH ENGINEERING & LAND SURVEYING
 85 So. 200 East • Vernal, Utah 84078 • (435) 789-1017