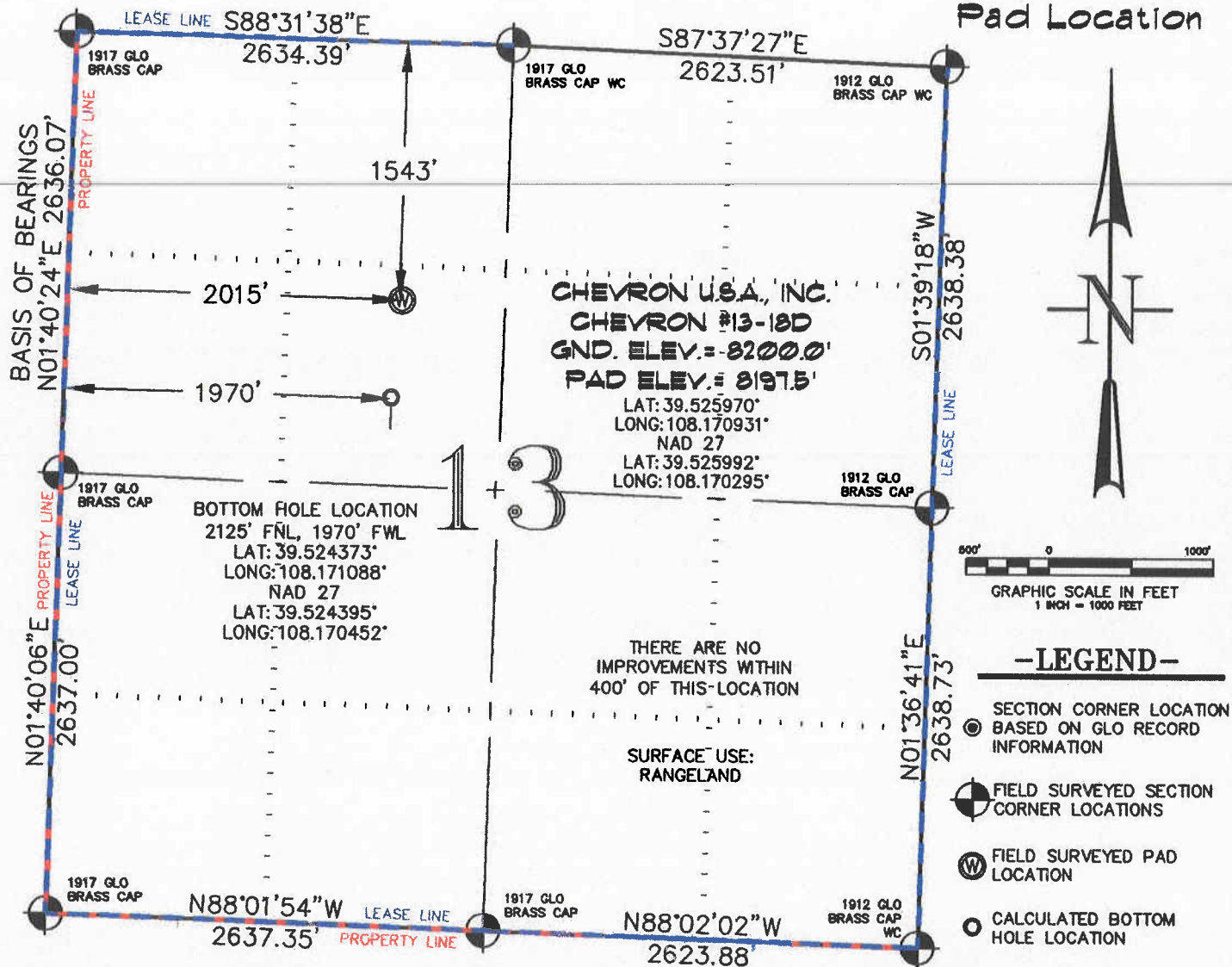


SEC. 13, T. 6 S., R. 97 W. OF THE 6TH P.M. Chevron F13-697  
Pad Location



**THIS WELL LOCATION PLAT WAS PREPARED FOR BERRY PETROLEUM COMPANY, TO LOCATE THE CHEVRON #13-18D WELL, 1543 FEET FROM THE NORTH LINE AND 2015 FEET FROM THE WEST LINE IN THE SE 1/4 NW 1/4 SECTION 13, T. 6 S., R. 97 W. OF THE 6TH P.M. GARFIELD COUNTY, COLORADO.**

**REFERENCE NOTES**

- 1) T. 6 S., R. 97 W., 6TH P.M. GLO PLAT.
- 2) U.S.G.S. QUAD: CIRLCE DOT GULCH, CO
- 3) ELEVATIONS BASED ON N.A.V.D. 1988
- 4) LATITUDES AND LONGITUDES ARE BASED ON NAD 83, COLORADO CENTRAL ZONE.
- 5) GPS OPERATOR ROBERT WOOD, OBSERVED A PDOP OF 3.3.
- 6) ALL GPS OBSERVATIONS ARE IN COMPLIANCE WITH COGCC RULE NO. 215.
- 7) SURFACE AND BOTTOM HOLE LOCATIONS ARE MEASURED 90° FROM SECTION LINES.

**SURVEYOR'S CERTIFICATE**

I, George R. Bauer: a Professional Land Surveyor in the State of Colorado do hereby certify that this Survey was made under my direct supervision, and that this Plat represents said Survey.



COLORADO P.L.S. 27925



**CONSTRUCTION SURVEYS, INC.**  
0012 SUNRISE BLVD.  
SILT, CO 81652  
(970)876-5753

VIEW: 1B

SURVEYED: 09/06/07	SCALE: 1" = 1000'
DRAFTED: 01/28/10	DWG: BERRY\CHEV_F13-697
CHECKED: 01/29/10	SHEET: 1 of 11