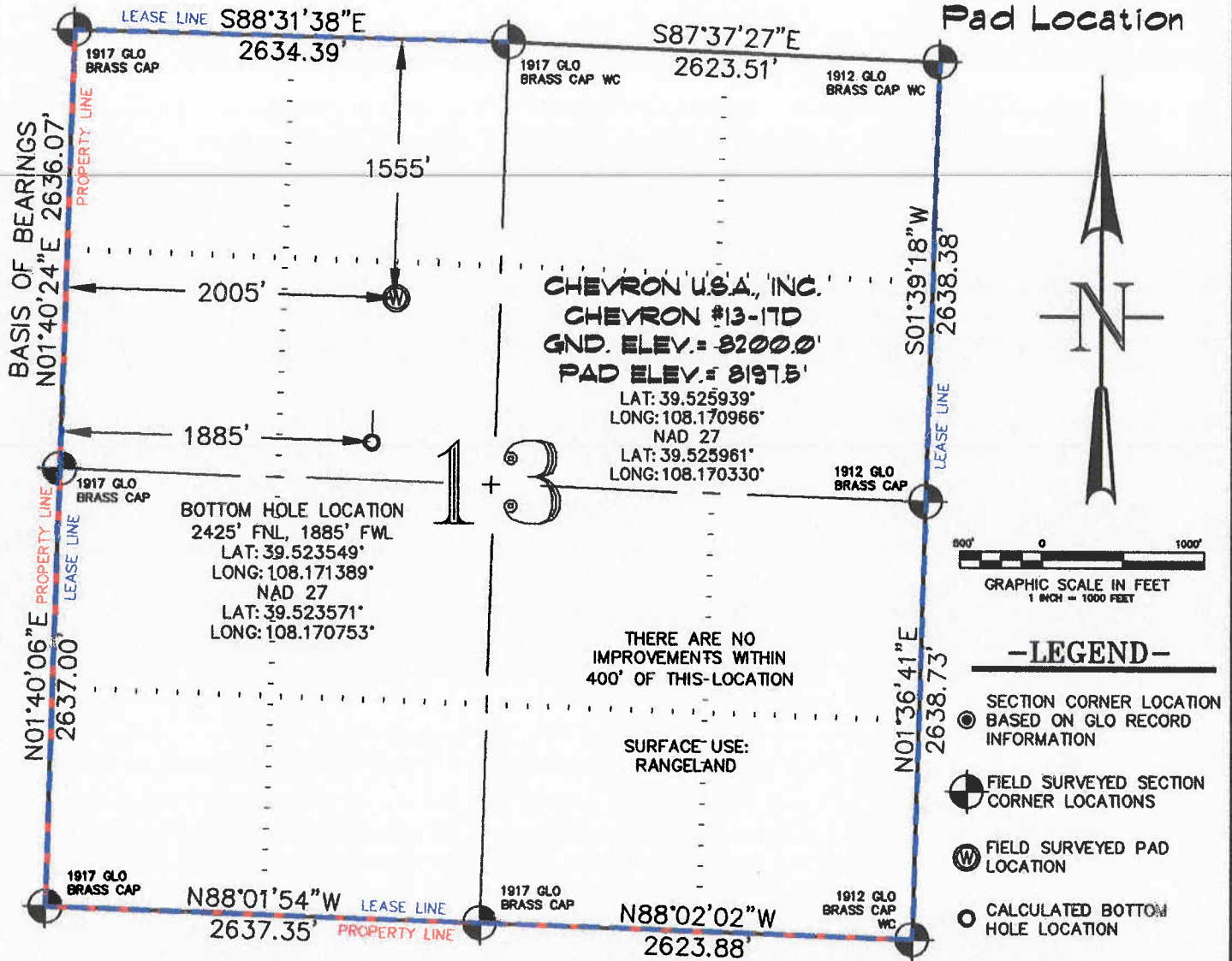


SEC. 13, T. 6 S., R. 97 W. OF THE 6TH P.M.

Chevron F13-697  
Pad Location



THIS WELL LOCATION PLAT WAS PREPARED FOR BERRY PETROLEUM COMPANY, TO LOCATE THE CHEVRON #13-17D WELL, 1555 FEET FROM THE NORTH LINE AND 2005 FEET FROM THE WEST LINE IN THE SE 1/4 NW 1/4 SECTION 13, T. 6 S., R. 97 W. OF THE 6TH P.M. GARFIELD COUNTY, COLORADO.

#### REFERENCE NOTES

- 1) T. 6 S., R. 97 W., 6TH P.M. GLO PLAT.
- 2) U.S.G.S. QUAD: CIRLCE DOT GULCH, CO
- 3) ELEVATIONS BASED ON N.A.V.D. 1988
- 4) LATITUDES AND LONGITUDES ARE BASED ON NAD 83, COLORADO CENTRAL ZONE.
- 5) GPS OPERATOR ROBERT WOOD, OBSERVED A PDOP OF 3.3.
- 6) ALL GPS OBSERVATIONS ARE IN COMPLIANCE WITH COGCC RULE NO. 215.
- 7) SURFACE AND BOTTOM HOLE LOCATIONS ARE MEASURED 90° FROM SECTION LINES.

#### SURVEYOR'S CERTIFICATE

I, George R. Bauer: a Professional Land Surveyor in the State of Colorado do hereby certify that this Survey was made under my direct supervision, and that this plat represents said Survey.



COLORADO P.L.S. 27925



CONSTRUCTION SURVEYS, INC.  
0012 SUNRISE BLVD.  
SILT, CO 81652  
(970)876-5753

VIEW: 1A

SURVEYED: 09/06/07	SCALE: 1" = 1000'
DRAFTED: 01/28/10	DWG: BERRY\CHEV_F13-697
CHECKED: 01/29/10	SHEET: 1 of 11