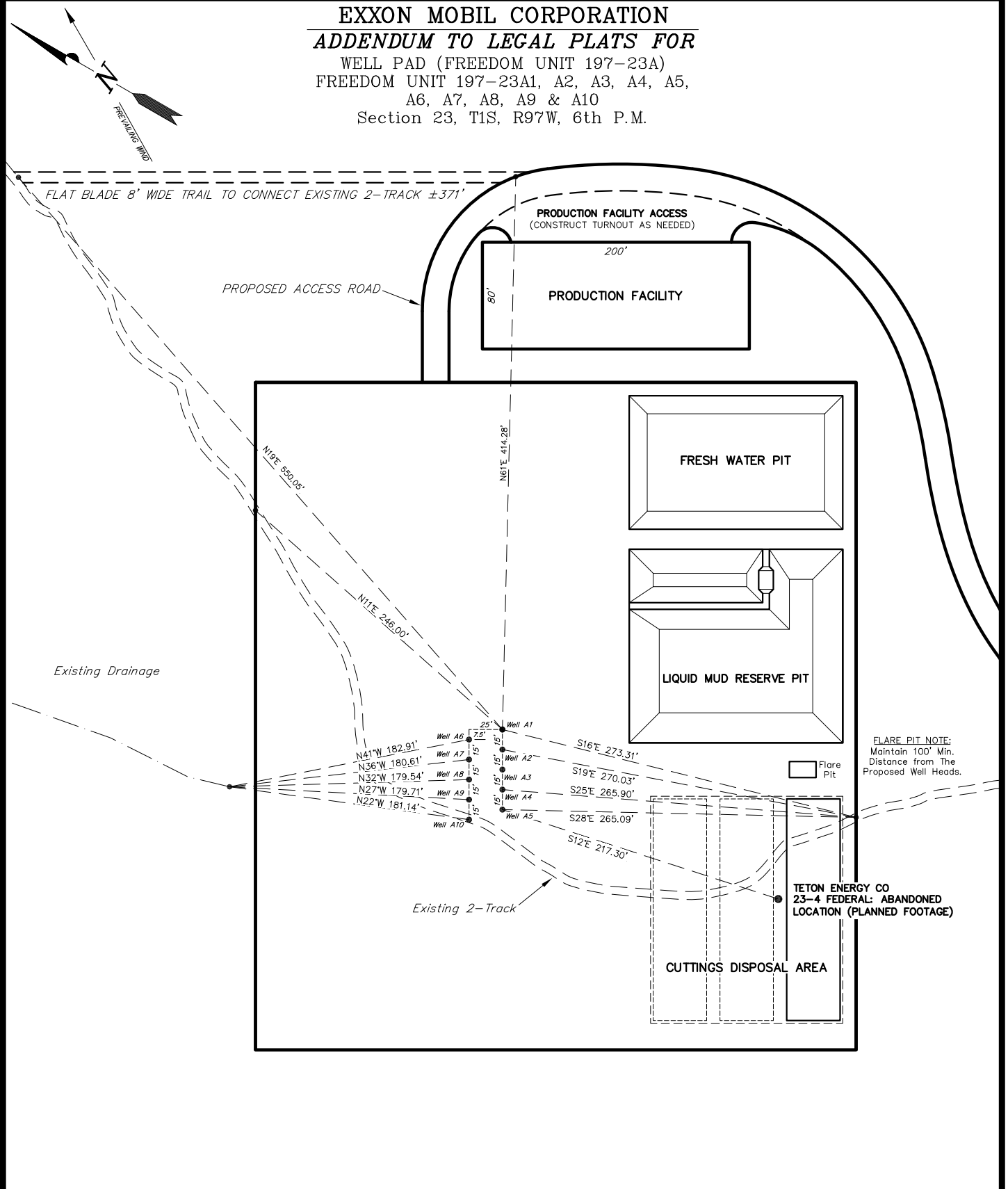
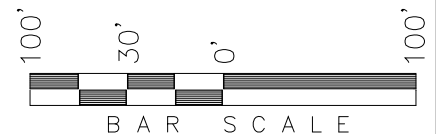


**EXXON MOBIL CORPORATION**  
**ADDENDUM TO LEGAL PLATS FOR**  
 WELL PAD (FREEDOM UNIT 197-23A)  
 FREEDOM UNIT 197-23A1, A2, A3, A4, A5,  
 A6, A7, A8, A9 & A10  
 Section 23, T1S, R97W, 6th P.M.



**SURFACE USE NOTE:**  
 Surface use of the well site is grazing. Vegetation consists mainly of Pine Trees, Cedar Trees, Sagebrush, Cacti & Native Grasses.



SURVEYED BY: D.P.	DATE SURVEYED: 08-21-07
DRAWN BY: D.COX	DATE DRAWN: 09-06-07
SCALE: 1" = 100'	REVISED: 01-30-10 D.COX

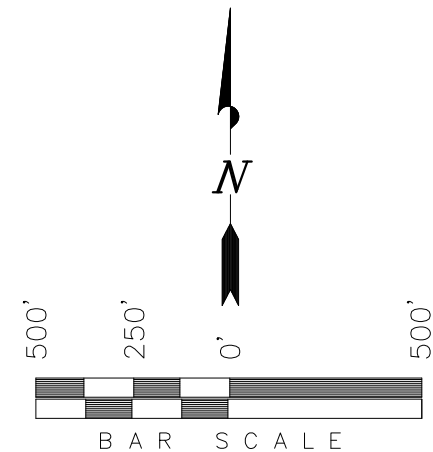
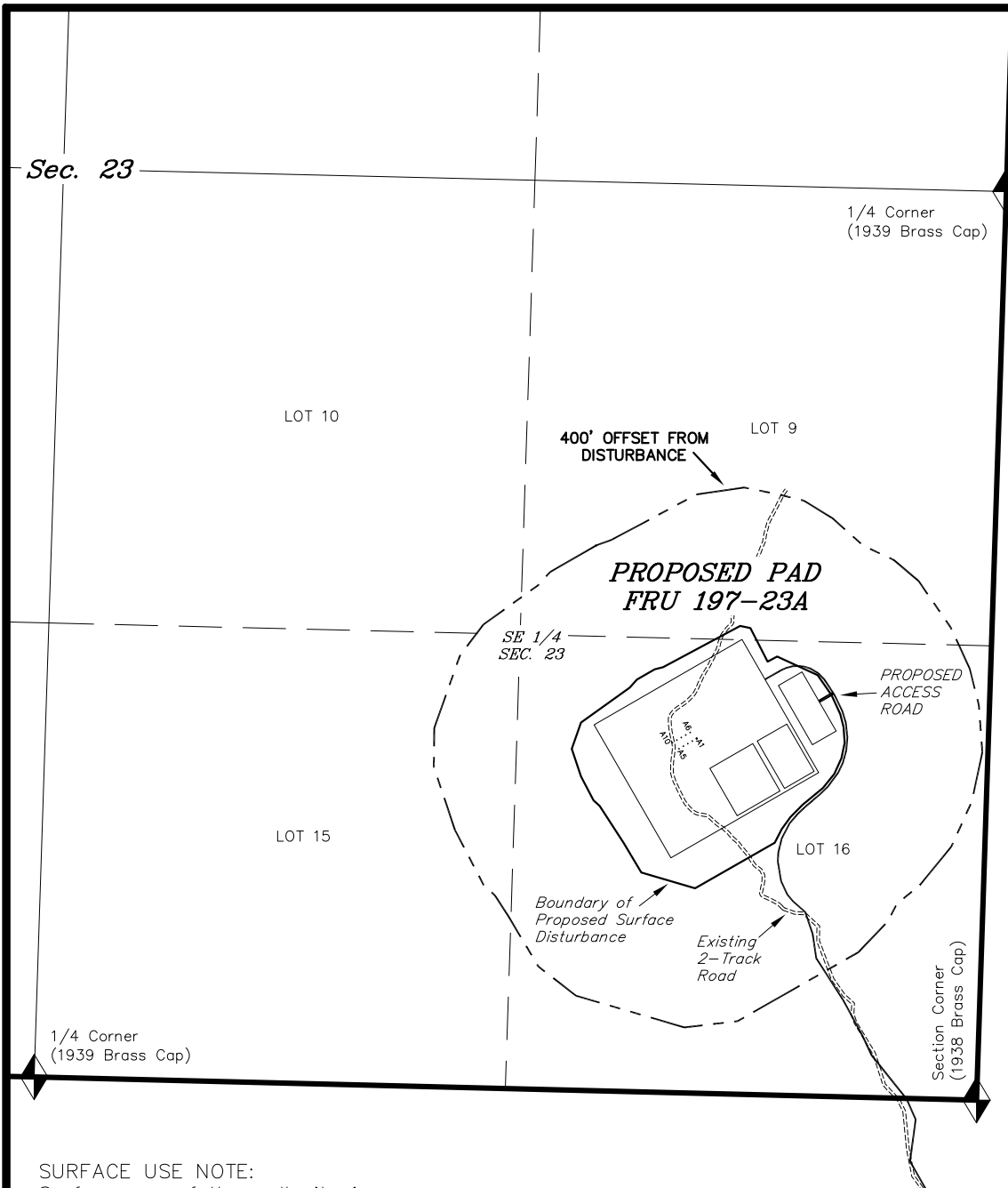
**Tri State**  
*Land Surveying, Inc.*  
 180 NORTH VERNAL AVE. VERNAL, UTAH 84078  
 (435) 781-2501

**SHEET**  
**1k**

# Exxon Mobil Corporation

## ADDENDUM TO LEGAL PLATS FOR

WELL PAD (FREEDOM UNIT 197-23A)  
FREEDOM UNIT 197-23A1, A2, A3, A4, A5, A6, A7, A8, A9 & A10  
Section 23, T1S, R97W, 6th P.M.



### SURFACE USE NOTE:

Surface use of the well site is grazing. Vegetation consists mainly of Pine Trees, Cedar Trees, Sagebrush, Cacti & Native Grasses.

SURVEYED BY: D.P.	SURVEY DATE: 08-21-07
DRAWN BY: F.T.M.	DATE DRAWN: 01-25-10
SCALE: 1" = 500'	REVISED: F.T.M. 01-29-10

**Tri State**  
Land Surveying, Inc.  
180 NORTH VERNAL AVE. VERNAL, UTAH 84078

SHEET  
1kk