

## BERRY PETROLEUM COMPANY

Well location, OXY 33-10D, located as shown in LOT 4 of Section 33, T6S, R97W, 6th P.M., Garfield County, Colorado.

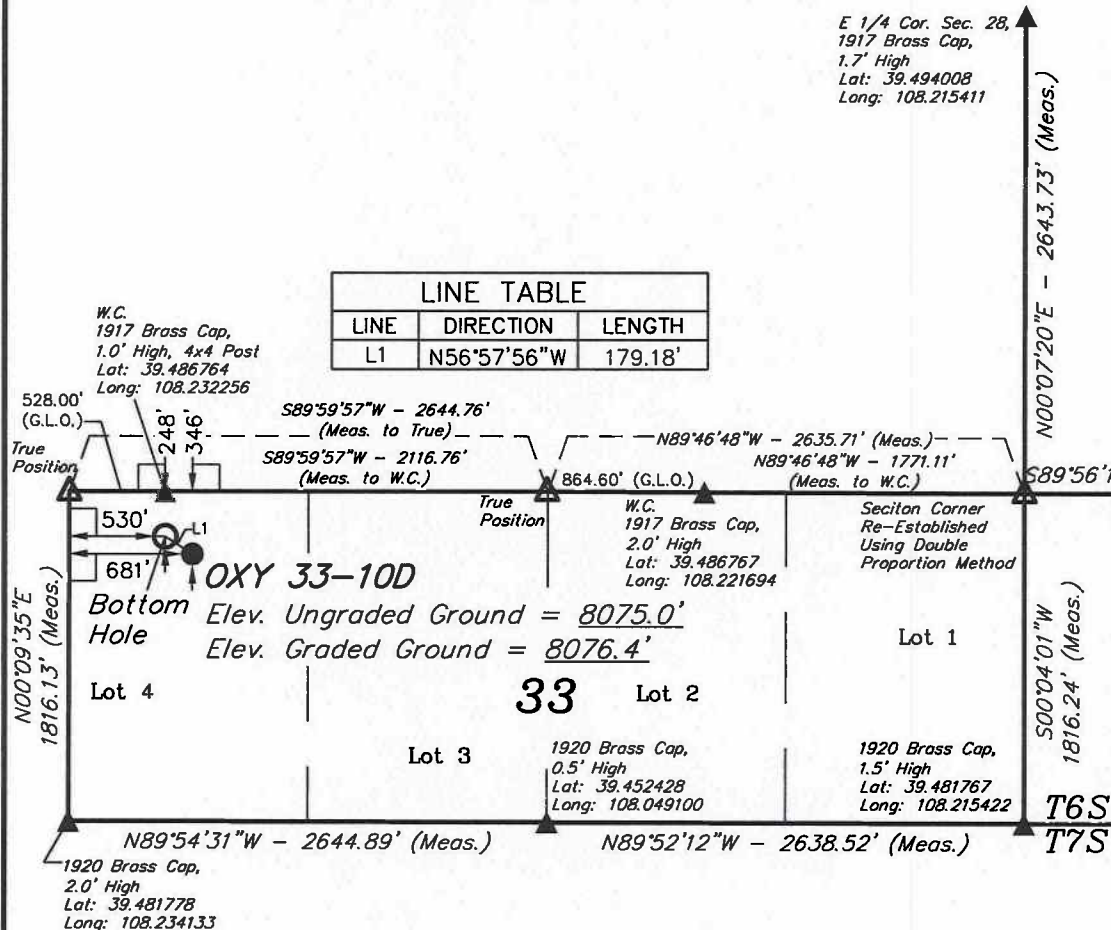
### BASIS OF ELEVATION

SPOT ELEVATION AT THE NORTHWEST CORNER OF SECTION 30, T5S, R95W, 6th P.M. TAKEN FROM THE FORKED GULCH QUADRANGLE, COLORADO, GARFIELD COUNTY, 7.5 MINUTE SERIES (TOPOGRAPHICAL MAP) PUBLISHED BY THE UNITED STATES DEPARTMENT OF THE INTERIOR, GEOLOGICAL SURVEY. SAID ELEVATION IS MARKED AS BEING 5966 FEET.

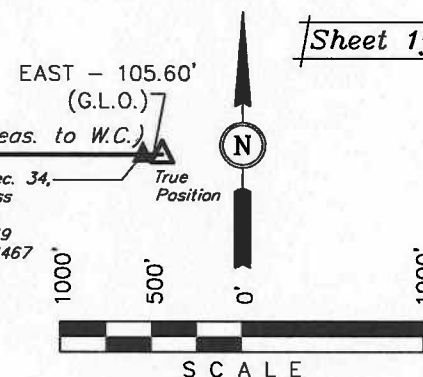
## BASIS OF BEARINGS

BASIS OF BEARINGS IS A G.P.S. OBSERVATION.

LINE TABLE		
LINE	DIRECTION	LENGTH
L1	N56°57'56"W	179.18'



Sheet 1j of 12



## CERTIFICATE

THIS IS TO CERTIFY THAT THE ABOVE PLAT WAS PREPARED FROM  
FIELD NOTES OF ACTUAL SURVEYS MADE BY ME OR UNDER MY  
SUPERVISION AND THAT THE SAME ARE TRUE AND CORRECT TO THE  
BEST OF MY KNOWLEDGE AND BELIEF.

REGISTERED LAND SURVEYOR  
REGISTRATION NO. 97492  
STATE OF COLORADO

NOTE:  
SEE ADDENDUM TO LEGAL PLAT FOR  
EXISTING IMPROVEMENTS WITHIN 400'  
OF THE PROPOSED WELL HEAD.

LEGEND:

- L = 90° SYMBOL  
 ● = PROPOSED WELL HEAD.  
 ▲ = SECTION CORNERS  
 RE-ESTABLISHED.  
 (Not Set on Ground)  
 ▲ = SECTION CORNERS LOCATED

PDOP = 2.3

NAD 83 (TARGET BOTTOM HOLE)		NAD 83 (SURFACE LOCATION)	
LATITUDE	= 39°29'09.90" (39.486083)	LATITUDE	= 39°29'08.94" (39.485817)
LONGITUDE	= 108°13'56.09" (108.232247)	LONGITUDE	= 108°13'54.17" (108.231714)
NAD 27 (TARGET BOTTOM HOLE)		NAD 27 (SURFACE LOCATION)	
LATITUDE	= 39°29'09.98" (39.486105)	LATITUDE	= 39°29'09.02" (39.485839)
LONGITUDE	= 108°13'53.79" (108.231608)	LONGITUDE	= 108°13'51.87" (108.231075)

# UINTAH ENGINEERING & LAND SURVEYING

85 SOUTH 200 EAST - VERNAL, UTAH 84078

(435) 789-1017

SCALE 1" = 1000'	DATE SURVEYED: 08-12-09	DATE DRAWN: 09-07-09
PARTY B.J. B.B. K.G.	REFERENCES G.L.O. PLAT	
WEATHER WARM	FILE BERRY PETROLEUM COMPANY	