

LINE	BEARING	LENGTH
L1	N00°02'02"E	718.08'
L2	N89°56'20"W	319.44'

1912 Brass Cap, 0.4' High, E-W Fenceline, Pile of Stones
 Lat: 39.546719
 Long: 108.121375

T6S, R96W, 6th P.M.

EnCana Oil & Gas (USA) INC.

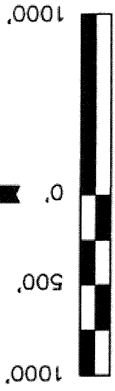
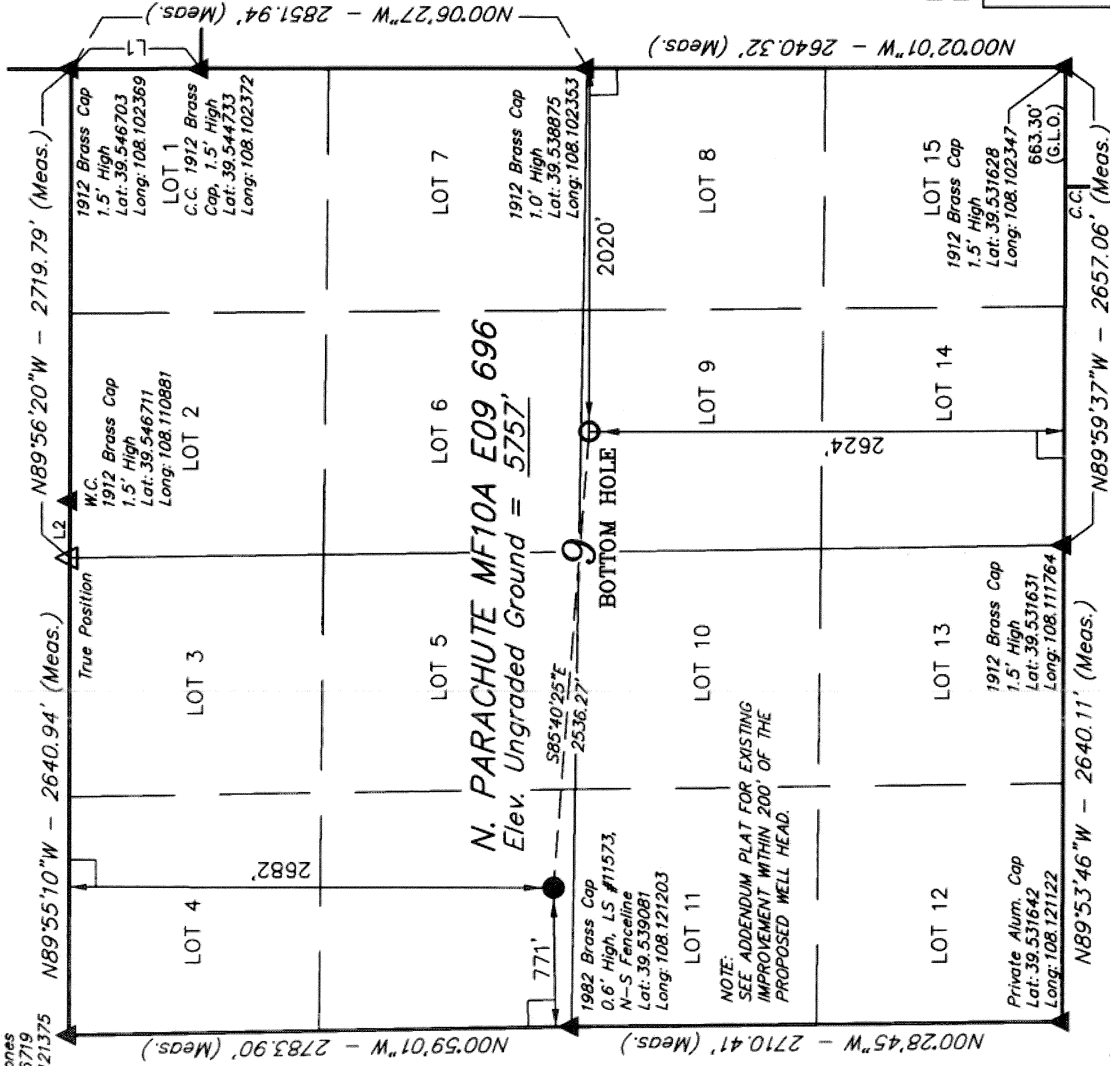
Well location, N. PARACHUTE MF10A E09 696, located as shown in the SW 1/4 NW 1/4 of Section 9, T6S, R96W, 6th P.M., Garfield County, Colorado.

BASIS OF ELEVATION

SPOT ELEVATION AT THE NORTHWEST CORNER OF SECTION 30, T5S, R95W, 6th P.M. TAKEN FROM THE FORKED GULCH QUADRANGLE, COLORADO, GARFIELD COUNTY, 7.5 MINUTE SERIES (TOPOGRAPHICAL MAP) PUBLISHED BY THE UNITED STATES DEPARTMENT OF THE INTERIOR, GEOLOGICAL SURVEY. SAID ELEVATION IS MARKED AS BEING 5966 FEET.

BASIS OF BEARINGS

BASIS OF BEARINGS IS A G.P.S. OBSERVATION.



CERTIFICATE

THIS IS TO CERTIFY THAT THE ABOVE PLAT WAS PREPARED FROM FIELD NOTES OF ACTUAL SURVEYS MADE BY ME OR UNDER MY SUPERVISION AND THAT THE SAME ARE TRUE AND CORRECT TO THE BEST OF MY KNOWLEDGE AND BELIEF.

REGISTERED LAND SURVEYOR
 REGISTRATION NO. 17452
 STATE OF COLORADO

Revised: 12-24-08 D.R.B.
 Revised: 06-11-07 D.R.B.

UNTAH ENGINEERING & LAND SURVEYING
 85 SOUTH 200 EAST - VERNAL, UTAH 84078
 (435) 789-1017

SCALE 1" = 1000'	DATE SURVEYED: 09-18-06	DATE DRAWN: 10-23-06
PARTY B.H. F.Y. D.R.B.	REFERENCES G.L.O. PLAT	
WEATHER COOL	FILE	
EnCana Oil & Gas (USA) INC.		

LEGEND:

- = 90° SYMBOL
- = PROPOSED WELL HEAD.
- ▲ = SECTION CORNERS LOCATED.

NAD 83 (TARGET BOTTOM HOLE)	NAD 83 (SURFACE LOCATION)
LATITUDE = 39°32'19.79" (39.538831)	LATITUDE = 39°32'21.68" (39.539356)
LONGITUDE = 108°06'34.24" (108.109511)	LONGITUDE = 108°07'06.51" (108.118475)
NAD 27 (TARGET BOTTOM HOLE)	NAD 27 (SURFACE LOCATION)
LATITUDE = 39°32'19.87" (39.538853)	LATITUDE = 39°32'21.76" (39.539378)
LONGITUDE = 108°06'31.96" (108.108878)	LONGITUDE = 108°07'04.23" (108.117842)

PDOP = 5.9

NOTE:
 SEE ADDENDUM PLAT FOR EXISTING IMPROVEMENT WITHIN 200' OF THE PROPOSED WELL HEAD.