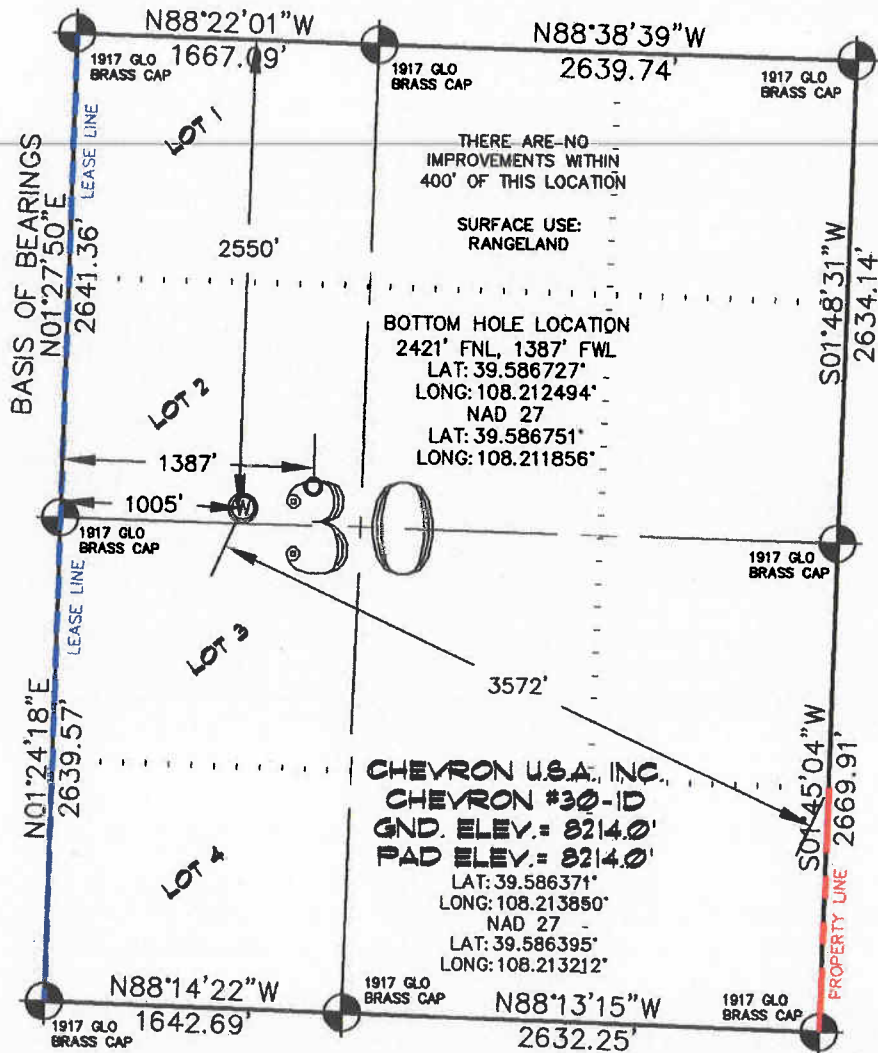


SEC. 30, T. 5 S., R. 96 W. OF THE 6TH P.M. Chevron F30-596
Well Location



-LEGEND-

- SECTION CORNER LOCATION
BASED ON GLO RECORD
INFORMATION
- ⊙ FIELD SURVEYED SECTION
CORNER LOCATIONS
- ⊙ FIELD SURVEYED PAD
LOCATION
- CALCULATED BOTTOM
HOLE LOCATION

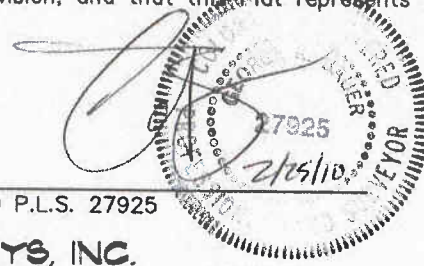
THIS WELL LOCATION PLAT WAS PREPARED FOR BERRY PETROLEUM COMPANY, TO LOCATE THE CHEVRON #30-1D WELL, 2550 FEET FROM THE NORTH LINE AND 1005 FEET FROM THE WEST LINE IN LOT 2 (S 1/2 NW 1/4) SECTION 30, T. 5 S., R. 96 W. OF THE 6TH P.M. GARFIELD COUNTY, COLORADO.

REFERENCE NOTES

- 1) T. 5 S., R. 96 W., 6TH P.M. GLO PLAT.
- 2) U.S.G.S. QUAD: CIRLCE DOT GULCH, CO
- 3) ELEVATIONS BASED ON N.A.V.D. 1988
- 4) LATITUDES AND LONGITUDES ARE BASED ON NAD 83, COLORADO CENTRAL ZONE.
- 5) GPS OPERATOR IVAN MARTIN, OBSERVED A PDOP OF 2.3.
- 6) ALL GPS OBSERVATIONS ARE IN COMPLIANCE WITH COGCC RULE NO. 215.
- 7) SURFACE AND BOTTOM HOLE LOCATIONS ARE MEASURED 90° FROM SECTION LINES.

SURVEYOR'S CERTIFICATE

I, George R. Bauer: a Professional Land Surveyor in the State of Colorado do hereby certify that this Survey was made under my direct supervision, and that this Plat represents said Survey.



COLORADO P.L.S. 27925

VIEW: 1C



CONSTRUCTION SURVEYS, INC.

0012 SUNRISE BLVD.
SILT, CO 81652
(970)876-5753

SURVEYED: 02/12/10

DRAFTED: 02/23/10

CHECKED: 01/25/10

SCALE: 1" = 1000'

DWG: BERRY\CHEVF30-596

SHEET: 1 of 11