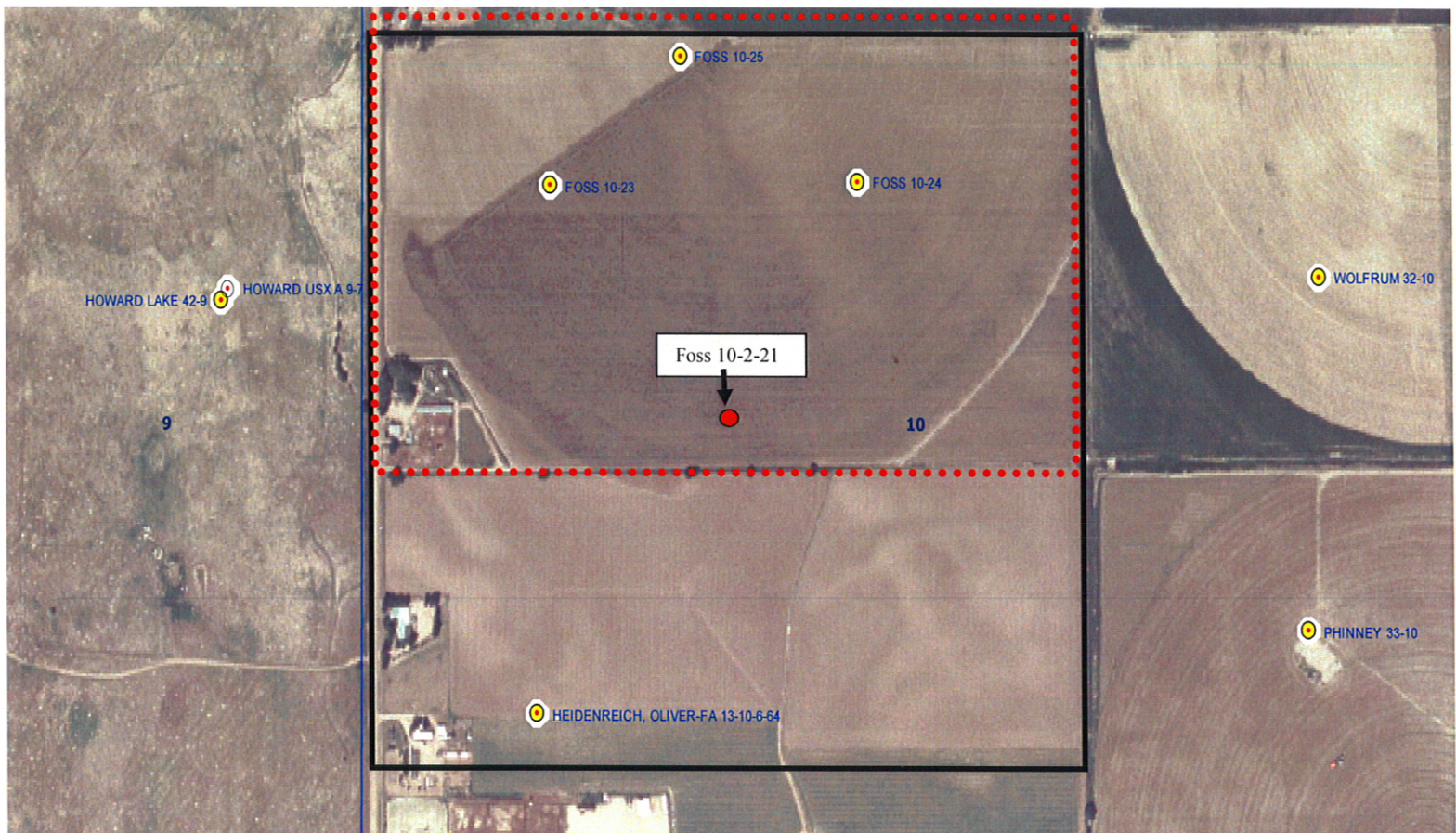


Foss 10-2-21

Township 6N, Range 64 West, 6th P.M.
Section 10



LEGEND



Proposed 318a spacing unit plan



Surface/bottom hole bottom of the S/2NW/4 Section 10, T6N,
R64W
Governmental 1/4 Section

The governmental 1/4 Section has less than 8 bottom hole wells producing from the
Codell, Niobrara, and J-Sand formations.

FOSS 10-2-21

WELL LOCATION

SE $\frac{1}{4}$ NW $\frac{1}{4}$ SEC. 10, T.6N., R.64W.

See Visible Improvements Exhibit
for all visible improvements
within 200' of wellhead.

LEGEND

SECTION LINE
QUARTER SECTION LINE
SIXTEENTH SECTION LINE
FOUND ALIQUOT MONUMENT

All distances to section
lines are measured at
right angles to said
section lines.

Ground elevation shown
is approximate and is
based on an observed
GPS elevation (NAVD
1988 DATUM).

Bearings shown are Grid
Bearings of the Colorado
State Plane Coordinate
System, North Zone, North
American Datum 1983/92.

King Surveyors Inc. of Windsor, Colorado has in accordance with a request from Doug Brace
for Petro-Canada Resources (USA), Inc. determined the location of Foss 10-2-21 to be
2501' from the North line and 1414' from the West line of Section 10, Township 6 North,
Range 64 West of the Sixth Principal Meridian, County of Weld, State of Colorado.



Steven A. Lund—On behalf of King Surveyors, Inc.
Licensed Land Surveyor No. 34995
State of Colorado

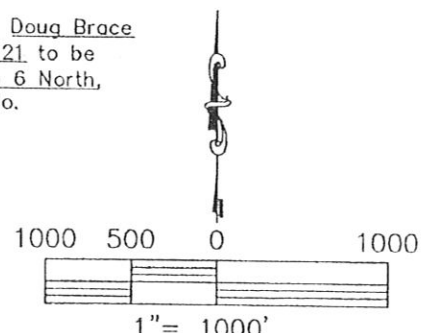
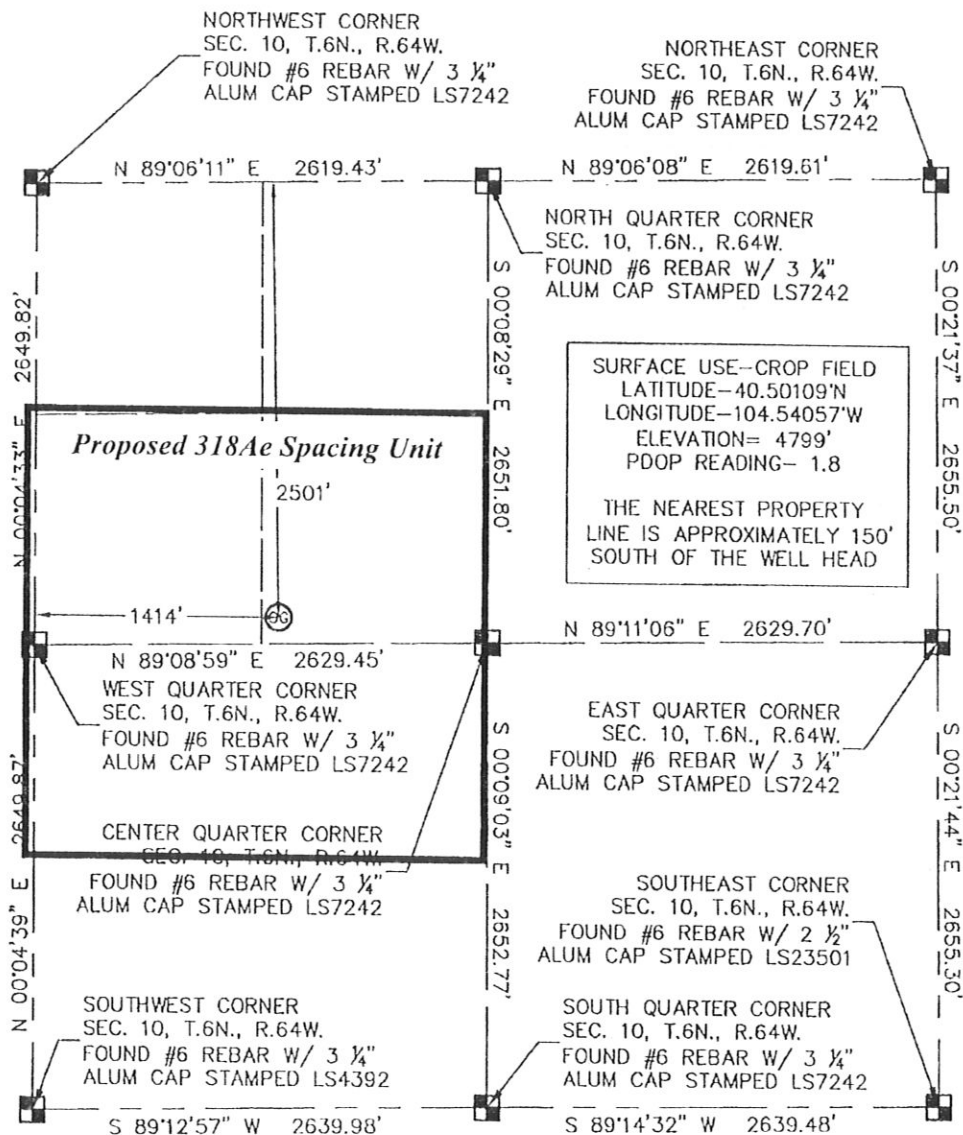


KING SURVEYORS, INC.

650 E. Garden Drive | Windsor, Colorado 80550

phone: (970) 686-5011 | fax: (970) 686-5821

www.kingsurveyors.com



PROJECT NO: 2003193

DATE: 7/1/2008

CLIENT: PETRO-CANADA

DWG: 2003193WELL

FIELD OPERATOR: BRIAN BRINKMAN

DATE OF WORK: 6/26/2008