

EOG RESOURCES, INC.

FOX CREEK #02-25H

LOCATED IN WELD COUNTY, COLORADO
SECTION 25, T12N, R63W, 6th P.M.

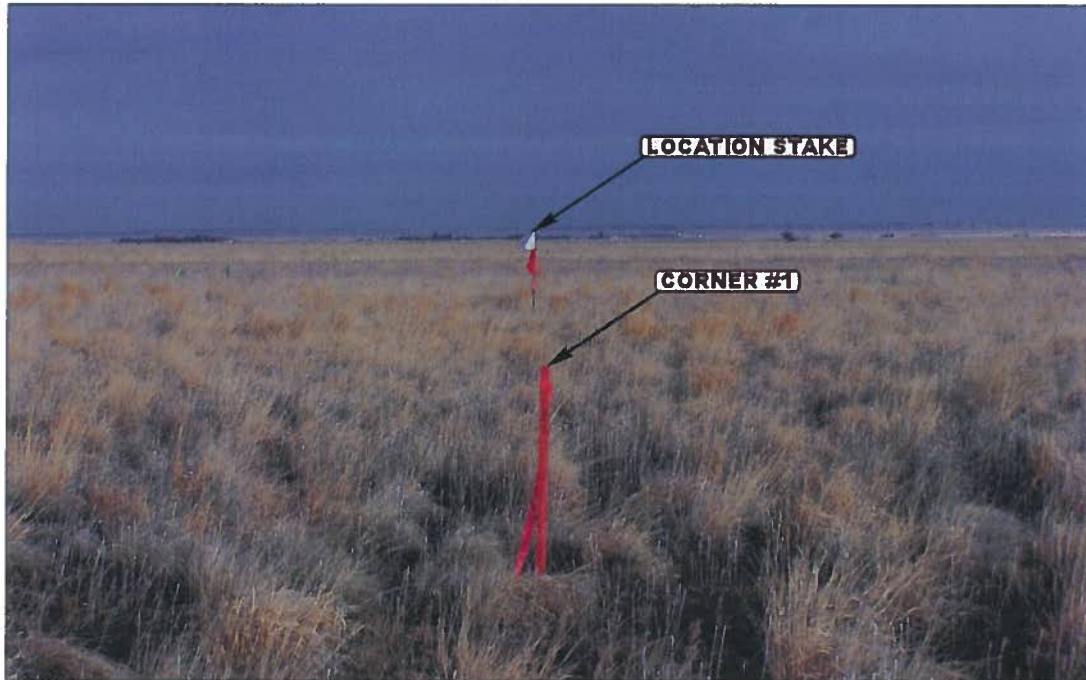


PHOTO: VIEW OF LOCATION STAKE

CAMERA ANGLE: EASTERLY

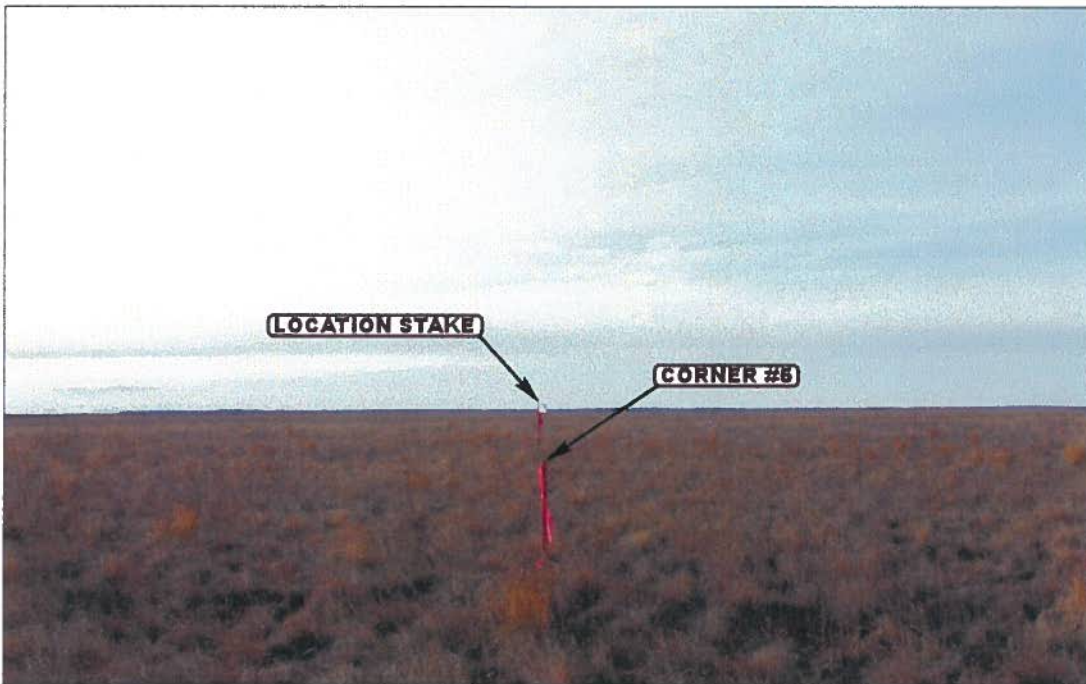


PHOTO: VIEW OF LOCATION STAKE

CAMERA ANGLE: WESTERLY



UELS

Uintah Engineering & Land Surveying

85 South 200 East Vernal, Utah 84078
435-789-1017 FAX (435) 789-1813

LOCATION PHOTOS

01 **18** **10**
MONTH DAY YEAR

TAKEN BY: G.S.

DRAWN BY: Z.L.

REVISED: 00-00-00

PHOTO

P2

EOG RESOURCES, INC.
FOX CREEK #02-25H
LOCATED IN WELD COUNTY, COLORADO
SECTION 25, T12N, R63W, 6th P.M.



PHOTO: VIEW OF LOCATION STAKE

CAMERA ANGLE: NORTHERLY

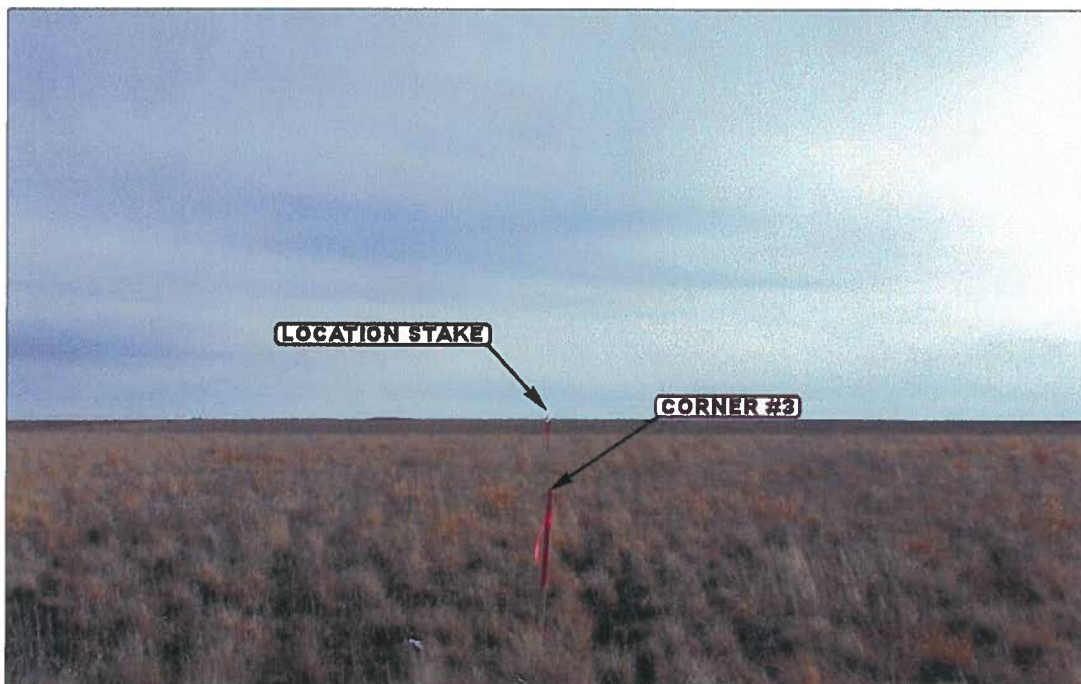


PHOTO: VIEW OF LOCATION STAKE

CAMERA ANGLE: SOUTHERLY



- Since 1964 -



Uintah Engineering & Land Surveying
85 South 200 East Vernal, Utah 84078
435-789-1017 FAX (435) 789-1813

LOCATION PHOTOS

01 **18** **10**
MONTH DAY YEAR

TAKEN BY: G.S.

DRAWN BY: Z.L.

REVISED: 00-00-00

PHOTO

P3

EOG RESOURCES, INC.

FOX CREEK #02-25H

LOCATED IN WELD COUNTY, COLORADO
SECTION 25, T12N, R63W, 6th P.M.

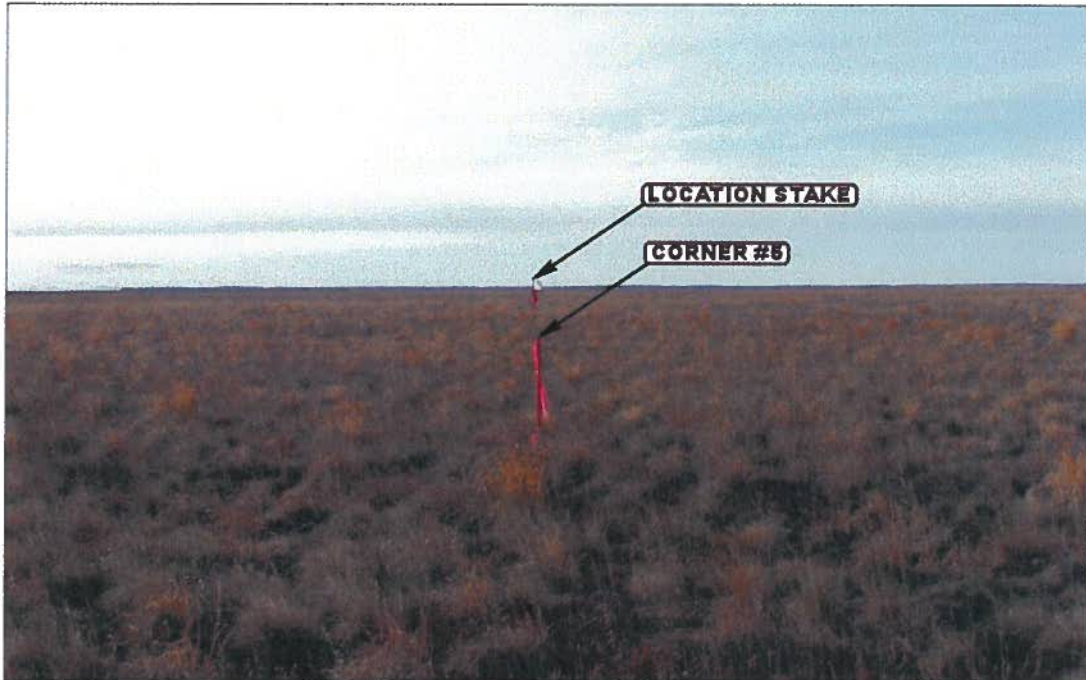


PHOTO: VIEW FROM CORNER #5 TO LOCATION STAKE

CAMERA ANGLE: WESTERLY



PHOTO: VIEW FROM BEGINNING OF PROPOSED ACCESS

CAMERA ANGLE: NORTHERLY



- Since 1964 -



Uintah Engineering & Land Surveying

85 South 200 East Vernal, Utah 84078
435-789-1017 FAX (435) 789-1813

LOCATION PHOTOS

01 18 10
MONTH DAY YEAR

TAKEN BY: G.S.

DRAWN BY: Z.L.

REVISED: 00-00-00

PHOTO

P1