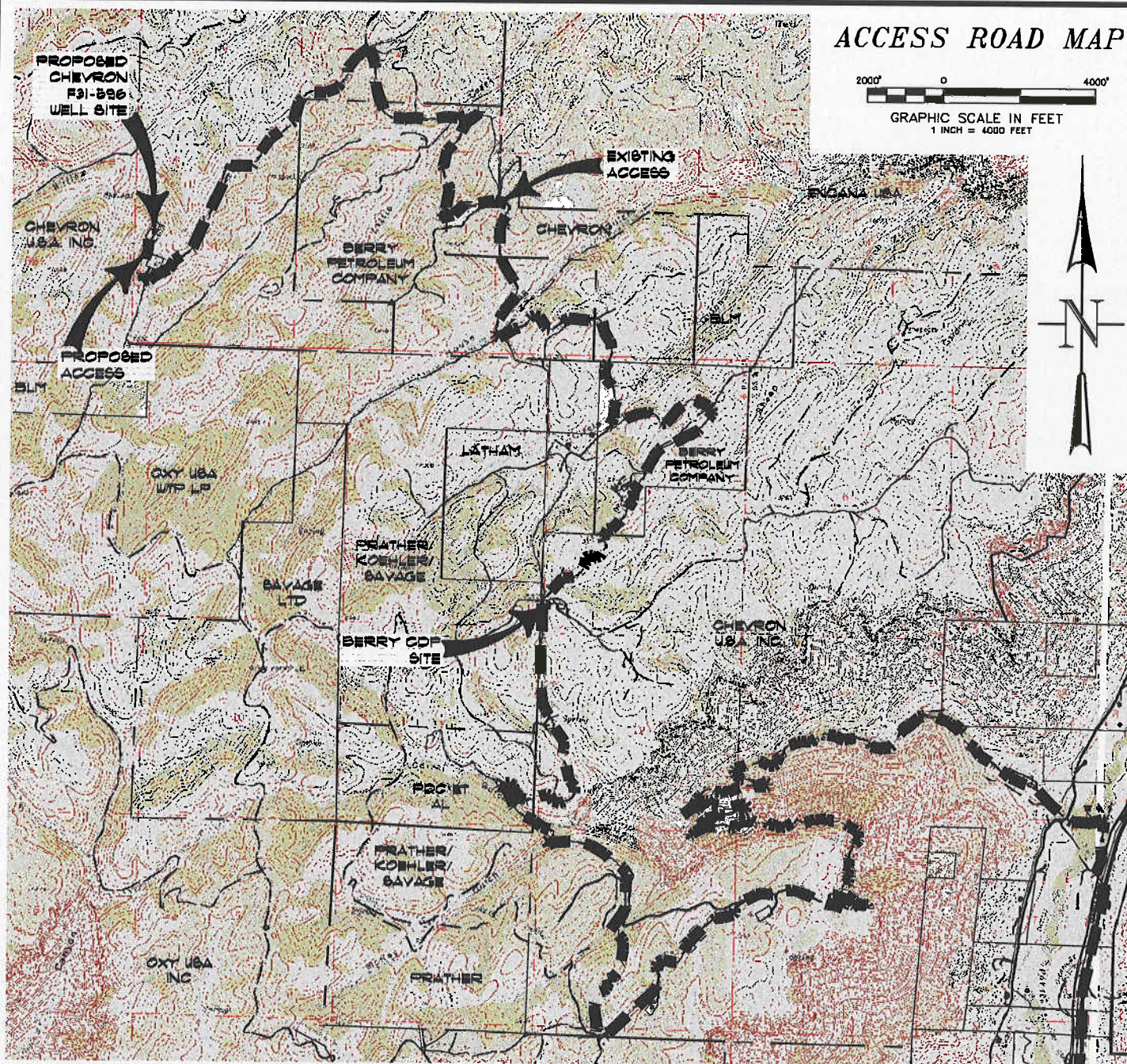


ACCESS ROAD MAP



ACCESS:

FROM THE INTERSECTION OF HIGHWAY 6 & 24 AND COUNTY ROAD 215 AT PARACHUTE, PROCEED IN A GENERAL NORTHWESTERLY DIRECTION ALONG COUNTY ROAD 215 ± 7.2 MILES TO AN INTERSECTION WITH A DIRT/GRAVEL ROAD ON THE LEFT, PROCEED LEFT IN A GENERAL NORTHWESTERLY DIRECTION ± 350 FEET TO AN INTERSECTION WITH A DIRT/GRAVEL ROAD ON THE RIGHT, PROCEED RIGHT IN A GENERAL NORTHERLY DIRECTION ± 0.3 MILES TO AN INTERSECTION WITH A DIRT/GRAVEL ROAD ON THE LEFT, PROCEED LEFT IN A GENERAL WESTERLY DIRECTION CROSSING THE PARACHUTE CREEK BRIDGE, PROCEED IN A GENERAL WESTERLY DIRECTION ALONG THE GARDEN GULCH ROAD ASCENDING THRU THE BOOKCLIFFS ± 10.4 MILES TO THE BERRY CDP SITE ON THE RIGHT, CONTINUE FORWARD PAST THE BERRY CDP SITE IN A GENERAL NORTHEASTERLY DIRECTION APPROXIMATELY 5.7 MILES TO AN INTERSECTION WITH A PROPOSED MARATHON ACCESS ROAD ON THE LEFT, PROCEED LEFT IN A GENERAL SOUTHWESTERLY DIRECTION APPROXIMATELY 1.7 MILES TO AN INTERSECTION WITH A PROPOSED FLAGGED ACCESS CENTERLINE ON THE LEFT, PROCEED LEFT IN A GENERAL SOUTHERLY AND THEN NORTHWESTERLY DIRECTION APPROXIMATELY 0.2 MILES TO THE PROPOSED CHEVRON #F31-596 WELL PAD, BEING THE LOCATION.



CONSTRUCTION SURVEYS, INC. Chevron #31-596
 0012 SUNRISE BLVD. LOT 2 (S 1/2 NW 1/4) SECTION 31, T. 5 S., R. 96 W.
 SILT, CO 81652 BERRY PETROLEUM COMPANY
 (970) 876-5753

SCALE: 1" = 4000'

SHEET 4 OF 11