

WELL PAD DIAGRAM

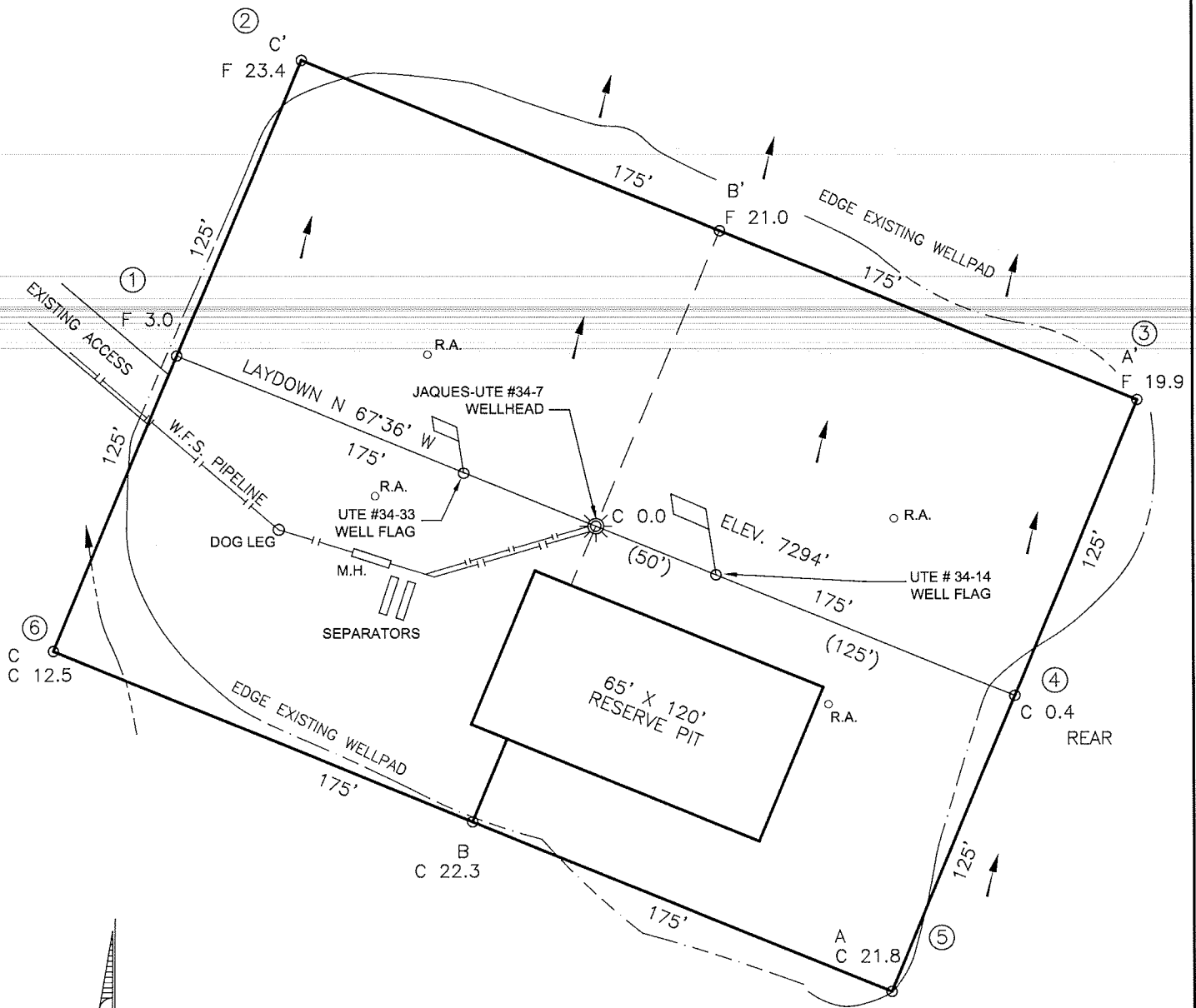
COMPANY: BLACK HILLS EXPLORATION & PRODUCTION

LEASE: UTE No. 34-14


SURFACE FOOTAGE: 2124 FNL 1677 FEL BOTTOM HOLE FOOTAGE: 1060 FNL 1060 FEL

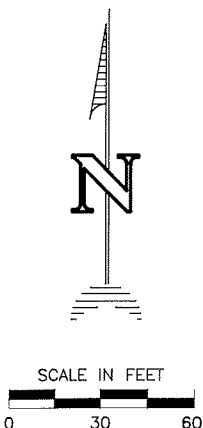
SEC.: 34, TWN: 33-N, RNG: 8-W, NMPM LA PLATA COUNTY, COLORADO

ELEVATION: 7249'



NOTE:
DAGGETT ENTERPRISES, INC. IS NOT LIABLE FOR
UNDERGROUND UTILITIES OR PIPELINES. UTILITY
NOTIFICATION CENTER OF COLORADO TO BE NOTIFIED
48 HOURS PRIOR TO EXCAVATION OR CONSTRUCTION.

REVISION:	DATE:	REVISED BY:
CHANGE PROD. NAME	11/10/06	B.L.
 Daggett Enterprises, Inc. Surveying and Oil Field Services P. O. Box 15068 • Farmington, NM 87401 Phone (505) 326-1772 • Fax (505) 326-6019 COLORADO L.S. No. 20693		
DRAWN BY: B.L.	CADFILE: MN504PL8	
ROW#: MN504	DATE: 08/09/06	



WELL PAD CROSS-SECTIONAL DIAGRAM

COMPANY: BLACK HILLS EXPLORATION & PRODUCTION

LEASE: UTE No. 34-14

SURFACE FOOTAGE: 2124 FNL 1677 FEL BOTTOM HOLE FOOTAGE: 1060 FNL 1060 FEL

SEC.: 34, TWN: 33-N, RNG: 8-W, NMPM LA PLATA COUNTY, COLORADO

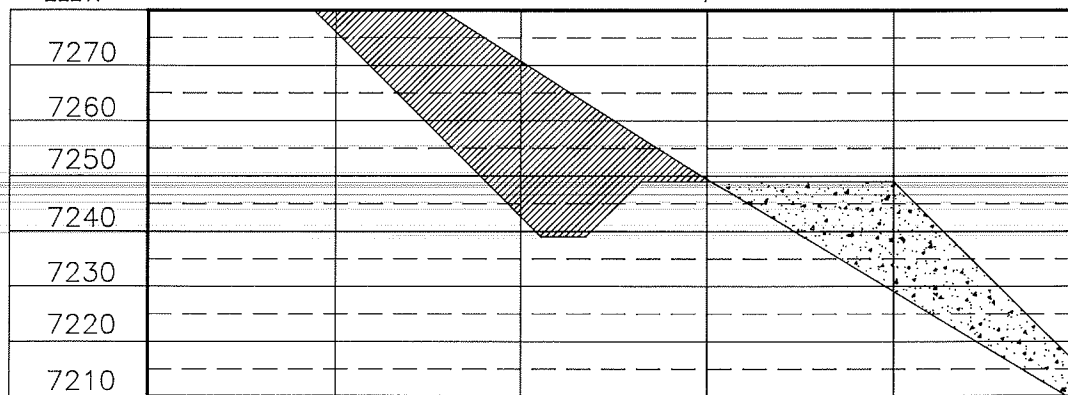
ELEVATION: 7249'

NOTE:

DAGGETT ENTERPRISES, INC. IS NOT LIABLE FOR UNDERGROUND UTILITIES OR PIPELINES. UTILITY NOTIFICATION CENTER OF COLORADO TO BE NOTIFIED 48 HOURS PRIOR TO EXCAVATION OR CONSTRUCTION.

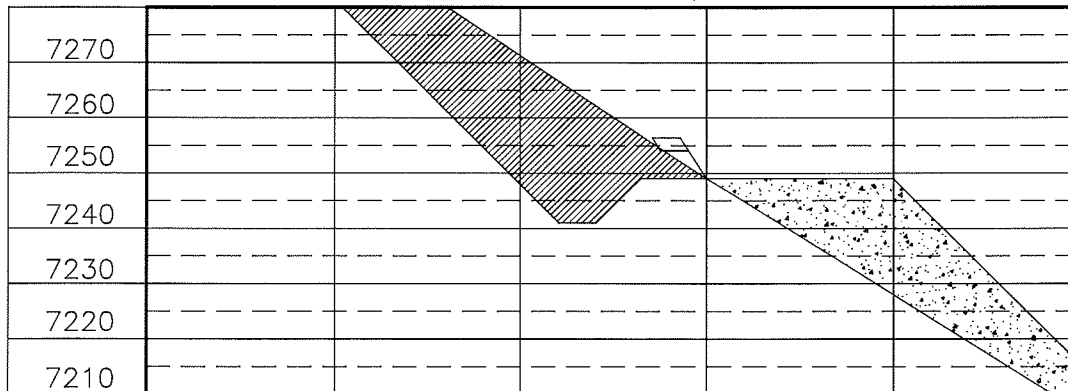
ELEV. A-A'

C/L



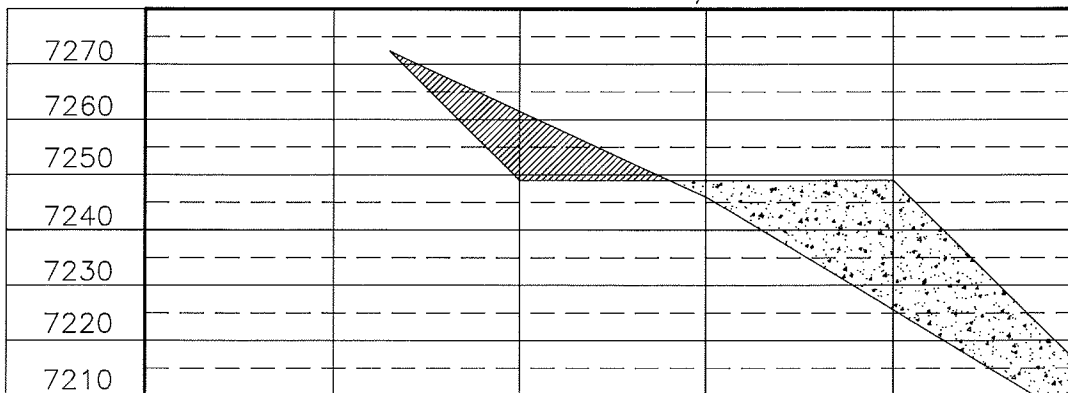
ELEV. B-B'

C/L



ELEV. C-C'

C/L



REF. DWG. MN504PL8 WELL PAD DIAGRAM

REVISION:	DATE:	REVISED BY:
CHANGE PROD. NAME	11/10/06	B.L.
Daggett Enterprises, Inc. Surveying and Oil Field Services P. O. Box 15068 • Farmington, NM 87401 Phone (505) 326-1772 • Fax (505) 326-6019 COLORADO L.S. No. 20693 CAPFILE: MN504CFB		
DRAWN BY: B.L.	DATE: 08/09/06	ROW#: MN504

