

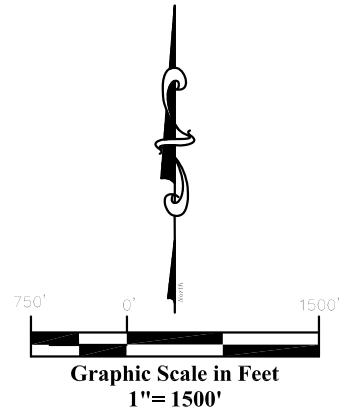
Well Location Plat

Valley Farms J2

Section 13, Township 6 South, Range 92 West

Legend

- ◆ - Field Surveyed Section Corner
- ◆ - Field Surveyed Quarter Corner
- - Calculated Section Corner Location
- ◆ - Field Surveyed 1/16 Corner



Surface Valley Farms J2

Gnd El= 5537.8
 Pad El= 5538.4
NAD83
 Lat: 39.533805299°N
 Long: 107.620570194°W
NAD27
 Lat: 39.533824701°N
 Long: 107.619956578°W

Bottom Hole Valley Farms J2

258' FSL
 1742' FEL
NAD83
 Lat: 39.535138006°N
 Long: 107.612683043°W
NAD27
 Lat: 39.535157401°N
 Long: 107.612069700°W

Valley Farms J2

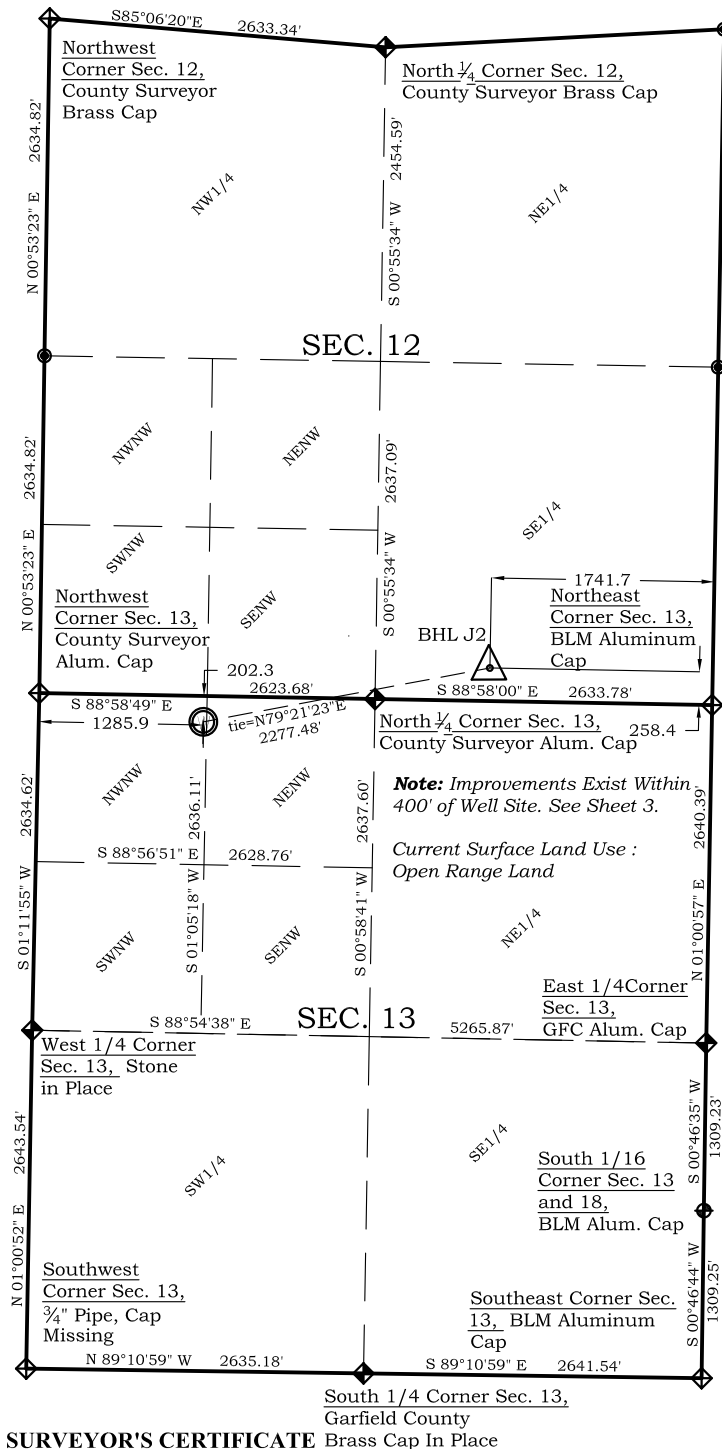
202' FNL
 1286' FWL
 WGS 84
 LATITUDE
 39.533805299°N
 LONGITUDE
 107.620570194°W
 UTM 13 NORTH
NAD 1983
 NORTHING
 14367740.237
 EASTING
 901507.674

Prepared For Antero Resources

Proposed Valley Farms J2 Well Situate in The NW 1/4 NW 1/4
 Section 13, Township 6 South, Range 92 West of the 6 th.
 Principal Meridian, County of Garfield, State of Colorado

Notes:

1. LATITUDE AND LONGITUDE COORDINATES ARE DIFFERENTIALLY CORRECTED AND BASED ON PUBLISHED NGS CONTROL STATION "KOESELL". SYSTEM: UTM ZONE: 13 NORTH DATUM: NAD 1983 (CONUS)
2. ELEVATIONS ARE BASED ON NAVD OF 1929.
3. ALL BOTTOM AND TOP HOLE LOCATIONS ARE MEASURED 90 DEGREES FROM SECTION LINE.
4. USGS QUADRANGLE MAP "SILT".
5. CURRENT SURFACE LAND USE: HAY FIELD.
6. PDOP AT THE TIME OF LOCATION OF SURFACE WELL = 1.4



SURVEYOR'S CERTIFICATE

I, SCOTT E. AIBNER, A REGISTERED LAND SURVEYOR, LICENSED UNDER THE LAWS OF THE STATE OF COLORADO DO HEREBY CERTIFY THAT THE SURVEY SHOWN HEREON WAS PREPARED BY RIVER VALLEY SURVEY, INC., FOR ANTERO RESOURCES, BY ME OR UNDER MY DIRECT SUPERVISION AND THAT THIS PLAT IS A TRUE REPRESENTATION THEREOF.

31143

SCOTT E. AIBNER, COLORADO REG. NO. 31143

BY: SCOTT E. AIBNER, COLORADO REG. NO. 31143



River Valley Survey, Inc.
 110 East 3rd. Street, Suite 213
 Rifle, Colorado 81650
 Ph: 970-379-7846

Project: VALLEY FARMS J PAD

Field Date: 01-19-10

Date: 01-26-10

Scale: 1"= 1500'

Sheet: 1 of 9

Well Location Plat
Prepared For Antero Resources

Situate In:
 NW 1/4 Section 13, T6S., R. 92 W. of the
 6th P.M., Garfield County, Colorado

