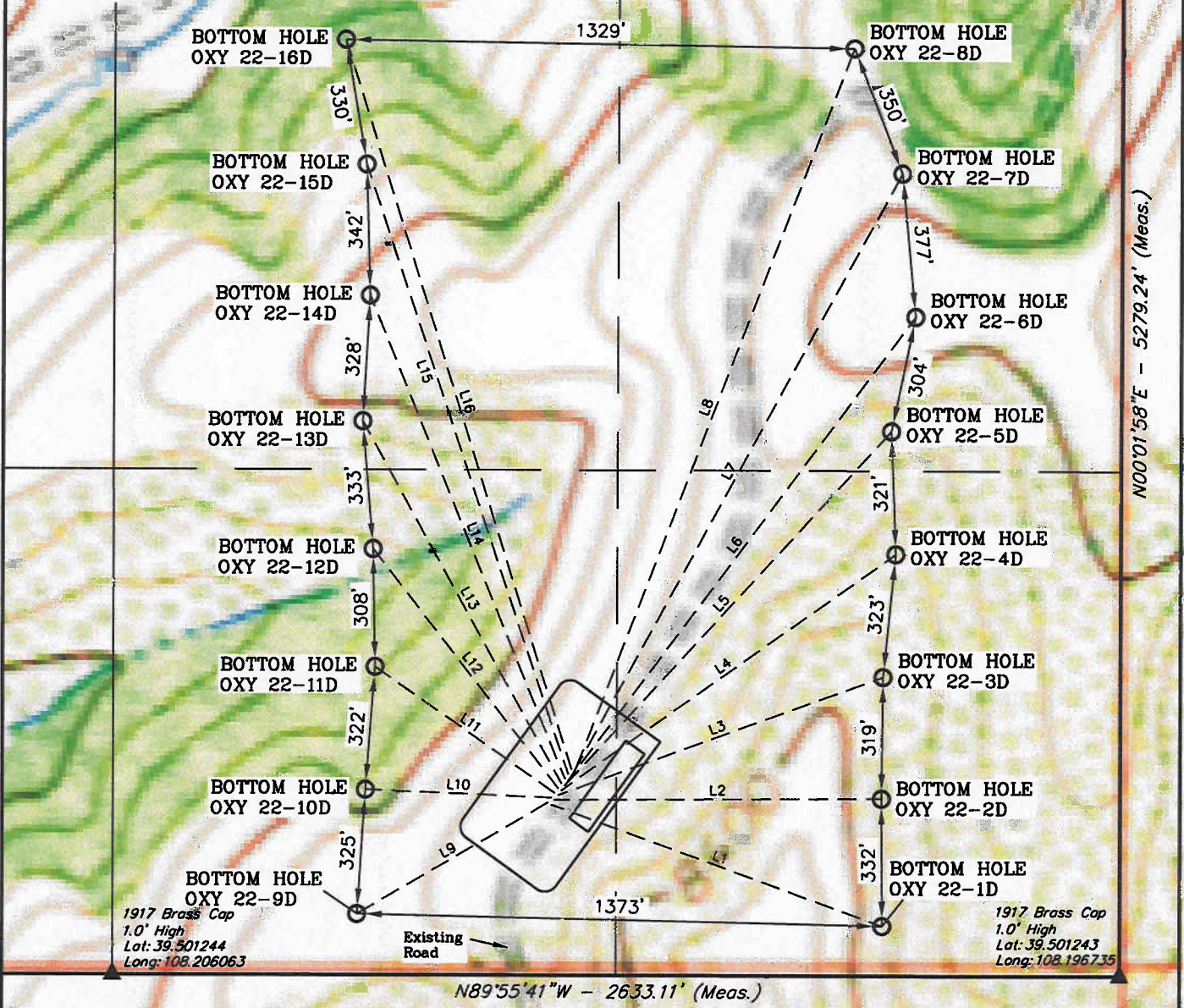


BERRY PETROLEUM COMPANY

BOTTOM HOLE FOOTAGE

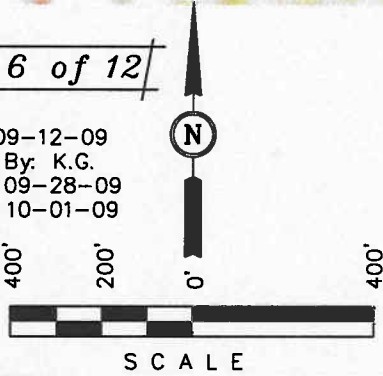
WELL PAD 022 697  
SECTION 22, T6S, R97W, 6th P.M.  
SW 1/4 SE 1/4

NE Cor. Sec. 22,  
1917 Brass Cap 1.6'  
High, Steel Post  
Lat: 39.515732  
Long: 108.196743



Sheet 6 of 12

DATE: 09-12-09  
Drawn By: K.G.  
Revised: 09-28-09  
Revised: 10-01-09



LINE TABLE			LINE TABLE		
LINE	DIRECTION	LENGTH	LINE	DIRECTION	LENGTH
L1	S69°56'59"E	921.75'	L9	S59°43'32"W	577.83'
L2	N89°43'52"E	854.60'	L10	N87°32'38"W	486.90'
L3	N69°55'10"E	904.11'	L11	N54°57'51"W	575.01'
L4	N54°37'16"E	1070.26'	L12	N37°47'56"W	792.35'
L5	N42°32'25"E	1259.23'	L13	N28°54'59"W	1080.88'
L6	N36°42'27"E	1513.70'	L14	N22°08'50"W	1361.76'
L7	N28°37'14"E	1795.84'	L15	N18°29'39"W	1677.73'
L8	N20°57'53"E	2024.58'	L16	N17°24'13"W	1995.55'

UINTAH ENGINEERING & LAND SURVEYING  
85 So. 200 East \* Vernal, Utah 84078 \* (435) 789-1017