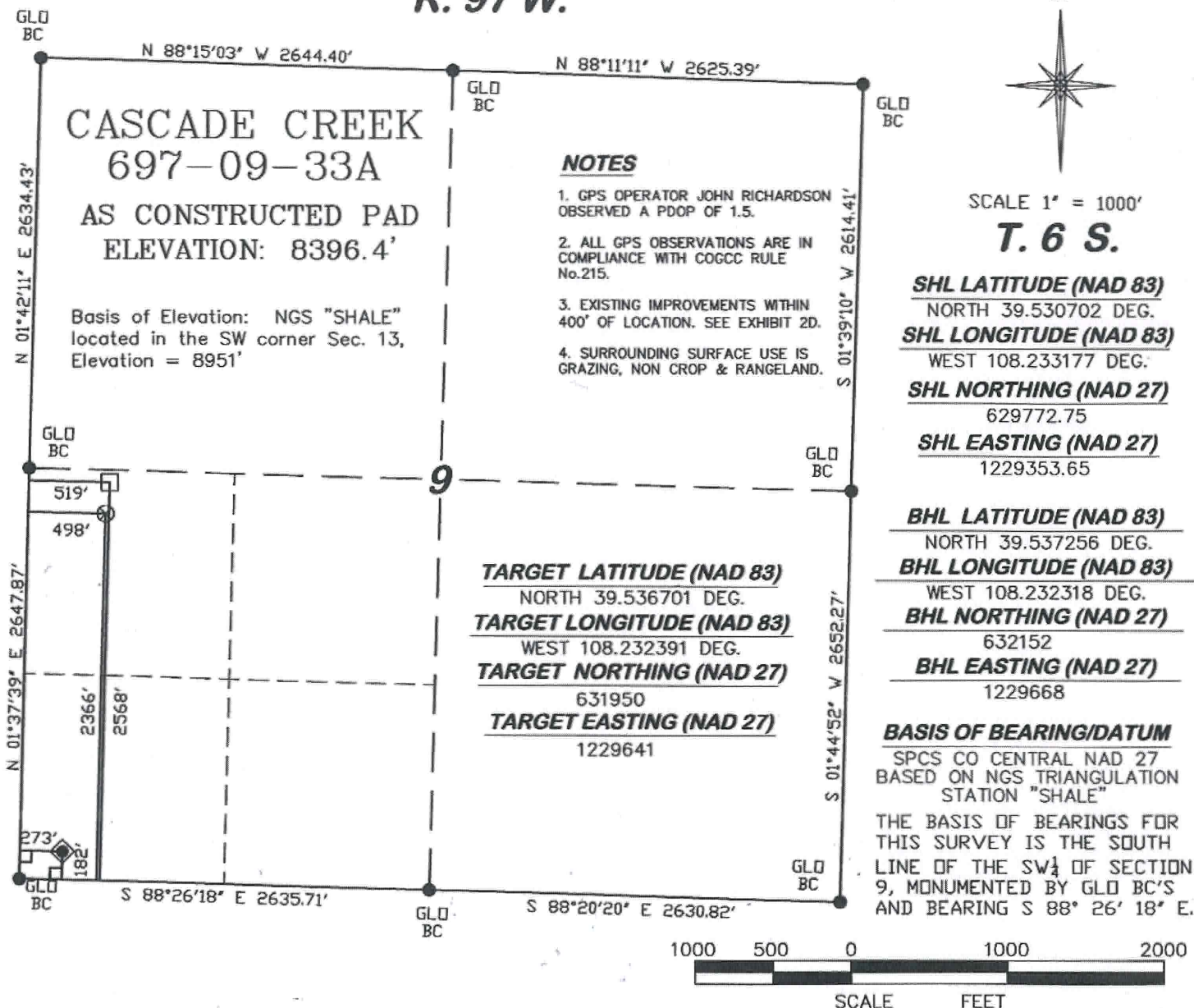


R. 97 W.



NOTES

1. GPS OPERATOR JOHN RICHARDSON OBSERVED A PDOP OF 1.5.
2. ALL GPS OBSERVATIONS ARE IN COMPLIANCE WITH COGCC RULE No.215.
3. EXISTING IMPROVEMENTS WITHIN 400' OF LOCATION. SEE EXHIBIT 2D.
4. SURROUNDING SURFACE USE IS GRAZING, NON CROP & RANGELAND.

SCALE 1" = 1000'

T. 6 S.

SHL LATITUDE (NAD 83)

NORTH 39.530702 DEG.

SHL LONGITUDE (NAD 83)

WEST 108.233177 DEG.

SHL NORTHING (NAD 27)

629772.75

SHL EASTING (NAD 27)

1229353.65

BHL LATITUDE (NAD 83)

NORTH 39.537256 DEG.

BHL LONGITUDE (NAD 83)

WEST 108.232318 DEG.

BHL NORTHING (NAD 27)

632152

BHL EASTING (NAD 27)

1229668

BASIS OF BEARING/DATUM

SPCS CO CENTRAL NAD 27
BASED ON NGS TRIANGULATION
STATION "SHALE"

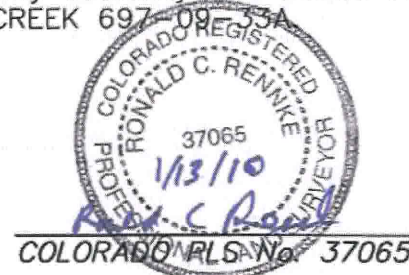
THE BASIS OF BEARINGS FOR
THIS SURVEY IS THE SOUTH
LINE OF THE SW $\frac{1}{4}$ OF SECTION
9, MONUMENTED BY GLD BC'S
AND BEARING S 88° 26' 18" E.

SURVEYOR'S STATEMENT

I, Ronald C. Rennke, an employee and agent for D. R. Griffin & Associates, Inc. state the plat hereon is a correct representation of a survey made under my authority and staked on the ground as shown on December 14, 2009 for the CASCADE CREEK 697-09-33A.

LEGEND

- ◆ WELL LOCATION
- BOTTOM HOLE LOCATION
- ⊗ TARGET LOCATION
- FOUND MONUMENT
- L DENOTES 90° TIE



CC 609-14 PAD



DRG RIFFIN & ASSOCIATES, INC.
1414 ELK ST., ROCK SPRINGS, WY 82901

(307) 382-5028

DRAWN: 1/11/10 - DEH

SCALE: 1" = 1000'

REVISED: N/A

JOB No. 10841

EXHIBIT 1

**PLAT FOR DRILLING LOCATION IN THE
SW $\frac{1}{4}$ OF SW $\frac{1}{4}$ SECTION 9 FOR
OXY USA WTP LP**

**182' F/SL & 273' F/WL, SECTION 9
T. 6 S., R. 97 W., 6th P.M.,
GARFIELD COUNTY, COLORADO**