

TABLE 1
SOIL SAMPLE ANALYTICAL RESULTS
GARDNER 12-19 (API No. 05-123-20114)
WELD COUNTY
PETROLEUM DEVELOPMENT CORPORATION

Sample ID	Depth (ft bgs)	Date Sampled	Benzene (mg/kg)	Toluene (mg/kg)	Ethyl- benzene (mg/kg)	Xylenes (mg/kg)	TPH (mg/kg)
B01	2.5	11/25/2008	NA	NA	NA	NA	<100
B02	2.5	11/25/2008	NA	NA	NA	NA	<100
E01	2.5	11/25/2008	NA	NA	NA	NA	59
E02	2.5	11/26/2008	NA	NA	NA	NA	<100
E03	2.5	11/25/2008	NA	NA	NA	NA	<100
E04	2.5	11/25/2008	NA	NA	NA	NA	540
E05	2.5	11/25/2008	NA	NA	NA	NA	1290
N01	2.5	11/21/2008	NA	NA	NA	NA	<100
N02	2.5	11/25/2008	NA	NA	NA	NA	<100
S01	2.5	11/21/2008	NA	NA	NA	NA	1000
S02	2.5	11/26/2008	NA	NA	NA	NA	<100
W01	2.5	11/21/2008	NA	NA	NA	NA	<100
W02	2.5	11/25/2008	NA	NA	NA	NA	120
W03	2.5	11/26/2008	NA	NA	NA	NA	<100
COGCC Sensitive Area Standard			NS	NS	NS	NS	1000

Notes: < - less than stated laboratory reporting limit
TPH - Total Petroleum Hydrocarbons (C6-C28)
API - American Petroleum Institute

Bold numbers indicate result equalled or exceeded standard.

COGCC Sensitive Area Standard is taken from COGCC Table 910-1, prior to April 1, 2009.

NA - Not Analyzed
NS - No Standard
mg/kg - milligrams per kilogram
ft bgs - feet below ground surface

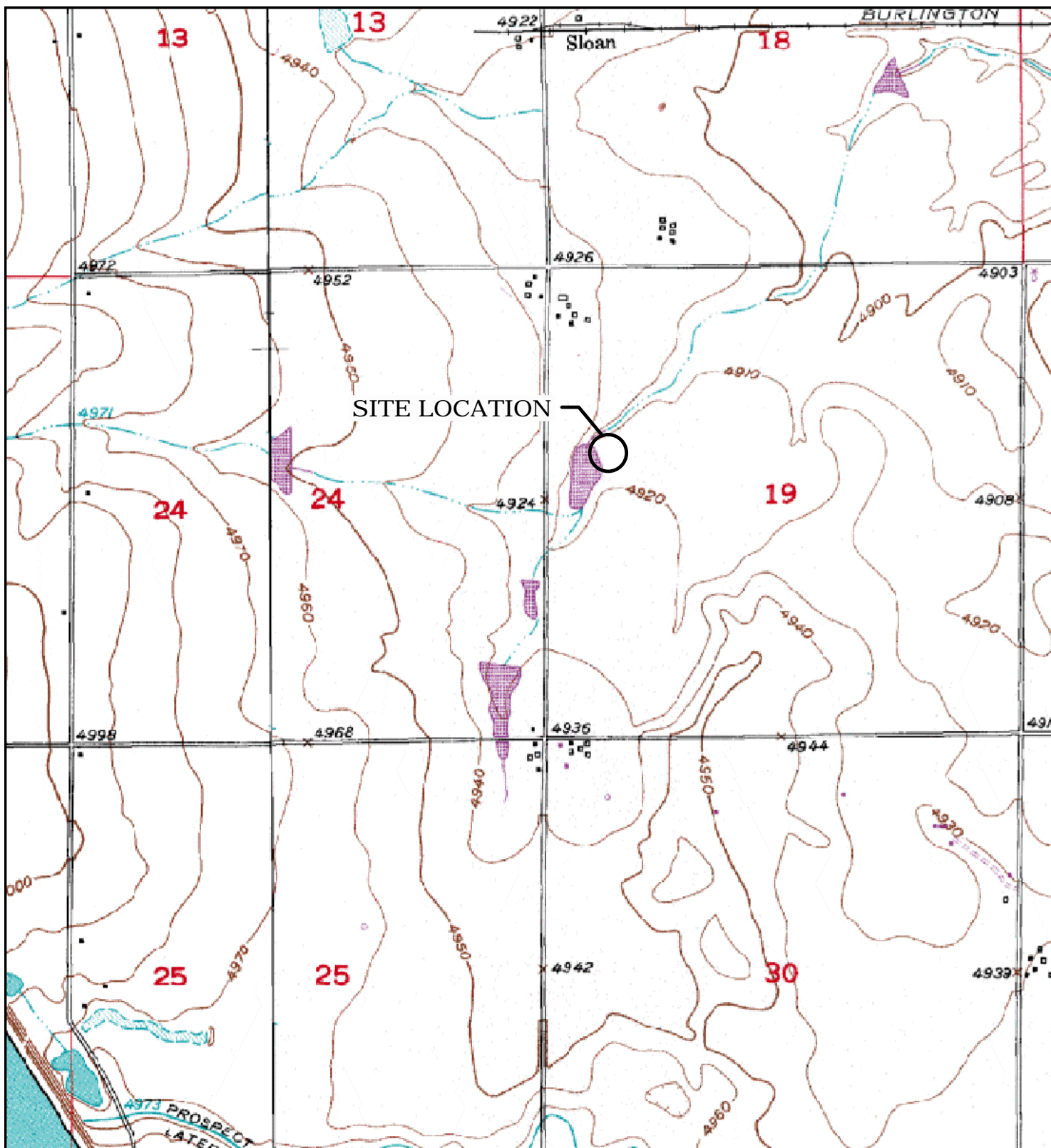


TABLE 2
GROUNDWATER ANALYTICAL AND FIELD PARAMETERS
GARDNER 12-19 (API No. 123-20114)
WELD COUNTY
PETROLEUM DEVELOPMENT CORPORATION

Sample ID	Date Sampled	Benzene (ug/L)	Toluene (ug/L)	Ethyl-benzene (ug/L)	Xylenes (ug/L)	Depth to Water (ft btoc)
GW01	11/25/2008	520	590	160	1300	NM
MW01	01/06/2009	<1.0	<1.0	<1.0	<1.0	6.45
	04/23/2009	<1.0	<1.0	<1.0	<1.0	5.88
	07/22/2009	<1.0	<1.0	<1.0	<1.0	2.89
	12/10/2009	<1.0	<1.0	<1.0	<1.0	5.17
MW02	01/06/2009	<1.0	<1.0	<1.0	<1.0	7.35
	04/23/2009	<1.0	<1.0	<1.0	<1.0	6.75
	07/22/2009	<1.0	<1.0	<1.0	<1.0	5.14
	12/10/2009	<1.0	<1.0	<1.0	<1.0	6.86
MW03	01/06/2009	<1.0	<1.0	<1.0	<1.0	8.47
	04/23/2009	<1.0	<1.0	<1.0	<1.0	7.97
	07/22/2009	<1.0	<1.0	<1.0	<1.0	6.75
	12/10/2009	<1.0	<1.0	<1.0	<1.0	8.12
MW04	01/06/2009	<1.0	<1.0	<1.0	<1.0	7.70
	04/23/2009	<1.0	<1.0	<1.0	<1.0	7.27
	07/22/2009	<1.0	<1.0	<1.0	<1.0	5.73
	12/10/2009	<1.0	<1.0	<1.0	<1.0	7.24
Basic Standards for Groundwater:		5	560	700	1400	

Notes: < - less than ug/L - micrograms per Liter NA - Not Analyzed/Not Available
ft btoc - feet below top of casing NM - Not measured API - American Petroleum Institute
Basic Standards for Groundwater are taken from the Colorado Department of Health and Environment -
Water Quality Control Commission Regulation 41, effective 4/1/2009.
Bold numbers indicate result equaled or exceeded standard.





LEGEND

○ SITE LOCATION



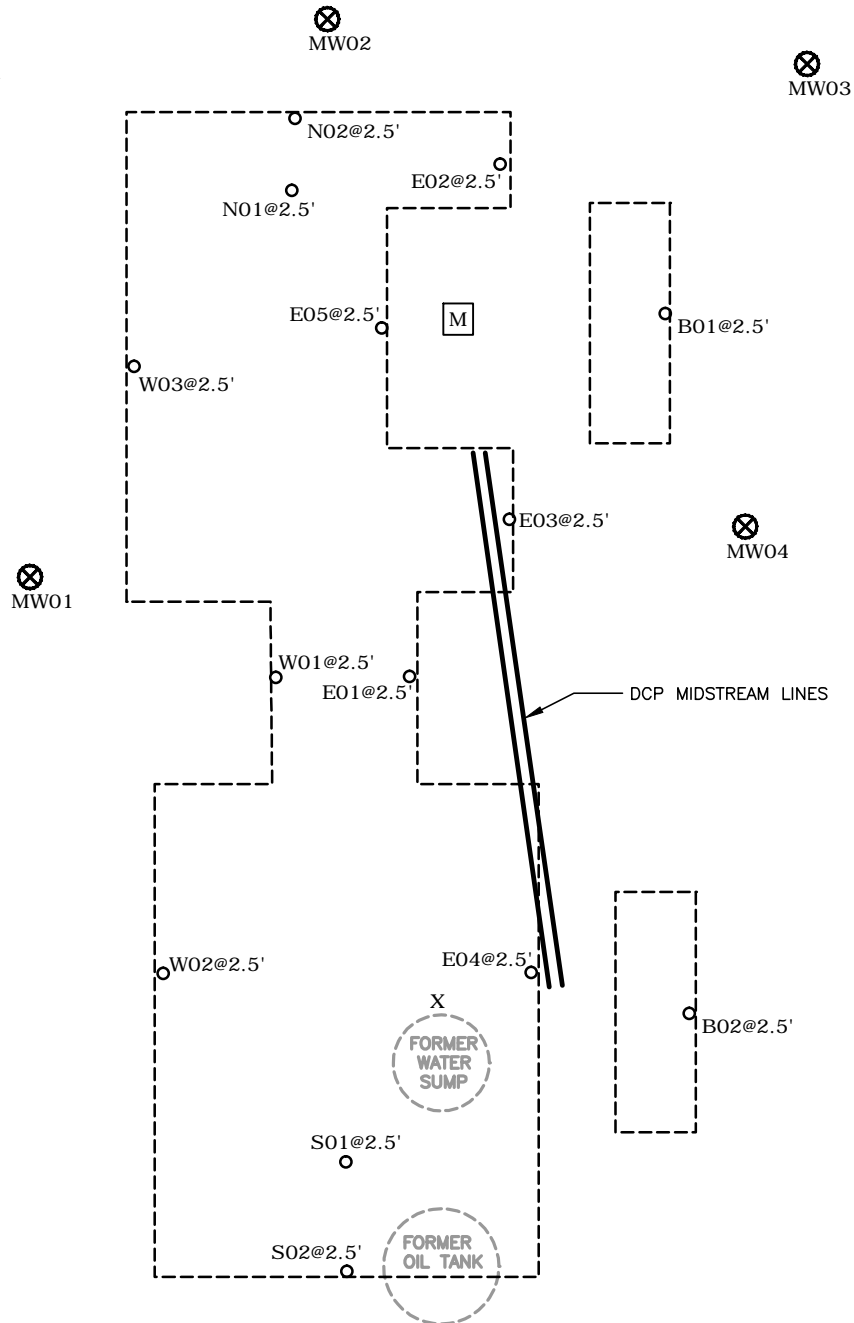
0 375 750 1500
FEET

FIGURE 1
SITE LOCATION MAP
GARDNER 12-19
SWNW 19 1N 63W
WELD COUNTY, CO
PETROLEUM DEVELOPMENT CORPORATION

SOURCE: TOPOZONE.COM
USGS 7.5' QUADRANGLE
(NAD27)



LEASE ROAD



LEGEND

MW01 MONITORING WELL LOCATION

N01@2.5' SOIL SAMPLE LOCATION

METER HOUSE

X RELEASE LOCATION

--- EXTENT OF EXCAVATION

ESTIMATED GROUNDWATER FLOW DIRECTION

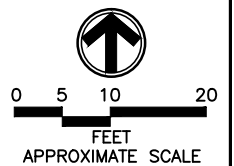


FIGURE 2
SITE MAP
GARDNER 12-19
SWNW 19 1N 63W
WELD COUNTY, CO
PETROLEUM DEVELOPMENT CORPORATION



PDC0817901 2/09