

BM #36L
LOT 12 (NW1/4 SW1/4) OF
SECTION 36, T. 7 S., R. 95 W.
NOBLE ENERGY INC.

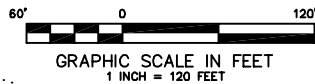


CONSTRUCTION SURVEYS, INC.
0012 SUNRISE BLVD.
SILT, CO 81652
(970)876-5753

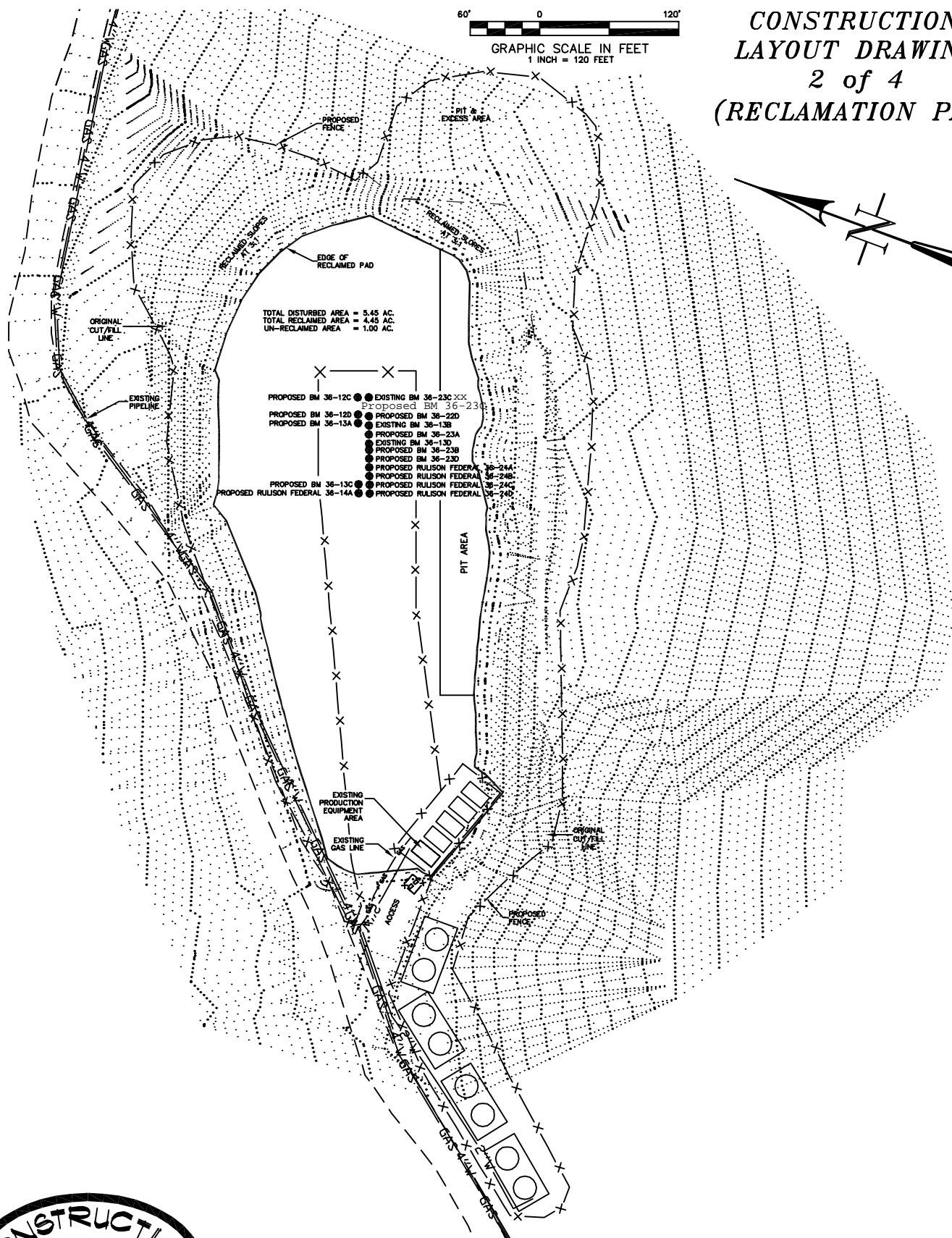
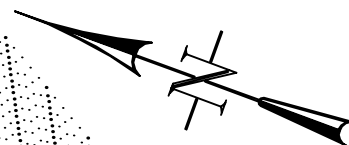
SCALE: 1"

SCALE: 1" = 120'

SHEET: 6 of 10



**CONSTRUCTION
LAYOUT DRAWING
2 of 4
(RECLAMATION PAD)**



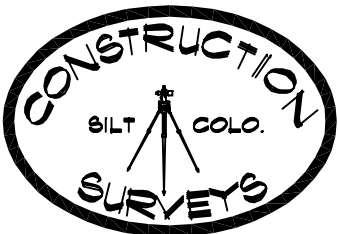
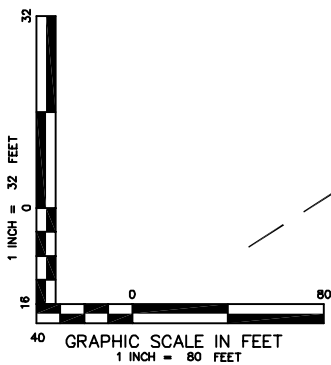
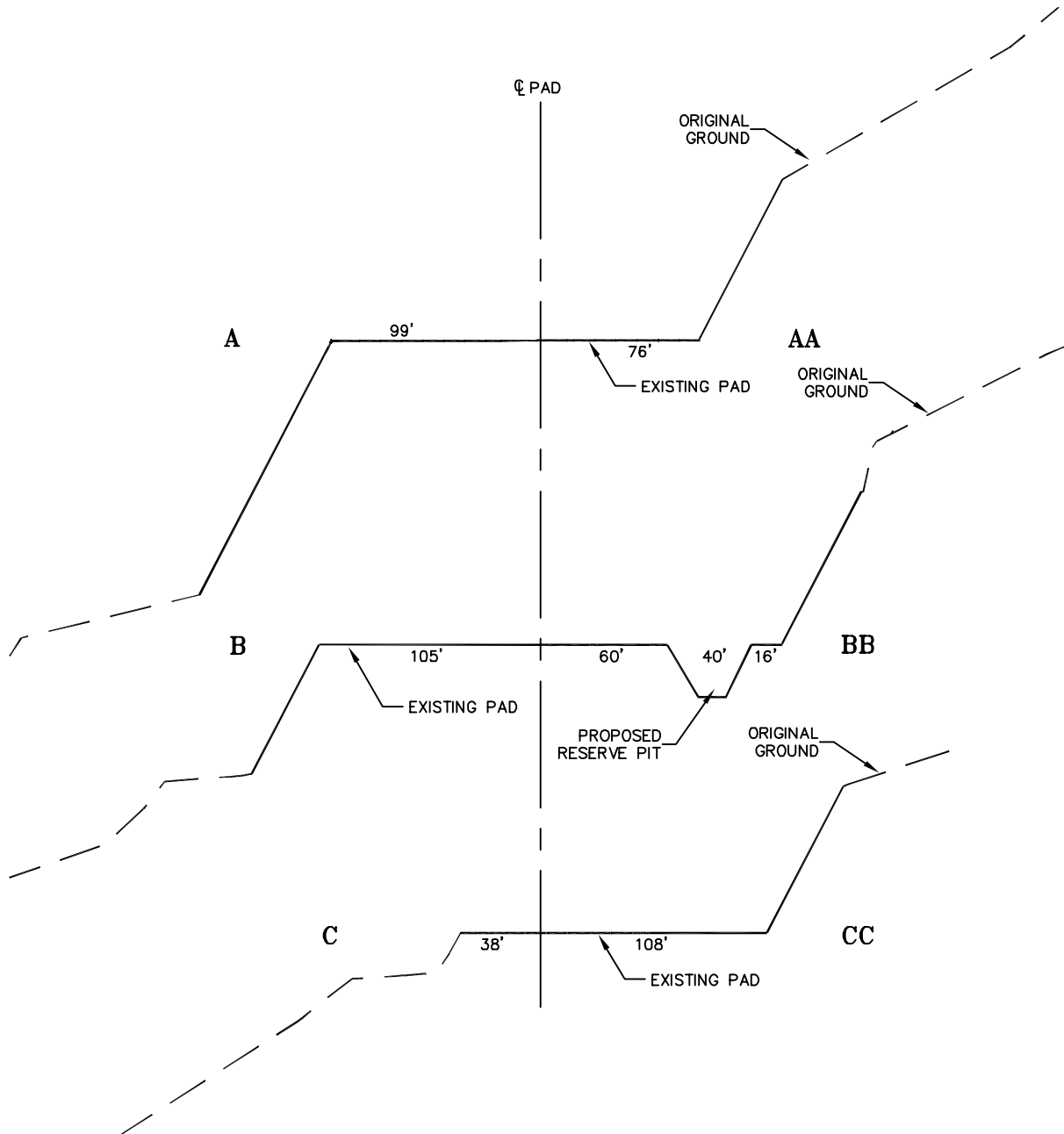
CONSTRUCTION SURVEYS, INC.
0012 SUNRISE BLVD.
SILT, CO 81652
(970)876-5753

BM #36L
LOT 12 (NW1/4 SW1/4) OF
SECTION 36, T. 7 S., R. 95 W.
NOBLE ENERGY INC.

SCALE: 1" = 120'

SHEET: 7 of 10

**CONSTRUCTION
LAYOUT DRAWING
3 of 4
(CROSS SECTIONS
OF PIT & PAD)**



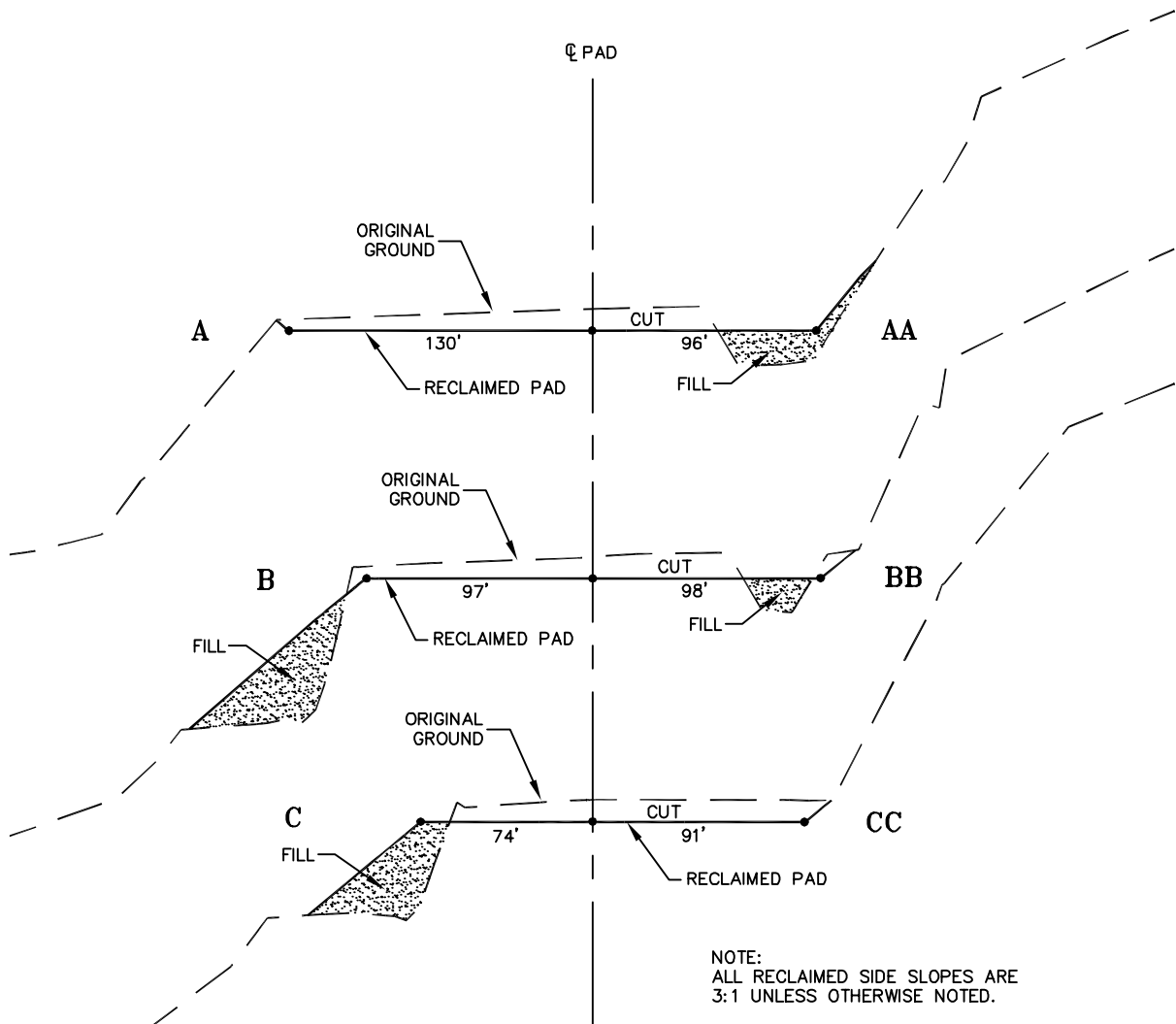
CONSTRUCTION SURVEYS, INC.
0012 SUNRISE BLVD.
SILT, CO 81652
(970)876-5753

BM #36L
LOT 12 (NW1/4 SW1/4) OF
SECTION 36, T. 1 S., R. 95 W.
NOBLE ENERGY INC.

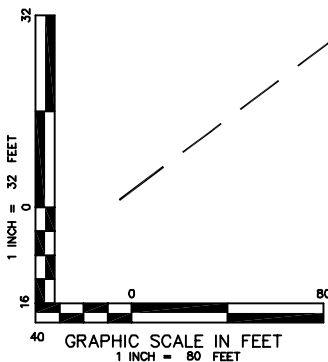
SCALE: AS SHOWN

SHEET: 8 of 10

**CONSTRUCTION
LAYOUT DRAWING
4 of 4
(CROSS SECTIONS OF
FINAL RECLAMATION PAD)**



NOTE:
ALL RECLAIMED SIDE SLOPES ARE
3:1 UNLESS OTHERWISE NOTED.



CONSTRUCTION SURVEYS, INC.
0012 SUNRISE BLVD.
SILT, CO 81652
(970)876-5753

BM #36L
LOT 12 (NW1/4 SW1/4) OF
SECTION 36, T. 7 S., R. 95 W.
NOBLE ENERGY INC.

SCALE: AS SHOWN

SHEET: 9 of 10