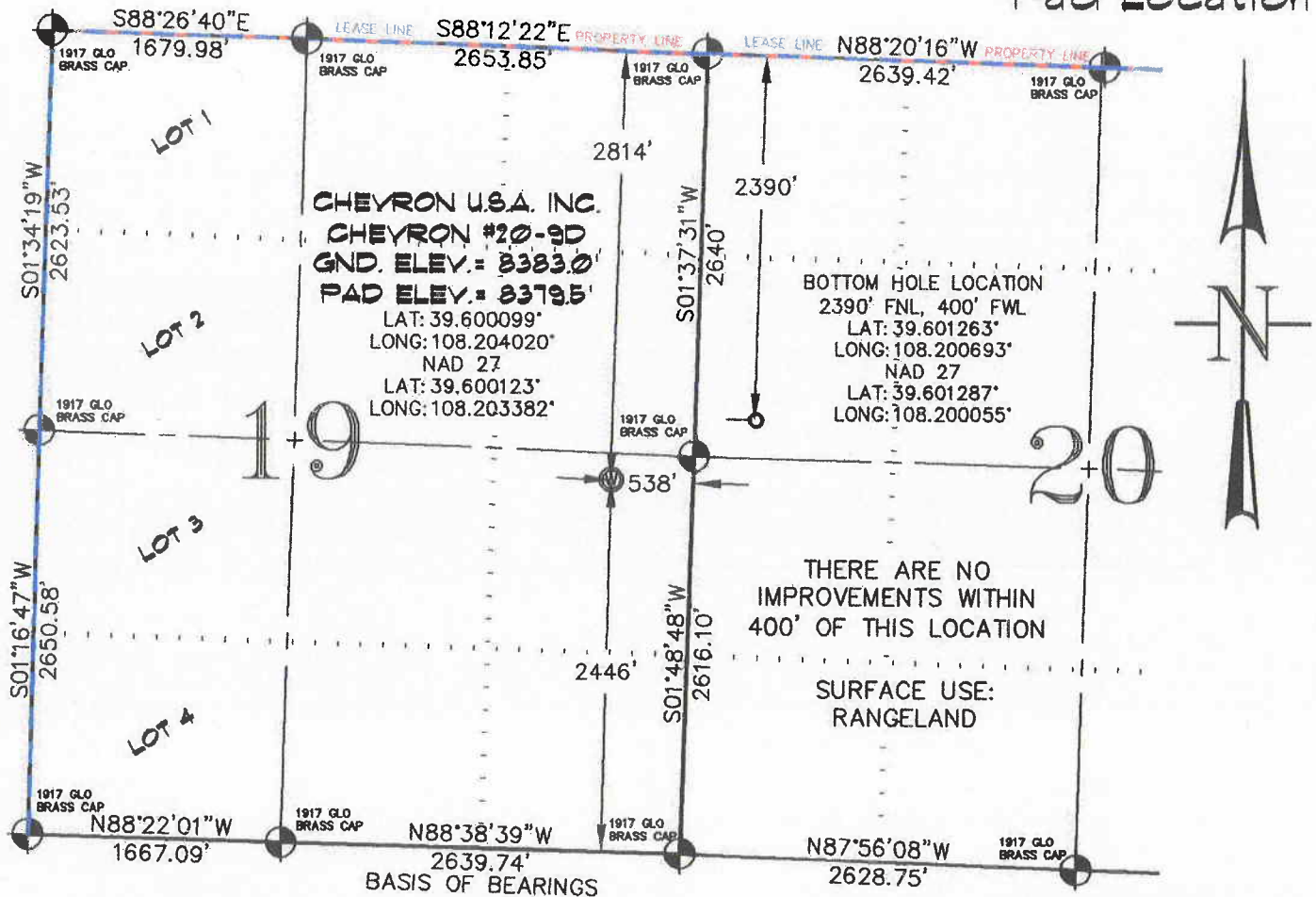


SEC. 19, T. 5 S., R. 96 W. OF THE 6TH P.M. Chevron 1-19-596
Pad Location



-LEGEND-

SECTION CORNER LOCATION
BASED ON GLO RECORD
INFORMATION



FIELD SURVEYED SECTION
CORNER LOCATIONS



FIELD SURVEYED WELL
LOCATION



CALCULATED BOTTOM
HOLE LOCATION

THIS WELL LOCATION PLAT WAS PREPARED FOR BERRY PETROLEUM COMPANY, LLC. TO LOCATE THE CHEVRON #20-9D WELL, 2446 FEET FROM THE SOUTH LINE AND 538 FEET FROM THE EAST LINE IN THE NE1/4 SE1/4 OF SECTION 19, T. 5 S., R. 96 W. OF THE 6TH P.M. GARFIELD COUNTY, COLORADO.

REFERENCE NOTES

- 1) T. 5 S., R. 96 W., 6TH P.M. GLO PLAT.
- 2) U.S.G.S. QUAD: CIRLOE DOT GULCH, CO
- 3) ELEVATIONS BASED ON N.A.V.D. 1988
- 4) LATITUDES AND LONGITUDES ARE BASED ON NAD 83, COLORADO CENTRAL ZONE.
- 5) GPS OPERATOR ROBERT WOOD, OBSERVED A PDOP OF 2.8.
- 6) ALL GPS OBSERVATIONS ARE IN COMPLIANCE WITH COGCC RULE NO. 215.
- 7) SURFACE AND BOTTOM HOLE LOCATIONS ARE MEASURED 90° FROM SECTION LINES.

SURVEYOR'S CERTIFICATE

I, George R. Bauer: a Professional Land Surveyor in the State of Colorado do hereby certify that this Survey was made under my direct supervision, and that this Plat represents said Survey.

George R. Bauer
27925
2/16/10

COLORADO P.L.S. 27925



CONSTRUCTION SURVEYS, INC.
0012 SUNRISE BLVD.
SILT, CO 81652
(970)876-5753

VIEW: 1B

SURVEYED: 03/29/06	SCALE: 1" = 1200'
DRAFTED: 02/12/10	DWG: BERRY\CHEV 119-596
CHECKED: 02/16/10	SHEET: 1 of 11