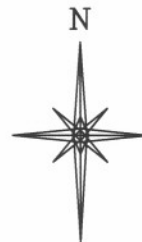


R. 98 W.



SCALE 1" = 1000'

T. 1 S.

NOTES

HIGH PLATEAU DESERT
NO EXISTING FEATURES WITHIN
400' RADIUS OF WELL SITE.

GPS OPERATOR MARK BESSIE
OBSERVED A PDOP OF 2.4.
ALL GPS OBSERVATIONS ARE IN
COMPLIANCE WITH COGCC RULE No.215.

25

FEDERAL RGU

444-24-198

UNGRADED ELEVATION:

6640.6'

BASIS OF ELEVATION: USGS SPOT
ELEVATION LOCATED AT THE NW
CORNER SECTION 25, T1S, R98W,
ELEVATION: 6568'

LATITUDE (NAD 83)

NORTH 39.940965 DEG.

LONGITUDE (NAD 83)

WEST 108.340085 DEG.

LATITUDE (NAD 27)

NORTH 39.940993 DEG.

LONGITUDE (NAD 27)

WEST 108.339440 DEG.

NORTHING

234094.27

EASTING

1203947.55

BASIS OF BEARING/DATUM

SPCS CO NORTH NAD 27
BASED ON NGS TRIANGULATION
STATION "BINER"



SURVEYOR'S STATEMENT

I, CLEMENT R. WILLIAMS, OF ROCK SPRINGS, WYOMING, HEREBY STATE: THIS MAP WAS MADE FROM NOTES TAKEN DURING AN ACTUAL FIELD SURVEY DONE UNDER MY DIRECT SUPERVISION ON OCTOBER 8, 2008 AND THAT THIS PLAT CORRECTLY SHOWS THE LOCATION OF FEDERAL RGU 444-24-198 AS STAKED ON THE GROUND.

LEGEND

- ◆ WELL LOCATION
- BOTTOM HOLE LOC. (APPROX)
- FOUND MONUMENT
- ▲ PREVIOUSLY FOUND MONUMENT

FEDERAL RGU 31-25-198 PAD



RIFFIN & ASSOCIATES, INC.
1414 ELK ST., ROCK SPRINGS, WY 82901

(307) 362-5028

DRAWN: 1/19/10 - MMM

SCALE: 1" = 1000'

REVISED: NA

DRG JOB No. 17148

EXHIBIT 1

**PLAT OF DRILLING LOCATION
FOR
WILLIAMS PRODUCTION RMT COMPANY**
**234' F/NL & 1917' F/EL, SECTION 25,
T. 1 S., R. 98 W., 6th P.M.
RIO BLANCO COUNTY, COLORADO**

R. 98 W.



SCALE 1" = 1000'

T. 1 S.

**FEDERAL RGU
444-24-198
BHL**

NOTES

HIGH PLATEAU DESERT
NO EXISTING FEATURES WITHIN
400' RADIUS OF WELL SITE.

GPS OPERATOR MARK BESSIE
OBSERVED A PDOP OF 2.4.
ALL GPS OBSERVATIONS ARE IN
COMPLIANCE WITH COGCC RULE No.215.

LATITUDE (NAD 83)

NORTH 39.941945 DEG.

LONGITUDE (NAD 83)

WEST 108.335574 DEG.

LATITUDE (NAD 27)

NORTH 39.941973 DEG.

LONGITUDE (NAD 27)

WEST 108.334929 DEG.

NORTHING

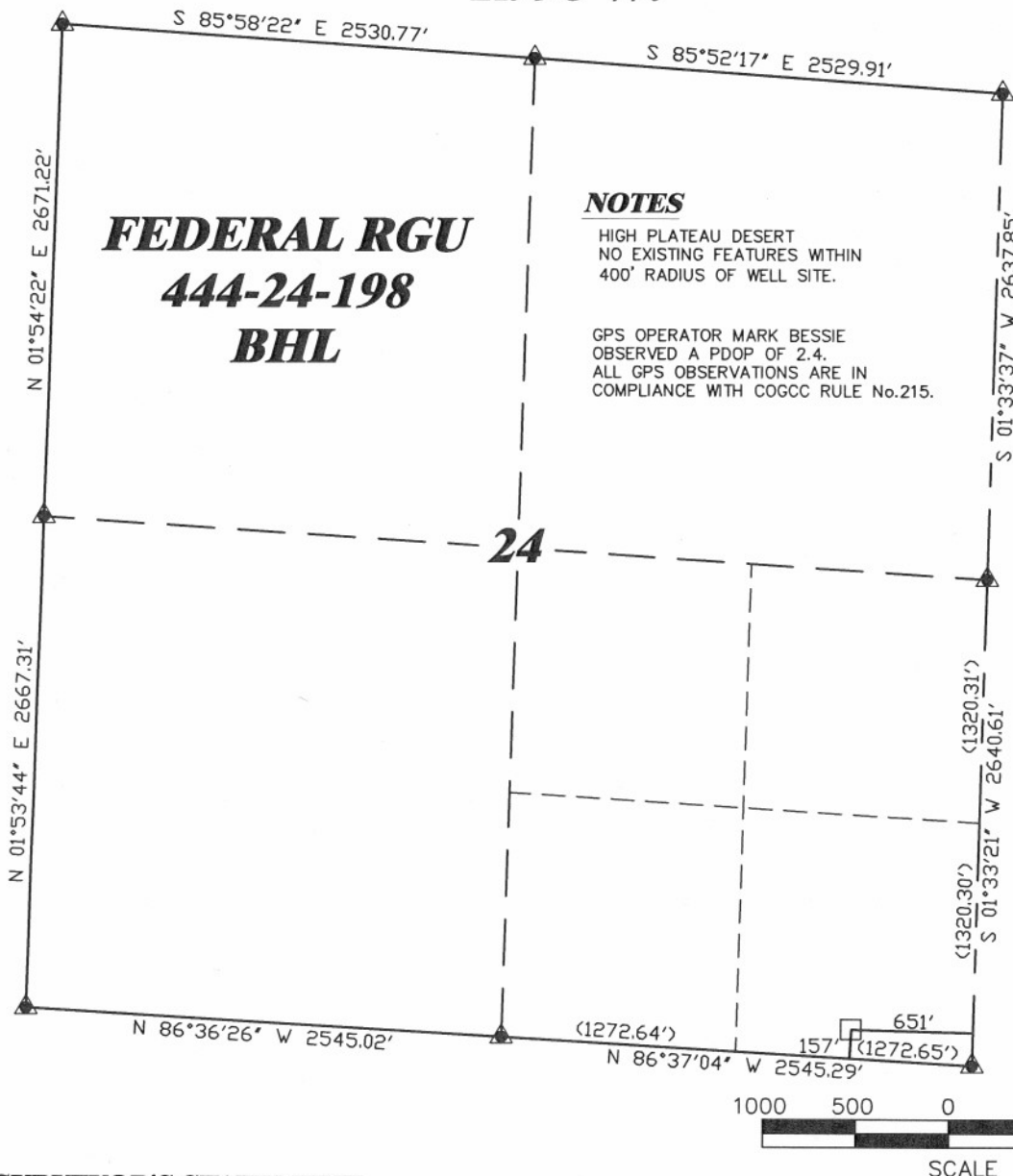
234411

EASTING

1205223

BASIS OF BEARING/DATUM

SPCS CO NORTH NAD 27
BASED ON NGS TRIANGULATION
STATION "BINER"



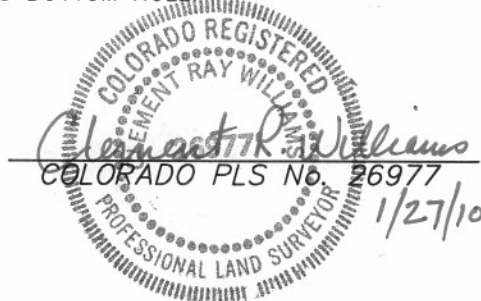
SURVEYOR'S STATEMENT

I, CLEMENT R. WILLIAMS, OF ROCK SPRINGS, WYOMING, HEREBY STATE: THIS MAP WAS MADE FROM NOTES TAKEN DURING AN ACTUAL FIELD SURVEY DONE UNDER MY DIRECT SUPERVISION ON OCTOBER 8, 2008 AND THAT THIS PLAT CORRECTLY SHOWS THE LOCATION OF FEDERAL RGU 444-24-198 BOTTOM HOLE

LEGEND

- ◆ WELL LOCATION
- BOTTOM HOLE LOC. (APPROX)
- FOUND MONUMENT
- ▲ PREVIOUSLY FOUND MONUMENT

FEDERAL RGU 31-25-198 PAD



DRG RIFFIN & ASSOCIATES, INC.
(307) 362-5028 1414 ELK ST., ROCK SPRINGS, WY 82901

DRAWN: 1/19/10 - MMM

SCALE: 1" = 1000'

REVISED: 1/27/10 - MMM

DRG JOB No. 17148

REVISED BHL

EXHIBIT 1

**PLAT OF DRILLING LOCATION
FOR
WILLIAMS PRODUCTION RMT COMPANY**

**157' F/SL & 651' F/EL, SECTION 24,
T. 1 S., R. 98 W., 6th P.M.
RIO BLANCO COUNTY, COLORADO**