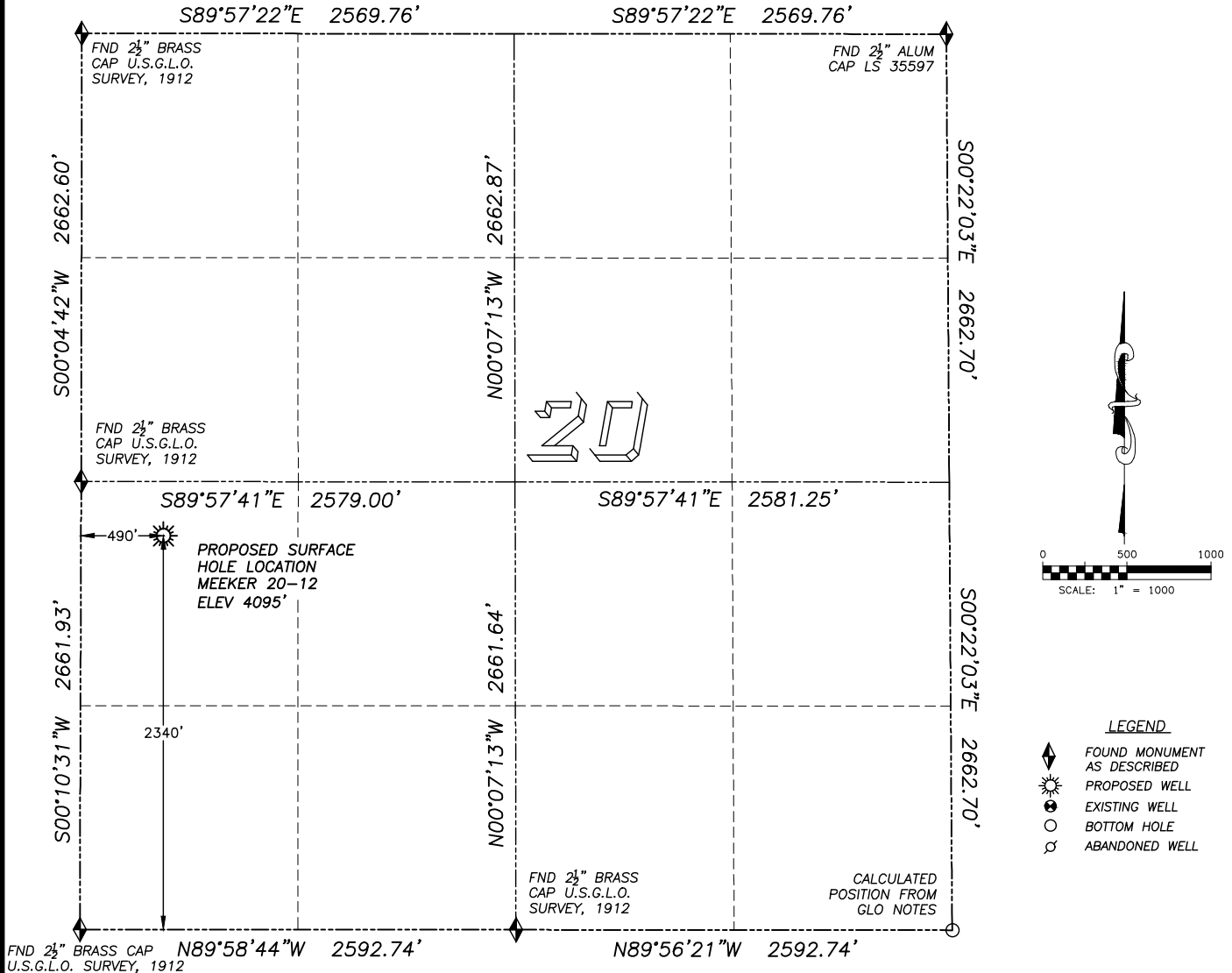


# WELL LOCATION CERTIFICATE

## MEEKER 20-12

SECTION 20, TOWNSHIP 2 SOUTH, RANGE 46 WEST OF THE 6TH PRINCIPAL MERIDIAN



0 500 1000  
SCALE: 1" = 1000

**LEGEND**

- ◆ FOUND MONUMENT AS DESCRIBED
- ☼ PROPOSED WELL
- ⊙ EXISTING WELL
- BOTTOM HOLE
- ⊘ ABANDONED WELL

**NAD 83 LATITUDE AND LONGITUDE****MEEKER 20-12 SURFACE HOLE:**

LATITUDE: N39.86715°  
LONGITUDE: W102.55607°  
ELEVATION: 4095'  
PDOP: 2.3  
2340' FSL, 490' FWL

**NEAREST EXISTING WELL:**

MASSIVE 19-9

LATITUDE: N39.86636°  
LONGITUDE: W102.56045°  
ELEVATION: 4124'  
PDOP: 1.3  
1262' SW  
2055' FSL, 737' FEL SECTION 19

**QUARTER/QUARTER:** NW4/SW4

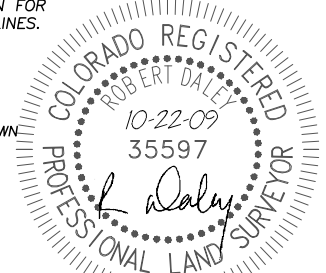
IN ACCORDANCE WITH A REQUEST FROM JIM MCKINNEY OF McELVAIN OIL & GAS PROPERTIES INC., DALEY LAND SURVEYING, INC. HAS DETERMINED THE SURFACE LOCATION OF THE MEEKER 20-12 WELL TO BE 2340' FSL, 490' FWL, AS MEASURED AT NINETY (90) DEGREES FROM THE SECTION LINES OF SECTION 20, TOWNSHIP 2 SOUTH, RANGE 46 WEST OF THE 6TH PRINCIPAL MERIDIAN, YUMA COUNTY COLORADO.

I HEREBY CERTIFY THAT THIS WELL LOCATION CERTIFICATE WAS PREPARED BY ME OR UNDER MY DIRECT SUPERVISION, THAT THE WORK WAS COMPLETED ON 10/16/2009 FOR AND ON BEHALF OF McELVAIN OIL & GAS PROPERTIES INC., AND THAT THIS MAP DOES NOT REPRESENT A BOUNDARY SURVEY, IT IS NOT A LAND SURVEY PLAT OR AN IMPROVEMENT SURVEY PLAT AND IT IS NOT TO BE RELIED UPON FOR THE ESTABLISHMENT OF FENCE, BUILDING OR OTHER FUTURE IMPROVEMENT LINES.

**NOTES:**

- 1) BASIS OF BEARING FOR THIS MAP IS ASSUMED AND BASED UPON GPS OBSERVATIONS MADE BETWEEN MONUMENTS LOCATED AT THE NORTHWEST AND WEST QUARTER CORNER OF SECTION 20, T.2S., R.46W., AND ALL BEARINGS SHOWN HERON ARE RELATIVE THERETO.
- 2) HORIZONTAL DATUM IS NAD83.
- 3) VERTICAL DATUM IS NAVD88. ELEVATIONS ARE DERIVED FROM GPS-RTK OBSERVATIONS PROCESSED THROUGH OPUS, UTILIZING THE GEOID03 MODEL.
- 4) SEE VISIBLE IMPROVEMENTS EXHIBIT FOR VISIBLE IMPROVEMENTS WITHIN 400' OF PROPOSED SURFACE HOLE LOCATION
- 5) SURFACE USE: OPEN RANGE

NOTICE: According to Colorado law you MUST commence any legal action based upon any defect in this W.L.C. within three years after you first discover such defect. In no event may any action based upon any such defect in this W.L.C. be commenced more than ten years from the date of the certification shown heron.



FOR AND/OR ON BEHALF OF  
DALEY LAND SURVEYING INC.,  
Robert Daley, PLS 35597