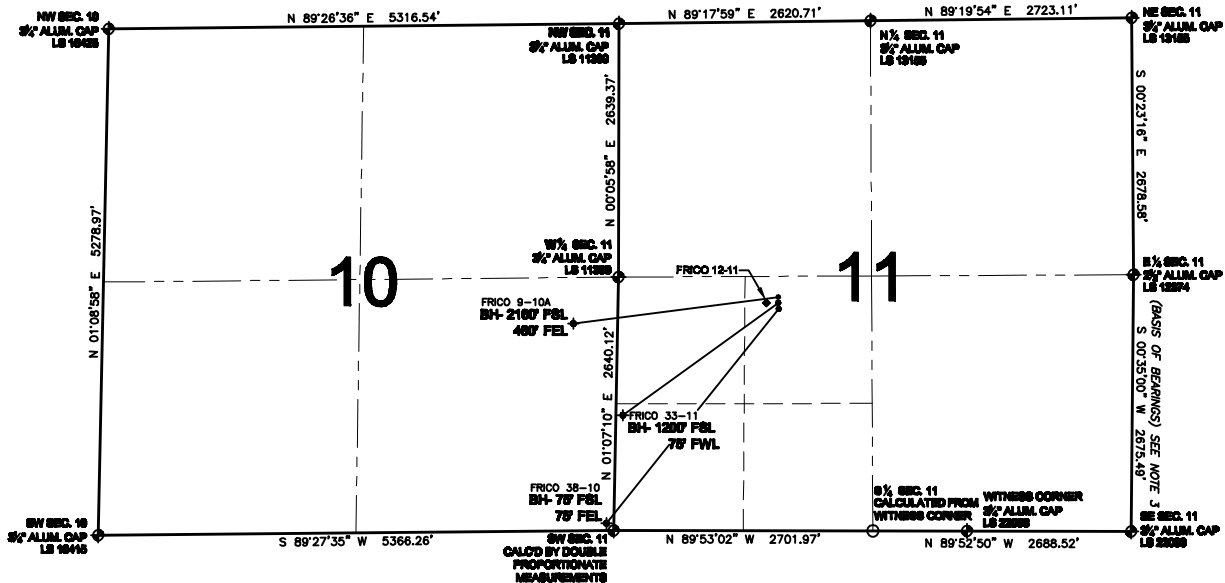


PAD DRAWING - FRICO 3 PAD

SECTION 11, TOWNSHIP 3 NORTH, RANGE 65 WEST, 6TH P.M.



NOTES:

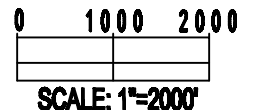
1. THIS SURVEY WAS DONE BY GPS METHODS AND CONFORMS TO THE MINIMUM STANDARDS SET BY THE C.O.G.C.C., RULE NO. 215 (PDOP VALUE IS LESS THAN 6.0, LATITUDE AND LONGITUDE ARE ACCURATE TO 5 DECIMAL PLACES, AND GPS OBSERVATIONS ARE DIFFERENTIAL AND DONE BY QUALIFIED PERSONNEL.)
2. ELEVATIONS SHOWN AT THE WELL HEAD, AS WELL AS HORIZONTAL CONTROL, ARE BASED ON GPS-RTK VALUES DERIVED FROM DOING 2-HOUR STATIC GPS SESSIONS AND REDUCTIONS USING O.P.U.S. SOLUTIONS.
VERTICAL = NAVD88; HORIZONTAL = NAD83/82
3. THE BEARINGS SHOWN HEREON ARE BASED ON GPS OBSERVATIONS BETWEEN THE MONUMENTS SHOWN HEREON AS FOUND ON THE FIELD DATE BELOW.
4. DISTANCES SHOWN ARE AT GROUND LEVEL, AS MEASURED IN THE FIELD, WITH TIES TO WELLS MEASURED AT A PERPENDICULAR TO SECTION LINES.


LEGEND

- = EXISTING MONUMENT
 = BOTTOM HOLE
 BH= BOTTOM HOLE
 = PROPOSED WELL
 = EXISTING WELL

NOTES:

FRICO 38-10 TO BE AT 2311' FSL, 1675' FWL
 BOTTOM HOLE AT 75' FSL & 75' FEL
 FRICO 33-11 TO BE AT 2327' FSL, 1676' FWL
 BOTTOM HOLE AT 1200' FSL & 75' FWL
 FRICO 9-10A TO BE AT 2343' FSL, 1676' FWL
 BOTTOM HOLE AT 2160' FSL & 460' FEL
 FRICO 12-11 IS 2326' FSL, 1630' FWL



REVISIONS		PREPARED BY:
INITIAL	DATE	
		 Petroleum Field Services, LLC 1801 W. 13th Ave. Denver, CO 80204

KERR-MCGEE OIL & GAS ONSHORE LP

FIELD DATE: 01-25-10	PAD NAME: FRICO 3 PAD
DRAWING DATE: 01-26-10	SURFACE LOCATION:
BY: SMF	WELD COUNTY, COLORADO NE 1/4 SW 1/4, SEC. 11, T3N, R65W