

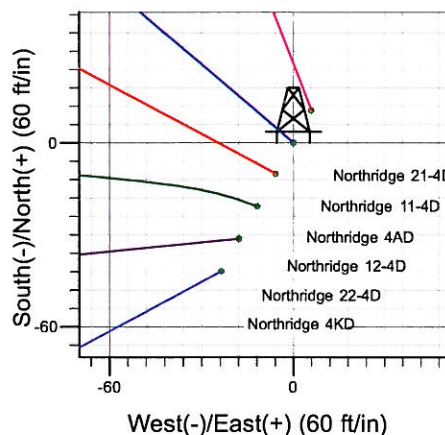
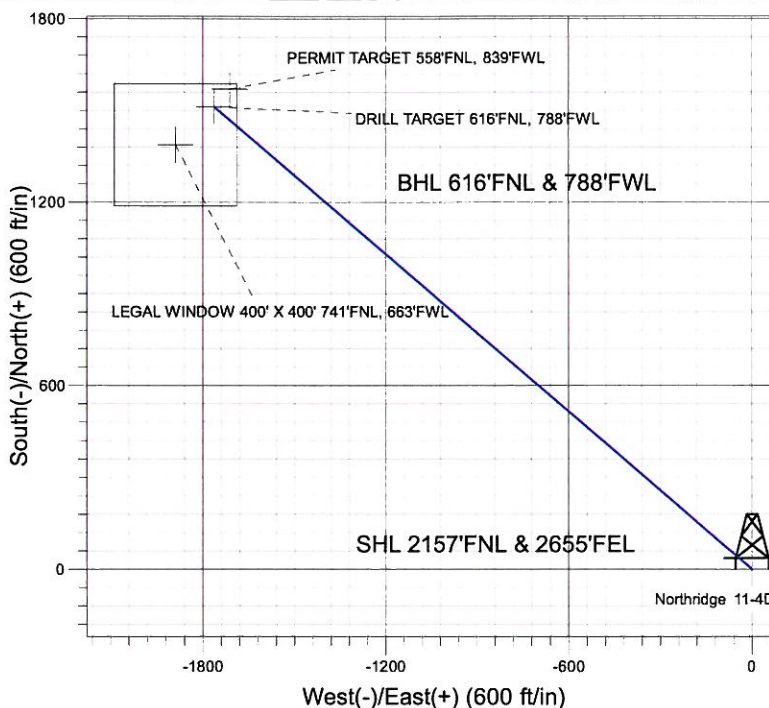
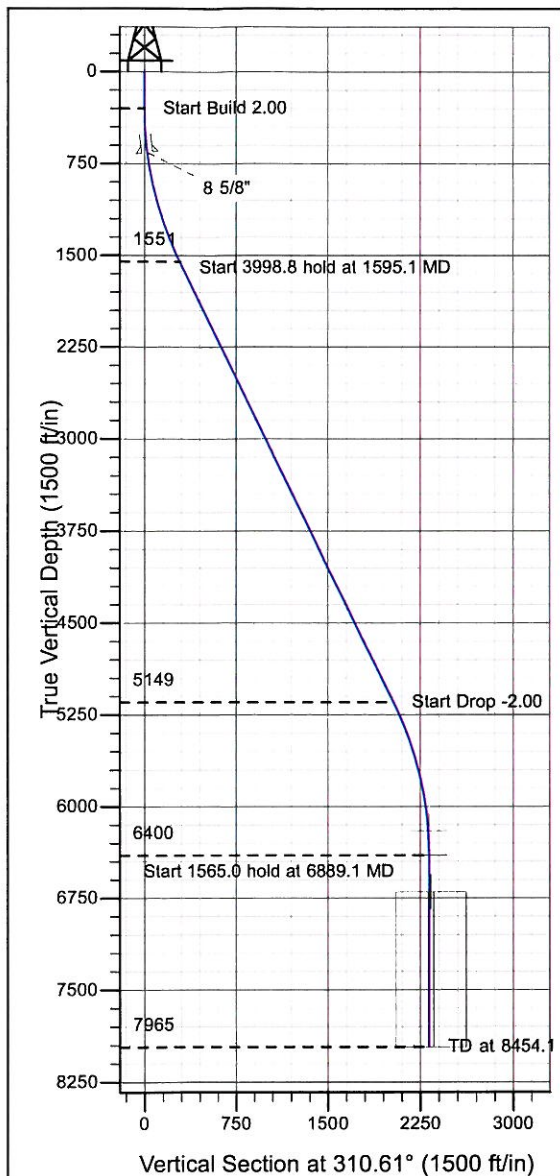
ENSIGN

Directional

Well Name: Northridge 11-4D

Surface Location: Northridge Pad Sec.4-T5N-R66W
 North American Datum 1983 , US State Plane 1983 , Colorado Northern Zone
 Ground Elevation: 4740.0
 +N/-S+E/-W Northing Easting Latitude Longitude Slot
 0.0 0.0 1400826.02 3199468.48 40° 25' 53.245 N 104° 47' 0.463 W
 Original Well Elev WELL @ 4753.0ft (Original Well Elev)

Synergy Resources



Northridge Pad Sec.4-T5N-R66W
 Northridge 11-4D
 Plan #3 (1-12-10)
 16:24, January 13 2010



Azimuths to True North
 Magnetic North: 9.21°
 Magnetic Field
 Strength: 53449.9nT
 Dip Angle: 67.17°
 Date: 9/26/2008
 Model: IGRF200510

WELLBORE TARGET DETAILS (LAT/LONG)

Name	TVD	+N/-S	+E/-W	Latitude	Longitude	Shape
PERMIT TARGET 558'FNL, 839'FWL	6200.0	1569.8	-1712.0	40° 26' 8.757 N	104° 47' 22.603 W	Point
DRILL TARGET 616'FNL, 788'FWL	6400.0	1511.8	-1763.0	40° 26' 8.183 N	104° 47' 23.263 W	Point
LEGAL WINDOW 400' X 400' 741'FNL, 663'FWL	6700.0	1386.8	-1888.0	40° 26' 6.948 N	104° 47' 24.879 W	Rectangle (Sides: L400.0 W400.0)

SECTION DETAILS

Sec	MD	Inc	Azi	TVD	+N/-S	+E/-W	DLeg	TFace	VSec	Target
1	0.0	0.00	0.00	0.0	0.0	0.0	0.00	0.00	0.0	
2	300.0	0.00	0.00	300.0	0.0	0.0	0.00	0.00	0.0	
3	1595.1	25.90	310.61	1551.5	187.3	-218.5	2.00	310.61	287.8	
4	5593.9	25.90	310.61	5148.5	1324.5	-1544.5	0.00	0.00	2034.6	
5	6889.1	0.00	0.00	6400.0	1511.8	-1763.0	2.00	180.00	2322.4	DRILL TARGET 616'FNL, 788'FWL
6	8454.1	0.00	0.00	7965.0	1511.8	-1763.0	0.00	0.00	2322.4	



Directional

Synergy Resources

SEC.4-T5N-R66W

Northridge Pad Sec.4-T5N-R66W

Northridge 11-4D

Wellbore #1

Plan: Plan #3 (1-12-10)

Standard Planning Report

13 January, 2010

Database:	EDM den0-adp01 Server Data	Local Co-ordinate Reference:	Well Northridge 11-4D
Company:	Synergy Resources	TVD Reference:	WELL @ 4753.0ft (Original Well Elev)
Project:	SEC.4-T5N-R66W	MD Reference:	WELL @ 4753.0ft (Original Well Elev)
Site:	Northridge Pad Sec.4-T5N-R66W	North Reference:	True
Well:	Northridge 11-4D	Survey Calculation Method:	Minimum Curvature
Wellbore:	Wellbore #1		
Design:	Plan #3 (1-12-10)		

Project	SEC.4-T5N-R66W, Weld County, Colorado		
Map System:	US State Plane 1983	System Datum:	Mean Sea Level
Geo Datum:	North American Datum 1983		Using Well Reference Point
Map Zone:	Colorado Northern Zone		Using geodetic scale factor

Site		Northridge Pad Sec.4-T5N-R66W			
Site Position:		Northing:	1,400,867.38 ft	Latitude:	40° 25' 53.652 N
From:	Lat/Long	Easting:	3,199,490.98 ft	Longitude:	104° 47' 0.168 W
Position Uncertainty:	0.0 ft	Slot Radius:	"	Grid Convergence:	0.46 °

Well	Northridge 11-4D					
Well Position	+N/-S	-41.2 ft	Northing:	1,400,826.02 ft	Latitude:	40° 25' 53.245 N
	+E/-W	-22.8 ft	Easting:	3,199,468.48 ft	Longitude:	104° 47' 0.463 W
Position Uncertainty		0.0 ft	Wellhead Elevation:	ft	Ground Level:	4,740.0 ft

Wellbore	Wellbore #1				
Magnetics	Model Name	Sample Date	Declination (°)	Dip Angle (°)	Field Strength (nT)
	IGRF200510	9/26/2008	9.21	67.17	53,450

Design	Plan #3 (1-12-10)			
Audit Notes:				
Version:	Phase:	PROTOTYPE	Tie On Depth:	0.0
Vertical Section:	Depth From (TVD) (ft)	+N/-S (ft)	+E/-W (ft)	Direction (°)
	0.0	0.0	0.0	310.61

Plan Sections										
Measured Depth (ft)	Inclination (°)	Azimuth (°)	Vertical Depth (ft)	+N/-S (ft)	+E/-W (ft)	Dogleg Rate (°/100ft)	Build Rate (°/100ft)	Turn Rate (°/100ft)	TFO (°)	Target
0.0	0.00	0.00	0.0	0.0	0.0	0.00	0.00	0.00	0.00	
300.0	0.00	0.00	300.0	0.0	0.0	0.00	0.00	0.00	0.00	
1,595.1	25.90	310.61	1,551.5	187.3	-218.5	2.00	2.00	0.00	310.61	
5,593.9	25.90	310.61	5,148.5	1,324.5	-1,544.5	0.00	0.00	0.00	0.00	
6,889.1	0.00	0.00	6,400.0	1,511.8	-1,763.0	2.00	-2.00	0.00	180.00	DRILL TARGET 61
8,454.1	0.00	0.00	7,965.0	1,511.8	-1,763.0	0.00	0.00	0.00	0.00	

Database:	EDM den0-adp01 Server Data	Local Co-ordinate Reference:	Well Northridge 11-4D
Company:	Synergy Resources	TVD Reference:	WELL @ 4753.0ft (Original Well Elev)
Project:	SEC.4-T5N-R66W	MD Reference:	WELL @ 4753.0ft (Original Well Elev)
Site:	Northridge Pad Sec.4-T5N-R66W	North Reference:	True
Well:	Northridge 11-4D	Survey Calculation Method:	Minimum Curvature
Wellbore:	Wellbore #1		
Design:	Plan #3 (1-12-10)		

Planned Survey									
Measured Depth (ft)	Inclination (°)	Azimuth (°)	Vertical Depth (ft)	+N/-S (ft)	+E/-W (ft)	Vertical Section (ft)	Dogleg Rate (°/100ft)	Build Rate (°/100ft)	Turn Rate (°/100ft)
0.0	0.00	0.00	0.0	0.0	0.0	0.0	0.00	0.00	0.00
40.0	0.00	0.00	40.0	0.0	0.0	0.0	0.00	0.00	0.00
80.0	0.00	0.00	80.0	0.0	0.0	0.0	0.00	0.00	0.00
120.0	0.00	0.00	120.0	0.0	0.0	0.0	0.00	0.00	0.00
160.0	0.00	0.00	160.0	0.0	0.0	0.0	0.00	0.00	0.00
200.0	0.00	0.00	200.0	0.0	0.0	0.0	0.00	0.00	0.00
240.0	0.00	0.00	240.0	0.0	0.0	0.0	0.00	0.00	0.00
280.0	0.00	0.00	280.0	0.0	0.0	0.0	0.00	0.00	0.00
300.0	0.00	0.00	300.0	0.0	0.0	0.0	0.00	0.00	0.00
320.0	0.40	310.61	320.0	0.0	-0.1	0.1	2.00	2.00	0.00
360.0	1.20	310.61	360.0	0.4	-0.5	0.6	2.00	2.00	0.00
400.0	2.00	310.61	400.0	1.1	-1.3	1.7	2.00	2.00	0.00
440.0	2.80	310.61	439.9	2.2	-2.6	3.4	2.00	2.00	0.00
480.0	3.60	310.61	479.9	3.7	-4.3	5.7	2.00	2.00	0.00
520.0	4.40	310.61	519.8	5.5	-6.4	8.4	2.00	2.00	0.00
560.0	5.20	310.61	559.6	7.7	-9.0	11.8	2.00	2.00	0.00
600.0	6.00	310.61	599.5	10.2	-11.9	15.7	2.00	2.00	0.00
640.0	6.80	310.61	639.2	13.1	-15.3	20.2	2.00	2.00	0.00
661.0	7.22	310.61	660.0	14.8	-17.2	22.7	2.00	2.00	0.00
8 5/8"									
680.0	7.60	310.61	678.9	16.4	-19.1	25.2	2.00	2.00	0.00
720.0	8.40	310.61	718.5	20.0	-23.3	30.7	2.00	2.00	0.00
760.0	9.20	310.61	758.0	24.0	-28.0	36.9	2.00	2.00	0.00
800.0	10.00	310.61	797.5	28.3	-33.0	43.5	2.00	2.00	0.00
840.0	10.80	310.61	836.8	33.0	-38.5	50.7	2.00	2.00	0.00
880.0	11.60	310.61	876.0	38.1	-44.4	58.5	2.00	2.00	0.00
920.0	12.40	310.61	915.2	43.5	-50.7	66.8	2.00	2.00	0.00
960.0	13.20	310.61	954.2	49.3	-57.5	75.7	2.00	2.00	0.00
1,000.0	14.00	310.61	993.1	55.4	-64.6	85.1	2.00	2.00	0.00
1,040.0	14.80	310.61	1,031.8	61.9	-72.1	95.0	2.00	2.00	0.00
1,080.0	15.60	310.61	1,070.4	68.7	-80.1	105.5	2.00	2.00	0.00
1,120.0	16.40	310.61	1,108.8	75.9	-88.5	116.6	2.00	2.00	0.00
1,160.0	17.20	310.61	1,147.1	83.4	-97.3	128.1	2.00	2.00	0.00
1,200.0	18.00	310.61	1,185.3	91.3	-106.4	140.2	2.00	2.00	0.00
1,240.0	18.80	310.61	1,223.2	99.5	-116.0	152.8	2.00	2.00	0.00
1,280.0	19.60	310.61	1,261.0	108.1	-126.0	166.0	2.00	2.00	0.00
1,320.0	20.40	310.61	1,298.6	117.0	-136.4	179.7	2.00	2.00	0.00
1,360.0	21.20	310.61	1,336.0	126.2	-147.2	193.9	2.00	2.00	0.00
1,400.0	22.00	310.61	1,373.2	135.8	-158.4	208.6	2.00	2.00	0.00
1,440.0	22.80	310.61	1,410.2	145.7	-169.9	223.8	2.00	2.00	0.00
1,480.0	23.60	310.61	1,446.9	156.0	-181.9	239.6	2.00	2.00	0.00
1,520.0	24.40	310.61	1,483.5	166.6	-194.2	255.9	2.00	2.00	0.00
1,560.0	25.20	310.61	1,519.8	177.5	-207.0	272.6	2.00	2.00	0.00
1,595.1	25.90	310.61	1,551.5	187.3	-218.5	287.8	2.00	2.00	0.00
1,600.0	25.90	310.61	1,555.8	188.7	-220.1	289.9	0.00	0.00	0.00
1,640.0	25.90	310.61	1,591.8	200.1	-233.4	307.4	0.00	0.00	0.00
1,680.0	25.90	310.61	1,627.8	211.5	-246.6	324.9	0.00	0.00	0.00
1,720.0	25.90	310.61	1,663.8	222.9	-259.9	342.4	0.00	0.00	0.00
1,760.0	25.90	310.61	1,699.8	234.2	-273.1	359.8	0.00	0.00	0.00
1,800.0	25.90	310.61	1,735.8	245.6	-286.4	377.3	0.00	0.00	0.00
1,840.0	25.90	310.61	1,771.7	257.0	-299.7	394.8	0.00	0.00	0.00
1,880.0	25.90	310.61	1,807.7	268.4	-312.9	412.2	0.00	0.00	0.00
1,920.0	25.90	310.61	1,843.7	279.7	-326.2	429.7	0.00	0.00	0.00
1,960.0	25.90	310.61	1,879.7	291.1	-339.5	447.2	0.00	0.00	0.00

Database:	EDM den0-adp01 Server Data	Local Co-ordinate Reference:	Well Northridge 11-4D
Company:	Synergy Resources	TVD Reference:	WELL @ 4753.0ft (Original Well Elev)
Project:	SEC.4-T5N-R66W	MD Reference:	WELL @ 4753.0ft (Original Well Elev)
Site:	Northridge Pad Sec.4-T5N-R66W	North Reference:	True
Well:	Northridge 11-4D	Survey Calculation Method:	Minimum Curvature
Wellbore:	Wellbore #1		
Design:	Plan #3 (1-12-10)		

Planned Survey									
Measured Depth (ft)	Inclination (°)	Azimuth (°)	Vertical Depth (ft)	+N/-S (ft)	+E/-W (ft)	Vertical Section (ft)	Dogleg Rate (°/100ft)	Build Rate (°/100ft)	Turn Rate (°/100ft)
2,000.0	25.90	310.61	1,915.7	302.5	-352.7	464.7	0.00	0.00	0.00
2,040.0	25.90	310.61	1,951.6	313.9	-366.0	482.1	0.00	0.00	0.00
2,080.0	25.90	310.61	1,987.6	325.2	-379.3	499.6	0.00	0.00	0.00
2,120.0	25.90	310.61	2,023.6	336.6	-392.5	517.1	0.00	0.00	0.00
2,160.0	25.90	310.61	2,059.6	348.0	-405.8	534.6	0.00	0.00	0.00
2,200.0	25.90	310.61	2,095.6	359.3	-419.1	552.0	0.00	0.00	0.00
2,240.0	25.90	310.61	2,131.5	370.7	-432.3	569.5	0.00	0.00	0.00
2,280.0	25.90	310.61	2,167.5	382.1	-445.6	587.0	0.00	0.00	0.00
2,320.0	25.90	310.61	2,203.5	393.5	-458.9	604.5	0.00	0.00	0.00
2,360.0	25.90	310.61	2,239.5	404.8	-472.1	621.9	0.00	0.00	0.00
2,400.0	25.90	310.61	2,275.5	416.2	-485.4	639.4	0.00	0.00	0.00
2,440.0	25.90	310.61	2,311.5	427.6	-498.6	656.9	0.00	0.00	0.00
2,480.0	25.90	310.61	2,347.4	439.0	-511.9	674.3	0.00	0.00	0.00
2,520.0	25.90	310.61	2,383.4	450.3	-525.2	691.8	0.00	0.00	0.00
2,560.0	25.90	310.61	2,419.4	461.7	-538.4	709.3	0.00	0.00	0.00
2,600.0	25.90	310.61	2,455.4	473.1	-551.7	726.8	0.00	0.00	0.00
2,640.0	25.90	310.61	2,491.4	484.5	-565.0	744.2	0.00	0.00	0.00
2,680.0	25.90	310.61	2,527.3	495.8	-578.2	761.7	0.00	0.00	0.00
2,720.0	25.90	310.61	2,563.3	507.2	-591.5	779.2	0.00	0.00	0.00
2,760.0	25.90	310.61	2,599.3	518.6	-604.8	796.7	0.00	0.00	0.00
2,800.0	25.90	310.61	2,635.3	530.0	-618.0	814.1	0.00	0.00	0.00
2,840.0	25.90	310.61	2,671.3	541.3	-631.3	831.6	0.00	0.00	0.00
2,880.0	25.90	310.61	2,707.3	552.7	-644.6	849.1	0.00	0.00	0.00
2,920.0	25.90	310.61	2,743.2	564.1	-657.8	866.6	0.00	0.00	0.00
2,960.0	25.90	310.61	2,779.2	575.5	-671.1	884.0	0.00	0.00	0.00
3,000.0	25.90	310.61	2,815.2	586.8	-684.3	901.5	0.00	0.00	0.00
3,040.0	25.90	310.61	2,851.2	598.2	-697.6	919.0	0.00	0.00	0.00
3,080.0	25.90	310.61	2,887.2	609.6	-710.9	936.5	0.00	0.00	0.00
3,120.0	25.90	310.61	2,923.1	621.0	-724.1	953.9	0.00	0.00	0.00
3,160.0	25.90	310.61	2,959.1	632.3	-737.4	971.4	0.00	0.00	0.00
3,200.0	25.90	310.61	2,995.1	643.7	-750.7	988.9	0.00	0.00	0.00
3,240.0	25.90	310.61	3,031.1	655.1	-763.9	1,006.3	0.00	0.00	0.00
3,280.0	25.90	310.61	3,067.1	666.5	-777.2	1,023.8	0.00	0.00	0.00
3,320.0	25.90	310.61	3,103.1	677.8	-790.5	1,041.3	0.00	0.00	0.00
3,360.0	25.90	310.61	3,139.0	689.2	-803.7	1,058.8	0.00	0.00	0.00
3,400.0	25.90	310.61	3,175.0	700.6	-817.0	1,076.2	0.00	0.00	0.00
3,440.0	25.90	310.61	3,211.0	712.0	-830.3	1,093.7	0.00	0.00	0.00
3,480.0	25.90	310.61	3,247.0	723.3	-843.5	1,111.2	0.00	0.00	0.00
3,520.0	25.90	310.61	3,283.0	734.7	-856.8	1,128.7	0.00	0.00	0.00
3,560.0	25.90	310.61	3,318.9	746.1	-870.0	1,146.1	0.00	0.00	0.00
3,600.0	25.90	310.61	3,354.9	757.5	-883.3	1,163.6	0.00	0.00	0.00
3,640.0	25.90	310.61	3,390.9	768.8	-896.6	1,181.1	0.00	0.00	0.00
3,680.0	25.90	310.61	3,426.9	780.2	-909.8	1,198.6	0.00	0.00	0.00
3,720.0	25.90	310.61	3,462.9	791.6	-923.1	1,216.0	0.00	0.00	0.00
3,760.0	25.90	310.61	3,498.8	803.0	-936.4	1,233.5	0.00	0.00	0.00
3,800.0	25.90	310.61	3,534.8	814.3	-949.6	1,251.0	0.00	0.00	0.00
3,840.0	25.90	310.61	3,570.8	825.7	-962.9	1,268.4	0.00	0.00	0.00
3,880.0	25.90	310.61	3,606.8	837.1	-976.2	1,285.9	0.00	0.00	0.00
3,920.0	25.90	310.61	3,642.8	848.5	-989.4	1,303.4	0.00	0.00	0.00
3,960.0	25.90	310.61	3,678.8	859.8	-1,002.7	1,320.9	0.00	0.00	0.00
4,000.0	25.90	310.61	3,714.7	871.2	-1,016.0	1,338.3	0.00	0.00	0.00
4,040.0	25.90	310.61	3,750.7	882.6	-1,029.2	1,355.8	0.00	0.00	0.00
4,080.0	25.90	310.61	3,786.7	893.9	-1,042.5	1,373.3	0.00	0.00	0.00
4,120.0	25.90	310.61	3,822.7	905.3	-1,055.8	1,390.8	0.00	0.00	0.00

Database:	EDM den0-adp01 Server Data	Local Co-ordinate Reference:	Well Northridge 11-4D
Company:	Synergy Resources	TVD Reference:	WELL @ 4753.0ft (Original Well Elev)
Project:	SEC.4-T5N-R66W	MD Reference:	WELL @ 4753.0ft (Original Well Elev)
Site:	Northridge Pad Sec.4-T5N-R66W	North Reference:	True
Well:	Northridge 11-4D	Survey Calculation Method:	Minimum Curvature
Wellbore:	Wellbore #1		
Design:	Plan #3 (1-12-10)		

Planned Survey									
Measured Depth (ft)	Inclination (°)	Azimuth (°)	Vertical Depth (ft)	+N/-S (ft)	+E/-W (ft)	Vertical Section (ft)	Dogleg Rate (°/100ft)	Build Rate (°/100ft)	Turn Rate (°/100ft)
4,160.0	25.90	310.61	3,858.7	916.7	-1,069.0	1,408.2	0.00	0.00	0.00
4,200.0	25.90	310.61	3,894.6	928.1	-1,082.3	1,425.7	0.00	0.00	0.00
4,240.0	25.90	310.61	3,930.6	939.4	-1,095.5	1,443.2	0.00	0.00	0.00
4,280.0	25.90	310.61	3,966.6	950.8	-1,108.8	1,460.7	0.00	0.00	0.00
4,320.0	25.90	310.61	4,002.6	962.2	-1,122.1	1,478.1	0.00	0.00	0.00
4,360.0	25.90	310.61	4,038.6	973.6	-1,135.3	1,495.6	0.00	0.00	0.00
4,400.0	25.90	310.61	4,074.6	984.9	-1,148.6	1,513.1	0.00	0.00	0.00
4,440.0	25.90	310.61	4,110.5	996.3	-1,161.9	1,530.6	0.00	0.00	0.00
4,480.0	25.90	310.61	4,146.5	1,007.7	-1,175.1	1,548.0	0.00	0.00	0.00
4,520.0	25.90	310.61	4,182.5	1,019.1	-1,188.4	1,565.5	0.00	0.00	0.00
4,560.0	25.90	310.61	4,218.5	1,030.4	-1,201.7	1,583.0	0.00	0.00	0.00
4,600.0	25.90	310.61	4,254.5	1,041.8	-1,214.9	1,600.4	0.00	0.00	0.00
4,640.0	25.90	310.61	4,290.4	1,053.2	-1,228.2	1,617.9	0.00	0.00	0.00
4,680.0	25.90	310.61	4,326.4	1,064.6	-1,241.5	1,635.4	0.00	0.00	0.00
4,720.0	25.90	310.61	4,362.4	1,075.9	-1,254.7	1,652.9	0.00	0.00	0.00
4,760.0	25.90	310.61	4,398.4	1,087.3	-1,268.0	1,670.3	0.00	0.00	0.00
4,800.0	25.90	310.61	4,434.4	1,098.7	-1,281.2	1,687.8	0.00	0.00	0.00
4,840.0	25.90	310.61	4,470.4	1,110.1	-1,294.5	1,705.3	0.00	0.00	0.00
4,880.0	25.90	310.61	4,506.3	1,121.4	-1,307.8	1,722.8	0.00	0.00	0.00
4,920.0	25.90	310.61	4,542.3	1,132.8	-1,321.0	1,740.2	0.00	0.00	0.00
4,960.0	25.90	310.61	4,578.3	1,144.2	-1,334.3	1,757.7	0.00	0.00	0.00
5,000.0	25.90	310.61	4,614.3	1,155.6	-1,347.6	1,775.2	0.00	0.00	0.00
5,040.0	25.90	310.61	4,650.3	1,166.9	-1,360.8	1,792.7	0.00	0.00	0.00
5,080.0	25.90	310.61	4,686.2	1,178.3	-1,374.1	1,810.1	0.00	0.00	0.00
5,120.0	25.90	310.61	4,722.2	1,189.7	-1,387.4	1,827.6	0.00	0.00	0.00
5,160.0	25.90	310.61	4,758.2	1,201.1	-1,400.6	1,845.1	0.00	0.00	0.00
5,200.0	25.90	310.61	4,794.2	1,212.4	-1,413.9	1,862.6	0.00	0.00	0.00
5,240.0	25.90	310.61	4,830.2	1,223.8	-1,427.2	1,880.0	0.00	0.00	0.00
5,280.0	25.90	310.61	4,866.1	1,235.2	-1,440.4	1,897.5	0.00	0.00	0.00
5,320.0	25.90	310.61	4,902.1	1,246.6	-1,453.7	1,915.0	0.00	0.00	0.00
5,360.0	25.90	310.61	4,938.1	1,257.9	-1,467.0	1,932.4	0.00	0.00	0.00
5,400.0	25.90	310.61	4,974.1	1,269.3	-1,480.2	1,949.9	0.00	0.00	0.00
5,440.0	25.90	310.61	5,010.1	1,280.7	-1,493.5	1,967.4	0.00	0.00	0.00
5,480.0	25.90	310.61	5,046.1	1,292.1	-1,506.7	1,984.9	0.00	0.00	0.00
5,520.0	25.90	310.61	5,082.0	1,303.4	-1,520.0	2,002.3	0.00	0.00	0.00
5,560.0	25.90	310.61	5,118.0	1,314.8	-1,533.3	2,019.8	0.00	0.00	0.00
5,593.9	25.90	310.61	5,148.5	1,324.5	-1,544.5	2,034.6	0.00	0.00	0.00
5,600.0	25.78	310.61	5,154.0	1,326.2	-1,546.5	2,037.3	2.00	-2.00	0.00
5,640.0	24.98	310.61	5,190.1	1,337.3	-1,559.5	2,054.4	2.00	-2.00	0.00
5,680.0	24.18	310.61	5,226.5	1,348.2	-1,572.2	2,071.1	2.00	-2.00	0.00
5,720.0	23.38	310.61	5,263.1	1,358.7	-1,584.4	2,087.2	2.00	-2.00	0.00
5,760.0	22.58	310.61	5,299.9	1,368.8	-1,596.3	2,102.8	2.00	-2.00	0.00
5,800.0	21.78	310.61	5,337.0	1,378.7	-1,607.7	2,117.9	2.00	-2.00	0.00
5,840.0	20.98	310.61	5,374.2	1,388.2	-1,618.8	2,132.5	2.00	-2.00	0.00
5,880.0	20.18	310.61	5,411.7	1,397.3	-1,629.5	2,146.6	2.00	-2.00	0.00
5,920.0	19.38	310.61	5,449.3	1,406.1	-1,639.8	2,160.1	2.00	-2.00	0.00
5,960.0	18.58	310.61	5,487.1	1,414.6	-1,649.6	2,173.1	2.00	-2.00	0.00
6,000.0	17.78	310.61	5,525.1	1,422.7	-1,659.1	2,185.6	2.00	-2.00	0.00
6,040.0	16.98	310.61	5,563.3	1,430.5	-1,668.2	2,197.5	2.00	-2.00	0.00
6,080.0	16.18	310.61	5,601.7	1,437.9	-1,676.9	2,208.9	2.00	-2.00	0.00
6,120.0	15.38	310.61	5,640.1	1,445.0	-1,685.1	2,219.8	2.00	-2.00	0.00
6,160.0	14.58	310.61	5,678.8	1,451.7	-1,693.0	2,230.2	2.00	-2.00	0.00
6,200.0	13.78	310.61	5,717.6	1,458.1	-1,700.4	2,240.0	2.00	-2.00	0.00
6,240.0	12.98	310.61	5,756.5	1,464.1	-1,707.4	2,249.2	2.00	-2.00	0.00

Database:	EDM den0-adp01 Server Data	Local Co-ordinate Reference:	Well Northridge 11-4D
Company:	Synergy Resources	TVD Reference:	WELL @ 4753.0ft (Original Well Elev)
Project:	SEC.4-T5N-R66W	MD Reference:	WELL @ 4753.0ft (Original Well Elev)
Site:	Northridge Pad Sec.4-T5N-R66W	North Reference:	True
Well:	Northridge 11-4D	Survey Calculation Method:	Minimum Curvature
Wellbore:	Wellbore #1		
Design:	Plan #3 (1-12-10)		

Planned Survey									
Measured Depth (ft)	Inclination (°)	Azimuth (°)	Vertical Depth (ft)	+N/-S (ft)	+E/-W (ft)	Vertical Section (ft)	Dogleg Rate (°/100ft)	Build Rate (°/100ft)	Turn Rate (°/100ft)
6,280.0	12.18	310.61	5,795.5	1,469.8	-1,714.0	2,257.9	2.00	-2.00	0.00
6,320.0	11.38	310.61	5,834.7	1,475.1	-1,720.2	2,266.1	2.00	-2.00	0.00
6,360.0	10.58	310.61	5,873.9	1,480.1	-1,726.0	2,273.7	2.00	-2.00	0.00
6,400.0	9.78	310.61	5,913.3	1,484.7	-1,731.4	2,280.8	2.00	-2.00	0.00
6,440.0	8.98	310.61	5,952.8	1,488.9	-1,736.3	2,287.3	2.00	-2.00	0.00
6,480.0	8.18	310.61	5,992.3	1,492.8	-1,740.9	2,293.3	2.00	-2.00	0.00
6,520.0	7.38	310.61	6,032.0	1,496.3	-1,745.0	2,298.7	2.00	-2.00	0.00
6,560.0	6.58	310.61	6,071.7	1,499.5	-1,748.7	2,303.6	2.00	-2.00	0.00
6,600.0	5.78	310.61	6,111.4	1,502.3	-1,751.9	2,307.9	2.00	-2.00	0.00
6,640.0	4.98	310.61	6,151.3	1,504.8	-1,754.8	2,311.6	2.00	-2.00	0.00
6,680.0	4.18	310.61	6,191.1	1,506.8	-1,757.2	2,314.8	2.00	-2.00	0.00
6,689.3	4.00	310.61	6,200.4	1,507.3	-1,757.7	2,315.5	2.00	-2.00	0.00
PERMIT TARGET 558'FNL, 839'FWL									
6,720.0	3.38	310.61	6,231.0	1,508.6	-1,759.2	2,317.4	2.00	-2.00	0.00
6,760.0	2.58	310.61	6,271.0	1,509.9	-1,760.8	2,319.5	2.00	-2.00	0.00
6,800.0	1.78	310.61	6,311.0	1,510.9	-1,761.9	2,321.1	2.00	-2.00	0.00
6,840.0	0.98	310.61	6,350.9	1,511.5	-1,762.7	2,322.0	2.00	-2.00	0.00
6,880.0	0.18	310.61	6,390.9	1,511.8	-1,763.0	2,322.4	2.00	-2.00	0.00
6,889.1	0.00	0.00	6,400.0	1,511.8	-1,763.0	2,322.4	2.00	-2.00	545.29
DRILL TARGET 616'FNL, 788'FWL									
6,920.0	0.00	0.00	6,430.9	1,511.8	-1,763.0	2,322.4	0.00	0.00	0.00
6,960.0	0.00	0.00	6,470.9	1,511.8	-1,763.0	2,322.4	0.00	0.00	0.00
7,000.0	0.00	0.00	6,510.9	1,511.8	-1,763.0	2,322.4	0.00	0.00	0.00
7,040.0	0.00	0.00	6,550.9	1,511.8	-1,763.0	2,322.4	0.00	0.00	0.00
7,080.0	0.00	0.00	6,590.9	1,511.8	-1,763.0	2,322.4	0.00	0.00	0.00
7,120.0	0.00	0.00	6,630.9	1,511.8	-1,763.0	2,322.4	0.00	0.00	0.00
7,160.0	0.00	0.00	6,670.9	1,511.8	-1,763.0	2,322.4	0.00	0.00	0.00
7,189.1	0.00	0.00	6,700.0	1,511.8	-1,763.0	2,322.4	0.00	0.00	0.00
LEGAL WINDOW 400' X 400' 741'FNL, 663'FWL									
7,200.0	0.00	0.00	6,710.9	1,511.8	-1,763.0	2,322.4	0.00	0.00	0.00
7,240.0	0.00	0.00	6,750.9	1,511.8	-1,763.0	2,322.4	0.00	0.00	0.00
7,280.0	0.00	0.00	6,790.9	1,511.8	-1,763.0	2,322.4	0.00	0.00	0.00
7,320.0	0.00	0.00	6,830.9	1,511.8	-1,763.0	2,322.4	0.00	0.00	0.00
7,360.0	0.00	0.00	6,870.9	1,511.8	-1,763.0	2,322.4	0.00	0.00	0.00
7,400.0	0.00	0.00	6,910.9	1,511.8	-1,763.0	2,322.4	0.00	0.00	0.00
7,440.0	0.00	0.00	6,950.9	1,511.8	-1,763.0	2,322.4	0.00	0.00	0.00
7,480.0	0.00	0.00	6,990.9	1,511.8	-1,763.0	2,322.4	0.00	0.00	0.00
7,520.0	0.00	0.00	7,030.9	1,511.8	-1,763.0	2,322.4	0.00	0.00	0.00
7,560.0	0.00	0.00	7,070.9	1,511.8	-1,763.0	2,322.4	0.00	0.00	0.00
7,600.0	0.00	0.00	7,110.9	1,511.8	-1,763.0	2,322.4	0.00	0.00	0.00
7,640.0	0.00	0.00	7,150.9	1,511.8	-1,763.0	2,322.4	0.00	0.00	0.00
7,680.0	0.00	0.00	7,190.9	1,511.8	-1,763.0	2,322.4	0.00	0.00	0.00
7,720.0	0.00	0.00	7,230.9	1,511.8	-1,763.0	2,322.4	0.00	0.00	0.00
7,760.0	0.00	0.00	7,270.9	1,511.8	-1,763.0	2,322.4	0.00	0.00	0.00
7,800.0	0.00	0.00	7,310.9	1,511.8	-1,763.0	2,322.4	0.00	0.00	0.00
7,840.0	0.00	0.00	7,350.9	1,511.8	-1,763.0	2,322.4	0.00	0.00	0.00
7,880.0	0.00	0.00	7,390.9	1,511.8	-1,763.0	2,322.4	0.00	0.00	0.00
7,920.0	0.00	0.00	7,430.9	1,511.8	-1,763.0	2,322.4	0.00	0.00	0.00
7,960.0	0.00	0.00	7,470.9	1,511.8	-1,763.0	2,322.4	0.00	0.00	0.00
8,000.0	0.00	0.00	7,510.9	1,511.8	-1,763.0	2,322.4	0.00	0.00	0.00
8,040.0	0.00	0.00	7,550.9	1,511.8	-1,763.0	2,322.4	0.00	0.00	0.00
8,080.0	0.00	0.00	7,590.9	1,511.8	-1,763.0	2,322.4	0.00	0.00	0.00
8,120.0	0.00	0.00	7,630.9	1,511.8	-1,763.0	2,322.4	0.00	0.00	0.00

Database:	EDM den0-adp01 Server Data	Local Co-ordinate Reference:	Well Northridge 11-4D
Company:	Synergy Resources	TVD Reference:	WELL @ 4753.0ft (Original Well Elev)
Project:	SEC.4-T5N-R66W	MD Reference:	WELL @ 4753.0ft (Original Well Elev)
Site:	Northridge Pad Sec.4-T5N-R66W	North Reference:	True
Well:	Northridge 11-4D	Survey Calculation Method:	Minimum Curvature
Wellbore:	Wellbore #1		
Design:	Plan #3 (1-12-10)		

Planned Survey

Measured Depth (ft)	Inclination (°)	Azimuth (°)	Vertical Depth (ft)	+N/-S (ft)	+E/-W (ft)	Vertical Section (ft)	Dogleg Rate (°/100ft)	Build Rate (°/100ft)	Turn Rate (°/100ft)
8,160.0	0.00	0.00	7,670.9	1,511.8	-1,763.0	2,322.4	0.00	0.00	0.00
8,200.0	0.00	0.00	7,710.9	1,511.8	-1,763.0	2,322.4	0.00	0.00	0.00
8,240.0	0.00	0.00	7,750.9	1,511.8	-1,763.0	2,322.4	0.00	0.00	0.00
8,280.0	0.00	0.00	7,790.9	1,511.8	-1,763.0	2,322.4	0.00	0.00	0.00
8,320.0	0.00	0.00	7,830.9	1,511.8	-1,763.0	2,322.4	0.00	0.00	0.00
8,360.0	0.00	0.00	7,870.9	1,511.8	-1,763.0	2,322.4	0.00	0.00	0.00
8,400.0	0.00	0.00	7,910.9	1,511.8	-1,763.0	2,322.4	0.00	0.00	0.00
8,440.0	0.00	0.00	7,950.9	1,511.8	-1,763.0	2,322.4	0.00	0.00	0.00
8,454.1	0.00	0.00	7,965.0	1,511.8	-1,763.0	2,322.4	0.00	0.00	0.00

Targets

Target Name	Dip Angle (°)	Dip Dir. (°)	TVD (ft)	+N/-S (ft)	+E/-W (ft)	Northing (ft)	Easting (ft)	Latitude	Longitude
- hit/miss target									
- Shape									
PERMIT TARGET 55I	0.00	0.00	6,200.0	1,569.8	-1,712.0	1,402,381.90	3,197,743.95	40° 26' 8.757 N	104° 47' 22.603 W
- plan misses target center by 77.5ft at 6689.3ft MD (6200.4 TVD, 1507.3 N, -1757.7 E)									
- Point									
DRILL TARGET 616'F	0.00	0.00	6,400.0	1,511.8	-1,763.0	1,402,323.46	3,197,693.40	40° 26' 8.183 N	104° 47' 23.263 W
- plan hits target center									
- Point									
LEGAL WINDOW 40C	0.00	0.00	6,700.0	1,386.8	-1,888.0	1,402,197.46	3,197,569.41	40° 26' 6.948 N	104° 47' 24.879 W
- plan misses target center by 176.8ft at 7189.1ft MD (6700.0 TVD, 1511.8 N, -1763.0 E)									
- Rectangle (sides W400.0 H400.0 D1,265.0)									

Casing Points

Measured Depth (ft)	Vertical Depth (ft)	Name	Casing Diameter (")	Hole Diameter (")
661.0	660.0	8 5/8"	8-5/8	12-1/4



Directional

Synergy Resources

SEC.4-T5N-R66W

Northridge Pad Sec.4-T5N-R66W

Northridge 11-4D

Wellbore #1

Plan #3 (1-12-10)

Anticollision Report

13 January, 2010

ENSIGN DIRECTIONAL

Company:	Synergy Resources	Local Co-ordinate Reference:	Well Northridge 11-4D
Project:	SEC.4-T5N-R66W	TVD Reference:	WELL @ 4753.0ft (Original Well Elev)
Reference Site:	Northridge Pad Sec.4-T5N-R66W	MD Reference:	WELL @ 4753.0ft (Original Well Elev)
Site Error:	0.0ft	North Reference:	True
Reference Well:	Northridge 11-4D	Survey Calculation Method:	Minimum Curvature
Well Error:	0.0ft	Output errors are at	2.00 sigma
Reference Wellbore	Wellbore #1	Database:	EDM den0-adp01 Server Data
Reference Design:	Plan #3 (1-12-10)	Offset TVD Reference:	Offset Datum

Reference:	Plan #3 (1-12-10)		
Filter type:	NO GLOBAL FILTER: Using user defined selection & filtering criteria		
Interpolation Method:	MD Interval 100.0ft	Error Model:	ISCWSA
Depth Range:	Unlimited	Scan Method:	Closest Approach 3D
Results Limited by:	Maximum center-center distance of 2,000.0ft	Error Surface:	Elliptical Conic
Warning Levels Evaluated at:	2.00 Sigma		

Survey Tool Program		Date	1/13/2010		
From (ft)	To (ft)	Survey (Wellbore)	Tool Name	Description	
0.0	8,454.1	Plan #3 (1-12-10) (Wellbore #1)	MWD	MWD - Standard	

Summary						
Site Name	Reference Measured Depth (ft)	Offset Measured Depth (ft)	Distance Between Centres (ft)	Distance Between Ellipses (ft)	Separation Factor	Warning
Offset Well - Wellbore - Design						
Northridge Pad Sec.4-T5N-R66W						
Northridge 21-4D - Wellbore #1 - Plan #3 (1-12-10)	200.0	200.0	12.1	11.4	17.907	CC, ES
Northridge 21-4D - Wellbore #1 - Plan #3 (1-12-10)	500.0	498.6	21.3	19.3	10.431	SF
Northridge 4AD - Wellbore #1 - Plan #3 (1-11-10)	300.0	300.0	11.8	10.6	10.462	CC, ES
Northridge 4AD - Wellbore #1 - Plan #3 (1-11-10)	500.0	499.8	14.8	12.7	7.285	SF

Offset Design		Northridge Pad Sec.4-T5N-R66W - Northridge 21-4D - Wellbore #1 - Plan #3 (1-12-10)											Offset Site Error:		0.0 ft
Survey Program: 0-MWD													Offset Well Error:		0.0 ft
Reference		Offset		Semi Major Axis		Highside Toolface (°)	Offset Wellbore Centre		Distance		Minimum Separation (ft)	Separation Factor	Warning		
Measured Depth (ft)	Vertical Depth (ft)	Measured Depth (ft)	Vertical Depth (ft)	Reference (ft)	Offset (ft)		+N/-S (ft)	+E/-W (ft)	Between Centres (ft)	Between Ellipses (ft)					
0.0	0.0	0.0	0.0	0.0	0.0	28.96	10.6	5.8	12.1	12.1	0.00	N/A			
100.0	100.0	100.0	100.0	0.1	0.1	28.96	10.6	5.8	12.1	11.9	0.22	53.721			
200.0	200.0	200.0	200.0	0.3	0.3	28.96	10.6	5.8	12.1	11.4	0.67	17.907	CC, ES		
300.0	300.0	299.7	299.7	0.6	0.6	23.19	12.2	5.2	13.3	12.1	1.12	11.811			
400.0	400.0	399.2	399.1	0.8	0.8	65.65	17.0	3.3	16.6	15.0	1.58	10.509			
500.0	499.8	498.6	498.0	1.0	1.0	64.17	25.1	0.2	21.3	19.3	2.04	10.431	SF		
600.0	599.5	597.7	596.5	1.3	1.3	65.51	36.3	-4.1	27.3	24.8	2.54	10.752			
700.0	698.7	696.6	694.1	1.5	1.6	68.03	50.6	-9.7	34.7	31.6	3.10	11.202			
800.0	797.5	795.2	790.9	1.9	2.0	70.87	68.0	-16.5	43.5	39.7	3.73	11.654			
900.0	895.6	893.5	886.7	2.2	2.4	73.62	88.4	-24.4	53.7	49.2	4.46	12.045			
1,000.0	993.1	991.4	981.3	2.7	2.9	76.13	111.8	-33.5	65.4	60.1	5.30	12.356			
1,100.0	1,089.6	1,088.9	1,074.7	3.1	3.4	78.34	138.1	-43.7	78.7	72.5	6.25	12.588			
1,200.0	1,185.3	1,187.9	1,169.0	3.7	4.0	81.22	166.1	-54.7	92.5	85.1	7.34	12.594			
1,300.0	1,279.8	1,286.7	1,263.1	4.3	4.6	85.16	194.1	-65.5	106.1	97.5	8.55	12.401			
1,400.0	1,373.2	1,385.2	1,357.0	5.0	5.2	89.78	222.1	-76.4	120.1	110.2	9.87	12.166			
1,500.0	1,465.2	1,483.4	1,450.5	5.8	5.8	94.81	249.9	-87.2	135.0	123.8	11.26	11.994			
1,600.0	1,555.8	1,581.0	1,543.5	6.6	6.4	100.03	277.6	-98.0	151.5	138.8	12.68	11.948			
1,700.0	1,645.8	1,678.5	1,636.3	7.5	7.0	104.97	305.2	-108.7	169.5	155.4	14.08	12.039			
1,800.0	1,735.8	1,775.9	1,729.1	8.4	7.5	108.96	332.8	-119.5	188.4	173.0	15.42	12.217			
1,900.0	1,825.7	1,873.3	1,821.9	9.3	8.1	112.21	360.4	-130.2	208.1	191.4	16.74	12.437			
2,000.0	1,915.7	1,970.7	1,914.7	10.2	8.7	114.90	388.0	-141.0	228.4	210.4	18.02	12.674			
2,100.0	2,005.6	2,068.1	2,007.5	11.1	9.3	117.15	415.6	-151.7	249.0	229.8	19.29	12.914			
2,200.0	2,095.6	2,165.5	2,100.3	12.0	9.9	119.06	443.2	-162.4	270.0	249.5	20.54	13.149			

CC - Min centre to center distance or convergent point, SF - min separation factor, ES - min ellipse separation

Company:	Synergy Resources	Local Co-ordinate Reference:	Well Northridge 11-4D
Project:	SEC.4-T5N-R66W	TVD Reference:	WELL @ 4753.0ft (Original Well Elev)
Reference Site:	Northridge Pad Sec.4-T5N-R66W	MD Reference:	WELL @ 4753.0ft (Original Well Elev)
Site Error:	0.0ft	North Reference:	True
Reference Well:	Northridge 11-4D	Survey Calculation Method:	Minimum Curvature
Well Error:	0.0ft	Output errors are at	2.00 sigma
Reference Wellbore	Wellbore #1	Database:	EDM den0-adp01 Server Data
Reference Design:	Plan #3 (1-12-10)	Offset TVD Reference:	Offset Datum

Offset Design Northridge Pad Sec.4-T5N-R66W - Northridge 21-4D - Wellbore #1 - Plan #3 (1-12-10)													Offset Site Error:	0.0 ft
Survey Program: 0-MWD													Offset Well Error:	0.0 ft
Measured Depth (ft)	Vertical Depth (ft)	Measured Depth (ft)	Vertical Depth (ft)	Semi Major Axis Reference	Offset (ft)	Highside Toolface (°)	Offset Wellbore Centre +N/-S (ft)	+E/-W (ft)	Distance Between Centres (ft)	Between Ellipses (ft)	Minimum Separation (ft)	Separation Factor	Warning	
2,300.0	2,185.5	2,262.9	2,193.1	12.9	10.5	120.69	470.8	-173.2	291.2	269.5	21.77	13.375		
2,400.0	2,275.5	2,360.3	2,285.9	13.8	11.1	122.10	498.4	-183.9	312.6	289.6	23.01	13.590		
2,500.0	2,365.4	2,457.7	2,378.7	14.8	11.7	123.33	526.0	-194.7	334.2	310.0	24.23	13.794		
2,600.0	2,455.4	2,555.1	2,471.5	15.7	12.3	124.41	553.7	-205.4	355.9	330.5	25.45	13.985		
2,700.0	2,545.3	2,652.5	2,564.3	16.6	12.9	125.37	581.3	-216.1	377.7	351.1	26.67	14.166		
2,800.0	2,635.3	2,750.0	2,657.1	17.5	13.5	126.23	608.9	-226.9	399.6	371.7	27.88	14.335		
2,900.0	2,725.2	2,847.4	2,749.9	18.4	14.1	126.99	636.5	-237.6	421.6	392.5	29.09	14.494		
3,000.0	2,815.2	2,944.8	2,842.7	19.4	14.7	127.68	664.1	-248.3	443.6	413.3	30.30	14.643		
3,100.0	2,905.2	3,042.2	2,935.5	20.3	15.3	128.30	691.7	-259.1	465.7	434.2	31.50	14.783		
3,200.0	2,995.1	3,139.6	3,028.3	21.2	15.9	128.87	719.3	-269.8	487.9	455.2	32.71	14.915		
3,300.0	3,085.1	3,237.0	3,121.1	22.1	16.5	129.39	746.9	-280.6	510.1	476.1	33.91	15.040		
3,400.0	3,175.0	3,334.4	3,213.8	23.0	17.1	129.86	774.5	-291.3	532.3	497.2	35.12	15.157		
3,500.0	3,265.0	3,431.8	3,306.6	24.0	17.7	130.30	802.1	-302.0	554.5	518.2	36.32	15.267		
3,600.0	3,354.9	3,529.2	3,399.4	24.9	18.3	130.70	829.8	-312.8	576.8	539.3	37.52	15.372		
3,700.0	3,444.9	3,626.6	3,492.2	25.8	18.9	131.08	857.4	-323.5	599.1	560.4	38.73	15.471		
3,800.0	3,534.8	3,724.0	3,585.0	26.7	19.5	131.42	885.0	-334.3	621.4	581.5	39.93	15.564		
3,900.0	3,624.8	3,821.5	3,677.8	27.7	20.1	131.75	912.6	-345.0	643.8	602.7	41.13	15.653		
4,000.0	3,714.7	3,918.9	3,770.6	28.6	20.7	132.05	940.2	-355.7	666.2	623.8	42.33	15.737		
4,100.0	3,804.7	4,016.3	3,863.4	29.5	21.3	132.33	967.8	-366.5	688.5	645.0	43.53	15.818		
4,200.0	3,894.6	4,113.7	3,956.2	30.4	21.9	132.59	995.4	-377.2	710.9	666.2	44.73	15.894		
4,300.0	3,984.6	4,211.1	4,049.0	31.4	22.5	132.84	1,023.0	-388.0	733.4	687.4	45.93	15.966		
4,400.0	4,074.6	4,308.5	4,141.8	32.3	23.1	133.07	1,050.6	-398.7	755.8	708.6	47.13	16.036		
4,500.0	4,164.5	4,405.9	4,234.6	33.2	23.7	133.29	1,078.2	-409.4	778.2	729.9	48.33	16.102		
4,600.0	4,254.5	4,503.3	4,327.4	34.1	24.3	133.50	1,105.9	-420.2	800.7	751.1	49.53	16.165		
4,700.0	4,344.4	4,600.7	4,420.2	35.1	24.9	133.70	1,133.5	-430.9	823.1	772.4	50.73	16.225		
4,800.0	4,434.4	4,698.1	4,513.0	36.0	25.5	133.88	1,161.1	-441.7	845.6	793.6	51.93	16.283		
4,900.0	4,524.3	4,795.5	4,605.8	36.9	26.1	134.06	1,188.7	-452.4	868.0	814.9	53.13	16.338		
5,000.0	4,614.3	4,893.0	4,698.6	37.8	26.8	134.22	1,216.3	-463.1	890.5	836.2	54.33	16.391		
5,100.0	4,704.2	4,990.4	4,791.4	38.8	27.4	134.38	1,243.9	-473.9	913.0	857.5	55.53	16.442		
5,200.0	4,794.2	5,087.8	4,884.2	39.7	28.0	134.53	1,271.5	-484.6	935.5	878.8	56.73	16.491		
5,300.0	4,884.1	5,185.2	4,976.9	40.6	28.6	134.68	1,299.1	-495.3	958.0	900.1	57.93	16.538		
5,400.0	4,974.1	5,282.6	5,069.7	41.6	29.2	134.82	1,326.7	-506.1	980.5	921.4	59.13	16.583		
5,500.0	5,064.0	5,380.0	5,162.5	42.5	29.8	134.95	1,354.3	-516.8	1,003.0	942.7	60.33	16.626		
5,600.0	5,154.0	5,477.4	5,255.3	43.4	30.4	135.09	1,382.0	-527.6	1,025.5	964.0	61.52	16.669		
5,700.0	5,244.8	5,572.9	5,346.4	44.1	30.9	135.44	1,409.0	-538.1	1,046.7	984.1	62.60	16.721		
5,800.0	5,337.0	5,660.5	5,430.3	44.8	31.4	135.74	1,432.1	-547.1	1,066.1	1,002.6	63.49	16.791		
5,900.0	5,430.5	5,748.2	5,515.1	45.4	31.7	136.02	1,452.8	-555.1	1,084.1	1,019.8	64.28	16.864		
6,000.0	5,525.1	5,835.8	5,600.6	45.9	32.0	136.31	1,471.2	-562.3	1,100.5	1,035.5	64.98	16.935		
6,100.0	5,620.9	5,923.6	5,686.6	46.4	32.3	136.59	1,487.0	-568.4	1,115.5	1,049.9	65.59	17.007		
6,200.0	5,717.6	6,011.3	5,773.2	46.9	32.6	136.87	1,500.5	-573.7	1,128.9	1,062.8	66.10	17.078		
6,300.0	5,815.1	6,100.0	5,861.0	47.2	32.8	137.14	1,511.5	-578.0	1,140.8	1,074.3	66.52	17.150		
6,400.0	5,913.3	6,186.7	5,947.3	47.6	33.0	137.41	1,519.9	-581.2	1,151.2	1,084.4	66.83	17.226		
6,500.0	6,012.1	6,274.4	6,034.7	47.8	33.2	137.68	1,525.8	-583.5	1,160.1	1,093.0	67.05	17.301		
6,600.0	6,111.4	6,362.0	6,122.2	48.1	33.3	137.95	1,529.3	-584.9	1,167.4	1,100.3	67.18	17.379		
6,700.0	6,211.1	6,450.8	6,211.1	48.2	33.4	138.22	1,530.3	-585.3	1,173.2	1,106.0	67.21	17.455		
6,800.0	6,311.0	6,550.7	6,311.0	48.4	33.5	138.43	1,530.3	-585.3	1,176.9	1,109.6	67.22	17.506		
6,900.0	6,410.9	6,650.7	6,410.9	48.4	33.5	89.10	1,530.3	-585.3	1,177.9	1,110.6	67.28	17.506		
7,000.0	6,510.9	6,750.7	6,510.9	48.5	33.6	89.10	1,530.3	-585.3	1,177.9	1,110.4	67.45	17.462		
7,100.0	6,610.9	6,850.7	6,610.9	48.6	33.7	89.10	1,530.3	-585.3	1,177.9	1,110.3	67.63	17.418		
7,200.0	6,710.9	6,950.7	6,710.9	48.6	33.8	89.10	1,530.3	-585.3	1,177.9	1,110.1	67.80	17.373		
7,300.0	6,810.9	7,050.7	6,810.9	48.7	33.9	89.10	1,530.3	-585.3	1,177.9	1,109.9	67.98	17.327		
7,400.0	6,910.9	7,150.7	6,910.9	48.8	34.0	89.10	1,530.3	-585.3	1,177.9	1,109.7	68.16	17.281		

CC - Min centre to center distance or convergent point, SF - min separation factor, ES - min ellipse separation

Company:	Synergy Resources	Local Co-ordinate Reference:	Well Northridge 11-4D
Project:	SEC.4-T5N-R66W	TVD Reference:	WELL @ 4753.0ft (Original Well Elev)
Reference Site:	Northridge Pad Sec.4-T5N-R66W	MD Reference:	WELL @ 4753.0ft (Original Well Elev)
Site Error:	0.0ft	North Reference:	True
Reference Well:	Northridge 11-4D	Survey Calculation Method:	Minimum Curvature
Well Error:	0.0ft	Output errors are at	2.00 sigma
Reference Wellbore	Wellbore #1	Database:	EDM den0-adp01 Server Data
Reference Design:	Plan #3 (1-12-10)	Offset TVD Reference:	Offset Datum

Offset Design Northridge Pad Sec.4-T5N-R66W - Northridge 21-4D - Wellbore #1 - Plan #3 (1-12-10)													Offset Site Error:	0.0 ft
Survey Program: 0-MWD													Offset Well Error:	0.0 ft
Measured Depth (ft)	Vertical Depth (ft)	Measured Depth (ft)	Vertical Depth (ft)	Semi Major Axis		Highside Toolface (°)	Offset Wellbore Centre		Distance		Minimum Separation (ft)	Separation Factor	Warning	
Reference	Offset	Reference	Offset	(ft)	(ft)		+N/-S (ft)	+E/-W (ft)	Between Centres (ft)	Between Ellipses (ft)				
7,500.0	7,010.9	7,250.7	7,010.9	48.8	34.1	89.10	1,530.3	-585.3	1,177.9	1,109.5	68.34	17.235		
7,600.0	7,110.9	7,350.7	7,110.9	48.9	34.2	89.10	1,530.3	-585.3	1,177.9	1,109.4	68.53	17.189		
7,700.0	7,210.9	7,450.7	7,210.9	49.0	34.3	89.10	1,530.3	-585.3	1,177.9	1,109.2	68.71	17.142		
7,800.0	7,310.9	7,550.7	7,310.9	49.0	34.4	89.10	1,530.3	-585.3	1,177.9	1,109.0	68.90	17.095		
7,900.0	7,410.9	7,650.7	7,410.9	49.1	34.5	89.10	1,530.3	-585.3	1,177.9	1,108.8	69.10	17.047		
8,000.0	7,510.9	7,750.7	7,510.9	49.2	34.6	89.10	1,530.3	-585.3	1,177.9	1,108.6	69.29	16.999		
8,100.0	7,610.9	7,850.7	7,610.9	49.2	34.7	89.10	1,530.3	-585.3	1,177.9	1,108.4	69.49	16.951		
8,200.0	7,710.9	7,950.7	7,710.9	49.3	34.8	89.10	1,530.3	-585.3	1,177.9	1,108.2	69.69	16.903		
8,300.0	7,810.9	8,050.7	7,810.9	49.4	34.9	89.10	1,530.3	-585.3	1,177.9	1,108.0	69.89	16.854		
8,400.0	7,910.9	8,150.7	7,910.9	49.5	35.0	89.10	1,530.3	-585.3	1,177.9	1,107.8	70.09	16.805		
8,454.1	7,965.0	8,204.7	7,965.0	49.5	35.1	89.10	1,530.3	-585.3	1,177.9	1,107.7	70.20	16.778		

Company:	Synergy Resources	Local Co-ordinate Reference:	Well Northridge 11-4D
Project:	SEC.4-T5N-R66W	TVD Reference:	WELL @ 4753.0ft (Original Well Elev)
Reference Site:	Northridge Pad Sec.4-T5N-R66W	MD Reference:	WELL @ 4753.0ft (Original Well Elev)
Site Error:	0.0ft	North Reference:	True
Reference Well:	Northridge 11-4D	Survey Calculation Method:	Minimum Curvature
Well Error:	0.0ft	Output errors are at	2.00 sigma
Reference Wellbore	Wellbore #1	Database:	EDM den0-adp01 Server Data
Reference Design:	Plan #3 (1-12-10)	Offset TVD Reference:	Offset Datum

Offset Design Northridge Pad Sec.4-T5N-R66W - Northridge 4AD - Wellbore #1 - Plan #3 (1-11-10)														Offset Site Error:	0.0 ft
Survey Program: 0-MWD														Offset Well Error:	0.0 ft
Reference	Offset	Semi Major Axis		Distance		Minimum Separation		Separation Factor		Warning					
Measured Depth (ft)	Vertical Depth (ft)	Measured Depth (ft)	Vertical Depth (ft)	Reference (ft)	Offset (ft)	Highside Toolface (°)	Offset Wellbore Centre +N/-S (ft)	+E/-W (ft)	Between Centres (ft)	Between Ellipses (ft)	Minimum Separation (ft)	Separation Factor			
0.0	0.0	0.0	0.0	0.0	0.0	-150.18	-10.2	-5.8	11.8	11.8	0.00	N/A			
100.0	100.0	100.0	100.0	0.1	0.1	-150.18	-10.2	-5.8	11.8	11.5	0.22	52.309			
200.0	200.0	200.0	200.0	0.3	0.3	-150.18	-10.2	-5.8	11.8	11.1	0.67	17.436			
300.0	300.0	300.0	300.0	0.6	0.6	-150.18	-10.2	-5.8	11.8	10.6	1.12	10.462 CC, ES			
400.0	400.0	400.0	400.0	0.8	0.8	-108.86	-10.2	-5.8	12.2	10.6	1.57	7.771			
500.0	499.8	499.8	499.8	1.0	1.0	-128.41	-10.2	-5.8	14.8	12.7	2.03	7.285 SF			
600.0	599.5	599.5	599.5	1.3	1.2	-147.02	-10.2	-5.8	21.3	18.8	2.49	8.559			
700.0	698.7	698.7	698.7	1.5	1.5	-158.81	-10.2	-5.8	32.2	29.3	2.95	10.926			
800.0	797.5	797.5	797.5	1.9	1.7	-165.61	-10.2	-5.8	47.2	43.8	3.41	13.842			
900.0	895.6	895.6	895.6	2.2	1.9	-169.67	-10.2	-5.8	65.8	62.0	3.86	17.034			
1,000.0	993.1	993.1	993.1	2.7	2.1	-172.24	-10.2	-5.8	88.1	83.7	4.32	20.374			
1,100.0	1,089.6	1,093.1	1,093.1	3.1	2.3	-173.74	-9.5	-7.2	112.4	107.6	4.78	23.532			
1,200.0	1,185.3	1,194.2	1,194.1	3.7	2.6	-174.40	-7.1	-11.6	136.9	131.7	5.23	26.195			
1,300.0	1,279.8	1,296.2	1,295.7	4.3	2.8	-172.31	-3.0	-19.3	161.5	155.8	5.69	28.383			
1,400.0	1,373.2	1,399.1	1,397.8	5.0	3.0	-174.43	2.9	-30.3	186.2	180.0	6.17	30.162			
1,500.0	1,465.2	1,502.8	1,500.3	5.8	3.3	-174.11	10.6	-44.6	210.9	204.2	6.68	31.581			
1,600.0	1,555.8	1,607.5	1,602.9	6.6	3.7	-173.64	20.2	-62.4	235.6	228.4	7.21	32.665			
1,700.0	1,645.8	1,713.5	1,706.1	7.5	4.1	-173.07	31.6	-83.7	258.5	250.6	7.84	32.969			
1,800.0	1,735.8	1,821.0	1,809.8	8.4	4.5	-172.31	45.1	-108.8	277.9	269.4	8.51	32.648			
1,900.0	1,825.7	1,924.1	1,908.3	9.3	5.0	-171.47	59.5	-135.6	294.5	285.2	9.22	31.937			
2,000.0	1,915.7	2,022.7	2,002.4	10.2	5.5	-170.72	73.4	-161.6	310.7	300.8	9.94	31.251			
2,100.0	2,005.6	2,121.3	2,096.5	11.1	6.1	-170.05	87.4	-187.5	327.0	316.3	10.69	30.588			
2,200.0	2,095.6	2,219.9	2,190.6	12.0	6.6	-169.44	101.3	-213.5	343.3	331.8	11.46	29.968			
2,300.0	2,185.5	2,318.5	2,284.6	12.9	7.2	-168.89	115.3	-239.5	359.7	347.4	12.24	29.390			
2,400.0	2,275.5	2,417.1	2,378.7	13.8	7.8	-168.38	129.2	-265.4	376.0	363.0	13.03	28.851			
2,500.0	2,365.4	2,515.7	2,472.8	14.8	8.4	-167.92	143.2	-291.4	392.4	378.6	13.84	28.351			
2,600.0	2,455.4	2,614.3	2,566.9	15.7	9.0	-167.50	157.1	-317.4	408.9	394.2	14.66	27.886			
2,700.0	2,545.3	2,712.9	2,661.0	16.6	9.5	-167.10	171.1	-343.3	425.3	409.8	15.49	27.454			
2,800.0	2,635.3	2,811.5	2,755.1	17.5	10.1	-166.74	185.0	-369.3	441.8	425.5	16.33	27.053			
2,900.0	2,725.2	2,910.1	2,849.2	18.4	10.7	-166.40	199.0	-395.3	458.3	441.1	17.18	26.681			
3,000.0	2,815.2	3,008.7	2,943.3	19.4	11.3	-166.09	212.9	-421.3	474.8	456.8	18.03	26.333			
3,100.0	2,905.2	3,107.3	3,037.3	20.3	11.9	-165.79	226.9	-447.2	491.3	472.4	18.89	26.010			
3,200.0	2,995.1	3,205.8	3,131.4	21.2	12.6	-165.52	240.8	-473.2	507.8	488.1	19.75	25.707			
3,300.0	3,085.1	3,304.4	3,225.5	22.1	13.2	-165.26	254.8	-499.2	524.4	503.7	20.62	25.425			
3,400.0	3,175.0	3,403.0	3,319.6	23.0	13.8	-165.02	268.7	-525.1	540.9	519.4	21.50	25.160			
3,500.0	3,265.0	3,501.6	3,413.7	24.0	14.4	-164.80	282.7	-551.1	557.5	535.1	22.38	24.912			
3,600.0	3,354.9	3,600.2	3,507.8	24.9	15.0	-164.58	296.6	-577.1	574.0	550.8	23.26	24.679			
3,700.0	3,444.9	3,698.8	3,601.9	25.8	15.6	-164.38	310.6	-603.1	590.6	566.5	24.15	24.460			
3,800.0	3,534.8	3,797.4	3,695.9	26.7	16.2	-164.19	324.5	-629.0	607.2	582.1	25.03	24.253			
3,900.0	3,624.8	3,896.0	3,790.0	27.7	16.8	-164.01	338.5	-655.0	623.8	597.8	25.93	24.059			
4,000.0	3,714.7	3,994.6	3,884.1	28.6	17.5	-163.84	352.4	-681.0	640.4	613.5	26.82	23.875			
4,100.0	3,804.7	4,093.2	3,978.2	29.5	18.1	-163.68	366.4	-706.9	656.9	629.2	27.72	23.701			
4,200.0	3,894.6	4,191.8	4,072.3	30.4	18.7	-163.52	380.3	-732.9	673.5	644.9	28.62	23.536			
4,300.0	3,984.6	4,290.4	4,166.4	31.4	19.3	-163.37	394.3	-758.9	690.2	660.6	29.52	23.380			
4,400.0	4,074.6	4,389.0	4,260.5	32.3	19.9	-163.23	408.2	-784.9	706.8	676.3	30.42	23.232			
4,500.0	4,164.5	4,487.6	4,354.6	33.2	20.5	-163.10	422.2	-810.8	723.4	692.0	31.33	23.091			
4,600.0	4,254.5	4,586.2	4,448.6	34.1	21.2	-162.97	436.1	-836.8	740.0	707.8	32.23	22.957			
4,700.0	4,344.4	4,684.8	4,542.7	35.1	21.8	-162.85	450.0	-862.8	756.6	723.5	33.14	22.829			
4,800.0	4,434.4	4,783.4	4,636.8	36.0	22.4	-162.73	464.0	-888.7	773.2	739.2	34.05	22.707			
4,900.0	4,524.3	4,882.0	4,730.9	36.9	23.0	-162.62	477.9	-914.7	789.9	754.9	34.96	22.591			
5,000.0	4,614.3	4,980.6	4,825.0	37.8	23.6	-162.52	491.9	-940.7	806.5	770.6	35.88	22.480			
5,100.0	4,704.2	5,079.2	4,919.1	38.8	24.3	-162.41	505.8	-966.7	823.1	786.3	36.79	22.374			

CC - Min centre to center distance or convergent point, SF - min separation factor, ES - min ellipse separation

ENSIGN DIRECTIONAL

Company:	Synergy Resources	Local Co-ordinate Reference:	Well Northridge 11-4D
Project:	SEC.4-T5N-R66W	TVD Reference:	WELL @ 4753.0ft (Original Well Elev)
Reference Site:	Northridge Pad Sec.4-T5N-R66W	MD Reference:	WELL @ 4753.0ft (Original Well Elev)
Site Error:	0.0ft	North Reference:	True
Reference Well:	Northridge 11-4D	Survey Calculation Method:	Minimum Curvature
Well Error:	0.0ft	Output errors are at	2.00 sigma
Reference Wellbore	Wellbore #1	Database:	EDM den0-adp01 Server Data
Reference Design:	Plan #3 (1-12-10)	Offset TVD Reference:	Offset Datum

Northridge Pad Sec.4-T5N-R66W - Northridge 4AD - Wellbore #1 - Plan #3 (1-11-10)												Offset Site Error: 0.0 ft	
Survey Program: 0-MWD												Offset Well Error: 0.0 ft	
Reference		Offset		Semi Major Axis			Distance					Warning	
Measured Depth (ft)	Vertical Depth (ft)	Measured Depth (ft)	Vertical Depth (ft)	Reference (ft)	Offset (ft)	Highside Toolface (°)	Offset Wellbore Centre +N/-S (ft)	+E/-W (ft)	Between Centres (ft)	Between Ellipses (ft)	Minimum Separation (ft)		Separation Factor
5,200.0	4,794.2	5,177.8	5,013.2	39.7	24.9	-162.31	519.8	-992.6	839.7	802.0	37.70	22.272	
5,300.0	4,884.1	5,276.4	5,107.2	40.6	25.5	-162.22	533.7	-1,018.6	856.4	817.8	38.62	22.175	
5,400.0	4,974.1	5,375.0	5,201.3	41.6	26.1	-162.13	547.7	-1,044.6	873.0	833.5	39.54	22.082	
5,500.0	5,064.0	5,473.6	5,295.4	42.5	26.7	-162.04	561.6	-1,070.5	889.7	849.2	40.45	21.992	
5,600.0	5,154.0	5,561.8	5,379.6	43.4	27.3	-161.98	574.0	-1,093.6	906.6	865.3	41.30	21.950	
5,700.0	5,244.8	5,638.9	5,453.8	44.1	27.6	-162.05	584.0	-1,112.1	923.7	881.6	42.01	21.985	
5,800.0	5,337.0	5,715.8	5,528.4	44.8	28.0	-162.14	593.0	-1,128.9	939.8	897.1	42.64	22.040	
5,900.0	5,430.5	5,800.0	5,610.5	45.4	28.3	-162.23	601.8	-1,145.2	955.0	911.8	43.21	22.100	
6,000.0	5,525.1	5,869.3	5,678.4	45.9	28.5	-162.32	608.1	-1,157.1	969.1	925.4	43.67	22.193	
6,100.0	5,620.9	5,945.7	5,753.8	46.4	28.7	-162.42	614.2	-1,168.4	982.2	938.2	44.07	22.288	
6,200.0	5,717.6	6,022.1	5,829.4	46.9	29.0	-162.52	619.4	-1,178.0	994.4	950.0	44.40	22.397	
6,300.0	5,815.1	6,100.0	5,906.7	47.2	29.1	-162.63	623.6	-1,186.0	1,005.6	960.9	44.66	22.517	
6,400.0	5,913.3	6,174.5	5,980.9	47.6	29.3	-162.74	626.8	-1,191.9	1,015.7	970.9	44.83	22.656	
6,500.0	6,012.1	6,250.5	6,056.8	47.8	29.4	-162.85	629.1	-1,196.1	1,024.8	979.9	44.93	22.807	
6,600.0	6,111.4	6,326.4	6,132.6	48.1	29.5	-162.97	630.4	-1,198.5	1,032.9	988.0	44.97	22.971	
6,700.0	6,211.1	6,404.8	6,211.1	48.2	29.6	-163.09	630.8	-1,199.2	1,040.0	995.1	44.93	23.147	
6,800.0	6,311.0	6,504.7	6,311.0	48.4	29.7	-163.20	630.8	-1,199.2	1,044.6	999.7	44.89	23.269	
6,900.0	6,410.9	6,604.7	6,410.9	48.4	29.8	147.39	630.8	-1,199.2	1,046.0	1,001.1	44.88	23.304	
7,000.0	6,510.9	6,704.7	6,510.9	48.5	29.9	147.39	630.8	-1,199.2	1,046.0	1,000.8	45.15	23.169	
7,100.0	6,610.9	6,804.7	6,610.9	48.6	30.0	147.39	630.8	-1,199.2	1,046.0	1,000.5	45.41	23.033	
7,200.0	6,710.9	6,904.7	6,710.9	48.6	30.1	147.39	630.8	-1,199.2	1,046.0	1,000.3	45.68	22.897	
7,300.0	6,810.9	7,004.7	6,810.9	48.7	30.2	147.39	630.8	-1,199.2	1,046.0	1,000.0	45.95	22.762	
7,400.0	6,910.9	7,104.7	6,910.9	48.8	30.3	147.39	630.8	-1,199.2	1,046.0	999.7	46.23	22.626	
7,500.0	7,010.9	7,204.7	7,010.9	48.8	30.4	147.39	630.8	-1,199.2	1,046.0	999.5	46.50	22.491	
7,600.0	7,110.9	7,304.7	7,110.9	48.9	30.5	147.39	630.8	-1,199.2	1,046.0	999.2	46.78	22.357	
7,700.0	7,210.9	7,404.7	7,210.9	49.0	30.7	147.39	630.8	-1,199.2	1,046.0	998.9	47.07	22.223	
7,800.0	7,310.9	7,504.7	7,310.9	49.0	30.8	147.39	630.8	-1,199.2	1,046.0	998.6	47.35	22.089	
7,900.0	7,410.9	7,604.7	7,410.9	49.1	30.9	147.39	630.8	-1,199.2	1,046.0	998.3	47.64	21.955	
8,000.0	7,510.9	7,704.7	7,510.9	49.2	31.0	147.39	630.8	-1,199.2	1,046.0	998.0	47.93	21.823	
8,100.0	7,610.9	7,804.7	7,610.9	49.2	31.1	147.39	630.8	-1,199.2	1,046.0	997.7	48.22	21.690	
8,200.0	7,710.9	7,904.7	7,710.9	49.3	31.2	147.39	630.8	-1,199.2	1,046.0	997.4	48.52	21.558	
8,300.0	7,810.9	8,004.7	7,810.9	49.4	31.4	147.39	630.8	-1,199.2	1,046.0	997.1	48.82	21.427	
8,400.0	7,910.9	8,104.7	7,910.9	49.5	31.5	147.39	630.8	-1,199.2	1,046.0	996.8	49.11	21.296	
8,454.1	7,965.0	8,158.8	7,965.0	49.5	31.6	147.39	630.8	-1,199.2	1,046.0	996.7	49.28	21.226	

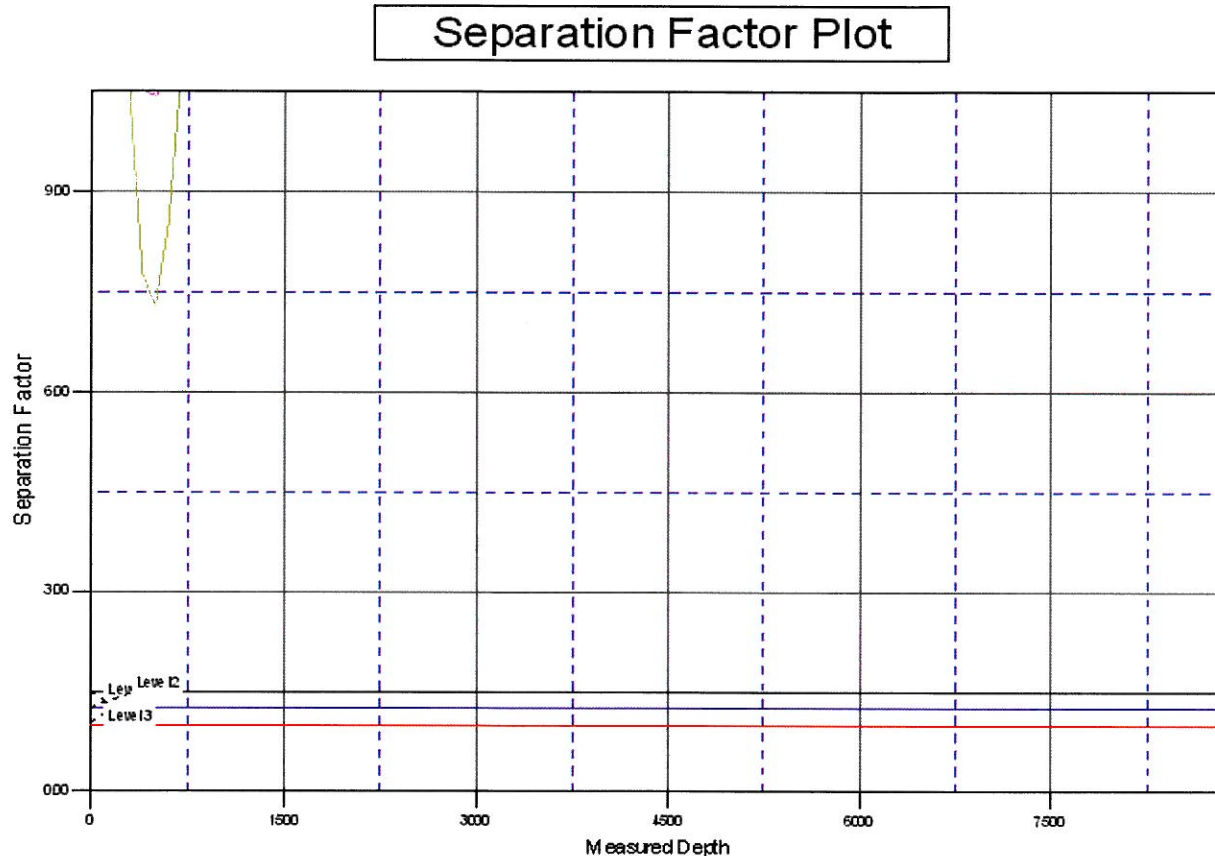
Company:	Synergy Resources	Local Co-ordinate Reference:	Well Northridge 11-4D
Project:	SEC.4-T5N-R66W	TVD Reference:	WELL @ 4753.0ft (Original Well Elev)
Reference Site:	Northridge Pad Sec.4-T5N-R66W	MD Reference:	WELL @ 4753.0ft (Original Well Elev)
Site Error:	0.0ft	North Reference:	True
Reference Well:	Northridge 11-4D	Survey Calculation Method:	Minimum Curvature
Well Error:	0.0ft	Output errors are at	2.00 sigma
Reference Wellbore	Wellbore #1	Database:	EDM den0-adp01 Server Data
Reference Design:	Plan #3 (1-12-10)	Offset TVD Reference:	Offset Datum

Reference Depths are relative to WELL @ 4753.0ft (Original Well Elev) Coordinates are relative to: Northridge 11-4D
 Offset Depths are relative to Offset Datum Coordinate System is US State Plane 1983, Colorado Northern Zone
 Central Meridian is 105° 30' 0.000 W ° Grid Convergence at Surface is: 0.46°



Company:	Synergy Resources	Local Co-ordinate Reference:	Well Northridge 11-4D
Project:	SEC.4-T5N-R66W	TVD Reference:	WELL @ 4753.0ft (Original Well Elev)
Reference Site:	Northridge Pad Sec.4-T5N-R66W	MD Reference:	WELL @ 4753.0ft (Original Well Elev)
Site Error:	0.0ft	North Reference:	True
Reference Well:	Northridge 11-4D	Survey Calculation Method:	Minimum Curvature
Well Error:	0.0ft	Output errors are at	2.00 sigma
Reference Wellbore	Wellbore #1	Database:	EDM den0-adp01 Server Data
Reference Design:	Plan #3 (1-12-10)	Offset TVD Reference:	Offset Datum

Reference Depths are relative to WELL @ 4753.0ft (Original Well Elev) Coordinates are relative to: Northridge 11-4D
Offset Depths are relative to Offset Datum Coordinate System is US State Plane 1983, Colorado Northern Zone
Central Meridian is 105° 30' 0.000 W ° Grid Convergence at Surface is: 0.46°



LEGEND

thridge 4AD, Wellbore #1, Plan #3 (1-11-10) VD Northridge 21-4D, Wellbore #1, Plan #3 (1-12-10) VD