

EOG RESOURCES, INC.

Well location, FOX CREEK #01-35H, located as shown in the NW 1/4 NW 1/4 of Section 35, T12N, R63W, 6th P.M., Weld County, Colorado.

BASIS OF ELEVATION

SPOT ELEVATION AT THE NORTHEAST CORNER OF SECTION 1, T11N, R63W, 6th P.M. TAKEN FROM THE HEREFORD, QUADRANGLE, COLORADO, WELD COUNTY, 7.5 MINUTE QUAD (TOPOGRAPHIC MAP) PUBLISHED BY THE UNITED STATES DEPARTMENT OF THE INTERIOR, GEOLOGICAL SURVEY. SAID ELEVATION IS MARKED AS BEING 5352 FEET.

BASIS OF BEARINGS

BASIS OF BEARINGS IS A G.P.S. OBSERVATION.



SCALE



CERTIFICATE

THIS IS TO CERTIFY THAT THE ABOVE PLAT WAS PREPARED FROM FIELD NOTES OF ACTUAL SURVEYS MADE BY ME OR UNDER MY SUPERVISION AND THAT THE SAME ARE TRUE AND CORRECT TO THE BEST OF MY KNOWLEDGE AND BELIEF.

REGISTERED LAND SURVEYOR
REGISTRATION NO. 17492
STATE OF COLORADO

2008 Private Alum. Cap,
PLS #38073, 0.5' Below
Ground, Old Buried Stone,
Wood Post
Lat: 40.973136°
Long: 104.409419°

2010 UELS Alum.
Cap, RLS #17492,
In Road Intersection
Lat: 40.973422°
Long: 104.390831°

1921 Brass Cap,
0.5' High, N-S-W
Fence Corner
Lat: 40.956681°
Long: 104.409533°

2009 UELS Alum.
Cap, Set In Gravel
Road 4" Deep
Lat: 40.956686°
Long: 104.390758°

2008 Private Alum. Cap,
PLS #38073, 0.5' Below
Ground, Old Buried Stone,
Wood Post
Lat: 40.973136°
Long: 104.409419°

2010 UELS Alum.
Cap, RLS #17492,
In Road Intersection
Lat: 40.973422°
Long: 104.390831°

1921 Brass Cap,
0.5' High, N-S-W
Fence Corner
Lat: 40.956681°
Long: 104.409533°

2009 UELS Alum.
Cap, Set In Gravel
Road 4" Deep
Lat: 40.956686°
Long: 104.390758°

2008 Private Alum. Cap,
PLS #38073, 0.5' Below
Ground, Old Buried Stone,
Wood Post
Lat: 40.973136°
Long: 104.409419°

2010 UELS Alum.
Cap, RLS #17492,
In Road Intersection
Lat: 40.973422°
Long: 104.390831°

1921 Brass Cap,
0.5' High, N-S-W
Fence Corner
Lat: 40.956681°
Long: 104.409533°

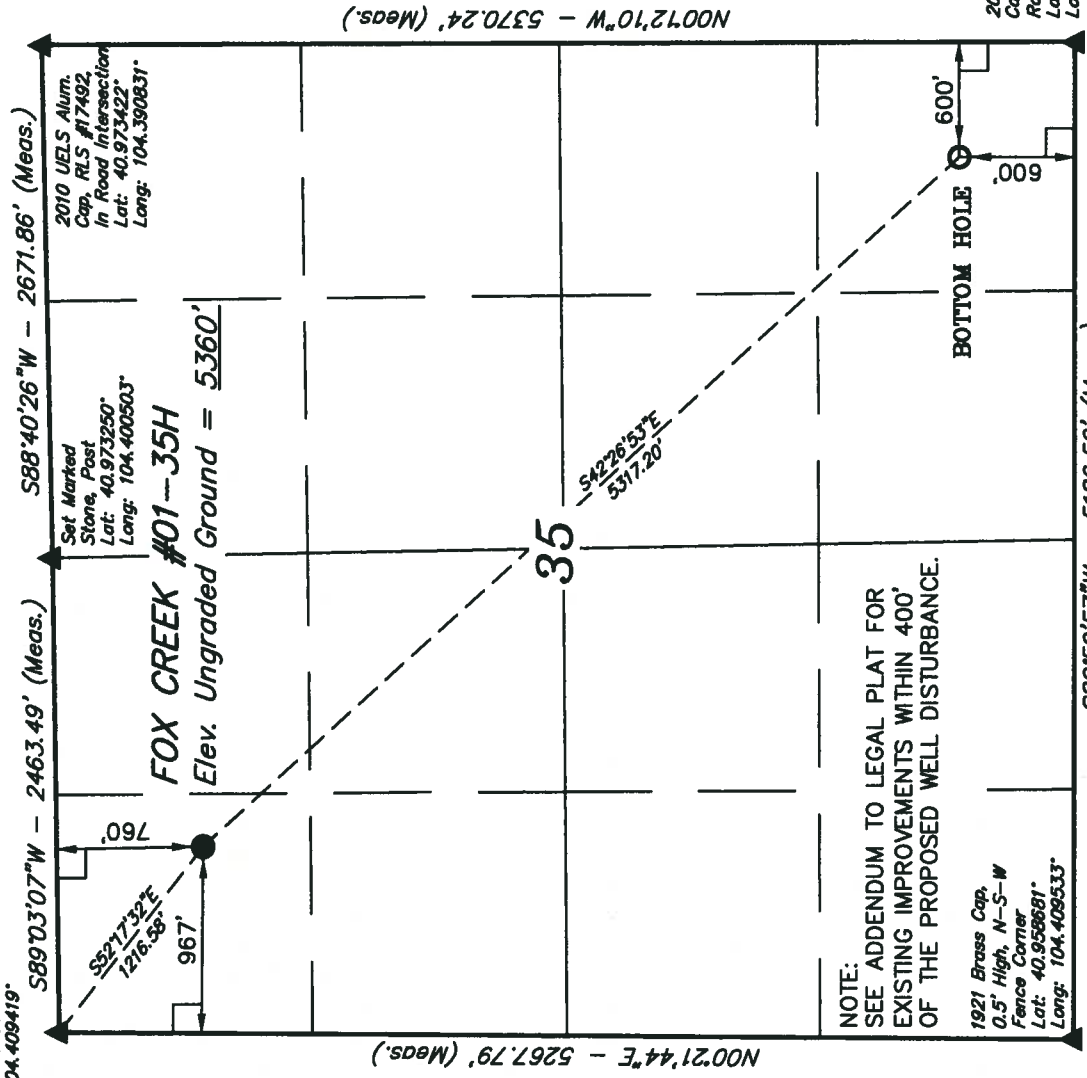
2009 UELS Alum.
Cap, Set In Gravel
Road 4" Deep
Lat: 40.956686°
Long: 104.390758°

2008 Private Alum. Cap,
PLS #38073, 0.5' Below
Ground, Old Buried Stone,
Wood Post
Lat: 40.973136°
Long: 104.409419°

2010 UELS Alum.
Cap, RLS #17492,
In Road Intersection
Lat: 40.973422°
Long: 104.390831°

1921 Brass Cap,
0.5' High, N-S-W
Fence Corner
Lat: 40.956681°
Long: 104.409533°

T12N, R63W, 6th P.M.



PDOP = 2.6

NAD 83 (TARGET BOTTOM HOLE)		NAD 83 (SURFACE LOCATION)	
LATITUDE = 40°57'37.20" (40.960333)	LATITUDE = 40°58'15.94" (40.971084)	LATITUDE = 40°58'15.94" (40.971084)	LATITUDE = 40°58'15.94" (40.971084)
LONGITUDE = 104°23'34.58" (104.392939)	LONGITUDE = 104°24'21.38" (104.405933)	LONGITUDE = 104°24'21.38" (104.405933)	LONGITUDE = 104°24'21.38" (104.405933)
NAD 27 (TARGET BOTTOM HOLE)		NAD 27 (SURFACE LOCATION)	
LATITUDE = 40°57'37.28" (40.960350)	LATITUDE = 40°58'16.00" (40.971111)	LATITUDE = 40°58'16.00" (40.971111)	LATITUDE = 40°58'16.00" (40.971111)
LONGITUDE = 104°23'32.74" (104.392428)	LONGITUDE = 104°24'19.52" (104.405422)	LONGITUDE = 104°24'19.52" (104.405422)	LONGITUDE = 104°24'19.52" (104.405422)
STATE PLANE NAD 83 (COLORADO NORTH)		STATE PLANE NAD 83 (COLORADO NORTH)	
TARGET BOTTOM HOLE: N: 1594612.228 E: 3305771.396	SURFACE LOCATION: N: 1598486.966 E: 3302133.953	SURFACE LOCATION: N: 1598486.966 E: 3302133.953	SURFACE LOCATION: N: 1598486.966 E: 3302133.953
STATE PLANE NAD 27 (COLORADO NORTH)		STATE PLANE NAD 27 (COLORADO NORTH)	
TARGET BOTTOM HOLE: N: 594608.902 E: 2305920.848	SURFACE LOCATION: N: 598486.576 E: 2302283.446	SURFACE LOCATION: N: 598486.576 E: 2302283.446	SURFACE LOCATION: N: 598486.576 E: 2302283.446

LEGEND:

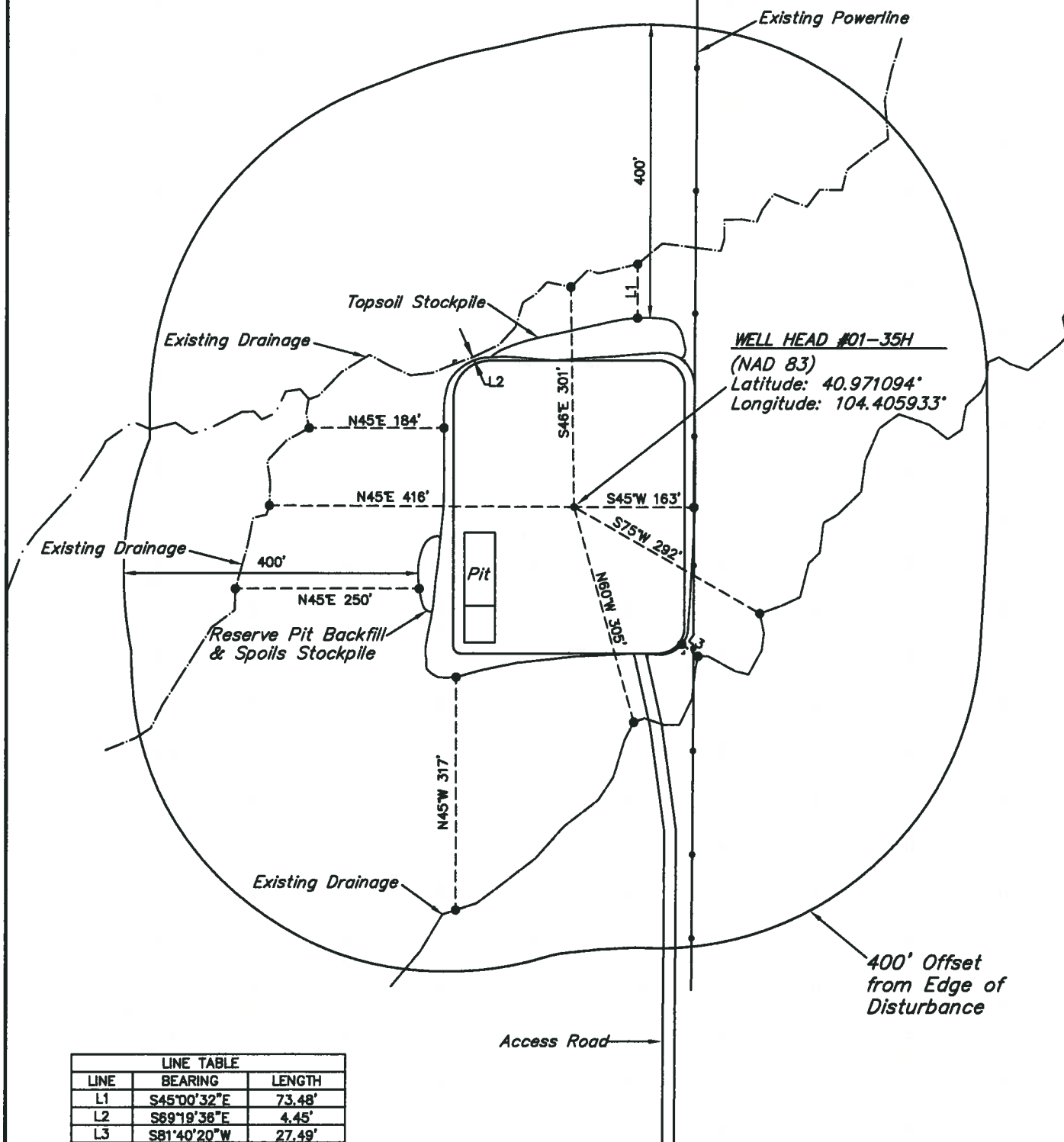
- 90° SYMBOL
- PROPOSED WELL HEAD.
- SECTION CORNERS LOCATED.



EOG RESOURCES, INC.
ADDENDUM TO LEGAL PLAT FOR
FOX CREEK #01-35H
SECTION 35, T12N, R63W, 6th P.M.
760' FNL 967' FWL



SCALE: 1" = 200'
DATE: 01-20-10
DRAWN BY: D.R.B.



LINE TABLE		
LINE	BEARING	LENGTH
L1	S45°00'32"E	73.48'
L2	S69°19'36"E	4.45'
L3	S81°40'20"W	27.49'