



Berry Petroleum Company

1999 Broadway, Suite 3700
Denver, CO 80202

Main (303) 999-4400
Fax (303) 999-4401

www.bry.com

February 8, 2010

Bruce Vollertsen
Land Negotiator
Mid-Continent Business Unit
Oxy USA, Inc.
5 Greenway Plaza, Suite 110
Houston, TX 77046

RE: 30 Day Notice Requirement (Rule 305 and 306)
OXY 22-24D, 22-23D, 22-22D, 22-21D, 22-20D,
22-19D, 22-18D, 22-17D, 22-32D, 22-31D, 22-30D,
22-29D, 22-28D, 22-27D, 22-26D, 22-25D
E22 697 Pad – SWNW, Sec. 22 – 6S 97W
Garfield County, Colorado

Dear Mr. Vollertsen:

Please be advised that Berry Petroleum Company will be filing permits for the wells referenced above with the Colorado Oil and Gas Conservation Commission.

The enclosed notification, pursuant to Rule 305 and 306, is required as part of the permitting process. If applicable, please sign and date where indicated and return to my attention.

Please contact the undersigned if you have any questions.

Thank you for your assistance in this matter.

Very truly yours,

Jerry L. Gonzalez
Senior Landman
313-999-4207

:enclosures

cc: Janni Keidel
Land Well files

NOTICE REQUIREMENTS (RULE 305)

E22 697 Pad

**Re: Well Names— OXY 22-24D, 22-23D, 22-22D, 22-21D, 22-20D,
22-19D, 22-18D, 22-17D, 22-32D, 22-31D, 22-30D,
22-29D, 22-28D, 22-27D, 22-26D, 22-25D
E22 697 Pad, SWNW, Section 22, 6S 97W,
Garfield County, CO**

In accordance with the Colorado Oil and Gas Conservation Commission for Notices of Oil and Gas Operations, Rule 305, the following information is required to be provided:

- Operations on the above referenced wells are estimated to commence July 25, 2010.
- The operator will be: Berry Petroleum Company
1999 Broadway, Suite # 3700
Denver, Colorado 80202
(303) 999-4400
- You may contact: Jerry L. Gonzalez, Senior Landman at (303) 999-4207, if you have any questions regarding this notice.

OXY 22-24D

The legal description of the lands upon which operations will be conducted are:

Surface Hole: 2,137' FNL and 657' FWL, Sec. 22, T6S, R97W

Bottom Hole: 197' FNL and 2,098' FWL, Sec. 22, T6S, R97W

OXY 22-23D

The legal description of the lands upon which operations will be conducted are:

Surface Hole: 2,152' FNL and 655' FWL, Sec. 22, T6S, R97W

Bottom Hole: 554' FNL and 2,008' FWL, Sec. 22, T6S, R97W

OXY 22-22D

The legal description of the lands upon which operations will be conducted are:

Surface Hole: 2,167' FNL and 654' FWL, Sec. 22, T6S, R97W

Bottom Hole: 853' FNL and 2,118' FWL, Sec. 33, T6S, R97W

Page 2

OXY 22-24D, 22-23D, 22-22D, 22-21D, 22-20D,
22-19D, 22-18D, 22-17D, 22-32D, 22-31D, 22-30D,
22-29D, 22-28D, 22-27D, 22-26D, 22-25D

E22 697 Pad, SWNW, Section 22, 6S 97W,

Garfield County, CO

OXY USA Inc.

February 8, 2010

OXY 22-21D

The legal description of the lands upon which operations will be conducted are:

Surface Hole: 2,182' FNL and 652' FWL, Sec. 22, T6S, R97W

Bottom Hole: 1,200' FNL and 2,004' FWL, Sec. 22, T6S, R97W

OXY 22-20D

The legal description of the lands upon which operations will be conducted are:

Surface Hole: 2197' FNL and 650' FWL, Sec. 22, T6S, R97W

Bottom Hole: 1501' FNL and 2067' FWL, Sec. 22, T6S, R97W

OXY 22-19D

The legal description of the lands upon which operations will be conducted are:

Surface Hole: 2,212' FNL and 648' FWL, Sec. 22, T6S, R97W

Bottom Hole: 1,836' FNL and 2,100' FWL, Sec. 22, T6S, R97W

OXY 22-18D

The legal description of the lands upon which operations will be conducted are:

Surface Hole: 2,227' FNL and 646' FWL, Sec. 22, T6S, R97W

Bottom Hole: 2,164' FNL and 2,046' FWL, Sec. 22, T6S, R97W

OXY 22-17D

The legal description of the lands upon which operations will be conducted are:

Surface Hole: 2,242' FNL and 644' FWL, Sec. 22, T6S, R97W

Bottom Hole: 2,481' FNL and 2,015' FWL, Sec. 22, T6S, R97W

Page 3

OXY 22-24D, 22-23D, 22-22D, 22-21D, 22-20D,
22-19D, 22-18D, 22-17D, 22-32D, 22-31D, 22-30D,
22-29D, 22-28D, 22-27D, 22-26D, 22-25D

E22 697 Pad, SWNW, Section 22, 6S 97W,

Garfield County, CO

OXY USA Inc.

February 8, 2010

OXY 22-32D

The legal description of the lands upon which operations will be conducted are:

Surface Hole: 2,136' FNL and 647' FWL, Sec. 22, T6S, R97W

Bottom Hole: 181' FNL and 919' FWL, Sec. 22, T6S, R97W

OXY 22-31D

The legal description of the lands upon which operations will be conducted are:

Surface Hole: 2,151' FNL and 646' FWL, Sec. 22, T6S, R97W

Bottom Hole: 508' FNL and 726' FWL, Sec. 22, T6S, R97W

OXY 22-30D

The legal description of the lands upon which operations will be conducted are:

Surface Hole: 2,166' FNL and 644' FWL, Sec. 22, T6S, R97W

Bottom Hole: 858' FNL and 646' FWL, Sec. 22, T6S, R97W

OXY 22-29D

The legal description of the lands upon which operations will be conducted are:

Surface Hole: 2,181' FNL and 642' FWL, Sec. 22, T6S, R97W

Bottom Hole: 1,177' FNL and 591' FWL, Sec. 22, T6S, R97W

OXY 22-28D

The legal description of the lands upon which operations will be conducted are:

Surface Hole: 2,196' FNL and 640' FWL, Sec. 22, T6S, R97W

Bottom Hole: 1,530' FNL and 562' FWL, Sec. 22, T6S, R97W

Page 4

OXY 22-24D, 22-23D, 22-22D, 22-21D, 22-20D,
22-19D, 22-18D, 22-17D, 22-32D, 22-31D, 22-30D,
22-29D, 22-28D, 22-27D, 22-26D, 22-25D

E22 697 Pad, SWNW, Section 22, 6S 97W,

Garfield County, CO

OXY USA Inc.

February 8, 2010

OXY 22-27D

The legal description of the lands upon which operations will be conducted are:

Surface Hole: 2,211' FNL and 638' FWL, Sec. 22, T6S, R97W

Bottom Hole: 1,856' FNL and 553' FWL, Sec. 22, T6S, R97W

OXY 22-26D

The legal description of the lands upon which operations will be conducted are:

Surface Hole: 2,225' FNL and 636' FWL, Sec. 22, T6S, R97W

Bottom Hole: 2,181' FNL and 586' FWL, Sec. 22, T6S, R97W

OXY 22-25D

The legal description of the lands upon which operations will be conducted are:

Surface Hole: 2,477' FNL and 668' FWL, Sec. 22, T6S, R97W

Bottom Hole: 2,240' FNL and 634' FWL, Sec. 22, T6S, R97W

- The surface owner has the responsibility for notifying any affected tenant of the proposed operations.
- A brochure describing surface owner rights is available upon request from:
Colorado Oil and Gas Conservation Commission
1120 Lincoln Street
Suite 801
Denver, Co 80203

By signing below, the surface owner waives the above notification requirements of Rule 305.

OXY USA Inc.

By: _____

Printed Name: _____

Title: _____

Date: _____

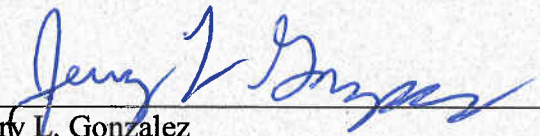
SURFACE OWNER CONSULTATION (RULE 306)
E22 697 Pad

Berry Petroleum Company confirms that the Surface Owner Consultation requirements of Rule 306 have been completed or waived for the following proposed well locations.

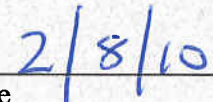
Well Names	OXY 22-24D, 22-23D, 22-22D, 22-21D, 22-20D, 22-19D, 22-18D, 22-17D, 22-32D, 22-31D, 22-30D, 22-29D, 22-28D, 22-27D, 22-26D, 22-25D E22 697 Pad, SWNW, Section 22, 6S 97W, Garfield County, CO
-------------------	--

Road Description: Existing roadway use and new construction as required for access was previously agreed upon by all parties.

Berry Petroleum Company



Jerry L. Gonzalez
Senior Landman



Date

T6S, R97W, 6th P.M.

BERRY PETROLEUM COMPANY

Well location, OXY 22-24D, located as shown in the SW 1/4 NW 1/4 of Section 22, T6S, R97W, 6th P.M., Garfield County, Colorado.

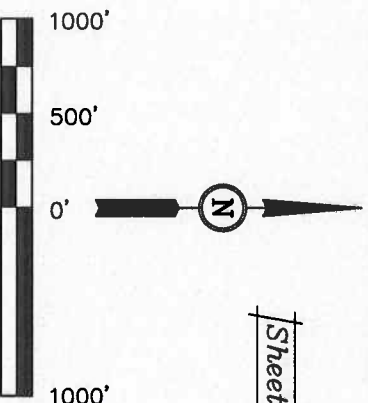
BASIS OF ELEVATION

SPOT ELEVATION AT THE NORTHWEST CORNER OF SECTION 30, T5S, R95W, 6th P.M. TAKEN FROM THE FORKED GULCH QUADRANGLE, COLORADO, GARFIELD COUNTY, 7.5 MINUTE SERIES (TOPOGRAPHICAL MAP) PUBLISHED BY THE UNITED STATES DEPARTMENT OF THE INTERIOR, GEOLOGICAL SURVEY. SAID ELEVATION IS MARKED AS BEING 5966 FEET.

BASIS OF BEARINGS

BASIS OF BEARINGS IS A G.P.S. OBSERVATION.

Sheet 1h of 12



SCALE

CERTIFICATE

THIS IS TO CERTIFY THAT THE ABOVE PLAT WAS PREPARED AND LOCATION AS SHOWN WAS STAKED ON THE GROUND FROM FIELD NOTES OF ACTUAL SURVEYS MADE BY ME OR UNDER MY SUPERVISION AND THAT THE SAME ARE TRUE AND CORRECT TO THE BEST OF MY KNOWLEDGE AND BELIEF.

REGISTERED LAND SURVEYOR
REGISTRATION NO. 12892
STATE OF COLORADO

UTAH ENGINEERING & LAND SURVEYING

85 SOUTH 200 EAST - VERNAL, UTAH 84078
(435) 789-1017

LEGEND:

- = 90° SYMBOL
- = PROPOSED WELL HEAD.
- ▲ = SECTION CORNERS LOCATED.

NAD 83 (TARGET BOTTOM HOLE)		NAD 83 (SURFACE LOCATION)	
LATITUDE = 39°30'54.69" (39.515193)		LATITUDE = 39°30'35.52" (39.509865)	
LONGITUDE = 108°12'28.84" (108.208010)		LONGITUDE = 108°12'47.20" (108.213110)	
NAD 27 (TARGET BOTTOM HOLE)		NAD 27 (SURFACE LOCATION)	
LATITUDE = 39°30'54.78" (39.515215)		LATITUDE = 39°30'35.60" (39.509888)	
LONGITUDE = 108°12'26.54" (108.207372)		LONGITUDE = 108°12'44.90" (108.212472)	

PDOP = 2.0

SCALE

1" = 1000'

DATE SURVEYED:

DATE DRAWN:

08-10-09

09-03-09

PARTY

B.J. B.B. C.H.

REFERENCES

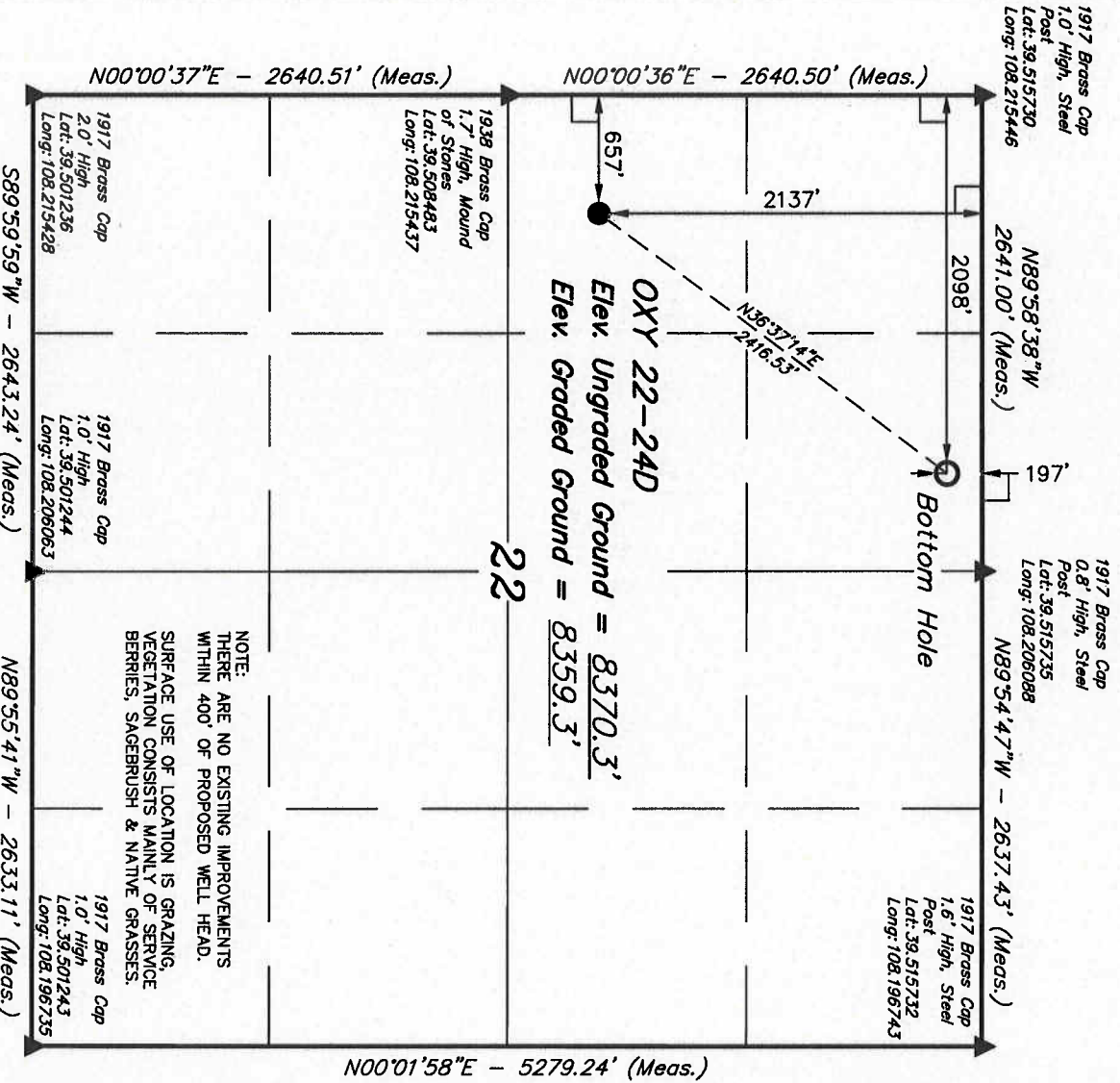
G.L.O. PLAT

WEATHER

WARM

FILE

BERRY PETROLEUM COMPANY



T6S, R97W, 6th P.M.

1917 Brass Cap
1.0' High, Steel
Post
Lat: 39.515730
Long: 108.215446

N89°58'38"W - 2641.00' (Meas.)

N89°54'47"W - 2637.43' (Meas.)

1917 Brass Cap
1.6' High, Steel
Post
Lat: 39.515732
Long: 108.196743

1917 Brass Cap
0.8' High, Steel
Post
Lat: 39.515735
Long: 108.206088

Bottom Hole

SPOT ELEVATION AT THE NORTHWEST CORNER OF SECTION 30, T5S, R95W, 6th P.M. TAKEN FROM THE FORKED GULCH QUADRANGLE, COLORADO, GARFIELD COUNTY, 7.5 MINUTE SERIES (TOPOGRAPHICAL MAP) PUBLISHED BY THE UNITED STATES DEPARTMENT OF THE INTERIOR, GEOLOGICAL SURVEY. SAID ELEVATION IS MARKED AS BEING 5966 FEET.

BASIS OF BEARINGS

BASIS OF BEARINGS IS A G.P.S. OBSERVATION.

BASIS OF ELEVATION

Well location, OXY 22-23D, located as shown in the SW 1/4 NW 1/4 of Section 22, T6S, R97W, 6th P.M., Garfield County, Colorado.

BERRY PETROLEUM COMPANY

N00°00'36"E - 2640.50' (Meas.)

655'

2152'

2008'

554'

OXY 22-23D

Elev. Ungraded Ground = 8370.1'

Elev. Graded Ground = 8359.3'

22

1938 Brass Cap
1.7' High, Mound
of Stones
Lat: 39.508483
Long: 108.215437

1917 Brass Cap
2.0' High
Lat: 39.501236
Long: 108.215428

1917 Brass Cap
1.0' High
Lat: 39.501244
Long: 108.206063

1917 Brass Cap
1.0' High
Lat: 39.501243
Long: 108.196735

S89°59'59"W - 2643.24' (Meas.)

N89°55'41"W - 2633.11' (Meas.)

N00°01'58"E - 5279.24' (Meas.)

NOTE:
THERE ARE NO EXISTING IMPROVEMENTS
WITHIN 400' OF PROPOSED WELL HEAD.
SURFACE USE OF LOCATION IS GRAZING,
VEGETATION CONSISTS MAINLY OF SERVICE
BERRIES, SAGEBRUSH & NATIVE GRASSES.

LEGEND:

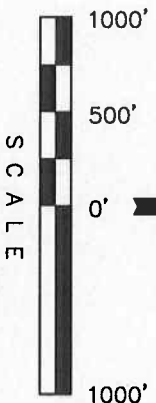
— = 90° SYMBOL

● = PROPOSED WELL HEAD.

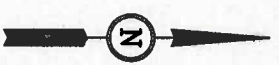
▲ = SECTION CORNERS LOCATED.

NAD 83 (TARGET BOTTOM HOLE)		NAD 83 (SURFACE LOCATION)	
LATITUDE = 39°30'51.17" (39.514215)	LATITUDE = 39°30'51.17" (39.514215)	LATITUDE = 39°30'51.17" (39.514215)	LATITUDE = 39°30'51.17" (39.514215)
LONGITUDE = 108°12'29.98" (108.208328)	LONGITUDE = 108°12'29.98" (108.208328)	LONGITUDE = 108°12'47.22" (108.213116)	LONGITUDE = 108°12'47.22" (108.213116)
NAD 27 (TARGET BOTTOM HOLE)		NAD 27 (SURFACE LOCATION)	
LATITUDE = 39°30'51.25" (39.514237)	LATITUDE = 39°30'51.25" (39.514237)	LATITUDE = 39°30'51.25" (39.514237)	LATITUDE = 39°30'51.25" (39.514237)
LONGITUDE = 108°12'27.69" (108.207691)	LONGITUDE = 108°12'27.69" (108.207691)	LONGITUDE = 108°12'44.93" (108.212479)	LONGITUDE = 108°12'44.93" (108.212479)

PDOP = 1.4



SCALE



Sheet 1g of 12

CERTIFICATE

THIS IS TO CERTIFY THAT THE ABOVE PLAT WAS PREPARED AND LOCATION AS SHOWN WAS STAKED ON THE GROUND FROM FIELD NOTES OF ACTUAL SURVEYS MADE BY ME OR UNDER MY SUPERVISION AND THAT THE SAME ARE TRUE AND CORRECT TO THE BEST OF MY KNOWLEDGE AND BELIEF.

REGISTERED LAND SURVEYOR
REGISTRATION NO. 17492
STATE OF COLORADO

UTAH ENGINEERING & LAND SURVEYING

85 SOUTH 200 EAST - VERNAL, UTAH 84078
(435) 789-1017

SCALE		DATE SURVEYED:		DATE DRAWN:	
1" = 1000'		08-10-09		09-03-09	
PARTY		REFERENCES		FILE	
B.J. B.B. C.H.		G.L.O. PLAT		BERRY PETROLEUM COMPANY	
WEATHER		FILE		BERRY PETROLEUM COMPANY	
WARM					

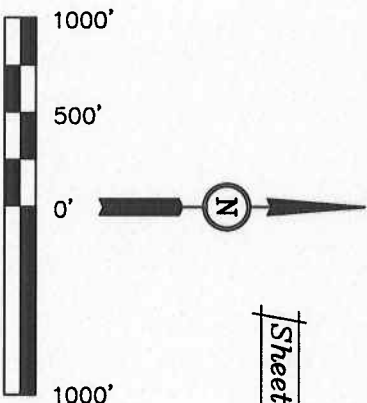
BERRY PETROLEUM COMPANY

BASIS OF ELEVATION



BASIS OF BEARINGS

BASIS OF BEARINGS IS A G.P.S. OBSERVATION.



Sheet 1f of 12

THIS IS TO CERTIFY THAT THE ABOVE PLAT WAS PREPARED AND
LOCATION AS SHOWN WAS STAKED ON THE GROUND FROM FIELD
NOTES OF ACTUAL SURVEYS MADE BY ME OR UNDER MY
SUPERVISION AND THAT THE SAME ARE TRUE AND CORRECT TO
THE BEST OF MY KNOWLEDGE AND BELIEF.

CERTIFICATE

UNTAH ENGINEERING & LAND SURVEYING

85 SOUTH 200 EAST - VERNAL, UTAH 84078

(435) 789-1017

PDOP = 1.4		SCALE	1" = 1000'	DATE SURVEYED:	DATE DRAWN:
NAD 83 (SURFACE LOCATION)		PARTY		08-10-09	09-03-09
LATITUDE = 39°30'35.22" (39.509784)		B.U.	B.B.	C.H.	
LONGITUDE = 108°12'47.24" (108.213123)					
NAD 27 (SURFACE LOCATION)		WEATHER		FILE	
LATITUDE = 39°30'35.30" (39.509806)		WARM		BERRY PETROLEUM COMPANY	
LONGITUDE = 108°12'44.95" (108.212485)					
NAD 83 (TARGET BOTTOM HOLE)					
LATITUDE = 39°30'48.21" (39.513392)					
LONGITUDE = 108°12'28.58" (108.207936)					
NAD 27 (TARGET BOTTOM HOLE)					
LATITUDE = 39°30'48.29" (39.513415)					
LONGITUDE = 108°12'26.28" (108.207301)					

T6S, R97W, 6th P.M.

1917 Brass Cap
1.0' High, Steel
Post
Lat: 39.515730
Long: 108.215446

N89°58'38"W
2641.00' (Meas.)

N89°54'47"W - 2637.43' (Meas.)

1917 Brass Cap
0.8' High, Steel
Post
Lat: 39.515735
Long: 108.206088

1917 Brass Cap
1.6' High, Steel
Post
Lat: 39.515732
Long: 108.196743

N00°00'36"E - 2640.50' (Meas.)

N00°00'37"E - 2640.51' (Meas.)

2182'
2004'
1200'
652'

1938 Brass Cap
1.7' High, Mound
of Stones
Lat: 39.508483
Long: 108.215437

1917 Brass Cap
2.0' High
Lat: 39.501236
Long: 108.215428

S89°59'59"W - 2643.24' (Meas.)

N89°55'41"W - 2633.11' (Meas.)

OXY 22-21D
22
Elev. Ungraded Ground = 8369.5'
Elev. Graded Ground = 8359.3'

NOTE:
THERE ARE NO EXISTING IMPROVEMENTS
WITHIN 400' OF PROPOSED WELL HEAD.
SURFACE USE OF LOCATION IS GRAZING,
VEGETATION CONSISTS MAINLY OF SERVICE
BERRIES, SAGEBRUSH & NATIVE GRASSES.

N00°01'58"E - 5279.24' (Meas.)

Bottom Hole

LEGEND:

- = 90° SYMBOL
- = PROPOSED WELL HEAD.
- ▲ = SECTION CORNERS LOCATED.

NAD 83 (TARGET BOTTOM HOLE)		NAD 83 (SURFACE LOCATION)	
LATITUDE = 39°30'44.79" (39.512442)	LATITUDE = 39°30'35.07" (39.509743)	LATITUDE = 39°30'44.87" (39.512464)	LATITUDE = 39°30'35.15" (39.509765)
LONGITUDE = 108°12'30.03" (108.208342)	LONGITUDE = 108°12'47.27" (108.213129)	LONGITUDE = 108°12'27.73" (108.207704)	LONGITUDE = 108°12'44.97" (108.212492)

PDOP = 1.4

BERRY PETROLEUM COMPANY

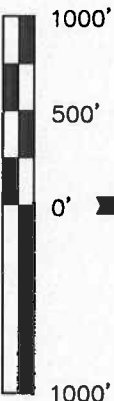
Well location, OXY 22-21D, located as shown in the SW 1/4 NW 1/4 of Section 22, T6S, R97W, 6th P.M., Garfield County, Colorado.

BASIS OF ELEVATION

SPOT ELEVATION AT THE NORTHWEST CORNER OF SECTION 30, T5S, R95W, 6th P.M. TAKEN FROM THE FORKED GULCH QUADRANGLE, COLORADO, GARFIELD COUNTY, 7.5 MINUTE SERIES (TOPOGRAPHICAL MAP) PUBLISHED BY THE UNITED STATES DEPARTMENT OF THE INTERIOR, GEOLOGICAL SURVEY. SAID ELEVATION IS MARKED AS BEING 5966 FEET.

BASIS OF BEARINGS

BASIS OF BEARINGS IS A G.P.S. OBSERVATION.



SCALE

CERTIFICATE

THIS IS TO CERTIFY THAT THE ABOVE PLAT WAS PREPARED AND LOCATION AS SHOWN WAS STAKED ON THE GROUND FROM FIELD NOTES OF ACTUAL SURVEYS MADE BY ME OR UNDER MY SUPERVISION AND THAT THE SAME ARE TRUE AND CORRECT TO THE BEST OF MY KNOWLEDGE AND BELIEF.

REGISTERED AND SURVEYOR
REGISTRATION NO. 17492
STATE OF COLORADO

UTAH ENGINEERING & LAND SURVEYING

85 SOUTH 200 EAST - VERNAL, UTAH 84078
(435) 789-1017

SCALE		DATE SURVEYED:		DATE DRAWN:	
1" = 1000'		08-10-09		09-03-09	
PARTY		REFERENCES		FILE	
B.J. B.B. C.H.		G.L.O. PLAT		BERRY PETROLEUM COMPANY	
WEATHER					
WARM					

Sheet 1e of 12

BERRY PETROLEUM COMPANY

Well location, OXY 22-20D, located as shown in the SW 1/4 NW 1/4 of Section 22, T6S, R97W, 6th P.M., Garfield County, Colorado.

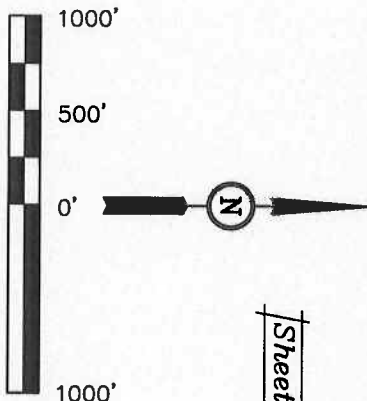
BASIS OF ELEVATION

SPOT ELEVATION AT THE NORTHWEST CORNER OF SECTION 30, T5S, R95W, 6th P.M. TAKEN FROM THE FORKED GULCH QUADRANGLE, COLORADO, GARFIELD COUNTY, 7.5 MINUTE SERIES (TOPOGRAPHICAL MAP) PUBLISHED BY THE UNITED STATES DEPARTMENT OF THE INTERIOR, GEOLOGICAL SURVEY. SAID ELEVATION IS MARKED AS BEING 5966 FEET.

BASIS OF BEARINGS

BASIS OF BEARINGS IS A G.P.S. OBSERVATION.

Sheet 1d of 12



SCALE

CERTIFICATE

THIS IS TO CERTIFY THAT THE ABOVE PLAT WAS PREPARED AND LOCATION AS SHOWN WAS STAKED ON THE GROUND FROM FIELD NOTES OF ACTUAL SURVEYS MADE BY ME OR UNDER MY SUPERVISION AND THAT THE SAME ARE TRUE AND CORRECT TO THE BEST OF MY KNOWLEDGE AND BELIEF.

REGISTERED LAND SURVEYOR
REGISTRATION NO. 12345
STATE OF COLORADO

UTAH ENGINEERING & LAND SURVEYING

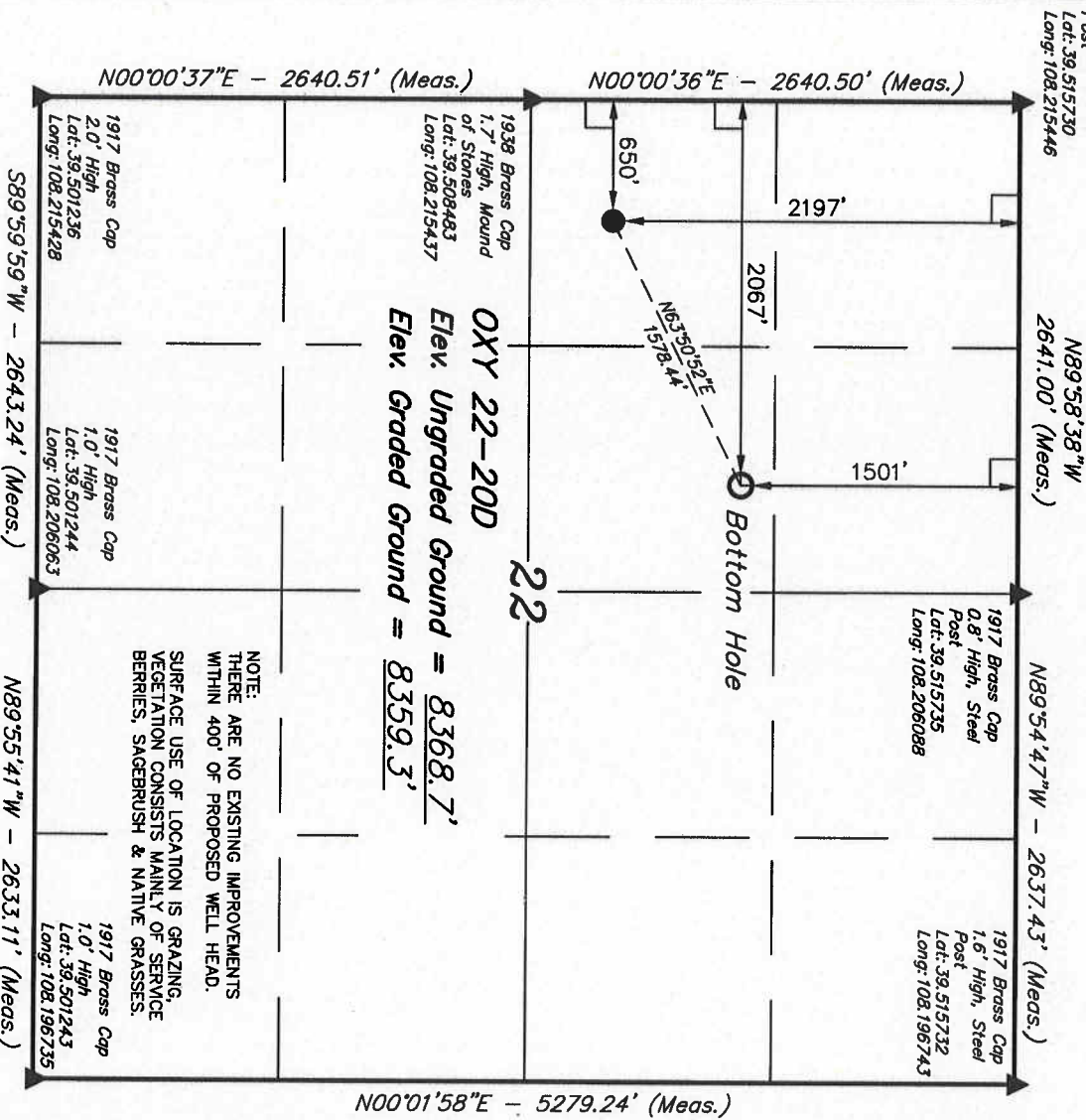
86 SOUTH 200 EAST - VERNAL, UTAH 84078
(435) 789-1017

SCALE	DATE SURVEYED:	DATE DRAWN:
1" = 1000'	08-10-09	09-03-09

PARTY	REFERENCES
B.J. B.B. C.H.	G.L.O. PLAT

WEATHER	FILE
WARM	BERRY PETROLEUM COMPANY

T6S, R97W, 6th P.M.



LEGEND:

- = 90° SYMBOL
- = PROPOSED WELL HEAD.
- ▲ = SECTION CORNERS LOCATED.

NAD 83 (TARGET BOTTOM HOLE)		NAD 83 (SURFACE LOCATION)	
LATITUDE = 39°30'41.82" (39.511616)	LATITUDE = 39°30'34.93" (39.509702)	LATITUDE = 39°30'41.90" (39.511638)	LATITUDE = 39°30'35.01" (39.509725)
LONGITUDE = 108°12'29.23" (108.208118)	LONGITUDE = 108°12'47.29" (108.213136)	LONGITUDE = 108°12'26.93" (108.207481)	LONGITUDE = 108°12'44.99" (108.212498)
NAD 27 (TARGET BOTTOM HOLE)		NAD 27 (SURFACE LOCATION)	
LATITUDE = 39°30'41.90" (39.511638)	LATITUDE = 39°30'35.01" (39.509725)	LATITUDE = 39°30'41.90" (39.511638)	LATITUDE = 39°30'35.01" (39.509725)
LONGITUDE = 108°12'26.93" (108.207481)		LONGITUDE = 108°12'44.99" (108.212498)	

PDOP = 1.4

BERRY PETROLEUM COMPANY

Well location, OXY 22-19D, located as shown in the SW 1/4 NW 1/4 of Section 22, T6S, R97W, 6th P.M., Garfield County, Colorado.

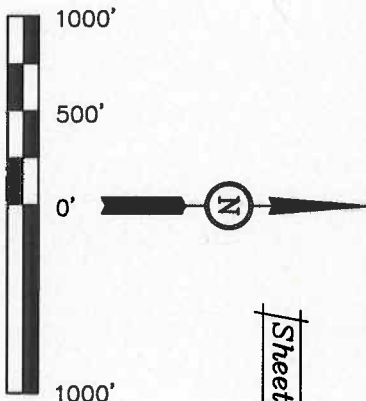
BASIS OF ELEVATION

SPOT ELEVATION AT THE NORTHWEST CORNER OF SECTION 30, T5S, R95W, 6th P.M. TAKEN FROM THE FORKED GULCH QUADRANGLE, COLORADO, GARFIELD COUNTY, 7.5 MINUTE SERIES (TOPOGRAPHICAL MAP) PUBLISHED BY THE UNITED STATES DEPARTMENT OF THE INTERIOR, GEOLOGICAL SURVEY. SAID ELEVATION IS MARKED AS BEING 5966 FEET.

BASIS OF BEARINGS

BASIS OF BEARINGS IS A G.P.S. OBSERVATION.

Sheet 1c of 12



CERTIFICATE

THIS IS TO CERTIFY THAT THE ABOVE PLAT WAS PREPARED AND LOCATION AS SHOWN WAS STAKED ON THE GROUND FROM FIELD NOTES OF ACTUAL SURVEYS MADE BY ME OR UNDER MY SUPERVISION AND THAT THE SAME ARE TRUE AND CORRECT TO THE BEST OF MY KNOWLEDGE AND BELIEF.

REGISTERED LAND SURVEYOR
REGISTRATION NO. 10000
STATE OF COLORADO

UTAH ENGINEERING & LAND SURVEYING

86 SOUTH 200 EAST - VERNAL, UTAH 84078

(435) 789-1017

SCALE

1" = 1000'

DATE SURVEYED: 08-10-09 DATE DRAWN: 09-03-09

PARTY

B.J. B.B. C.H.

REFERENCES

G.L.O. PLAT

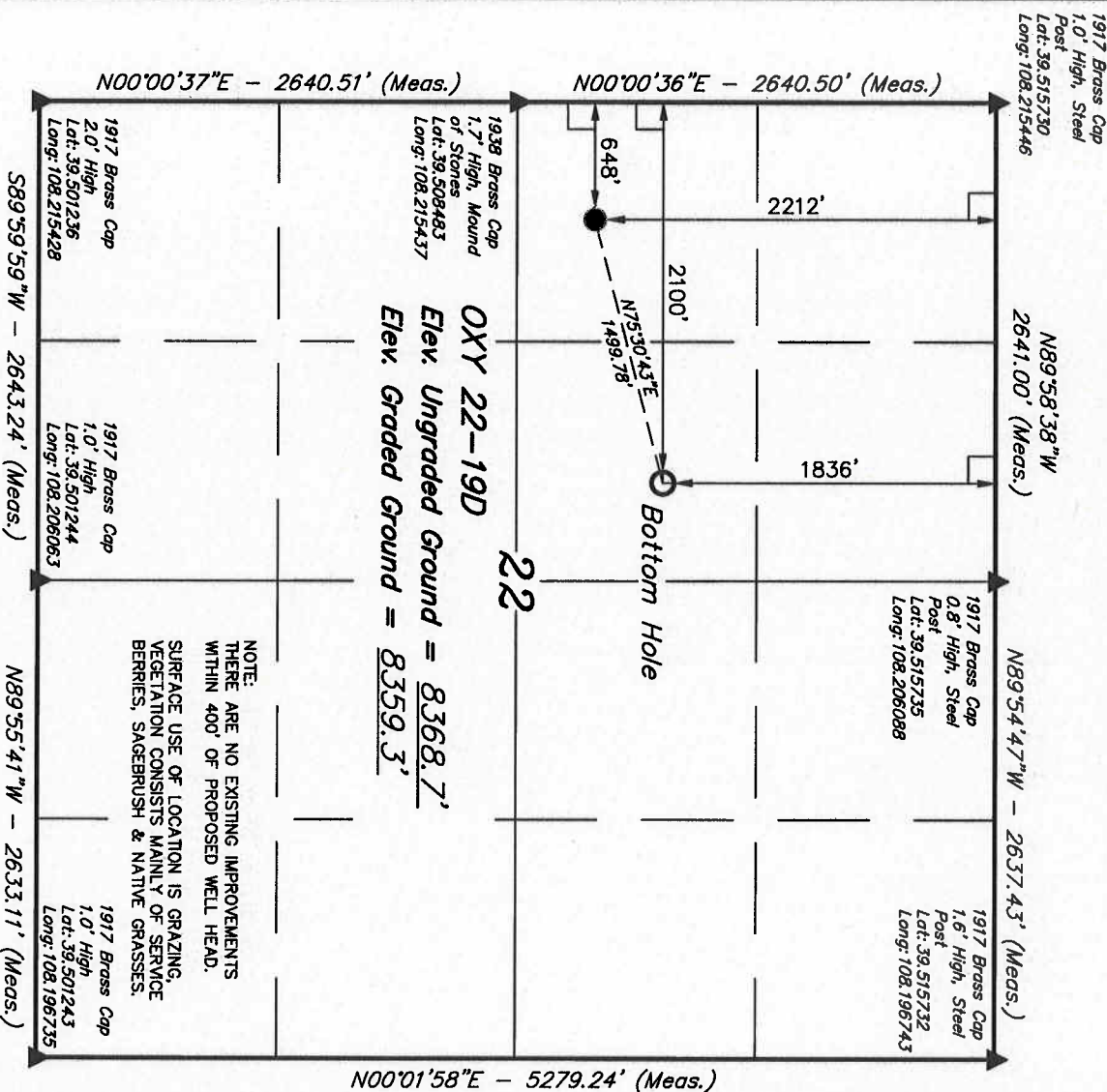
WEATHER

WARM

FILE

BERRY PETROLEUM COMPANY

T6S, R97W, 6th P.M.



LEGEND:

— = 90° SYMBOL

● = PROPOSED WELL HEAD.

▲ = SECTION CORNERS LOCATED.

NAD 83 (TARGET BOTTOM HOLE)		NAD 83 (SURFACE LOCATION)	
LATITUDE = 39°30'38.50" (39.510695)		LATITUDE = 39°30'34.78" (39.509661)	
LONGITUDE = 108°12'28.80" (108.207999)		LONGITUDE = 108°12'47.31" (108.213142)	
NAD 27 (TARGET BOTTOM HOLE)		NAD 27 (SURFACE LOCATION)	
LATITUDE = 39°30'38.58" (39.510718)		LATITUDE = 39°30'34.86" (39.509683)	
LONGITUDE = 108°12'28.50" (108.207361)		LONGITUDE = 108°12'45.02" (108.212504)	

PDOP = 1.7

BERRY PETROLEUM COMPANY

Well location, OXY 22-18D, located as shown in the SW 1/4 NW 1/4 of Section 22, T6S, R97W, 6th P.M., Garfield County, Colorado.

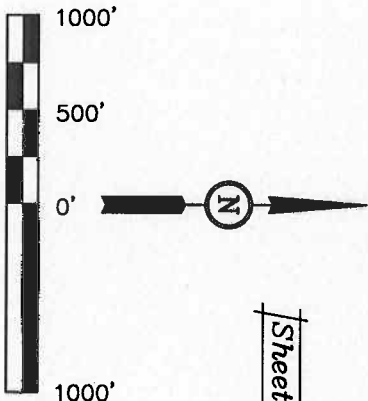
BASIS OF ELEVATION

SPOT ELEVATION AT THE NORTHWEST CORNER OF SECTION 30, T5S, R95W, 6th P.M. TAKEN FROM THE FORKED GULCH QUADRANGLE, COLORADO, GARFIELD COUNTY, 7.5 MINUTE SERIES (TOPOGRAPHICAL MAP) PUBLISHED BY THE UNITED STATES DEPARTMENT OF THE INTERIOR, GEOLOGICAL SURVEY. SAID ELEVATION IS MARKED AS BEING 5966 FEET.

BASIS OF BEARINGS

BASIS OF BEARINGS IS A G.P.S. OBSERVATION.

Sheet 1b of 12



SCALE

CERTIFICATE

THIS IS TO CERTIFY THAT THE ABOVE PREPARED AND LOCATED AS SHOWN WAS STAKED ON THE GROUND BY THE FIELD NOTES OF ACTUAL SURVEYS MADE BY ME UNDER MY SUPERVISION AND THAT THE SAME ARE TRUE AND CORRECT TO THE BEST OF MY KNOWLEDGE AND BELIEF.

REGISTERED LAND SURVEYOR
REGISTRATION NO. 1017
STATE OF COLORADO

UTAH ENGINEERING & LAND SURVEYING

86 SOUTH 200 EAST - VERNAL, UTAH 84078

(435) 789-1017

SCALE

1" = 1000'

DATE SURVEYED:

08-10-09

DATE DRAWN:

09-03-09

PARTY

B.J.

B.B.

C.H.

REFERENCES

G.L.O. PLAT

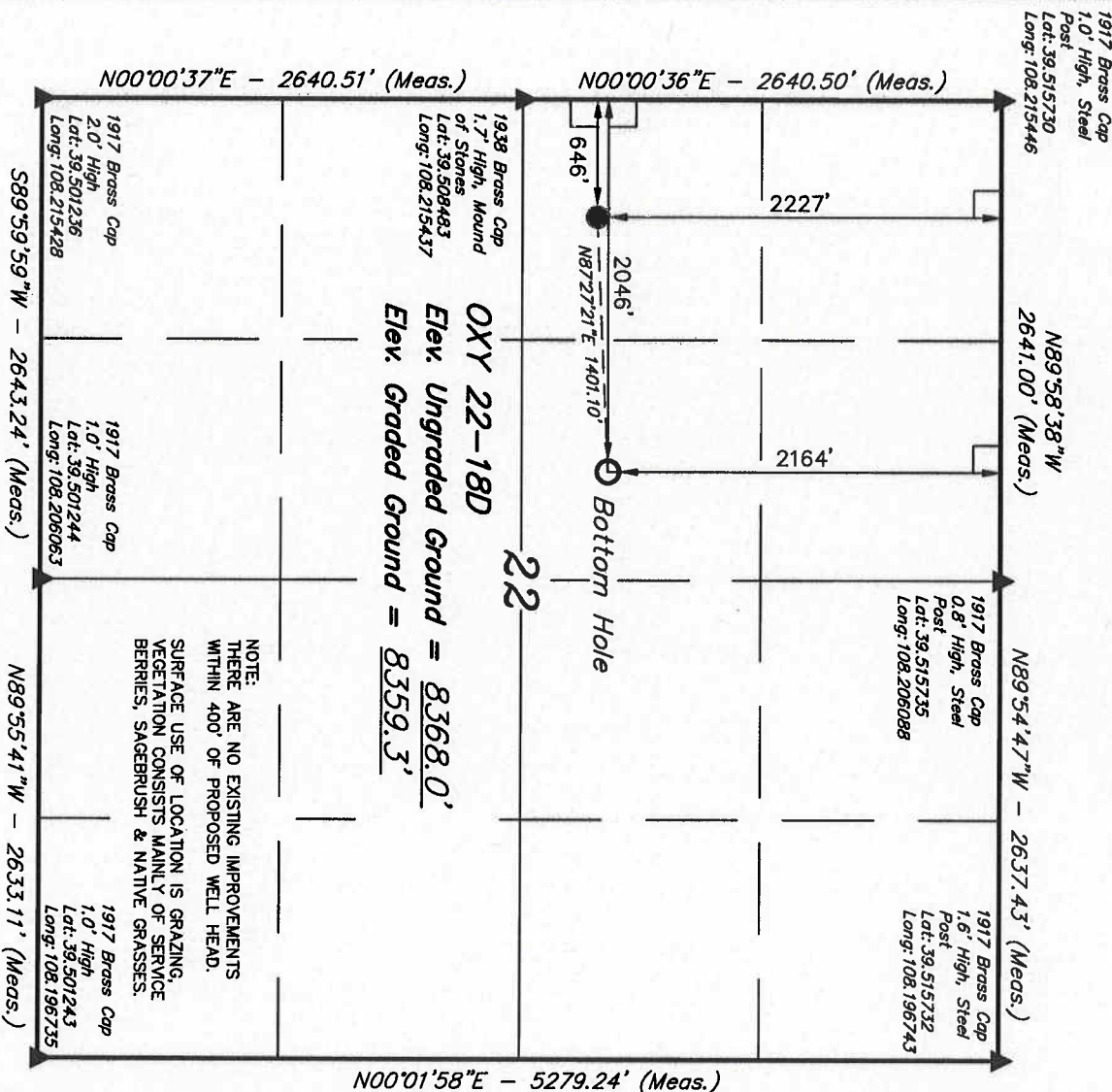
WEATHER

WARM

FILE

BERRY PETROLEUM COMPANY

T6S, R97W, 6th P.M.



LEGEND:

— = 90° SYMBOL

● = PROPOSED WELL HEAD.

▲ = SECTION CORNERS LOCATED.

NAD 83 (TARGET BOTTOM HOLE)	NAD 83 (SURFACE LOCATION)
LATITUDE = 39°30'35.26" (39.509795)	LATITUDE = 39°30'34.63" (39.509620)
LONGITUDE = 108°12'29.48" (108.208190)	LONGITUDE = 108°12'47.34" (108.213149)
NAD 27 (TARGET BOTTOM HOLE)	NAD 27 (SURFACE LOCATION)
LATITUDE = 39°30'35.34" (39.509818)	LATITUDE = 39°30'34.71" (39.509642)
LONGITUDE = 108°12'27.19" (108.207552)	LONGITUDE = 108°12'45.04" (108.212511)

PDOP = 1.7

BERRY PETROLEUM COMPANY

Well location, OXY 22-17D, located as shown in the SW 1/4 NW 1/4 of Section 22, T6S, R97W, 6th P.M., Garfield County, Colorado.

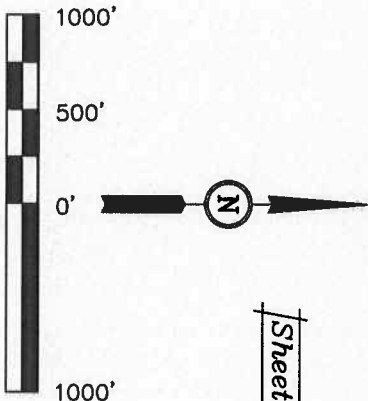
BASIS OF ELEVATION

SPOT ELEVATION AT THE NORTHWEST CORNER OF SECTION 30, T5S, R95W, 6th P.M. TAKEN FROM THE FORKED GULCH QUADRANGLE, COLORADO, GARFIELD COUNTY, 7.5 MINUTE SERIES (TOPOGRAPHICAL MAP) PUBLISHED BY THE UNITED STATES DEPARTMENT OF THE INTERIOR, GEOLOGICAL SURVEY. SAID ELEVATION IS MARKED AS BEING 5966 FEET.

BASIS OF BEARINGS

BASIS OF BEARINGS IS A G.P.S. OBSERVATION.

Sheet 1a of 12



SCALE

CERTIFICATE

THIS IS TO CERTIFY THAT THE ABOVE PLAT WAS PREPARED AND LOCATION AS SHOWN WAS STAKED ON THE GROUND FROM FIELD NOTES OF ACTUAL SURVEYS MADE BY ME OR UNDER MY CLOSE SUPERVISION AND THAT THE SAME ARE TRUE AND CORRECT TO THE BEST OF MY KNOWLEDGE AND BELIEF.

REGISTERED LAND SURVEYOR
REGISTRATION NO. 14923
STATE OF COLORADO

UTAH ENGINEERING & LAND SURVEYING

86 SOUTH 200 EAST - VERNAL, UTAH 84078
(435) 789-1017

SCALE

1" = 1000'

DATE SURVEYED:

08-10-09

DATE DRAWN:

09-03-09

PARTY

B.J.

B.B.

C.H.

REFERENCES

G.L.O. PLAT

WEATHER

WARM

FILE

BERRY PETROLEUM COMPANY

T6S, R97W, 6th P.M.

1917 Brass Cap
1.0' High, Steel
Post: 39.515730
Lat: 108.215446
Long: 108.215446

N89°58'38"W
2641.00' (Meas.)

N89°54'47"W - 2637.43' (Meas.)

1917 Brass Cap
0.8' High, Steel
Post: 39.515735
Lat: 108.206088
Long: 108.206088

1917 Brass Cap
1.6' High, Steel
Post: 39.515732
Lat: 108.196743
Long: 108.196743

N00°00'36"E - 2640.50' (Meas.)

N00°00'37"E - 2640.51' (Meas.)

OXY 22-17D

Elev. Ungraded Ground = 8368.1'
Elev. Graded Ground = 8359.3'

Bottom Hole

22

1938 Brass Cap
1.7' High, Mound
of Stones
Lat: 39.508483
Long: 108.215437

1917 Brass Cap
2.0' High
Lat: 39.501236
Long: 108.215428

1917 Brass Cap
1.0' High
Lat: 39.501244
Long: 108.206063

1917 Brass Cap
1.0' High
Lat: 39.501243
Long: 108.196735

S89°59'59"W - 2643.24' (Meas.)

N89°55'41"W - 2633.11' (Meas.)

NOTE:
THERE ARE NO EXISTING IMPROVEMENTS
WITHIN 400' OF PROPOSED WELL HEAD.
SURFACE USE OF LOCATION IS GRAZING,
VEGETATION CONSISTS MAINLY OF SERVICE
BERRIES, SAGEBRUSH & NATIVE GRASSES.

LEGEND:

— = 90° SYMBOL

● = PROPOSED WELL HEAD.

▲ = SECTION CORNERS LOCATED.

NAD 83 (TARGET BOTTOM HOLE)

LATITUDE = 39°30'32.13" (39.508925)
LONGITUDE = 108°12'29.87" (108.208298)

NAD 27 (TARGET BOTTOM HOLE)

LATITUDE = 39°30'32.21" (39.508947)
LONGITUDE = 108°12'27.58" (108.207661)

NAD 83 (SURFACE LOCATION)

LATITUDE = 39°30'34.49" (39.509579)
LONGITUDE = 108°12'47.36" (108.213155)

NAD 27 (SURFACE LOCATION)

LATITUDE = 39°30'34.57" (39.509602)
LONGITUDE = 108°12'45.06" (108.212517)

PDOP = 2.0

T6S, R97W, 6th P.M.

BERRY PETROLEUM COMPANY

Well location, OXY 22-32D, located as shown in the SW 1/4 NW 1/4 of Section 22, T6S, R97W, 6th P.M., Garfield County, Colorado.

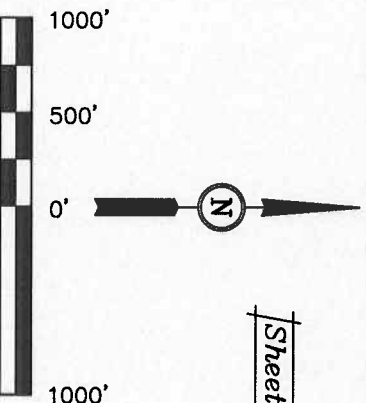
BASIS OF ELEVATION

SPOT ELEVATION AT THE NORTHWEST CORNER OF SECTION 30, T5S, R95W, 6th P.M. TAKEN FROM THE FORKED GULCH QUADRANGLE, COLORADO, GARFIELD COUNTY, 7.5 MINUTE SERIES (TOPOGRAPHICAL MAP) PUBLISHED BY THE UNITED STATES DEPARTMENT OF THE INTERIOR, GEOLOGICAL SURVEY. SAID ELEVATION IS MARKED AS BEING 5966 FEET.

BASIS OF BEARINGS

BASIS OF BEARINGS IS A G.P.S. OBSERVATION.

Sheet 1p of 12



SCALE

CERTIFICATE

THIS IS TO CERTIFY THAT THE ABOVE PLAT WAS PREPARED AND LOCATION AS SHOWN WAS STAKED ON THE GROUND BY THE FIELD NOTES OF ACTUAL SURVEYS MADE BY ME OR UNDER MY SUPERVISION AND THAT THE SAME ARE TRUE AND CORRECT TO THE BEST OF MY KNOWLEDGE AND BELIEF.

REGISTERED LAND SURVEYOR
REGISTRATION NO. 11990
STATE OF COLORADO

UTAH ENGINEERING & LAND SURVEYING

85 SOUTH 200 EAST - VERNAL, UTAH 84078

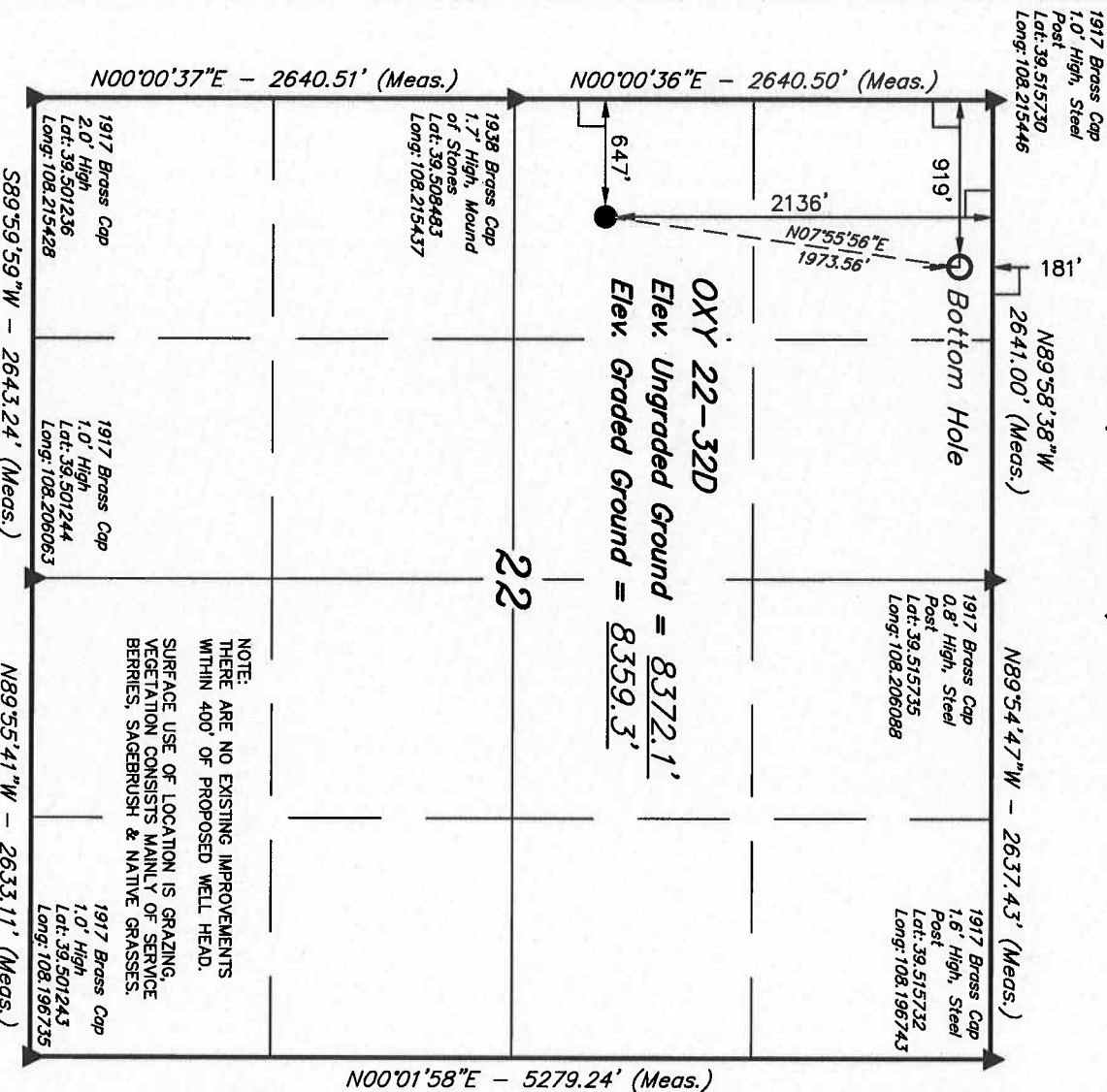
(435) 789-1017

SCALE 1" = 1000'

PARTY	DATE SURVEYED:	DATE DRAWN:
B.J. B.B. C.H.	08-10-09	09-03-09
WEATHER	REFERENCES	FILE
WARM	G.L.O. PLAT	BERRY PETROLEUM COMPANY

LEGEND:

- = 90° SYMBOL
- = PROPOSED WELL HEAD.
- ▲ = SECTION CORNERS LOCATED.



NOTE:
THERE ARE NO EXISTING IMPROVEMENTS WITHIN 400' OF PROPOSED WELL HEAD.
SURFACE USE OF LOCATION IS GRAZING, VEGETATION CONSISTS MAINLY OF SERVICE BERRIES, SAGEBRUSH & NATIVE GRASSES.

PDOP = 2.0

NAD 83 (TARGET BOTTOM HOLE)	NAD 83 (SURFACE LOCATION)
LATITUDE = 39°30'54.84" (39.515234)	LATITUDE = 39°30'35.53" (39.509869)
LONGITUDE = 108°12'43.88" (108.212188)	LONGITUDE = 108°12'47.32" (108.213145)
NAD 27 (TARGET BOTTOM HOLE)	NAD 27 (SURFACE LOCATION)
LATITUDE = 39°30'54.92" (39.515257)	LATITUDE = 39°30'35.61" (39.509891)
LONGITUDE = 108°12'41.58" (108.211550)	LONGITUDE = 108°12'45.03" (108.212507)

BERRY PETROLEUM COMPANY

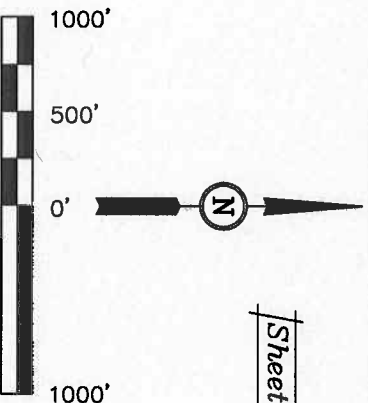
1917 Brass Cap
1.0' High, Steel
Post
Lot: 39.515730
Long: 108.215446

N89°54'47"W - 2637.43' (Meas.)

BASIS OF ELEVATION

BASIS OF BEARINGS

BASIS OF BEARINGS IS A G.P.S. OBSERVATION.



Sheet 10 of 12

THIS IS TO CERTIFY THAT THE ABOVE PLANT WAS PREPARED AND
LOCATION AS SHOWN WAS STAGED ON THE GROUND. THIS FIELD
NOTES OF ACTUAL SUREYS MADE BY ME OF UNDER MY
SUPERVISION AND THAT THE SAME ARE TRUE AND CORRECT TO
THE BEST OF MY KNOWLEDGE AND BELIEF.

REGISTERED LAND SURVEYOR
REGISTRATION NO. 17492
STATE OF COLORADO

85 SOUTH 200 EAST - VERNAL, UTAH 84078

(435) 789-1017

SCALE 1" = 1000'	DATE SURVEYED: 08-10-09	DATE DRAWN: 09-03-09
---------------------	----------------------------	-------------------------

PARTY	REFERENCES
B.J.	G.L.O. PLAT
B.B.	
C.H.	

WEATHER

WARM:

MAD 83 (TARGET BOTTOM HOLE)		MAD 83 (SURFACE LOCATION)	
LATITUDE = 39.3015,61°	(39.514336)	LATITUDE = 39.3035,38°	(39.503828)
LONGITUDE = 108.1246,34°	(108.212872)	LONGITUDE = 108.1247,35°	(108.213152)
MAD 27 (TARGET BOTTOM HOLE)		MAD 27 (SURFACE LOCATION)	
LATITUDE = 39.3015,61°	(39.514336)	LATITUDE = 39.3035,46°	(39.503850)
LONGITUDE = 108.1244,04°	(108.212234)	LONGITUDE = 108.1245,05°	(108.212951)

LEGEND:

\perp = 90° SYMBOL

● = PROPOSED WELL HEAD.

▲ = SECTION CORNERS LOCATED.

T6S, R97W, 6th P.M.

1917 Brass Cap
1.0' High, Steel
Post
Lat: 39.515730
Long: 108.215446

N89°58'38"W
2641.00' (Meas.)

N89°54'47"W - 2637.43' (Meas.)

1917 Brass Cap
0.8' High, Steel
Post
Lat: 39.515735
Long: 108.206088

1917 Brass Cap
1.6' High, Steel
Post
Lat: 39.515732
Long: 108.196743

Bottom Hole

N00°00'36"E - 2640.50' (Meas.)

646'
2166'
85'

OXY 22-30D
Elev. Ungraded Ground = 8371.0'
Elev. Graded Ground = 8359.3'

1938 Brass Cap
1.7' High, Mound
of Stones
Lat: 39.508483
Long: 108.215437

1917 Brass Cap
2.0' High
Lat: 39.501236
Long: 108.215428

S89°59'59"W - 2643.24' (Meas.)

N89°55'41"W - 2633.11' (Meas.)

LINE TABLE		
LINE	DIRECTION	LENGTH
L1	N00°06'01"E	1308.15'

NOTE:
THERE ARE NO EXISTING IMPROVEMENTS
WITHIN 400' OF PROPOSED WELL HEAD.
SURFACE USE OF LOCATION IS GRAZING,
VEGETATION CONSISTS MAINLY OF SERVICE
BERRIES, SAGEBRUSH & NATIVE GRASSES.

N00°01'58"E - 5279.24' (Meas.)

LEGEND:

- = 90° SYMBOL
- = PROPOSED WELL HEAD.
- ▲ = SECTION CORNERS LOCATED.

NAD 83 (TARGET BOTTOM HOLE)		NAD 83 (SURFACE LOCATION)	
LATITUDE = 39°30'48.16" (39.513377)		LATITUDE = 39°30'35.23" (39.509787)	
LONGITUDE = 108°12'47.36" (108.213155)		LONGITUDE = 108°12'47.37" (108.213156)	
NAD 27 (TARGET BOTTOM HOLE)		NAD 27 (SURFACE LOCATION)	
LATITUDE = 39°30'48.24" (39.513400)		LATITUDE = 39°30'35.31" (39.509809)	
LONGITUDE = 108°12'45.06" (108.212518)		LONGITUDE = 108°12'45.07" (108.212520)	

PDOP = 1.4

BERRY PETROLEUM COMPANY

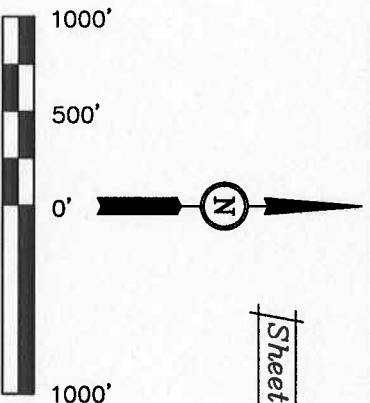
Well location, OXY 22-30D, located as shown
in the SW 1/4 NW 1/4 of Section 22, T6S,
R97W, 6th P.M., Garfield County, Colorado.

BASIS OF ELEVATION

SPOT ELEVATION AT THE NORTHWEST CORNER OF SECTION
30, T5S, R95W, 6th P.M. TAKEN FROM THE FORKED GULCH
QUADRANGLE, COLORADO, GARFIELD COUNTY, 7.5 MINUTE
SERIES (TOPOGRAPHICAL MAP) PUBLISHED BY THE UNITED
STATES DEPARTMENT OF THE INTERIOR, GEOLOGICAL SURVEY.
SAID ELEVATION IS MARKED AS BEING 5966 FEET.

BASIS OF BEARINGS

BASIS OF BEARINGS IS A G.P.S. OBSERVATION.



Sheet 1n of 12

CERTIFICATE

THIS IS TO CERTIFY THAT THE ABOVE PLAT WAS PREPARED AND
LOCATION AS SHOWN WAS STAKED ON THE GROUND FROM FIELD
NOTES OF ACTUAL SURVEYS MADE BY ME OR UNDER MY
SUPERVISION AND THAT THE SAME ARE TRUE AND CORRECT
TO THE BEST OF MY KNOWLEDGE AND BELIEF.

REGISTERED LAND SURVEYOR
REGISTRATION NO. 17492
STATE OF COLORADO

UNTAN ENGINEERING & LAND SURVEYING

85 SOUTH 200 EAST - VERNAL, UTAH 84078
(435) 789-1017

SCALE		DATE SURVEYED:	DATE DRAWN:
1" = 1000'		08-10-09	09-03-09
PARTY	REFERENCES		
B.J. B.B. C.H.	G.L.O. PLAT		
WEATHER	FILE		
WARM	BERRY PETROLEUM COMPANY		

T6S, R97W, 6th P.M.

1917 Brass Cap
1.0' High, Steel
Post
Lat: 39.515730
Long: 108.215446

N89°58'38"W
2641.00' (Meas.)

N89°54'47"W - 2637.43' (Meas.)

1917 Brass Cap
0.8' High, Steel
Post
Lat: 39.515735
Long: 108.206088

1917 Brass Cap
1.6' High, Steel
Post
Lat: 39.515732
Long: 108.196743

N00°00'36"E - 2640.50' (Meas.)

N00°00'37"E - 2640.51' (Meas.)

OXY 22-29D
Elev. Ungraded Ground = 8370.7'
Elev. Graded Ground = 8359.3'

Bottom Hole

22

LINE TABLE			
LINE	DIRECTION	LENGTH	
L1	N02°52'55"W	1005.16'	

NOTE:
THERE ARE NO EXISTING IMPROVEMENTS
WITHIN 400' OF PROPOSED WELL HEAD.

SURFACE USE OF LOCATION IS GRAZING.
VEGETATION CONSISTS MAINLY OF SERVICE
BERRIES, SAGEBRUSH & NATIVE GRASSES.

1917 Brass Cap
2.0' High
Lat: 39.501236
Long: 108.215428

1917 Brass Cap
1.0' High
Lat: 39.501244
Long: 108.206083

N89°55'41"W - 2633.11' (Meas.)

N00°01'58"E - 5279.24' (Meas.)

LEGEND:

- = 90° SYMBOL
- = PROPOSED WELL HEAD.
- ▲ = SECTION CORNERS LOCATED.

NAD 83 (TARGET BOTTOM HOLE)		NAD 83 (SURFACE LOCATION)	
LATITUDE = 39°30'45.00" (39.512501)	LATITUDE = 39°30'35.09" (39.509746)	LATITUDE = 39°30'45.08" (39.512524)	LATITUDE = 39°30'35.17" (39.509768)
LONGITUDE = 108°12'48.05" (108.213348)	LONGITUDE = 108°12'47.39" (108.213164)	LONGITUDE = 108°12'45.76" (108.212710)	LONGITUDE = 108°12'45.10" (108.212527)

PDOP = 1.4

BERRY PETROLEUM COMPANY

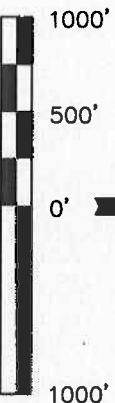
Well location, OXY 22-29D, located as shown in the SW 1/4 NW 1/4 of Section 22, T6S, R97W, 6th P.M., Garfield County, Colorado.

BASIS OF ELEVATION

SPOT ELEVATION AT THE NORTHWEST CORNER OF SECTION 30, T5S, R95W, 6th P.M. TAKEN FROM THE FORKED GULCH QUADRANGLE, COLORADO, GARFIELD COUNTY, 7.5 MINUTE SERIES (TOPOGRAPHICAL MAP) PUBLISHED BY THE UNITED STATES DEPARTMENT OF THE INTERIOR, GEOLOGICAL SURVEY. SAID ELEVATION IS MARKED AS BEING 5966 FEET.

BASIS OF BEARINGS

BASIS OF BEARINGS IS A G.P.S. OBSERVATION.



SCALE

CERTIFICATE

THIS IS TO CERTIFY THAT THE ABOVE PLAT WAS PREPARED AND LOCATION AS SHOWN WAS STAKED ON THE GROUND FROM FIELD NOTES OF ACTUAL SURVEYS MADE BY ME OR UNDER MY SUPERVISION AND THAT THE SAME ARE TRUE AND CORRECT TO THE BEST OF MY KNOWLEDGE AND BELIEF.

REGISTERED LAND SURVEYOR
REGISTRATION NO. 17492
STATE OF COLORADO

UNTAEH ENGINEERING & LAND SURVEYING

85 SOUTH 200 EAST - VERNAL, UTAH 84078

(435) 789-1017

SCALE 1" = 1000'		DATE SURVEYED:	DATE DRAWN:
PARTY		08-10-09	09-03-09
B.J.	B.B.		
	C.H.		
WEATHER		REFERENCES	
WARM		G.L.O. PLAT	
		FILE	
		BERRY PETROLEUM COMPANY	

Sheet 1m of 12

T6S, R97W, 6th P.M.

1917 Brass Cap
1.0' High, Steel
Post
Lat: 39.515730
Long: 108.215446

N89°58'38"W
2641.00' (Meas.)

N89°54'47"W - 2637.43' (Meas.)

1917 Brass Cap
0.8' High, Steel
Post
Lat: 39.515735
Long: 108.206088

1917 Brass Cap
1.6' High, Steel
Post
Lat: 39.515732
Long: 108.196743

N00°00'36"E - 2640.50' (Meas.)

562'
Bottom Hole
OXY 22-28D
Elev. Ungraded Ground = 8368.1'
Elev. Graded Ground = 8359.3'

1938 Brass Cap
1.7' High, Mound
of Stones
Lat: 39.508483
Long: 108.213437

1917 Brass Cap
2.0' High
Lat: 39.501236
Long: 108.215428

S89°59'39"W - 2643.24' (Meas.)

N89°55'41"W - 2633.11' (Meas.)

LINE TABLE		
LINE	BEARING	LENGTH
L1	N06°42'01"W	670.29'

NOTE:
THERE ARE NO EXISTING IMPROVEMENTS
WITHIN 400' OF PROPOSED WELL HEAD.
SURFACE USE OF LOCATION IS GRAZING.
VEGETATION CONSISTS MAINLY OF SERVICE
BERRIES, SAGEBRUSH & NATIVE GRASSES.

N00°01'58"E - 5279.24' (Meas.)

LEGEND:

- = 90° SYMBOL
- = PROPOSED WELL HEAD.
- ▲ = SECTION CORNERS LOCATED.

NAD 83 (TARGET BOTTOM HOLE)		NAD 83 (SURFACE LOCATION)	
LATITUDE = 39°30'41.52" (39.511532)	LATITUDE = 39°30'34.94" (39.509705)	LATITUDE = 39°30'34.94" (39.509705)	LATITUDE = 39°30'34.94" (39.509705)
LONGITUDE = 108°12'48.42" (108.213451)	LONGITUDE = 108°12'47.42" (108.213171)	LONGITUDE = 108°12'47.42" (108.213171)	LONGITUDE = 108°12'47.42" (108.213171)
NAD 27 (TARGET BOTTOM HOLE)		NAD 27 (SURFACE LOCATION)	
LATITUDE = 39°30'41.60" (39.511554)	LATITUDE = 39°30'35.02" (39.509728)	LATITUDE = 39°30'35.02" (39.509728)	LATITUDE = 39°30'35.02" (39.509728)
LONGITUDE = 108°12'46.13" (108.212813)	LONGITUDE = 108°12'45.12" (108.212533)	LONGITUDE = 108°12'45.12" (108.212533)	LONGITUDE = 108°12'45.12" (108.212533)

PDOP = 1.4

BERRY PETROLEUM COMPANY

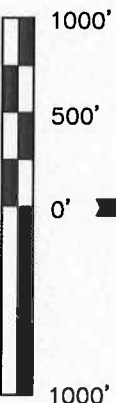
Well location, OXY 22-28D, located as shown in the SW 1/4 NW 1/4 of Section 22, T6S, R97W, 6th P.M., Garfield County, Colorado.

BASIS OF ELEVATION

SPOT ELEVATION AT THE NORTHWEST CORNER OF SECTION 30, T5S, R95W, 6th P.M. TAKEN FROM THE FORKED GULCH QUADRANGLE, COLORADO, GARFIELD COUNTY, 7.5 MINUTE SERIES (TOPOGRAPHICAL MAP) PUBLISHED BY THE UNITED STATES DEPARTMENT OF THE INTERIOR, GEOLOGICAL SURVEY. SAID ELEVATION IS MARKED AS BEING 5966 FEET.

BASIS OF BEARINGS

BASIS OF BEARINGS IS A G.P.S. OBSERVATION.



SCALE

CERTIFICATE

THIS IS TO CERTIFY THAT THE ABOVE PLAT WAS PREPARED AND LOCATION AS SHOWN WAS STAKED ON THE GROUND FROM THE FIELD NOTES OF ACTUAL SURVEYS MADE BY ME OR UNDER MY SUPERVISION AND THAT THE SAME ARE TRUE AND CORRECT TO THE BEST OF MY KNOWLEDGE AND BELIEF.

REVISED: 10-05-09

UNTAH ENGINEERING & LAND SURVEYING
85 SOUTH 200 EAST - VERNAL, UTAH 84078
(435) 789-1017

SCALE		DATE SURVEYED:	DATE DRAWN:
1" = 1000'		08-10-09	09-03-09
PARTY	REFERENCES		
B.J. B.B. C.H.	G.L.O. PLAT		
WEATHER	FILE		
WARM	BERRY PETROLEUM COMPANY		

Sheet 11 of 12

T6S, R97W, 6th P.M.

1917 Brass Cap
1.0' High, Steel
Post
Lat: 39.515730
Long: 108.215446

N89°58'38"W - 2641.00' (Meas.)

N89°54'47"W - 2637.43' (Meas.)

1917 Brass Cap
0.8' High, Steel
Post
Lat: 39.515735
Long: 108.206088

1917 Brass Cap
1.6' High, Steel
Post
Lat: 39.515732
Long: 108.196743

1856'

Bottom Hole

OXY 22-27D

Elev. Ungraded Ground = 8370.0'

Elev. Graded Ground = 8359.3'

553'

638'

1938 Brass Cap
1.7' High, Mound
of Stones
Lat: 39.508443
Long: 108.215437

1917 Brass Cap
2.0' High
Lat: 39.501236
Long: 108.215428

S89°59'59"W - 2643.24' (Meas.)

N89°55'41"W - 2633.11' (Meas.)

N00°01'58"E - 5279.24' (Meas.)

LINE TABLE		
LINE	DIRECTION	LENGTH
L1	N13°32'53"W	364.95'

NOTE:
THERE ARE NO EXISTING IMPROVEMENTS
WITHIN 400' OF PROPOSED WELL HEAD.

SURFACE USE OF LOCATION IS GRAZING.
VEGETATION CONSISTS MAINLY OF SERVICE
BERRIES, SAGEBRUSH & NATIVE GRASSES.

1917 Brass Cap
1.0' High
Lat: 39.501244
Long: 108.206083

1917 Brass Cap
1.0' High
Lat: 39.501243
Long: 108.196735

LEGEND:

- = 90° SYMBOL
- = PROPOSED WELL HEAD.
- ▲ = SECTION CORNERS LOCATED.

NAD 83 (TARGET BOTTOM HOLE)		NAD 83 (SURFACE LOCATION)	
LATITUDE = 39°30'38.30" (39.510636)		LATITUDE = 39°30'34.79" (39.509664)	
LONGITUDE = 108°12'48.54" (108.213482)		LONGITUDE = 108°12'47.44" (108.213178)	
NAD 27 (TARGET BOTTOM HOLE)		NAD 27 (SURFACE LOCATION)	
LATITUDE = 39°30'38.38" (39.510660)		LATITUDE = 39°30'34.87" (39.509667)	
LONGITUDE = 108°12'46.24" (108.212844)		LONGITUDE = 108°12'45.14" (108.212540)	

PDOP = 1.4

BERRY PETROLEUM COMPANY

Well location, OXY 22-27D, located as shown
in the SW 1/4 NW 1/4 of Section 22, T6S,
R97W, 6th P.M., Garfield County, Colorado.

BASIS OF ELEVATION

SPOT ELEVATION AT THE NORTHWEST CORNER OF SECTION
30, T5S, R9SW, 6th P.M. TAKEN FROM THE FORKED GULCH
QUADRANGLE, COLORADO, GARFIELD COUNTY, 7.5 MINUTE
SERIES (TOPOGRAPHICAL MAP) PUBLISHED BY THE UNITED
STATES DEPARTMENT OF THE INTERIOR, GEOLOGICAL SURVEY.
SAID ELEVATION IS MARKED AS BEING 5966 FEET.

BASIS OF BEARINGS

BASIS OF BEARINGS IS A G.P.S. OBSERVATION.



SCALE

CERTIFICATE

THIS IS TO CERTIFY THAT THE ABOVE PLAT WAS PREPARED AND
LOCATION AS SHOWN WAS STAKED ON THE GROUND FROM FIELD
NOTES OF ACTUAL SURVEYS MADE BY ME OR UNDER MY
SUPERVISION AND THAT THE SAME ARE TRUE AND CORRECT TO
THE BEST OF MY KNOWLEDGE AND BELIEF.

REGISTERED LAND SURVEYOR
REGISTRATION NO. 11482
STATE OF COLORADO

UNTAR ENGINEERING & LAND SURVEYING

85 SOUTH 200 EAST - VERNAL, UTAH 84078

(435) 789-1017

SCALE		DATE SURVEYED:	DATE DRAWN:
1" = 1000'		08-10-09	09-03-09
PARTY	REFERENCES		
B.J. B.B. C.H.	G.L.O. PLAT		
WEATHER	FILE		
WARM	BERRY PETROLEUM COMPANY		

Sheet 1k of 12

T6S, R97W, 6th P.M.

Well location, OXY 22-26D, located as shown in the SW 1/4 NW 1/4 of Section 22, T6S, R97W, 6th P.M., Garfield County, Colorado.

BERRY PETROLEUM COMPANY

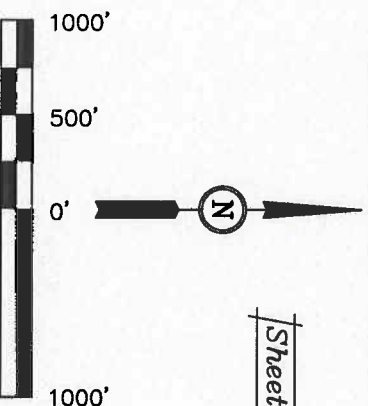
BASIS OF ELEVATION

SPOT ELEVATION AT THE NORTHWEST CORNER OF SECTION 30, T5S, R95W, 6th P.M. TAKEN FROM THE FORKED GULCH QUADRANGLE, COLORADO, GARFIELD COUNTY, 7.5 MINUTE SERIES (TOPOGRAPHICAL MAP) PUBLISHED BY THE UNITED STATES DEPARTMENT OF THE INTERIOR, GEOLOGICAL SURVEY. SAID ELEVATION IS MARKED AS BEING 5966 FEET.

BASIS OF BEARINGS

BASIS OF BEARINGS IS A G.P.S. OBSERVATION.

Sheet 1j of 12



SCALE

CERTIFICATE

THIS IS TO CERTIFY THAT THE ABOVE PLAT WAS PREPARED AND LOCATION AS SHOWN WAS STAKED ON THE GROUND BY THE FIELD NOTES OF ACTUAL SURVEYS MADE BY ME OR UNDER MY SUPERVISION AND THAT THE SAME ARE TRUE AND CORRECT TO THE BEST OF MY KNOWLEDGE AND BELIEF.

REGISTERED LAND SURVEYOR
REGISTRATION NO. 14990
STATE OF COLORADO

UNTAR ENGINEERING & LAND SURVEYING

85 SOUTH 200 EAST - VERNAL, UTAH 84078

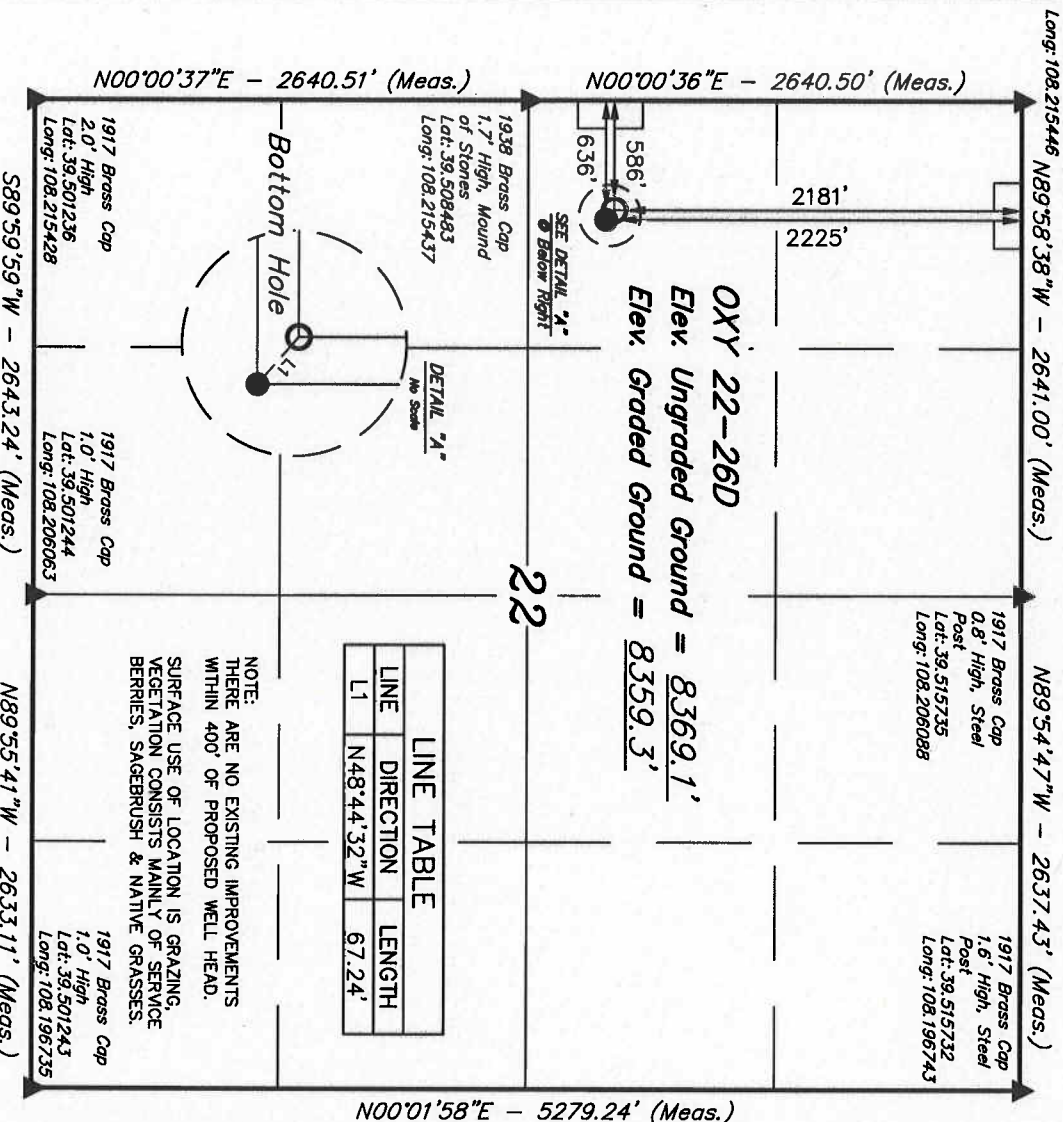
(435) 789-1017

SCALE 1" = 1000'
DATE SURVEYED: 08-10-09 DATE DRAWN: 09-03-09

PARTY B.J. B.B. C.H.
REFERENCES G.L.O. PLAT
FILE BERRY PETROLEUM COMPANY

LEGEND:

- = 90° SYMBOL
- = PROPOSED WELL HEAD.
- ▲ = SECTION CORNERS LOCATED.



N00°00'37"E - 2640.51' (Meas.)

N00°00'36"E - 2640.50' (Meas.)

N89°58'38"W - 2641.00' (Meas.)

N89°54'47"W - 2637.43' (Meas.)

N00°01'58"E - 5279.24' (Meas.)

S89°59'59"W - 2643.24' (Meas.)

N89°55'41"W - 2633.11' (Meas.)

T6S, R97W, 6th P.M.

Well location, OXY 22-25D, located as shown in the SW 1/4 NW 1/4 of Section 22, T6S, R97W, 6th P.M., Garfield County, Colorado.

BERRY PETROLEUM COMPANY

1917 Brass Cap
1.0' High, Steel
Post
Lat: 39.515730
Long: 108.215446

N89°58'38"W - 2641.00' (Meas.)

N89°54'47"W - 2637.43' (Meas.)

1917 Brass Cap
0.8' High, Steel
Post
Lat: 39.515735
Long: 108.206088

1917 Brass Cap
1.6' High, Steel
Post
Lat: 39.515732
Long: 108.196743

2240'
2477'

N00°00'36"E - 2640.50' (Meas.)

N00°00'37"E - 2640.51' (Meas.)

OXY 22-25D
Elev. Ungraded Ground = 8368.5'
Elev. Graded Ground = 8359.3'

Bottom Hole

1938 Brass Cap
1.7' High, Mound
of Stones
Lat: 39.508483
Long: 108.215437

1917 Brass Cap
2.0' High
Lat: 39.501236
Long: 108.215428

1917 Brass Cap
1.0' High
Lat: 39.501244
Long: 108.206063

1917 Brass Cap
1.0' High
Lat: 39.501243
Long: 108.196735

S89°59'59"W - 2643.24' (Meas.)

N89°55'41"W - 2633.11' (Meas.)

LINE TABLE		
LINE	DIRECTION	LENGTH
L1	S08°03'40"E	238.74'

NOTE:
THERE ARE NO EXISTING IMPROVEMENTS
WITHIN 400' OF PROPOSED WELL HEAD.
SURFACE USE OF LOCATION IS GRAZING,
VEGETATION CONSISTS MAINLY OF SERVICE
BERRIES, SAGEBRUSH & NATIVE GRASSES.

N00°01'58"E - 5279.24' (Meas.)

SPOT ELEVATION AT THE NORTHWEST CORNER OF SECTION 30, T6S, R95W, 6th P.M. TAKEN FROM THE FORKED GULCH QUADRANGLE, COLORADO, GARFIELD COUNTY, 7.5 MINUTE SERIES (TOPOGRAPHICAL MAP) PUBLISHED BY THE UNITED STATES DEPARTMENT OF THE INTERIOR, GEOLOGICAL SURVEY, SAID ELEVATION IS MARKED AS BEING 5966 FEET.

BASIS OF BEARINGS

BASIS OF BEARINGS IS A G.P.S. OBSERVATION.

BASIS OF ELEVATION

Sheet 11 of 12



SCALE

CERTIFICATE

THIS IS TO CERTIFY THAT THE ABOVE PLAT WAS PREPARED AND LOCATION AS SHOWN WAS STAKED ON THE GROUND FROM FIELD NOTES OF ACTUAL SURVEYS MADE BY ME OR UNDER MY SUPERVISION AND THAT THE SAME ARE TRUE AND CORRECT TO THE BEST OF MY KNOWLEDGE AND BELIEF.

REGISTERED LAND SURVEYOR
REGISTRATION NO. 10000
STATE OF COLORADO

UTAH ENGINEERING & LAND SURVEYING

86 SOUTH 200 EAST - VERNAL, UTAH 84078

(435) 789-1017

LEGEND:

- = 90° SYMBOL
- = PROPOSED WELL HEAD.
- ▲ = SECTION CORNERS LOCATED.

PDOP = 1.4

SCALE
1" = 1000'

DATE SURVEYED: 08-10-09 DATE DRAWN: 09-03-09

PARTY
B.J. B.B. C.H.
REFERENCES
G.L.O. PLAT

WEATHER
WARM
FILE
BERRY PETROLEUM COMPANY