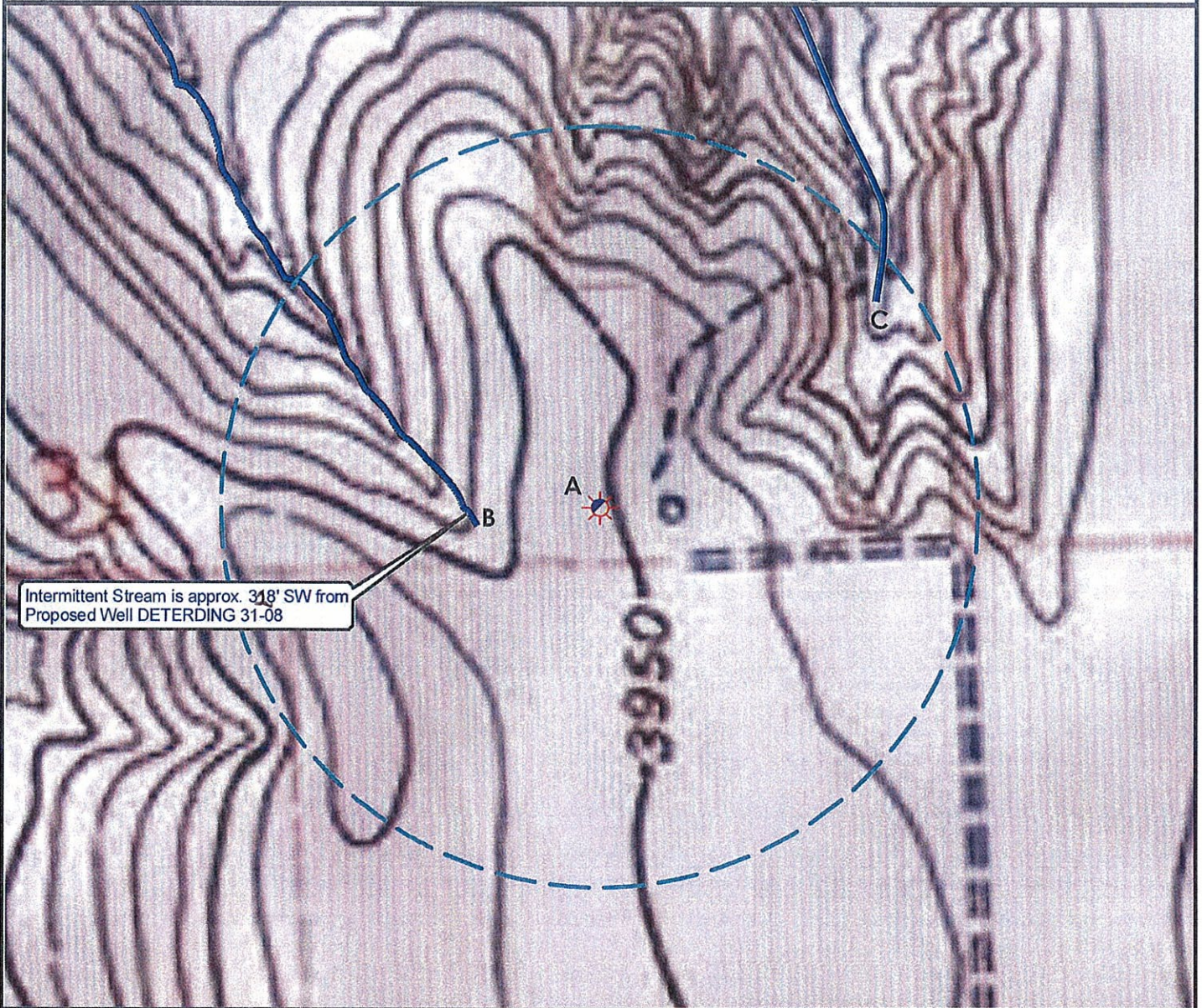


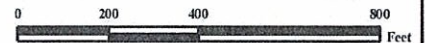
Hydrology Map



A. Proposed well DETERDING 31-08.

B. Intermittent stream is 318' SW.

C. Intermittent stream is 922' NE.



Legend

- | | | | |
|--|--------------------|--|----------------------|
| | Proposed Well | | Building/Residence |
| | Existing Well | | Oil & Gas Equipment |
| | Water Well | | Water Body |
| | Pedestal | | Utility Box |
| | CattleGuard/Gate | | Railroad |
| | Bridge | | Sewer |
| | ECD | | Fence |
| | 1000' Radius | | Overhead Power Line |
| | Facility Enclosure | | Pipeline |
| | | | Access Road |
| | | | Ditch/Canal |
| | | | Concrete Ditch/Canal |

1000ft Radius Map of Surface Water and Riparian Areas

DETERDING 31-08

Surface Location: T1N R44W S31

Field Date: 10/15/2009
 Drawing Date: 11/16/2009
 Drafter: CGR
 Checked By: MPS

Prepared for:
ROSETTA RESOURCES
 OPERATING LP
 717 Texas Avenue, Ste. 2800
 Houston, TX 77002



Use our resources to find yours!
www.petro-fs.com

1801 W. 13th Ave Denver, CO 80204 (303) 928-7128	111 E. Third Street Suite 207 Rifle, CO 81650 (970) 625-4740
--	---