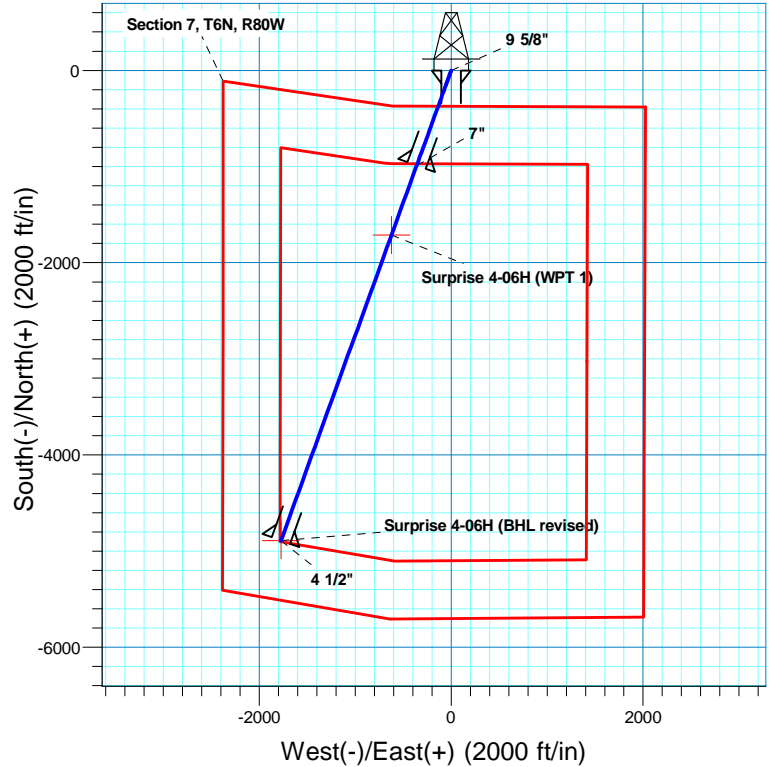
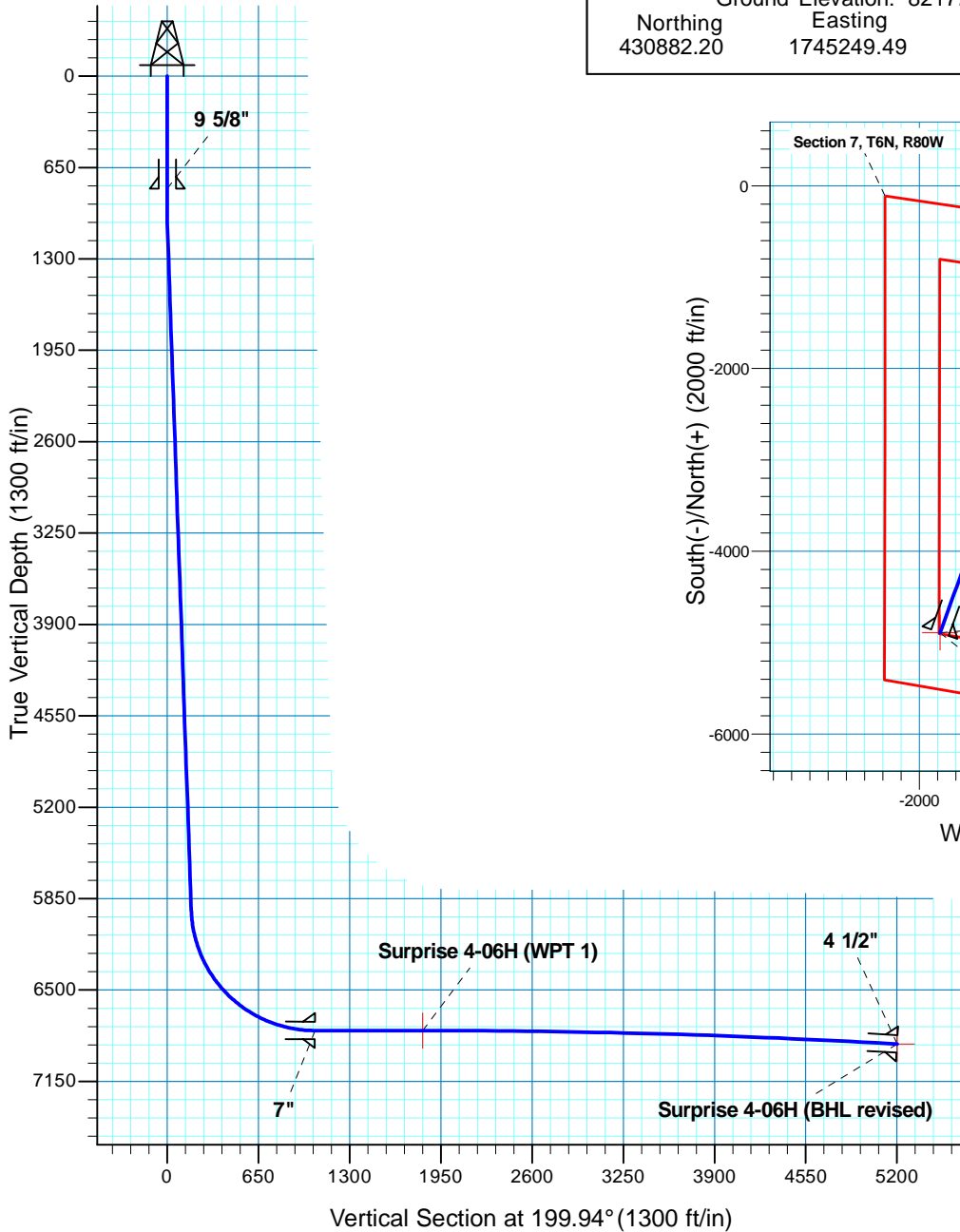


Surprise 4-06H

Section 6 T6N R80W
Jackson, County

Surface Location

NAD 1927 (NADCON CONUS) Colorado North 501
Ground Elevation: 8217.0 RIG @ 8238.0ft (True 32)
Northing 430882.20 Easting 1745249.49 Latitude 40° 30' 45.291 N Longitude 106° 24' 58.331 W



Azimuths to True North
Magnetic North: 9.88°
Magnetic Field
Strength: 53142.2snT
Dip Angle: 66.91°
Date: 1/25/2010
Model: IGRF200510

Project: Northpark
Site: Surprise
Well: 4-06H
Plan: APD

SECTION DETAILS

Sec	MD	Inc	Azi	TVD	+N/-S	+E/-W	DLeg	TFace	VSec	Target
1	0.0	0.00	0.00	0.0	0.0	0.0	0.00	0.00	0.0	
2	1000.0	0.00	0.00	1000.0	0.0	0.0	0.00	0.00	0.0	
3	1100.0	2.00	199.94	1100.0	-1.6	-0.6	2.00	199.94	1.7	
4	5940.3	2.00	199.94	5937.3	-160.4	-58.2	0.00	0.00	170.7	
5	7294.1	90.00	199.94	6788.0	-988.6	-358.6	6.50	0.00	1051.6	
6	8062.5	90.00	199.94	6788.0	-1710.9	-620.7	0.00	0.00	1820.0	Surprise 4-06H (WPT 1)
7	11446.0	86.75	199.93	6884.0	-4889.9	-1773.8	0.10	-179.91	5201.7	Surprise 4-06H (BHL revised)

TARGET DETAILS

Name	TVD	+N/-S	+E/-W	Northing	Easting	Latitude	Longitude	Shape
Surprise 4-06H (WPT 1)	6788.0	-1710.9	-620.7	429177.82	1744611.16	40° 30' 28.384 N	106° 25' 6.366 W	Point
Surprise 4-06H (BHL revised)	6884.0	-4889.9	-1773.8	426010.89	1743425.24	40° 29' 56.969 N	106° 25' 21.292 W	Point